

Resistive Linear Position Transducer

ELPT



- Output 4-20 mA or 0-20 mA or 0-10 V
- Internal electronic circuit
- Stable output signal against supply voltage variations
- Best solution for automation systems

Main Applications

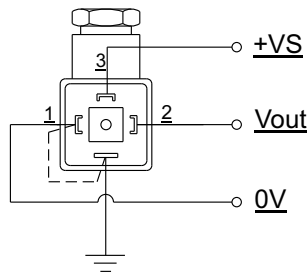
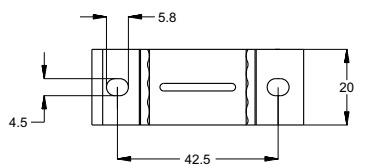
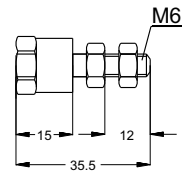
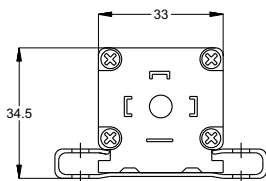
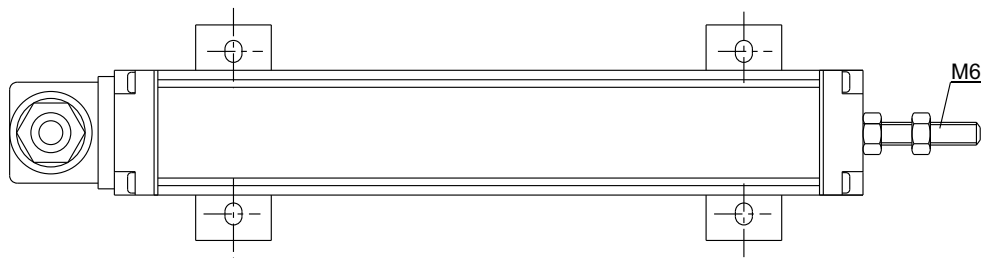
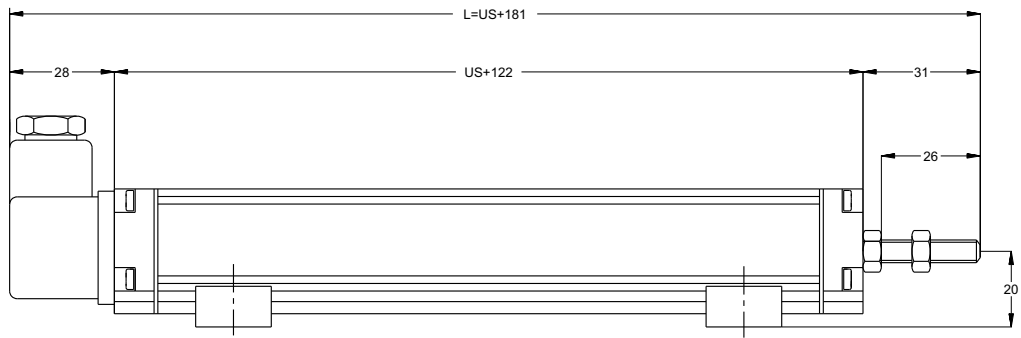
Plastic/ Metal Injection Moulding Machineries, Textile Machineries, Transfer/ Hydraulic Machineries, Marble/ Stone Machineries and General Automation Applications

Specifications

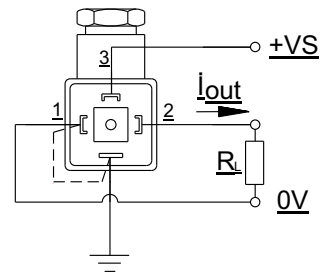
Mechanical stroke	30mm to 1250mm
Output	4-20 mA, 0-20 mA or 0-10 V
Linearity	± %0,05
Resolution	Infinite
Load resistance	Min. 10 Kohm
Repeatability	≤ %0.01
Mechanical life	100 * 10 ⁶ Cycles
Displacement speed	≤ 5 m/s
Permissible applied voltage	12-30 VDC
Electrical connections	4 Pole connector
Case dimensions	33mm x 33mm
Case material	Anodized aluminium
Rod diameter	6mm
Rod material	Stainless steel
IP Degree	IP 65
Working temperature	- 20 / + 80 °C
Mechanical fixing	Variable brackets

Dimensions

Model	LM	Mechanical stroke (MS)	Electrical measuring stroke (EMS)	Total lengt (L)
ELPT	30	32mm	30mm	173mm
ELPT	50	52mm	50mm	193mm
ELPT	75	77mm	75mm	218mm
ELPT	100	102mm	100mm	243mm
ELPT	125	127mm	125mm	268mm
ELPT	130	132mm	130mm	273mm
ELPT	150	152mm	150mm	293mm
ELPT	175	177mm	175mm	318mm
ELPT	200	202mm	200mm	343mm
ELPT	225	227mm	225mm	368mm
ELPT	250	252mm	250mm	393mm
ELPT	275	277mm	275mm	418mm
ELPT	300	302mm	300mm	443mm
ELPT	325	327mm	325mm	468mm
ELPT	350	352mm	350mm	493mm
ELPT	375	377mm	375mm	518mm
ELPT	400	402mm	400mm	543mm
ELPT	450	452mm	450mm	593mm
ELPT	500	502mm	500mm	643mm
ELPT	550	552mm	550mm	693mm
ELPT	600	602mm	600mm	743mm
ELPT	650	652mm	650mm	793mm
ELPT	700	702mm	700mm	843mm
ELPT	750	752mm	750mm	893mm
ELPT	800	802mm	800mm	943mm
ELPT	850	852mm	850mm	993mm
ELPT	900	902mm	900mm	1043mm
ELPT	1000	1002mm	1000mm	1143mm
ELPT	1250	1252mm	1250mm	1393mm



Voltage Output



Current Output

