

## Resistive Linear Position Transducer



- Output 4-20 mA or 0-20 mA or 0-10 V
- Internal electronic circuit
- Stable output signal against supply voltage variations
- Best solution for automation systems

### Main Applications

Metal Forming Machineries, Textile Machineries, Packing Machineries  
Marble/ Stone Machineries, Printing Machineries and General Automation Applications

### Specifications

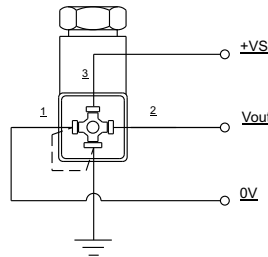
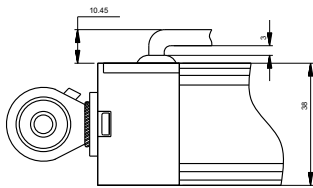
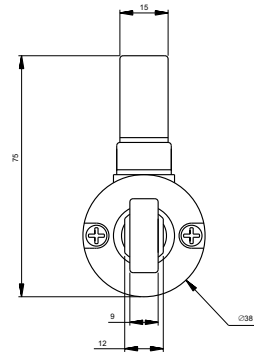
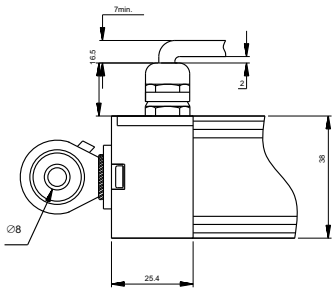
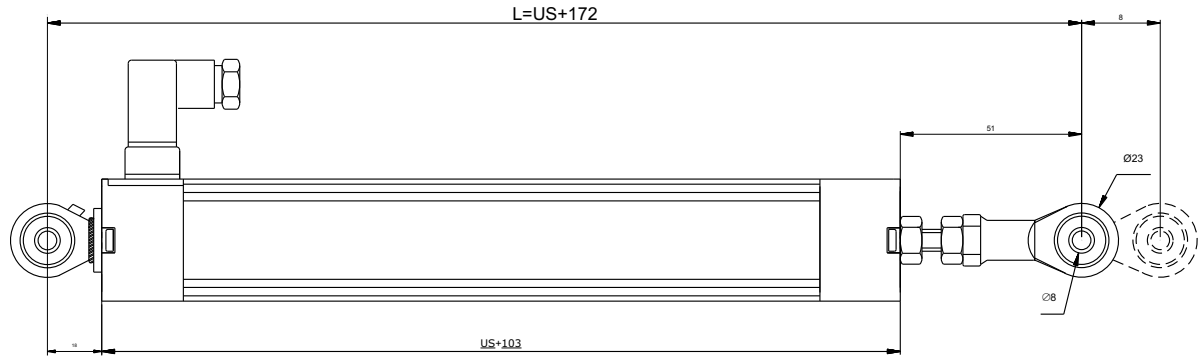
Measuring Stroke	50mm to 600mm
Output	4-20 mA or 0-20 mA or 0-10 V
Linearity	± %0,05
Resolution	Infinite
Load resistance	Min. 10 Kohm
Repeatability	≤ %0.01
Mechanical life	100 * 10 <sup>6</sup> Cycles
Displacement speed	≤ 5 m/s
Permissible applied voltage	13-30 VDC
Electrical connections	4 Pole connector
Case dimensions	Ø 38mm
Case material	Anodized aluminium
Rod diameter	10mm
Rod material	Stainless steel
IP Degree	IP 65
Working temperature	- 20 / + 80 °C
Mechanical fixing	2 Ball joints

### Dimensions

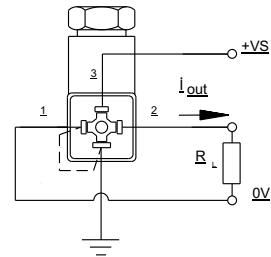
Model	LM	Mechanical stroke (MS)	Electrical measuring stroke (EMS)	Total length (L)
ELPC	50	52mm	50mm	272mm
ELPC	75	77mm	75mm	297mm
ELPC	100	102mm	100mm	322mm
ELPC	125	127mm	125mm	347mm
ELPC	130	132mm	130mm	352mm
ELPC	150	152mm	150mm	372mm
ELPC	175	177mm	175mm	397mm
ELPC	200	202mm	200mm	422mm
ELPC	225	227mm	225mm	447mm
ELPC	250	252mm	250mm	472mm
ELPC	275	277mm	275mm	497mm
ELPC	300	302mm	300mm	522mm
ELPC	325	327mm	325mm	547mm
ELPC	350	352mm	350mm	572mm
ELPC	375	377mm	375mm	597mm
ELPC	400	402mm	400mm	622mm
ELPC	450	452mm	450mm	672mm
ELPC	500	502mm	500mm	722mm
ELPC	550	552mm	550mm	772mm
ELPC	600	602mm	600mm	822mm

### Ordering Procedure

ELPC <i>Model</i>	200 <i>Measurement Stroke</i>	D <i>Linearity Class</i> D: 0,05 %	I4 <i>Output: Voltage or Current</i> V10: 0-10V I4: 4-20mA I20: 0-20mA



Voltage Output



Current Output