

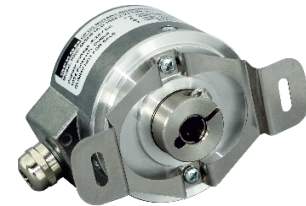
# PRI 58SH/H

## Optic Rotary Incremental Encoder (Semi hollow shaft / Hollow shaft)



### INCREMENTAL

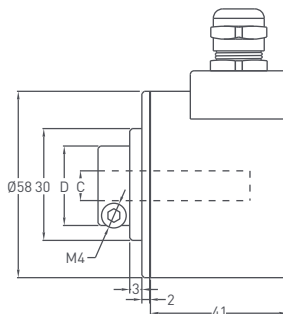
- 58 mm case dimensions
- Hollow shaft or semi hollow shaft case
- 100 - 150 - 200 - 360 - 400 - 500 - 600 - 720 - 1000 - 1024  
1800 - 2000 - 2048 - 2500 - 3600 - 4000 - 4096 - 5000 ppr.
- Push-Pull, TTL, Linedriver or HLD output
- Rod diameters 6 - 8 - 10 - 12 - 14 - 15 mm
- 3500 rpm max.



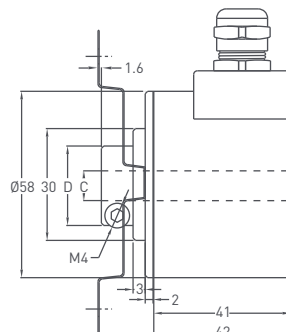
### Technical Specifications

Resolution	100 - 5000 ppr.
Output channels	A, B, Z or A, $\bar{A}$ , B, $\bar{B}$ , Z, $\bar{Z}$
Output type	TTL, Linedriver, Push-Pull, HLD
Power supply	5 VDC or 5-24 VDC or 8-24 VDC
Power consumption (without load)	<40 mA (24 VDC)
Cable	2,5 meter (standard) 5 wire + shield (Push-Pull) 2,5 meter (standard) 8 wire + shield (Linedriver)
Max. permissible shaft loading radial	100 N
axial	60 N
Displacement speed	3500 rpm
Rod diameter	Ø6 - 8 - 10 - 12 - 14 - 15 mm
Rod material	Stainless steel
Case dimensions	Ø58 mm
Case material	Aluminium and painted steel
Protection level	IP 54
Operating temperature	-20°C ... +80°C
Storage temperature	-30°C ... +90°C

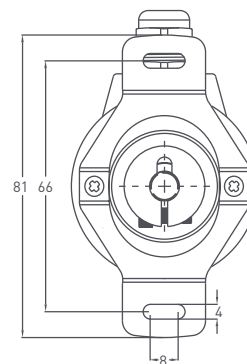
### Mechanical Specifications



SH Type (Radial)



H Type (Radial)



PRI 58SH / H	SH / H (semi hollow) / (hollow)	
	C	D
	Ø6mm	20mm
	Ø8mm	22mm
	Ø10mm	23,5mm
	Ø12mm	23,5mm
	Ø14mm	29,5mm
	Ø15mm	29,5mm

#### Push-Pull Cable Output

+V : Brown  
0V : White  
GND : Shield  
Ch A : Yellow  
Ch B : Green  
Ch Z : Gray

#### TTL - HLD - Linedriver Cable Output

+V : Brown  
0V : White  
GND : Shield  
Ch A : Yellow  
Ch B : Green  
Ch Z : Gray  
Ch A inv: Blue  
Ch B inv: Red  
Ch Z inv: Pink

### Ordering Procedure

Model	Case dimensions	Case type	Shaft diameter	Output type	Resolution	Output signal	Power supply	Connector / Cable	Cable output
PRI	58	SH	8	HLD	1024	Z	V2	2M5	R
PRI	58: 58 mm	SH : Semi hollow H : Hollow	6 : 6mm 8 : 8mm 10 : 10mm 12 : 12mm 14 : 14mm 15 : 15mm	LTD : Push-Pull LD : Linedriver HLD : High Linedriver TT : TTL	100 - 5000 ppr.	Z : A, B, Z B : A, B ZZ : A $\bar{A}$ , B $\bar{B}$ , Z $\bar{Z}$	V1 : 5 VDC V2 : 8 - 24 VDC V3 : 5 - 24 VDC	2M5 : 2,5 meter cable 5M : 5 meter cable 8M : 8 meter cable 10M : 10 meter cable C12 : 12 pin connector	R : Radial