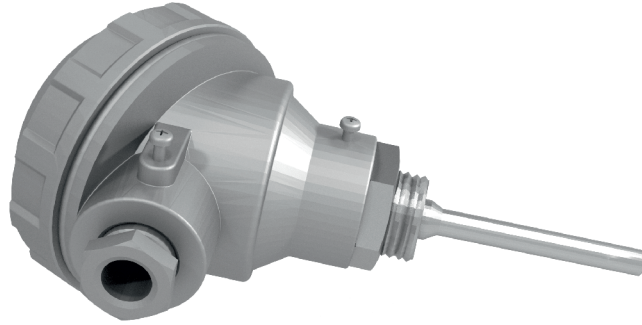
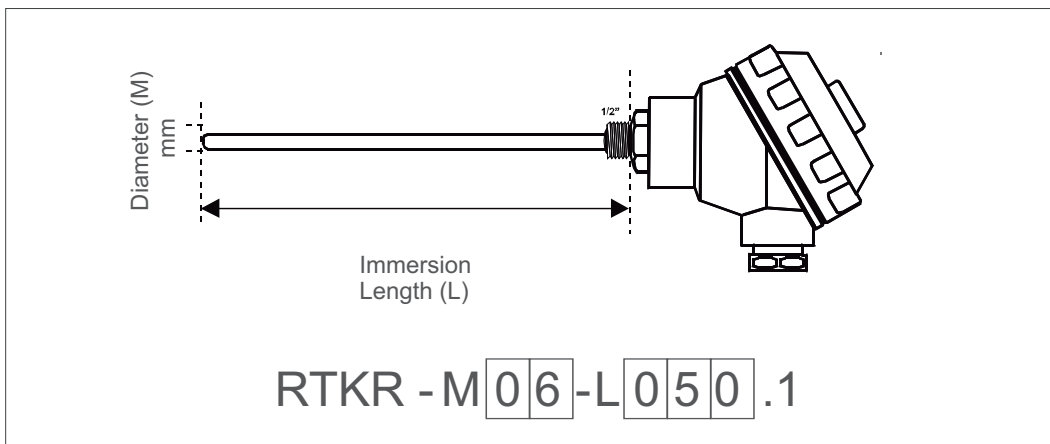


► (RTKR) Terminal Block with Fittingnut
RTKR-M06-L050.1

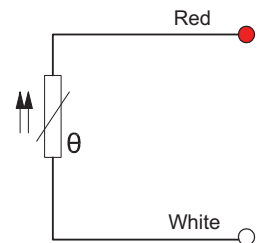


Max. operating temperature : -50 °C / +500 °C
Sensor type : DIN/EN60751 Class "A" 1xPT-100
Protection tube material : AISI304 (DIN1.4301) Stainless Steel
Fittingnut : Standard 1/2"

► Technical drawing



PT-100 Connections



Diameter (M) : 6 mm
Immersion Length (L) : 50 mm