

POTTING BOXES

UNIVERSAL ENCLOSURES

HAND HELD CASES

HEAVY DUTY ENCLOSURES

DIN RAIL BOXES

INTERFACE SUPPORTS

CONTROL STATIONS

DIECAST & METAL BOXES

DESKTOP & INSTRUMENT CASES

POTTING BOXES

19" ENCLOSURES

19" CABINETS

DEVELOPMENT BOARDS

CUSTOM SIZED ENCLOSURES

CUSTOM SERVICES

500 Series Flanged Potting Boxes

A comprehensive range of flame retardant ABS boxes with flush-fitting lid and flanged body for partial or complete potting of electronic components

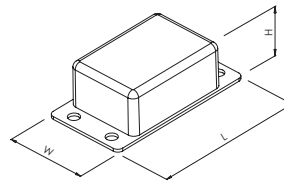
- Moulded in ABS
- Flush-fitting lid mounted by 4x fixing screws
- Lugs provide added security once mounted by restricting access
- Flanged body with 4x mounting holes
- Ideal for partial or complete potting
- Compliant with water absorption specifications to DIN53495
- High rigidity and impact strength
- Highly resistant to most chemicals



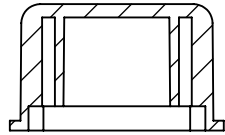
SPECIFICATION

Materials	Lid & base ABS, UL94-V0 to order
Operating temperature	-20°C to +94°C
Standard colours	Black
Standard unit includes	Lid & base 4x screws Packs of 5

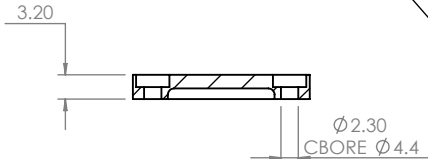
BLACK	LENGTH	WIDTH	HEIGHT
RX505A	36mm	26mm	17mm
RX506A	42mm	30mm	19mm
RX507A	48mm	34mm	21mm
RX508A	56mm	40mm	24mm
RX509A	66mm	46mm	26mm
RX510A	76mm	52mm	29mm



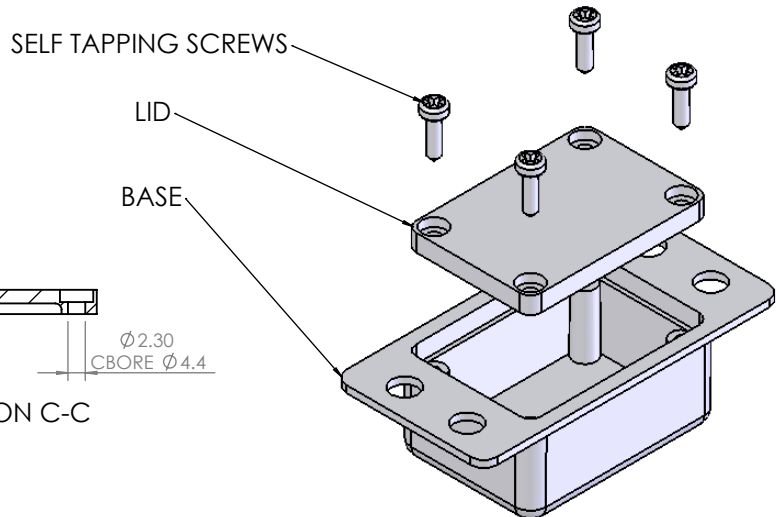
OVERALL ASSEMBLY DIMENSIONS:
 EXTERNAL - 35.70 (56) x 25.5 (28.3) x 16.7
 INTERNAL - 32 x 21.8 x 11.75



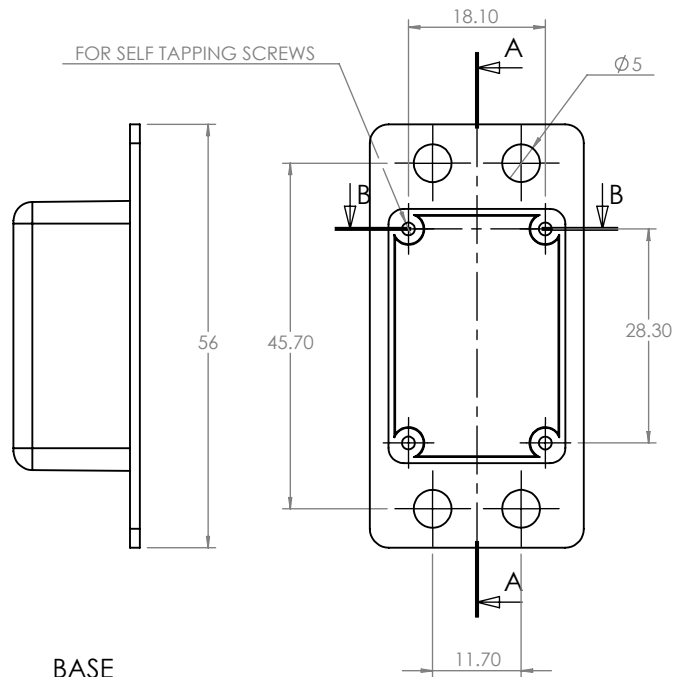
SECTION B-B



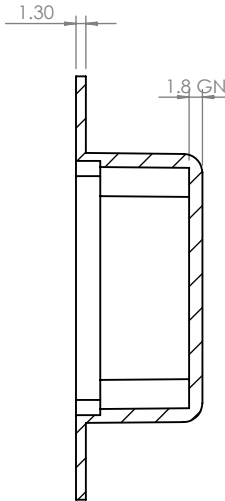
SECTION C-C



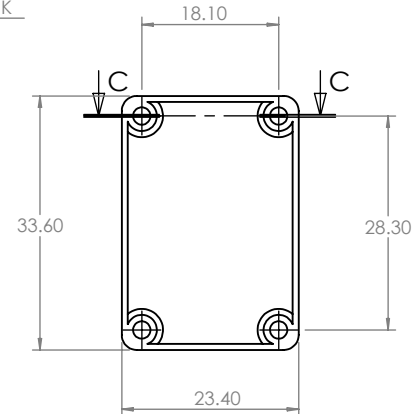
ISO VIEW



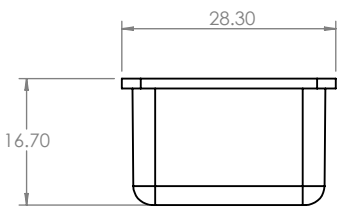
BASE



SECTION A-A



LID

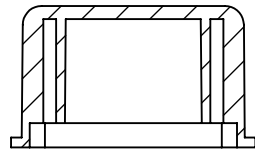


		UNLESS OTHERWISE SPECIFIED: DIMENSIONS ARE IN MILLIMETERS		DO NOT SCALE DRAWING	REVISION. 0
		FINISH: LIGHT SPARK		TITLE: ASSEMBLY DRG FOR 505	
JAMES CARTER RD, MILDENHALL, SUFFOLK. IP28 7DE TEL: 01 638 716101 FAX: 01 638 716554 EMAIL: SALES@CAMDENBOSS.COM WEB: www.CAMDENBOSS.COM		MATERIAL: ABS	DWG NO. 505	A4	
DRAWN	S.HARDINGE	SJH	22/06/06	SCALE: 1 : 1	SHEET 1 OF 1
CHK'D	-	-	-	PROJECTION:	

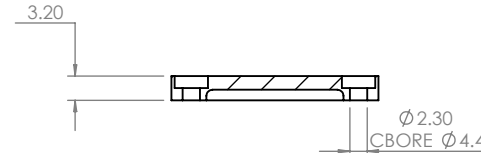
OVERALL ASSEMBLY DIMENSIONS:

EXTERNAL - 41.7 (62) x 29.5 (32.3) x 18.7

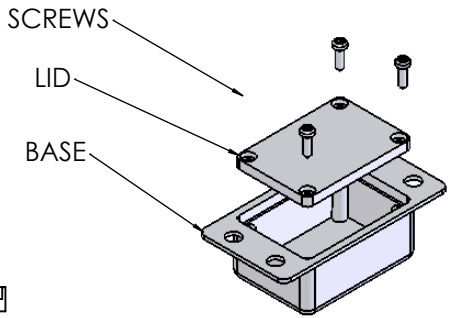
INTERNAL - 38 x 25.8 x 13.75



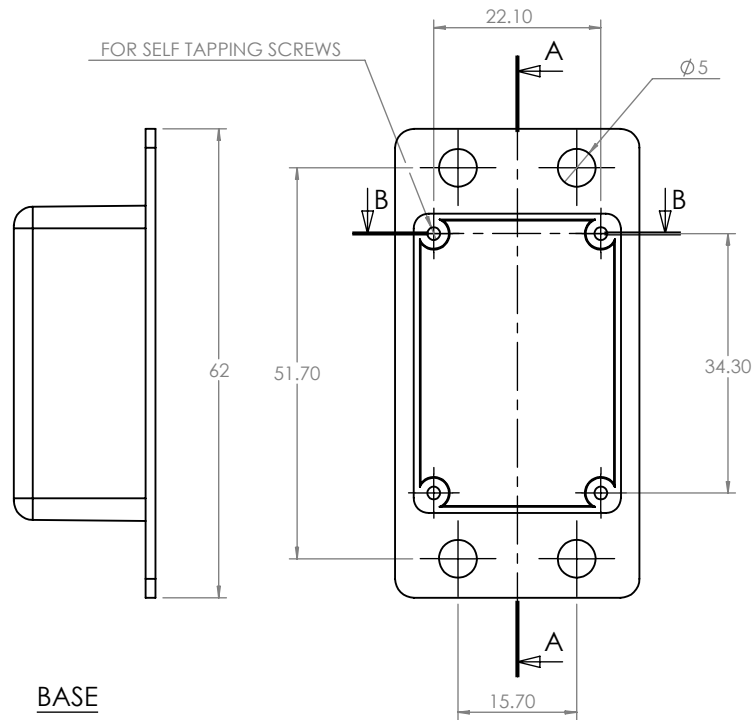
SECTION B-B



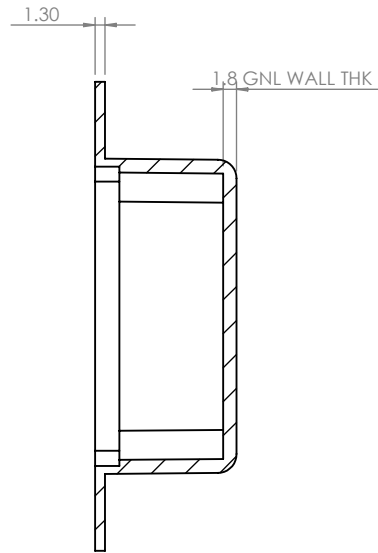
SECTION C-C



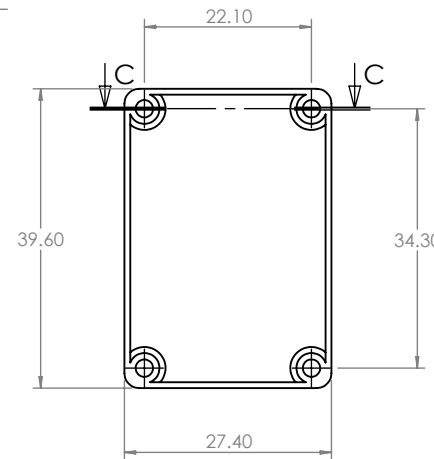
ISO VIEW
1:2



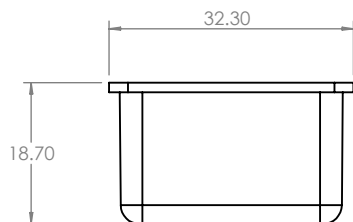
BASE



SECTION A-A



LID

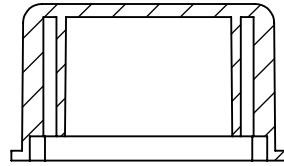


		UNLESS OTHERWISE SPECIFIED: DIMENSIONS ARE IN MILLIMETERS		DO NOT SCALE DRAWING	REVISION. 0
		FINISH: LIGHT SPARK		TITLE: ASSEMBLY DRG FOR 506	
JAMES CARTER RD, MILDENHALL, SUFFOLK, IP28 7DE TEL: 01638 716101 FAX: 01638 716554 EMAIL: SALES@CAMDENBOSS.COM WEB: WWW.CAMDENBOSS.COM		MATERIAL: ABS	DWG NO. 506	A4	
DRAWN: S.HARDINGE	SIGNED: SJH	DATE: 22/06/06	PROJECTION:	SCALE: 1:1	SHEET 1 OF 1

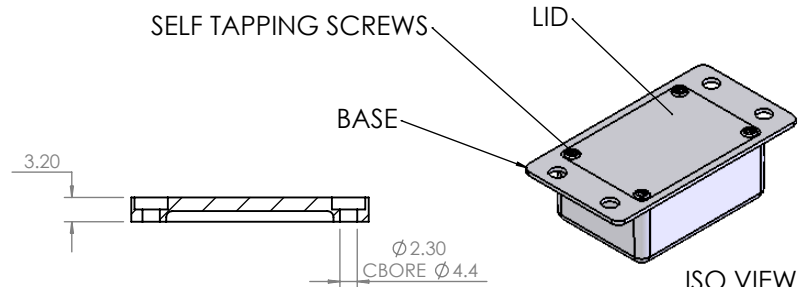
OVERALL ASSEMBLY DIMENSIONS:

EXTERNAL - 47.7 (68) x 33.5 (36.3) x 20.7

INTERNAL - 44 x 29.8 x 15.75

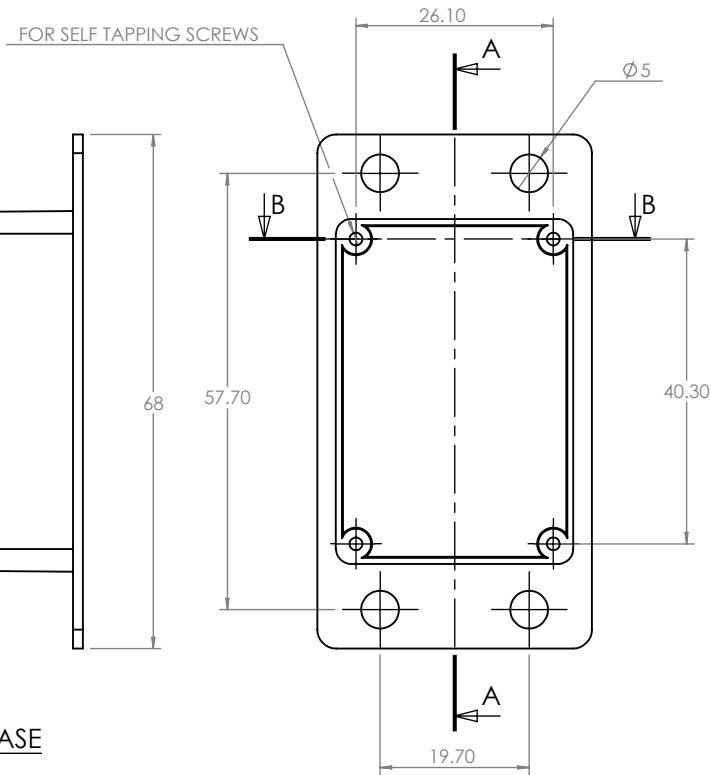


SECTION B-B

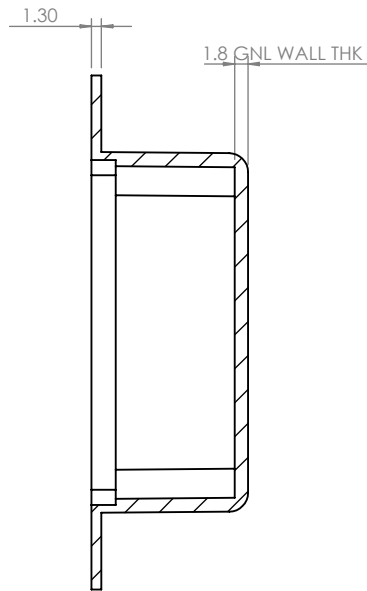


SECTION C-C

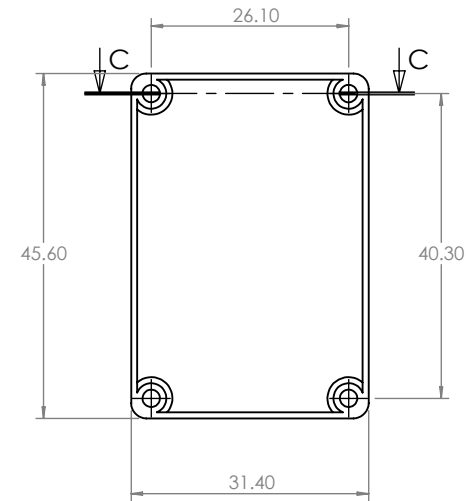
ISO VIEW
1:2



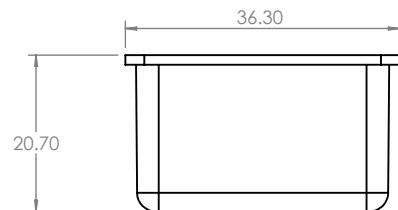
BASE



SECTION A-A



LID

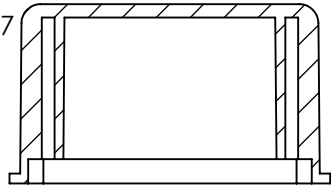


		UNLESS OTHERWISE SPECIFIED: DIMENSIONS ARE IN MILLIMETERS		DO NOT SCALE DRAWING	REVISION. O
		FINISH: LIGHT SPARK		TITLE: ASSEMBLY DRG FOR 507	
JAMES CARTER RD, MILDENHALL, SUFFOLK, IP28 7DE TEL: 01 638 716101 FAX: 01 638 716554 EMAIL: SALES@CAMDENBOSS.COM WEB: WWW.CAMDENBOSS.COM		MATERIAL: ABS	DWG NO. 507	A4	
DRAWN S.HARDINGE	SIGNED SJH	DATE 22/06/06	PROJECTION. 	SCALE: 1 : 1	SHEET 1 OF 1

OVERALL ASSEMBLY DIMENSIONS:

EXTERNAL - 55.7 (76) x 39.6 (42.4) x 23.7

INTERNAL - 52 x 36 x 18.75

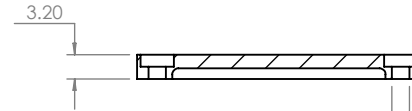


SECTION B-B

SELF TAPPING SCREW

LID

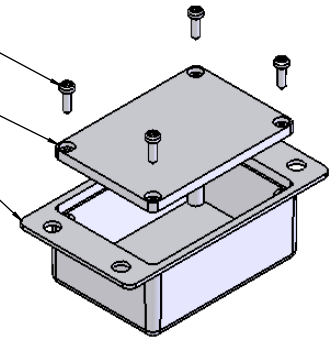
BASE



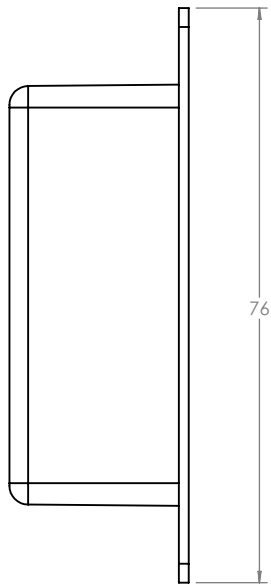
SECTION C-C

Ø2.30
CBORE Ø4.4

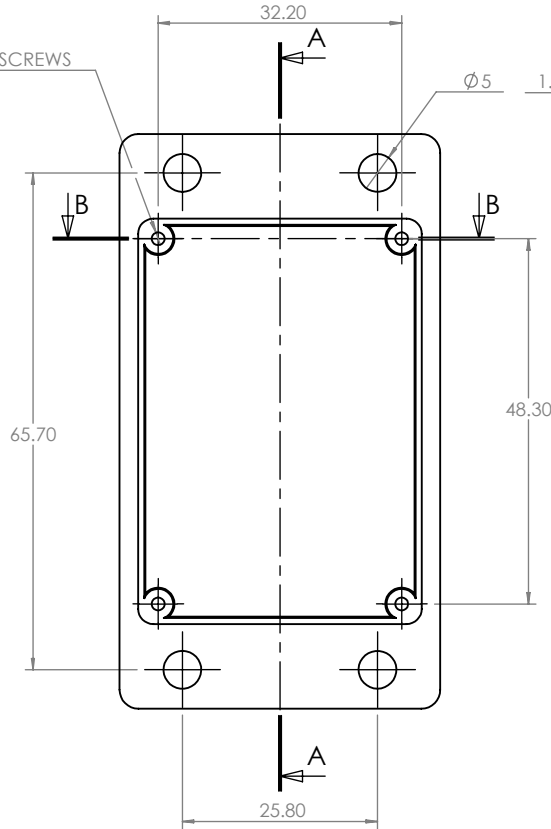
ISO VIEW
1:2



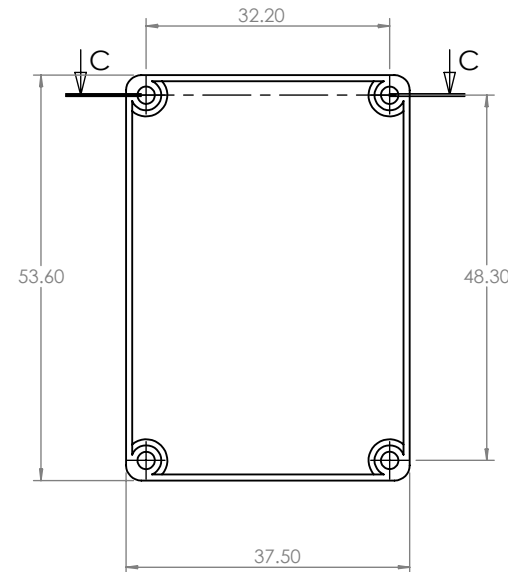
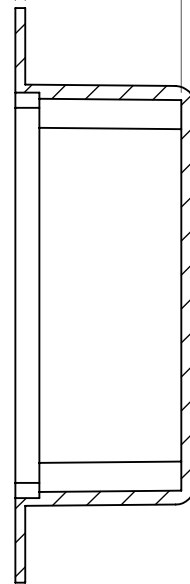
FOR SELF TAPPING SCREWS



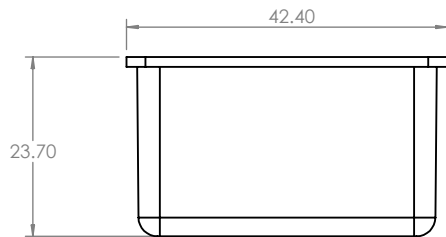
BASE



SECTION A-A



LID



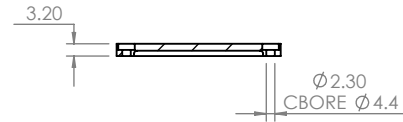
<p>UNLESS OTHERWISE SPECIFIED: DIMENSIONS ARE IN MILLIMETERS</p>		DO NOT SCALE DRAWING	REVISION. 0
		TITLE: ASSEMBLY DRG FOR 508	
JAMES CARTER RD, MILDENHALL, SUFFOLK. IP28 7DE TEL: 01 638 716101 FAX: 01 638 716554 EMAIL: SALES@CAMDENBOSS.COM WEB: WWW.CAMDENBOSS.COM		FINISH: LIGHT SPARK	DWG NO. 508
NAME	SIGNED	DATE	MATERIAL. ABS
DRAWN S.HARDINGE	SJH	22/06/06	PROJECTION.
CHKD -	-	-	SCALE. 1 : 1
			SHEET 1 OF 1

A4

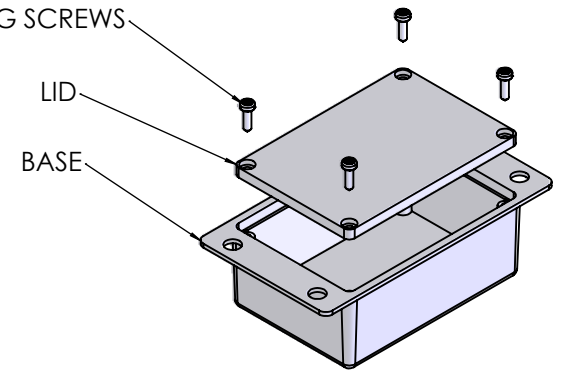
OVERALL ASSEMBLY DIMENSIONS:
 EXTERNAL - 65.6 (85.9) x 45.5 (48.3) x 25.7
 INTERNAL - 61.9 x 41.8 x 20.75



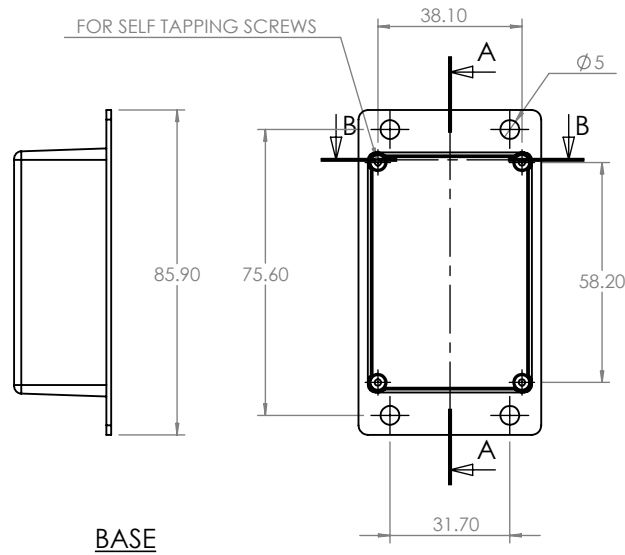
SECTION B-B



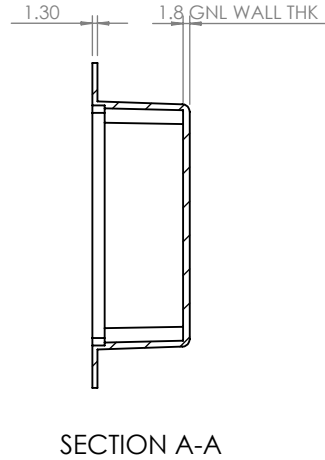
SECTION C-C



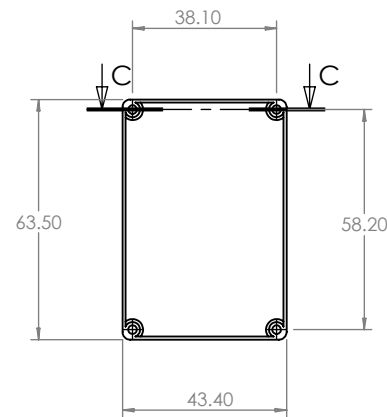
ISO VIEW



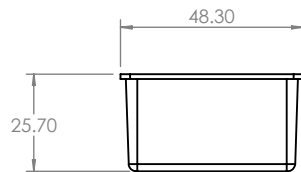
BASE



SECTION A-A



LID



		UNLESS OTHERWISE SPECIFIED: DIMENSIONS ARE IN MILLIMETERS		DO NOT SCALE DRAWING	REVISION. A
		FINISH: LIGHT SPARK		TITLE: ASSEMBLY DRG FOR 509	
JAMES CARTER RD, MILDENHALL, SUFFOLK, IP28 7DE TEL: 01638 716101 FAX: 01638 716554 EMAIL: SALES@CAMDENBOSS.COM WEB: www.CAMDENBOSS.COM		MATERIAL: ABS	DWG NO. RX509A	A4	
DRAWN S.HARDINGE	SIGNED SJH	DATE 21/06/06	PROJECTION. 	SCALE: 1 : 2	SHEET 1 OF 1

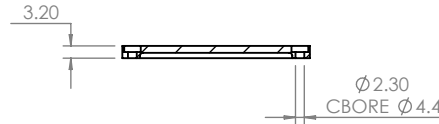
OVERALL ASSEMBLY DIMENSIONS:

EXTERNAL - 75.7 (96) x 51.7 (54.5) x 28.5

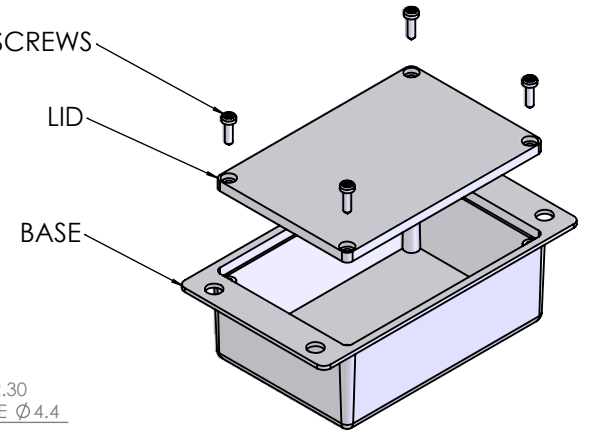
INTERNAL - 72 x 48 x 23.5



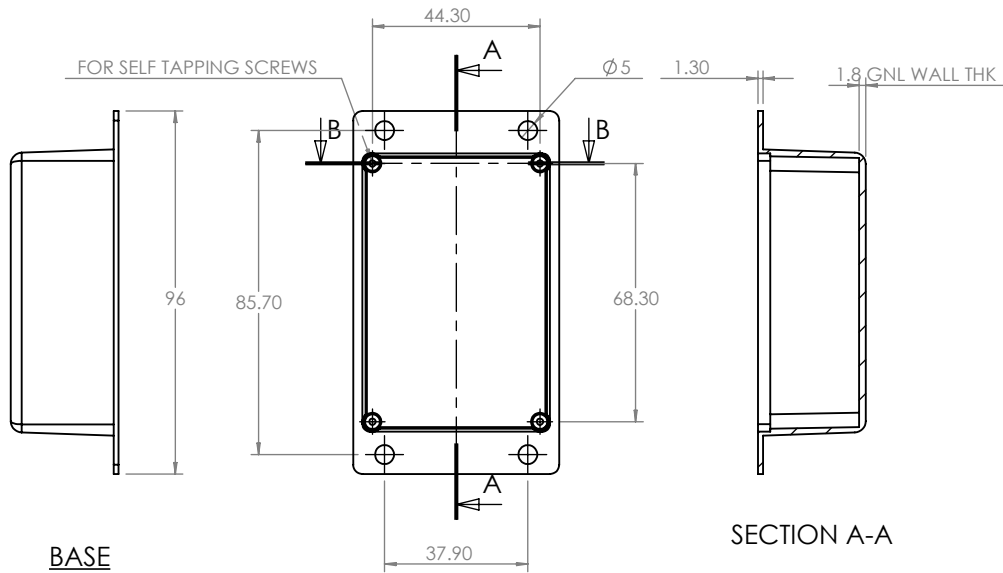
SECTION B-B



SECTION C-C

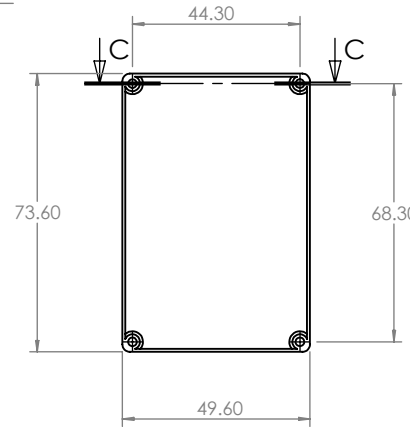


ISO VIEW

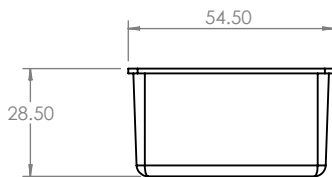


BASE

SECTION A-A



LID



JAMES CARTER RD, MILDENHALL, SUFFOLK, IP28 7DE
 TEL: 01 638 716101 FAX: 01 638 716554
 EMAIL: SALES@CAMDENBOSS.COM
 WEB: WWW.CAMDENBOSS.COM

UNLESS OTHERWISE SPECIFIED:
 DIMENSIONS ARE IN MILLIMETERS

FINISH:
 LIGHT SPARK

MATERIAL:
 ABS

PROJECTION:

DO NOT SCALE DRAWING

REVISION. A

TITLE:

ASSEMBLY DRG FOR 500 SERIES

DWG NO.

RX510A

A4

	NAME	SIGNED	DATE
DRAWN	S.HARDINGE	SJH	21/06/06
CHKD	-	-	-

CHKD

SCALE: 1 : 2

SHEET 1 OF 1