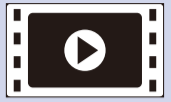
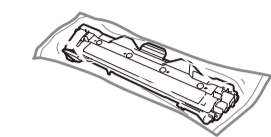
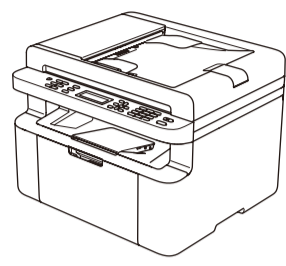


## Unpack the machine and check the components



Watch our FAQ Videos for help with setting up your Brother machine: [solutions.brother.com/videos](http://solutions.brother.com/videos).



Inbox Toner Cartridge



Telephone Line Cord  
(For MFC models)



CD-ROM



A5 Long Edge Paper Input Support

Read the Product Safety Guide first, then read this Quick Setup Guide for the correct installation procedure.

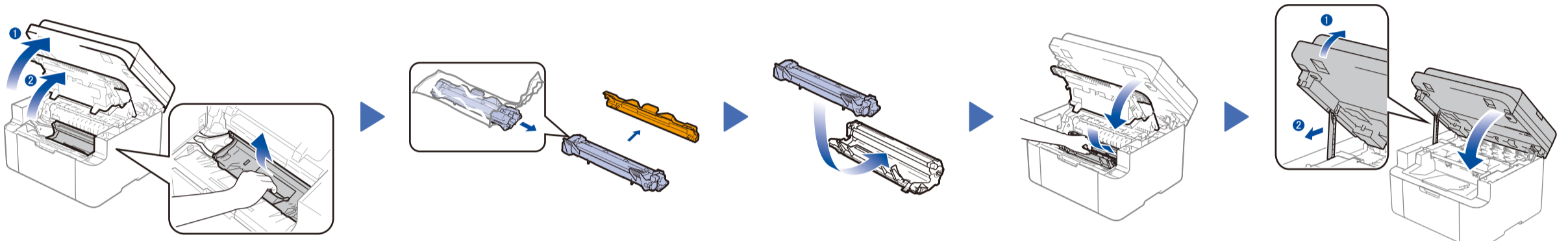
**NOTE:**

- The components included in the box and the AC power plug may differ depending on your country.
- The illustrations in this Quick Setup Guide are based on the MFC-1910W.
- You must purchase the correct interface cable for the interface you want to use.

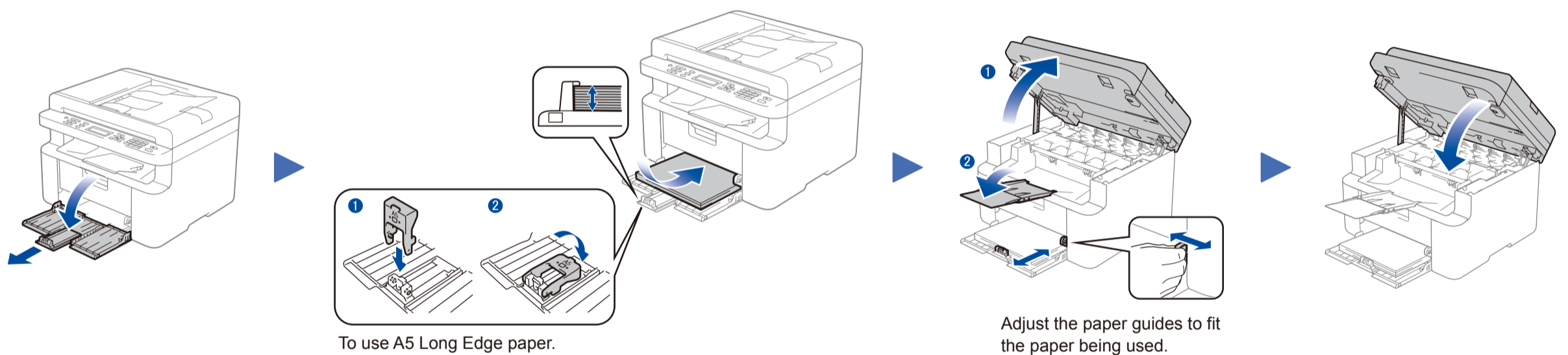
**USB cable**

We recommend using a USB 2.0 cable (Type A/B) that is no more than 2 metres (6 feet) long.

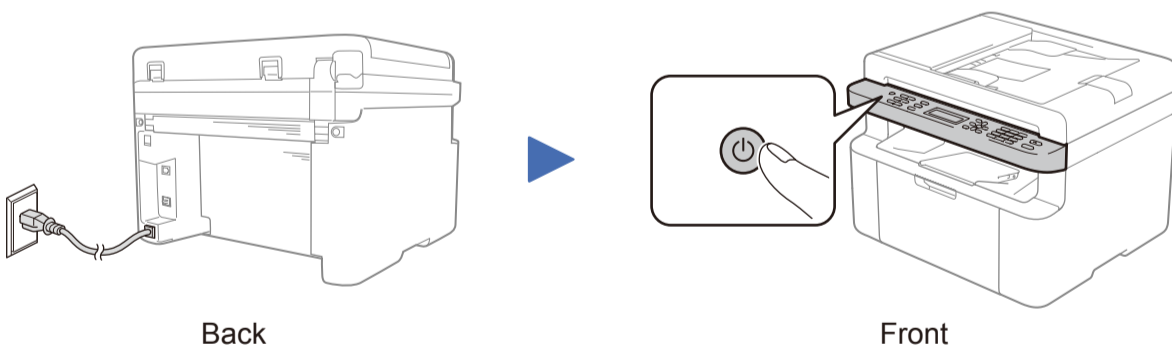
### 1 Remove the packing materials and install the toner cartridge



### 2 Load paper in the paper tray



### 3 Connect the power cord and turn on the machine



### 4 Select your country/language (Initial setup only)

Depending on your machine, you may be required to set your country or language. If required, follow the on-screen instructions.

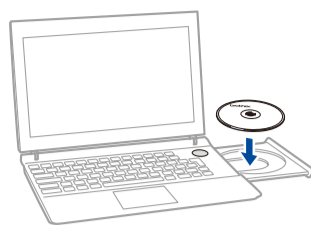
### 5 Change your language (if needed) Only for certain models

- (DCP models)
  - Press **Menu**, and then press **▲** or **▼** to choose 1.General Setup.
  - Press **OK**.
 (MFC models) Press **Menu**, **0**, **0**, and go to step 3.
- Press **▲** or **▼** to choose 0.Local Language, and then press **OK**.
- Press **▲** or **▼** to select your language, and then press **OK**.
- Press **Stop/Exit**.

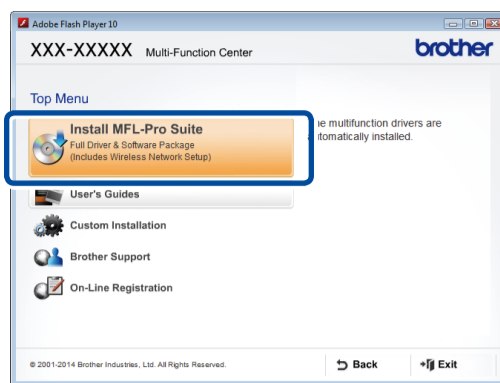
### 6 Connect the machine to your computer/mobile device

- Windows® PC with a CD-ROM drive, go to step **6A**
- Windows® PC without a CD-ROM drive, go to step **6B**
- Macintosh, go to step **6B**
- Mobile device users with a WPS/AOSS™-supported access point/router, go to step **6C**

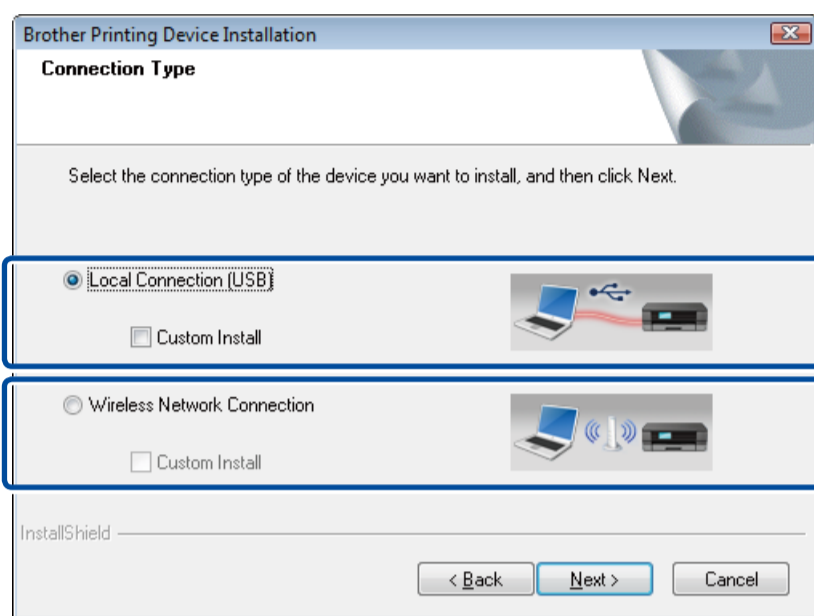


**NOTE:**

If the Brother screen does not appear automatically, go to **Computer (My Computer)**.  
(For Windows® 8: click the (File Explorer) icon on the taskbar, and then go to **Computer**.)  
Double-click the CD-ROM icon, and then double-click **start.exe**.



Follow the on-screen instructions until the **Connection Type** screen appears.

**Connection Type**

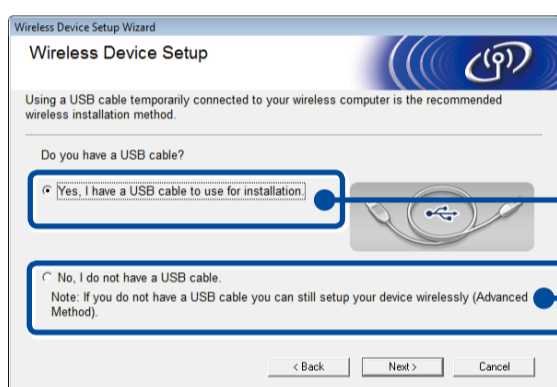
For USB Connection

For Wireless Network Connection  
We recommend preparing a USB cable to use temporarily during the wireless setup.

Follow the on-screen instructions to continue installation.

**Finish****NOTE:**

If connection is unsuccessful, repeat this step.

**Wireless Network Connection****[Recommended]**

Select this option if you have a USB cable to use temporarily for wireless setup.

Select this option if you do not have a USB cable.

Follow the on-screen instructions to continue installation.

**Finish****NOTE:**

If connection is unsuccessful, repeat this step.



Download the full driver and software package from the Brother Solutions Center.

(For Windows®) [solutions.brother.com/windows](http://solutions.brother.com/windows)

(For Macintosh) [solutions.brother.com/mac](http://solutions.brother.com/mac)

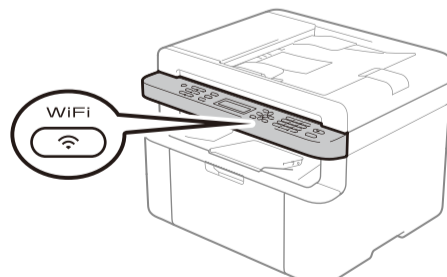
After you download the driver and software package, follow the on-screen instructions until the **Connection Type** screen appears. Refer to **6A Configuration using the CD-ROM (Windows®)**.



If your wireless LAN access point/router supports automatic wireless (one-push) setup (WPS/AOSS™), you can set up your machine without using a computer.



Press the WPS or AOSS™ button on your wireless LAN access point/router.



Press the **WiFi** button on your machine.

Wireless setup is now complete.

**NOTE:**

Before you can use your machine with your mobile device, download "Brother iPrint&Scan."

**Print and scan using your mobile device**

Download "Brother iPrint&Scan" to start using your machine with mobile devices.



[solutions.brother.com/ips](http://solutions.brother.com/ips)