

**Contents**

Page

**Installation**

|                           |     |
|---------------------------|-----|
| System requirements.....  | 1   |
| Installation.....         | 2-3 |
| Uninstall process .....   | 4   |
| First program start ..... | 4   |
| Test equipment.....       | 5-6 |

**Measuring**

|                      |     |
|----------------------|-----|
| Start Measuring..... | 7-9 |
| Certificates .....   | 10  |

**Modifications**

|                       |       |
|-----------------------|-------|
| Language support..... | 11    |
| Print templates ..... | 12-13 |

**Master data**

|                           |       |
|---------------------------|-------|
| Manufacturer.....         | 14    |
| Article test object ..... | 14    |
| Article test unit.....    | 15    |
| Measuring range.....      | 15    |
| Test value .....          | 16    |
| Unit.....                 | 16    |
| Precision .....           | 17    |
| Standard .....            | 17    |
| Test specification.....   | 18-19 |

**Database**

|                            |       |
|----------------------------|-------|
| Database .....             | 20    |
| Data import / export ..... | 21-22 |
| Update.....                | 23    |
| Hotline / Contact.....     | 24    |

Dear customer,

You have made a good choice and you want to put into operation the testing software.

**For your safety:** Please read this documentation prior to putting the software into operation.

**General information:** Please make sure that the operator/user of this software (HAZET 7901 E-GB) and of the electronic torque testers (HAZET 7901 E, 7902 E, 7903 E) reads this documentation as well as the operating instructions of the electronic torque testers (HAZET 7901 E, 7902 E, 7903 E) and fully understands all information given therein **prior to the first operation**.

This documentation contains important advice which is necessary for a safe and trouble-free operation of your electronic torque tester and of the testing software.

**Intended Use:**

*The testing software is used for the collection and documentation of test values in the course of the calibration of torque wrenches.*

HAZET will not be liable for any injuries to persons or damage to property originating from improper application, misuse of the software or a disregard of the safety regulations.

Any deviation from the intended use and/or any misapplication of the software is not allowed and will be considered as improper use. Any claims against the manufacturer and/or its authorized agents because of damage caused by improper use of the tool are void.

Any personal injury or material losses caused by improper use are the sole responsibility of the operator and user.

**System requirements**

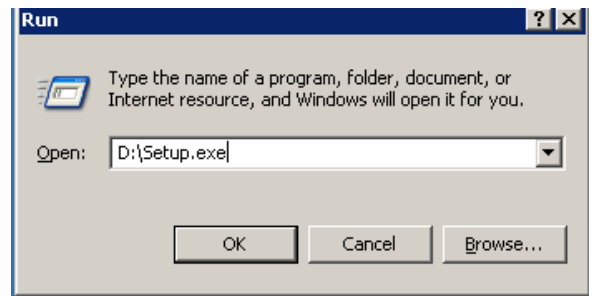
|                         |   |
|-------------------------|---|
| Operating system:       | Windows 2000®/XP®/Vista®  |
| Required storage space: | at least 50 MB free storage space   |
| Main storage:           | at least 256 MB   |
| Processor:              | from Pentium III on   |
| Drive:                  | CD or DVD drive   |
| Connections:            | COM (connection cable delivered with the electronic torque tester)<br>or<br>USB (USB / Serial connection cable, not included in delivery) |
| Graphic resolution:     | at least 1024 x 768 pixels  |

**1. Installation**

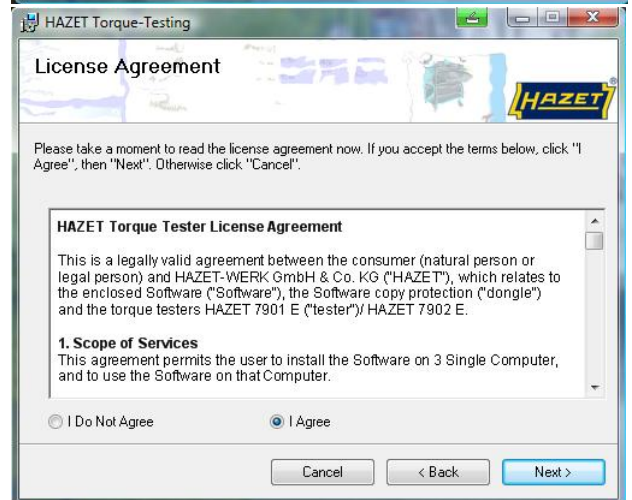
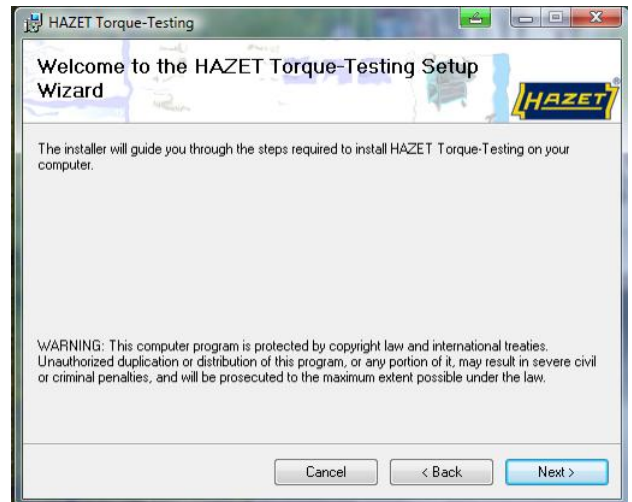
Start Windows and put the CD-ROM into the CD or DVD drive of your computer. If the CD does not start automatically, push the <Start> button followed by <Complete>.

Enter the letter of your CD-ROM drive in the command line and enter the command <Setup> and confirm by clicking on <OK>.

*You might need the rights of an administrator for installing. If you don't have the rights of an administrator get in touch with your system administrator.*

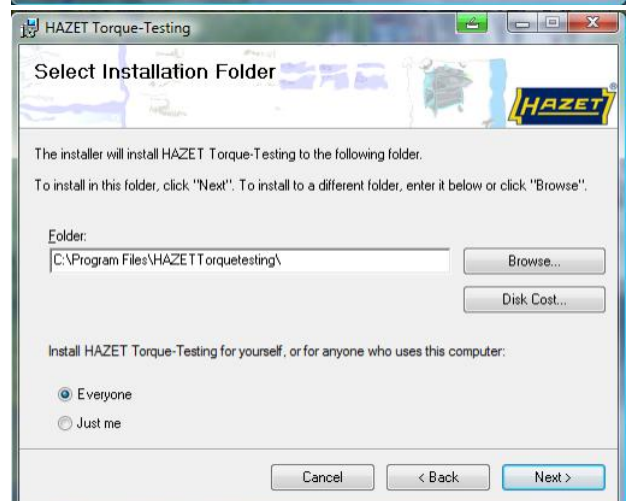


Confirm the loading by clicking on <Next>.



Hinweis: Falls die Zugangsbohrung korrodiert ist, muss sie gereinigt werden um das Einführen Absteckdorns zu ermöglichen.

Read the license agreement and confirm by clicking on Hinweis: Falls die Zugangsbohrung korrodiert ist, muss sie gereinigt werden um das Einführen Absteckdorns zu ermöglichen. </ Agree> followed by <Next>.



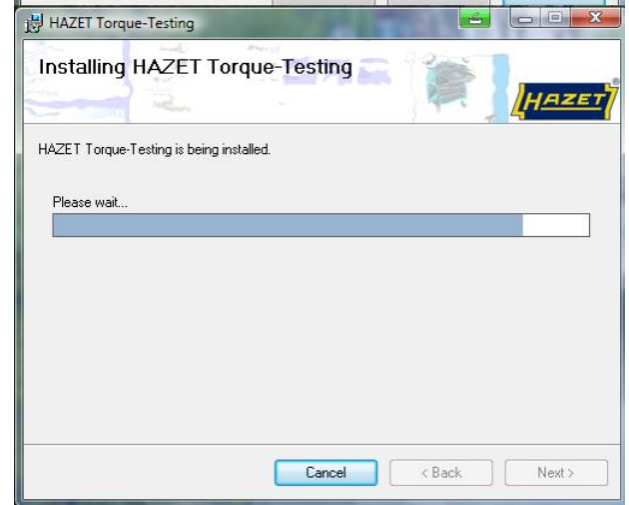
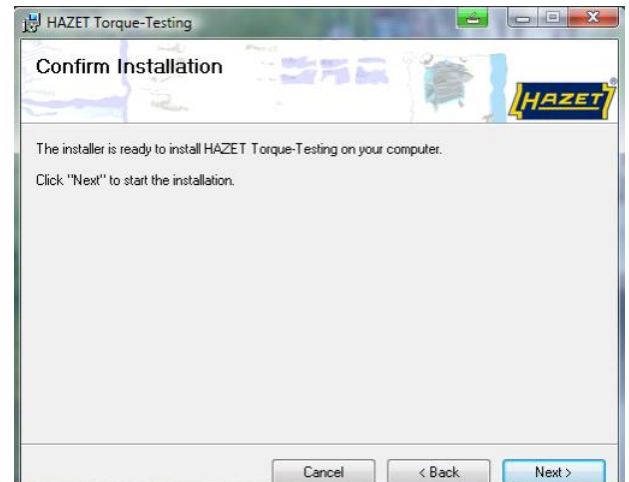
During the installation you will get the recommendation to install the program to the folder <C:\Programme\HAZETTorquetesting>.

If you wish to install the program to a different folder, this is possible as well. Click on <Browse> and enter the folder name in <Folder:> .

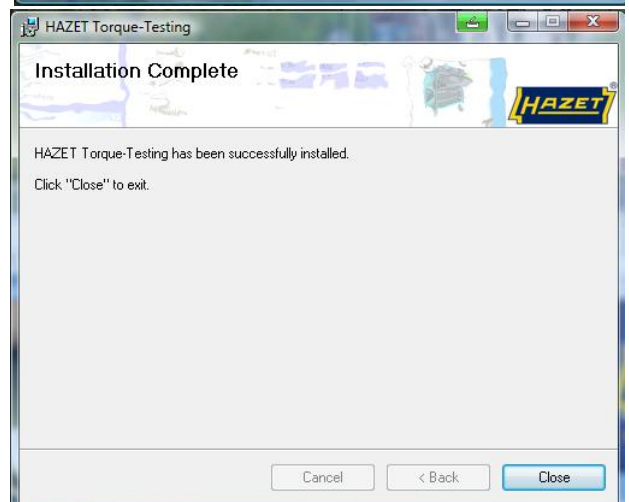
**Note:** We recommend using the preset installation path as the program can be found more easily in case of questions/doubts.

By marking <Everyone> or <Just me> you can assign an access authorisation to the folder. Confirm by clicking on <Next>.

Start the installation by clicking on <Next>.



Complete the installation by clicking on <Close>.



If the computer on which you have installed the program has internet access, you will get to the HAZET website once the installation is completed.

By clicking on the HAZET logo you will get to the website at any time. There you will find besides the most recent Illustrated List accessories and spare parts for torque wrenches as well.

If the computer does not have internet access you will read the message:

*„Access to this website is denied.“*

### Uninstall process

To uninstall the program select <System Control> <Software> on <HAZET Torque-Testing> and click on <Edit/Delete>.

**Note:** Be aware that previously entered data will also be deleted during the uninstall process.

### First program start

Connect the dongle (included in delivery) to an USB interface of your computer. The dongle will be recognized automatically by the operating system.

Start the program by clicking on

<Start> <Programme> <HAZET Torque-Testing>.

**Note:** To start the program even more quickly you can install an „icon“ on the desktop.

Click on the national colours to select either „German“ or „English“.

Fill in the program registration. The license number as well as further information will be found in the accompanying letter.

Confirm this entry by clicking on <OK>.

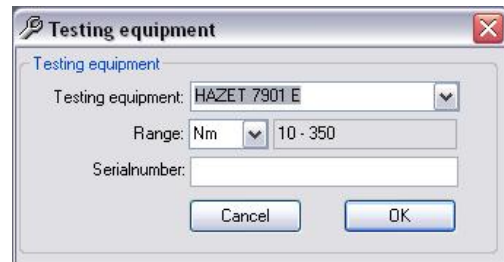


The 'License-Key' dialog box contains the following fields and controls:

- Name: [Text input field]
- E-Mail: [Text input field]
- Key: [Text input field]
- Buttons: Cancel, OK
- Icon: A key icon is located at the bottom left of the dialog.

Now enter the data of the testing device. The measuring range, the torque unit as well as the serial number will be found on the sticker on the side of the electronic torque tester.

Confirm this entry by clicking on <OK>.



The 'Testing equipment' dialog box contains the following fields and controls:

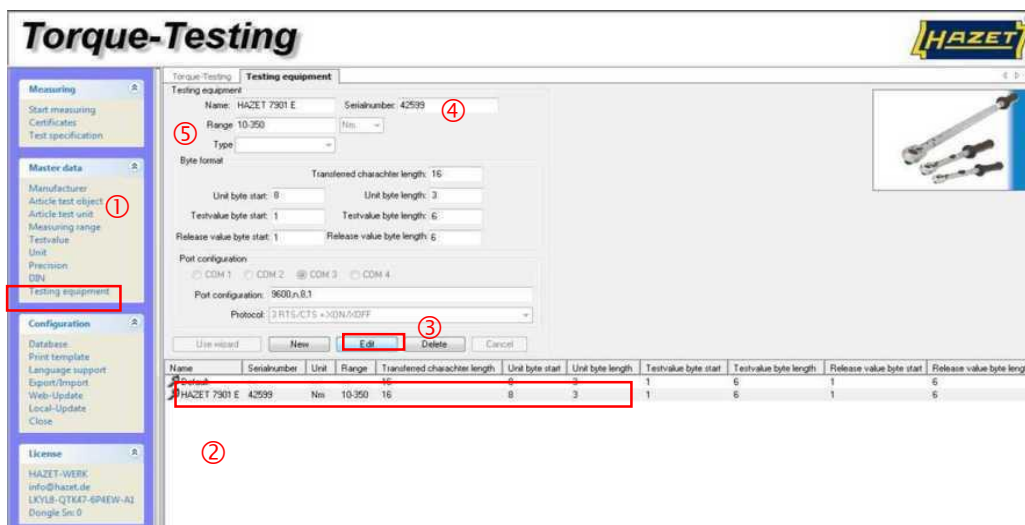
- Testing equipment: [Dropdown menu with 'HAZET 7901 E' selected]
- Range: Nm [Dropdown menu] 10 - 350 [Text input field]
- Serialnumber: [Text input field]
- Buttons: Cancel, OK

## Test equipment

Here you can modify the technical data of the testing device, the connection conditions and the transmission specifications which have been installed during the loading process of the program, or register another torque tester.

**Note:** Bullets 1 to 6 do not have to be modified if the program was properly installed.

If the data transfer from the testing device to the computer cannot be realised, the connection conditions and the transmission specifications have to be adapted to your computer: Bullets 7 to 13



- In the select list select ① <Master data> <Testing equipment>.
- To modify: mark on list ② on the screen at the bottom on the right the torque tester e.g. HAZET 7901E.  
To register a new torque tester: click on <New >. The input boxes are yellow
- To modify: click on ③ <Edit>.  
To register: enter in the box <Name> the denomination of the new torque tester

**CAUTION:** The spelling of the torque tester has to fit in with the spelling of the testing specifications.

The input boxes are respectively yellow.

- In the box ④ <Serial number :> enter the serial number of the torque tester.
- In the box ⑤ <Range> enter the measuring range of the testing device.
- Use the scroll bar to select the torque unit of the torque tester.

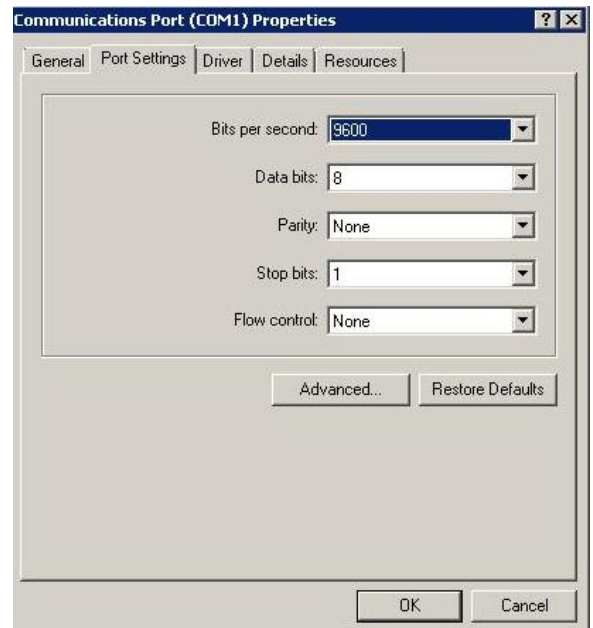
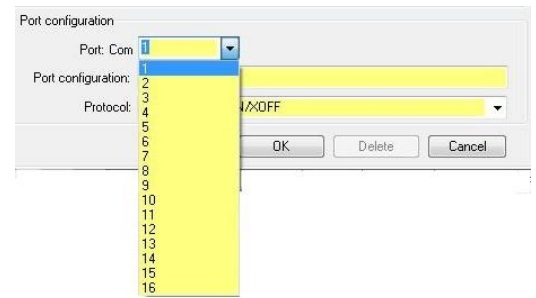
**Testing equipment / serial interface**

7. In the box <Port Configuration> you can modify the connection conditions and transmission specifications of your computer.
8. The settings <COM 1> up to <COM 4> indicate the serial interface on the computer. Mark the COM interface to which you connect the testing device.
9. The Port Configuration defines the value transmission of the testing device to the PC and always remains the same for the testing device HAZET 7901 E, 7902 E and 7903 E.

**Baud rate**                **9600**  
**Parity**                    **N (none)**  
**Data bits**                **8**  
**Stop bits**                **1**  
**Flow control**            **none**

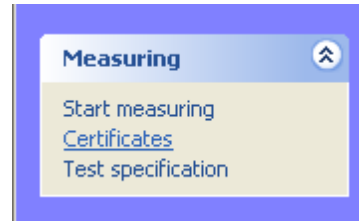
10. To check the settings of the COM port on your PC, select <Connections> in the device manager and click on <Properties>. Select <Connection conditions> on the register card and enter the data from the above mentioned table.
11. The entries are saved by clicking on <OK>.
12. The settings for <Protocol> depend on the internal cable configuration and can be selected by using the scroll bar.
13. Click on <OK> to save the entries.

**Note:** *Mandatory fields left unfilled will be red after confirming by clicking on <OK>.*

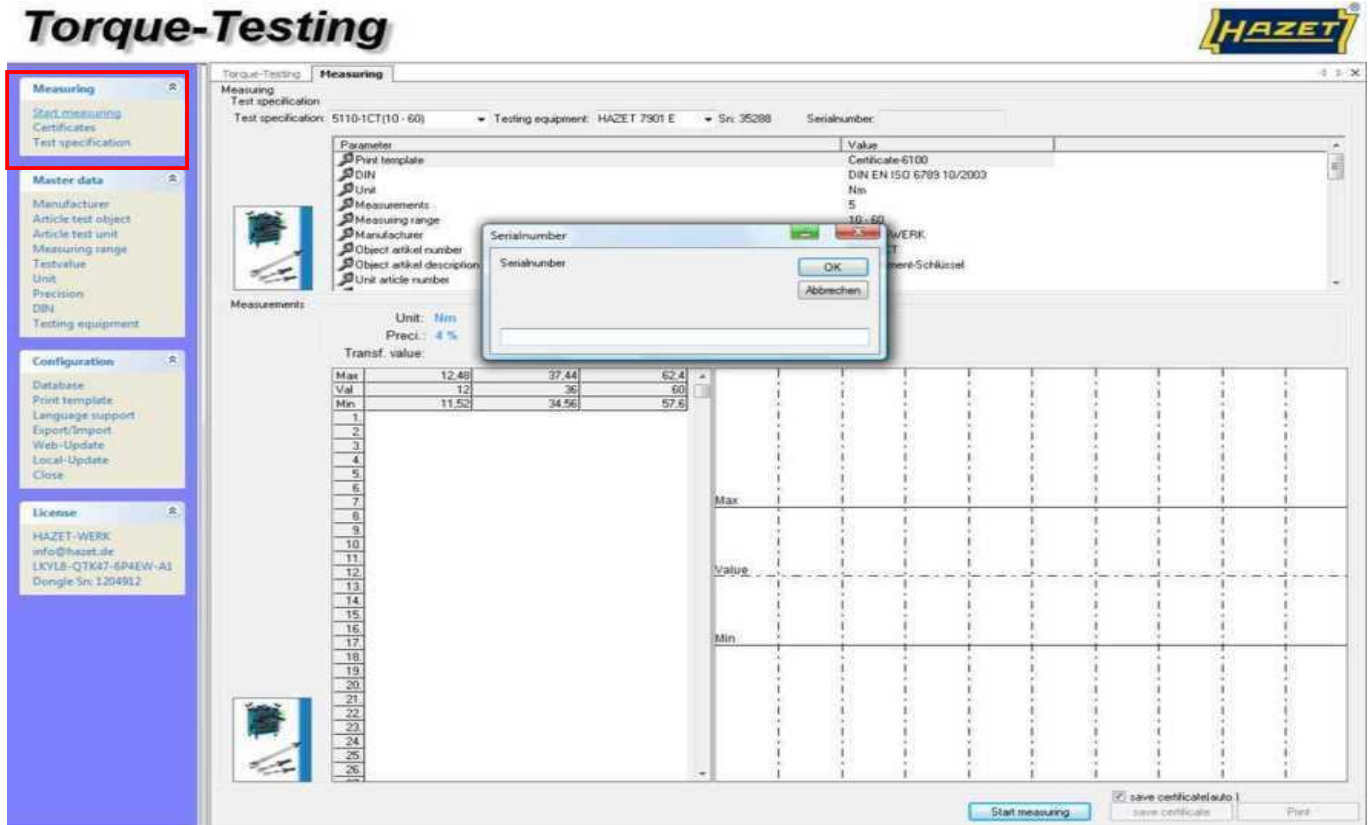


## Measuring

In the area *<Measuring>* you can either check the torque wrenches being saved in the database and for which a test certificate was already established or save and print new certificates. The system contains all torque wrenches from the current HAZET product range whose test values are in the range from 2 up to 1000 Nm.



## Start Measuring



Select *<Start measuring>* on the select list *<Measuring>*.

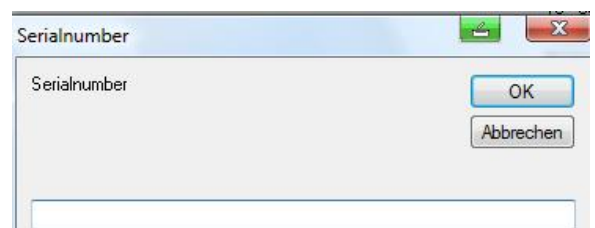
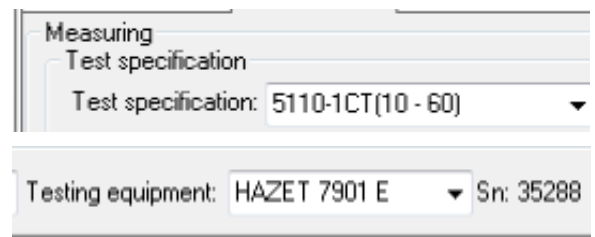
Select the required torque wrench in the box *<Test specification>* by using the scroll bar.

In the box *<Testing equipment>* the torque tester e.g. „HAZET 7901 E“ will be displayed.

In case no torque tester appears in the red box *<Testing equipment>*, the required torque tester has to be registered (see under *testing equipment* – page 5)

Note: the measurement range of the torque tester must be adapted for the test values of the torque range

Enter the serial number of the torque wrench to be tested in the box *<Serial number>*.



### Measuring / Start Measuring

In order to store the test values automatically to establish a test certificate, put a check mark in the box <Save certificate (auto.)>.

To test a torque wrench without saving the test values, remove the check mark in the box.

Start measuring by clicking on the box <Start measuring>.

Start testing the selected torque wrench by using the **smallest test value** in the line <Val>.

**Note:** The <Min> and <Max> values indicate the upper and lower limit values of the test value for the required tolerance.

Set the torque value and the torque tester according to the test torque value indicated in the operating instructions. When using the HAZET Torque Tester 7901 E please make sure to select the operation mode "click point indication"!

Execute the test according to the standards and directives in effect. According to DIN EN ISO 6789: 2003, it is necessary to determine five (5) consecutive test values within the selected tolerance range.

**Note:** Observe the waiting time between the test values when making the test. The torque tester is ready for use when there is no more test value visible on the display of the testing device and when you can hear an acoustical signal.

If the torque values are within the selected tolerance limits, the values in the list box and the measuring points in the diagram will be green.

If the torque values are not within the selected tolerance limits, the values in the list box and the measuring points in the diagram will be red.

Once the first test value has been tested, there will be an information box with the note „Please start testing the next value“. Start measuring the next test value by pushing the <Enter-Button> or by clicking on the box <OK>.

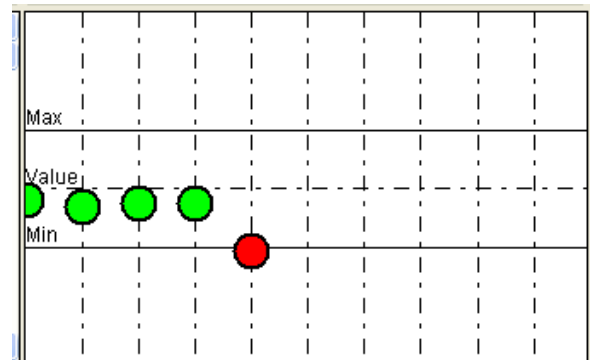
Now set the torque wrench and the torque tester according to the next test value indicated in the operating instructions.

Once all the test values have been tested, there will be an information box with the note „Finished“. Complete the measuring by pushing the <Enter-Button> or by clicking on <OK>.

If a check mark was put in the box <Save certificate (auto.)>, there will be an information box with the note „Finished“, „Certificate saved“.

Confirm the saving of the certificate by pushing the <Enter-Button> or by clicking on <OK>.

|   |      |   |  |
|---|------|---|--|
| <input checked="" type="checkbox"/> Zertifikat speichern(auto.) |      |   |  |
| <input type="button" value="Starte Messung"/>                   |      | <input type="button" value="Zertifikat speichern"/> | <input type="button" value="Drucken"/> |
| Max   | 41,6 | 124,8   | 208                                    |
| Val   | 40   | 120   | 200                                    |
| Min   | 38,4 | 115,2   | 192                                    |
| 1.  | 38,3 |   |  |
| 2.  | 39,6 |   |  |
| 3.  | 39,6 |   |  |
| 4.  | 39,5 |   |  |
| 5.  | 39,7 |   |  |
| 6.  |      |   |  |
| 7.  |      |   |  |
| 8.  |      |   |  |
| 9.  |      |   |  |
| 10.   |      |   |  |





## Measuring

If no check mark was put in the box <Save certificate (auto.)>, the certificate can be saved manually by clicking on the box <Save certificate>.

By clicking on the box <Print> you will be able to see a print preview of the certificate. In the print preview you can select the printer from the list <Printer> and start printing by clicking on <Print>.

The Torque wrench should be recalibrated, if you reach only out-of-range measurements in 10 successive attempts. In case you need a proof for this, please click <Save (Testvalue)> in order to create a report in PDF format.

**Note:** To set a torque wrench, e.g. after repair works, you will find out the relevant values from the smallest test value in the table.

By clicking on the box <Stop measuring > you delete all the values.

## Certificates

In order to search for saved certificates select on the select list <Measuring> <Certificates>.

All saved certificates will be displayed in the list.

Certificates can be selected according to the serial number of a torque wrench. Enter the serial number of the torque wrench for the required certificate in the box <Serial number:>.

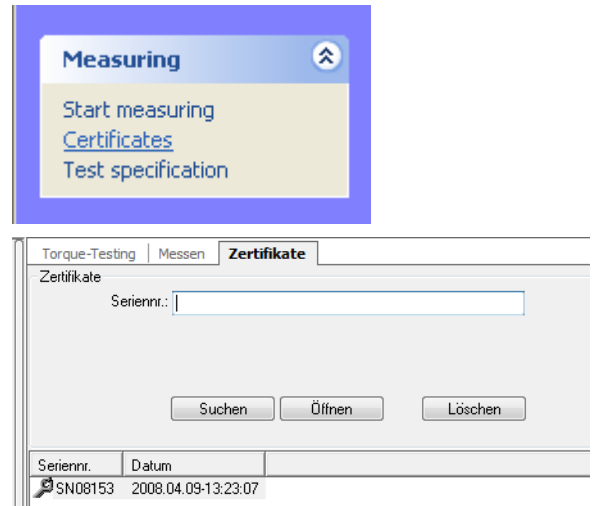
By clicking on the box <Search> the certificate for the serial number which was entered before will be selected from the list.

By clicking in the list every single certificate can also be selected and marked directly.

By clicking on the box <Open> you will see the print preview for the certificate.

In the print preview you can select the printer on the list <Printer> and start the printing process by clicking on <Print>.

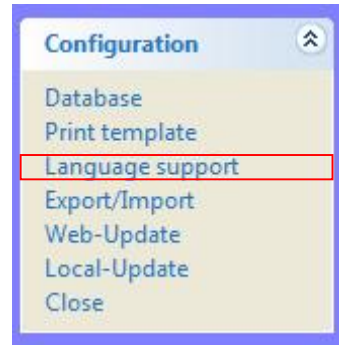
By clicking on the box <Delete> the selected certificate will be deleted.



## Modifications / Language support

Thanks to the feature „language support“ the user can create his own user interface, table and box designations in a different language.

Select <Language support> on the select list <Configuration>.



On the list <Current language> you can select another language by using the scroll bar. Mark the selected language by clicking on it.

Save the selected language by clicking on the box <Set as default>.

**Note:** In the basic version the languages „German“ and „English“ are available.

To install another language, click on the box <New>.

You will see the dialog box <Language>.

Use the scroll bar to select the flag of the selected language.

Enter the selected language in the title block.

Confirm by clicking on <OK>.

Select on the list <Current language> the newly installed language by using the scroll bar.

On the bottom of the screen you can click on the terms on the right side and replace them by the required translations.

Save the translation by clicking on the box <Save>.

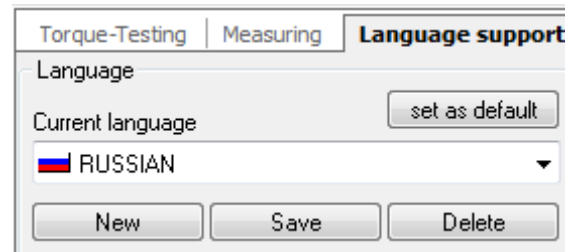
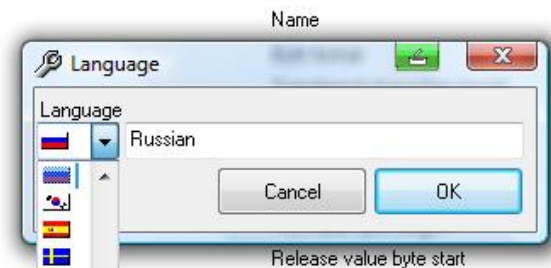
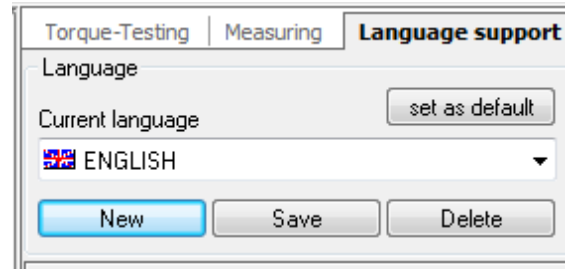
**Note:** The language support returns to the language which was originally „Set as default“.

Select the newly installed language by using the scroll bar and save by clicking on <Set as default>.

By clicking on the box <Delete> you can delete a selected language. You will be able to read an information box in which you have to confirm the deletion by clicking on <Yes>.

The languages „German“ and „English“ cannot be deleted.

When starting the program you can select the installed language.



**Print templates**

The templates for the certificates are established in German and their test specifications are assigned to the test objects (torque wrenches).

If you want to use templates in a different language or with a different layout, you can modify the print templates or create new ones.

On the select list <Configuration> select < Templates>.

Click on the box <New>.

In the box <Name> you can assign a name to the new certificate template.

Confirm this entry by clicking on the box <OK>.

Mark the new name in the list of certificates by clicking on it and confirm by clicking on <Edit>.

Click on the bar on the bottom ① on the box <View>.

If you want to use the standard template, click on the icon „Open file “. ②

Select the template which you want to use (\*.rtf) in the directory C:\Programme\HAZETTorquetesting\template and open it by clicking on the box <Open> or by double-clicking.

There are three templates at your disposal:

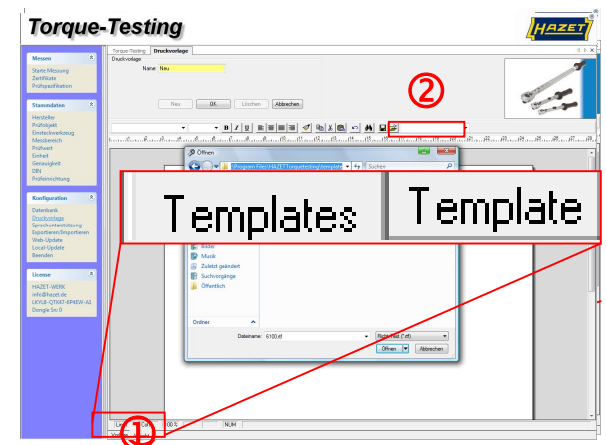
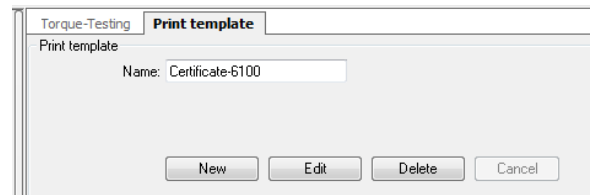
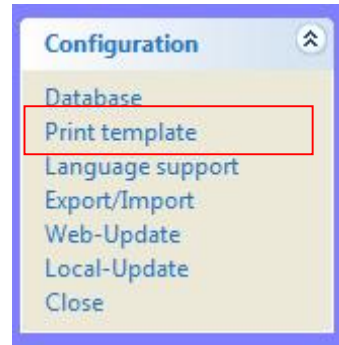
- 6100.rtf: Torque wrench **with graduation and firmly mounted drive side.**
- 6200.rtf: Torque wrench **with graduation and article test object.**
- 6300.rtf: Torque-wrench **without graduation with one preset value.**

Once the template is open, you can modify the terms which are not parenthesized (by dollar signs). For this purpose mark the term to be replaced (e.g. test object) and enter a new term.

Click on <OK> to confirm and to store the newly established template.

To be able to use the new template to establish new certificates, you have to assign them to the test specifications of the torque wrenches as described in **test specification** on page 18.

If you want to create a new, individual template for a certificate, use the tools supplied in delivery. The tool bar contains the common commands of the program Microsoft® Word®.



**Qualitätsprüfzertifikat**  
nach DIN 55350 – 18-4.2.2

|                                     |                              |
|-------------------------------------|------------------------------|
| <input checked="" type="checkbox"/> | <b>Prüfobjekt</b>            |
| <input checked="" type="checkbox"/> | \$ObjectArticleDescription\$ |
|                                     | <b>Hersteller</b>            |
|                                     | \$Manufacturer\$             |
|                                     | <b>Artikel Nr.</b>           |
|                                     | \$ObjectArticlenumber\$      |
|                                     | <b>Seriennummer</b>          |
|                                     | \$.SerialNumber\$            |

## Templates

You can create a certificate with your own pictures and logos. Pictures and logos can only be inserted if they are in bmp format. To add a picture or logo, use the **right mouse button** to select the command *<Insert picture>*. **Do not use the clipboard (copy/paste).**

By marking the picture you can change the size and position of the picture.

In order to insert tables, use the **right mouse button** to select the command *<Insert table>*.



To be able to display test results, you have to establish a measurement table. Use the scroll bar ① to select *<TAB Measurementtable\$>* and determine the number of lines and columns.

The measurement table must always be composed of at least two columns. The first column is a description of the values (e.g. numbering). The number of lines must correspond to the number of test values which are provided by the test specifications or standards.

**Note:** *If the number of lines does not correspond to the number of test values as indicated in the test specification, you will get an error message during printing. Please also see test specification on page 18.*

To change the column size of the tables, mark all the columns of the table. In the ruler at the top, there are little markers which you can displace.

Change table layout (colours/frame): Mark table *<Edit Table>*.

Delete lines: Mark lines, **right mouse button** *<Delete lines >*.

**Note:** *Only lines without contents can be deleted.*

Print windows: In the select list, select the required print window designations, e.g. *<Manufacturer \$>* by using the scroll bar ①.

Print windows can be deleted by double clicking.

Click on *<OK>* to confirm the entry and to save the established template.

To be able to use the new template for your certificates, you have to assign their test specification to the torque wrenches to be tested as described in **test specification** (page 18) or **bulk replace** (page 19).

## Master data

Master data is entered in order to establish new torque wrenches, which are not yet represented by the program, or applied to modify stored torque wrenches. The program contains all the master data of torque wrenches from the current HAZET range of products whose test values are in the range from 2 up to 1000 Nm.

### Master data / Manufacturers

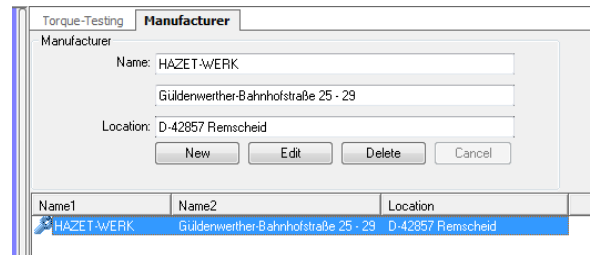
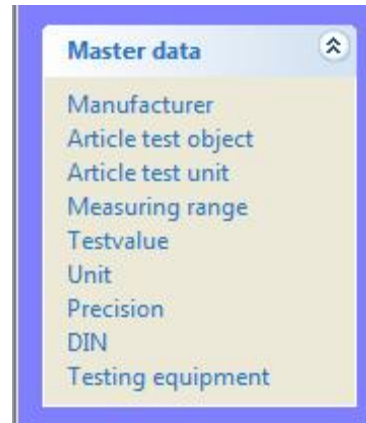
To establish a new manufacturer, select on the select list <Master data> <Manufacturer>.

By clicking on the box <New> you can enter another manufacturer. By clicking on the box <Edit> you can change the data of a registered manufacturer. The entry boxes are yellow.

**Note:** If you modify the data, the original data will get lost. Please consider if you need the manufacturer's data for future tests.

Confirm by clicking on <OK>.

**Note:** Mandatory fields left unfilled will be red once you clicked on the box <OK>.



### Master data / Test object

To enter the data of a new torque wrench, select on the select list <Master data> <Test object>.

By clicking on the box <New> the data of a new torque wrench can be entered. By clicking on the box <Edit> the data of a registered torque wrench can be modified. The entry boxes are yellow.

**Note:** If you modify the data, the original data will get lost. Please consider if you need the data of this torque wrench for future tests.

In the box <Number> you can enter either the type designation or the article number and in the box <Description> you can enter a designation of the tool to be tested, e.g. a torque wrench.

Confirm by clicking on <OK>.

**Note:** Mandatory fields left unfilled, will be red once the entry was confirmed by clicking on <OK>.

**Note:** The test values of a new torque wrench must be in the measuring range of the torque tester to use.

### Master data / Article test units

To enter the data of a new article test unit, select on the select list <Master data> <Article test unit>.

By clicking on <New> you can enter the data of a new article test unit. By clicking on <Edit> the data of an article test unit will be changed. The entry boxes are yellow.

**Note:** *If you modify the data, the original data will get lost. Please consider if you need the data of this article test unit for future tests.*

In the box <Number> you can enter the type designation for the article number and in the box <Description> you can enter the designation for an article test unit.

By clicking on <OK> you will confirm the entry.

**Note:** *Mandatory fields left unfilled will be red once the entry was confirmed by clicking on <OK>.*

### Master data / Measuring range

If a new torque wrench was „created“, it can be necessary to establish a new measuring range. To create a new measuring range, select on the select list <Master data> <Measuring range>.

In the table the registered measuring ranges are displayed. If the measuring range of a new torque wrench has not yet been established, this range has to be „created“.

**Note:** *The test values of a new torque wrench must be in the measuring range of the torque tester to use.*

By clicking on <New> you can enter a new measuring range. By clicking on <Edit> an established measuring range can be modified. The entry boxes are yellow.

**Note:** *If you modify the data, the original data will get lost. Please consider if you need the data of this measuring range for future tests.*

Confirm by clicking on <OK>.

**Note:** *Mandatory fields left unfilled will be red once the entry was confirmed by clicking on <OK>.*

### Master data / Test value

If a new measuring range was created, it can be necessary to add new test values. To enter new test values, select on the select list <Master data> <Test value>.

In the table the registered test values are displayed. If the test value of a new torque wrench has not yet been registered, this value has to be added.

**Note:** *The test values of a new torque wrench have to be in the range of the torque tester to use.*

By clicking on <New> a new test value can be entered. Please follow the standards and test specifications being in effect.

According to DIN EN ISO 6789:2003 the test values have to be selected at 20%, 60% and 100% of the final value. By clicking on <Edit> the registered test value can be changed. The entry boxes are yellow.

**Note:** *If you modify the data, the original data will get lost. Please consider if you need the data of this test value for future tests.*

Confirm by clicking on <OK>.

**Note:** *Mandatory fields left unfilled will be red once the entry was confirmed by clicking on <OK>.*

### Master data / Unit

To create a new torque unit, select on the select list <Master data> <Torque unit>.

The registered torque units are displayed in the table.

If the torque unit of a new torque wrench is not yet registered, this unit has to be added to the list.

**Note:** *The electronic torque testers HAZET 7901 E, HAZET 7902 E and HAZET 7903 E transmit the following torque units: lbf.ft, lbf.in and Nm.*

By clicking on <New> another torque unit can be added. By clicking on <Edit> a registered torque unit can be changed. The entry boxes are yellow.

**Note:** *If you modify the data, the original data will get lost. Please consider if you need the data of this unit for future tests.*

Confirm by clicking on <OK>.

**Note:** *Mandatory fields left unfilled will be red once the entry was confirmed by clicking on <OK>.*



### Master data / Precision/Tolerance

To enter the data of a new precision/tolerance, please select on the select list <Master data> <Precision>.

In the table the registered precisions/tolerances are displayed in per cent (%). If the precision/tolerance of a new torque wrench is not registered, it has to be added to the list.

By clicking on <New> another tolerance can be added. By clicking on <Edit> a registered tolerance can be modified. The entry boxes are yellow.

**Note:** *If you modify the data, the original data will get lost. Please consider if you need this precision/tolerance for future tests.*

Confirm by clicking on <OK>.

**Note:** *Mandatory fields left unfilled will be red once the entry was confirmed by clicking on <OK>.*

### Master data / DIN

To create a new standard or your own test rules, select on the select list <Master data> <DIN>.

In the table the registered standards and test specifications are displayed. If the standard or test rule of a new torque wrench is not registered, this data has to be added to the list.

By clicking on <New> a new standard or test rule can be entered. By clicking on <Edit> a registered standard or test rule can be changed. The entry boxes are yellow.

**Note:** *if you modify the data, the original data will get lost. Please consider if you need the data of the standard for future tests.*

Confirm by clicking on <OK>.

**Note:** *Mandatory fields left unfilled will be red once the entry was confirmed by clicking on <OK>.*

## Test specifications

In test specifications the registered master data is assigned to a specific torque wrench.

On the select list select *<Measuring>* *<Test specifications>*.

By clicking on *<New>* a new test specification can be entered. By clicking on *<Edit>* a registered test specification can be modified. The entry boxes are yellow.

**Note:** *If you modify the data, the original data will get lost. Please consider if you need the data of this test specification for future tests.*

Select *<Manufacturer>* by using the scroll bar.

Select *<Article number>* by using the scroll bar.

If a torque wrench with an article test unit has to be tested, select *<Article test unit>* by using the scroll bar.

Select *<Precision>* by using the scroll bar.

Select *<Torque unit>* by using the scroll bar.

Select *<Measuring range>* by using the scroll bar.

Select *<Test specification>* by using the scroll bar.

**Note:** *The measurement range of the torque tester must be adapted for the test values of the torque range.*

Select *<Template>* by using the scroll bar.

The templates and certificates are established in German. There are three templates at your disposal according to the type of torque wrench.

6100: Torque wrench **with graduation and firmly mounted drive side.**

6200: Torque wrench **with graduation and article test unit.**

6300: Torque wrench **without graduation with one preset value.**

**Note:** *If certificates in a different language or with a different layout are required, see templates on page 12-13.*

Select *<DIN>* or test specification by using the scroll bar.

Select the number of *<Measurements>* according to the standard by using the scroll bar.

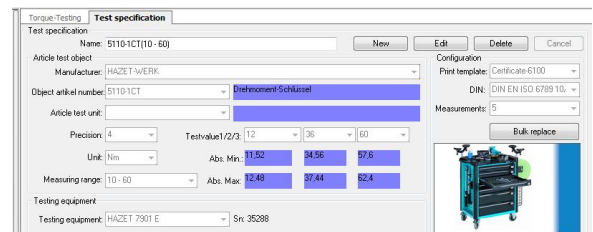
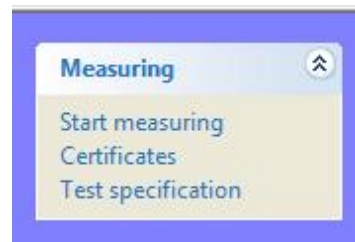
**Note:** *If the number of measurements does not correspond to the number of lines in the template, you will get an error message during printing.*

See also *Templates* page 12-13

Confirm by clicking on *<OK>*.

**Note:** *Mandatory fields left unfilled are red once the entry was confirmed by clicking on *<OK>*.*

The newly created torque wrench can now be tested as described in *"Start Measuring"*, page 7-9.



### Test specification

In the box <Bulk replace> the master data for DIN standards, testing equipment and templates for selected or for all test specifications can be replaced by modified or new master data. For this purpose you first have to host the master data or to create new master data (see pages 14-17).

Open the information box <Bulk replace>.

In the first line select what you want to replace by using the scroll bar: DIN, testing equipment or templates.

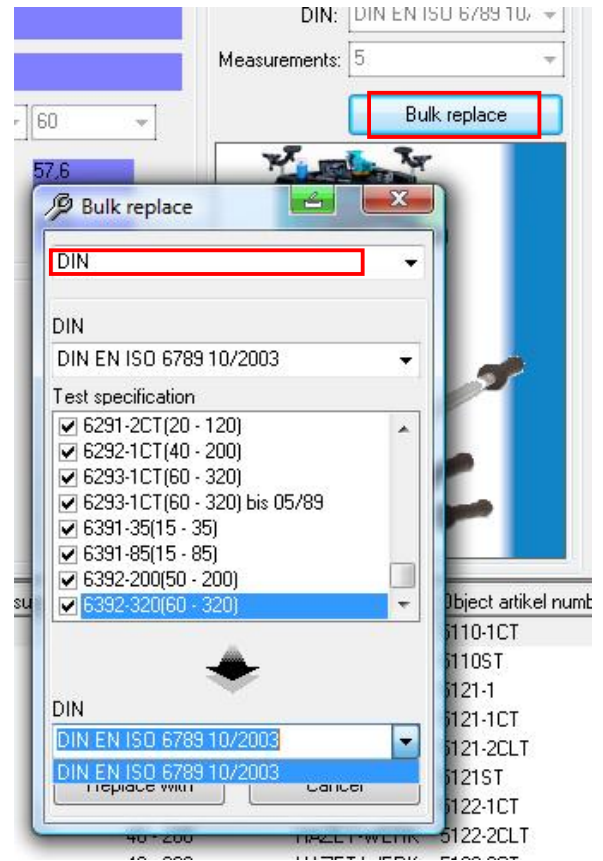
In the second line you can select the data you want to replace by using the scroll bar.

The test specifications which have a check mark will be changed or updated. If you remove the check mark from a test specification it will neither be changed nor updated.

In the last line select the new data which has to be added as test specification by using the scroll bar.

By clicking on <Replace> you will start the data exchange.

By clicking on <Yes> in the control box you have to confirm this procedure.



## Database

All the data is saved in a database. To „maintain“ the database, you can compress and save the data.

Select on the select list <Configuration> <Database>.

By default, all the data is saved „locally“ in the following directory:

<C:\Programme\HAZETTorquetesting\database\\*dbf>.

If you want to run the program with a SQL Server, please contact one of the consultants from HAZET (see page 24).

In <Data maintenance> there are two different kinds of maintenance: <Compact Database> and <Backup>.

If you delete data records, they will not be deleted from the database. This data still exists physically; it is just no longer displayed. To keep the data volume as small as possible and to avoid the slowing down of the data exchange, we recommend executing <Compact database> regularly.

When closing the program an automatic backup and compression of the database is already preinstalled by the check mark. The last 5 backups are stored. The number of backups etc. can be changed any time.

From a data size of 20 MB on, it is necessary to execute the backup and compression manually. For this purpose deactivate the option "Backup and compact database when closing".

We recommend making regular backups by clicking on <Backup>. The data will be saved in the following directory:

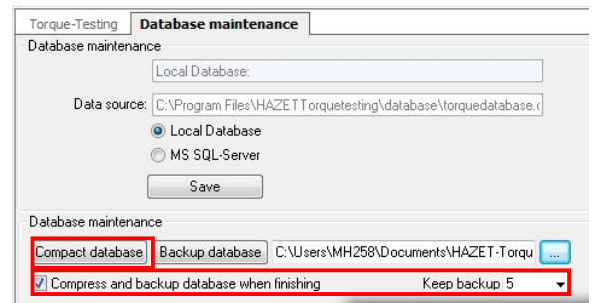
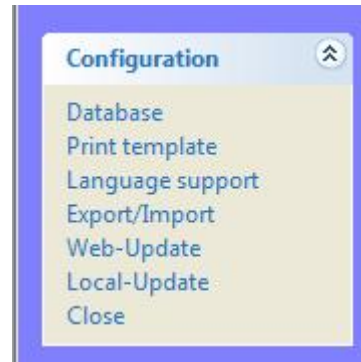
<HAZET-Torque-Testing\ddbbackup\torquedatabase\*.bak>.

You may also select a different path for the backups.

**Note:** We recommend using in addition an external data storage unit for the backups.

In case of problems with the database, you can copy the last backup <torquedatabase\*.bak> into the following directory:

<C:\HAZETTorquetesting\Database> and rename it <torquetesting.dbf >.



**Data import / export**


If you work on several computers with the HAZET Torque-Testing-Program, you can transfer the new master data and test specifications from one database to another by using the function <Export/Import> and make an update of the data. For this purpose the data has to be exported from one computer in order to import it to another computer.

Start the HAZET Torque-Testing-Program on the computer from which you want to export the data and select on the select list <Configuration> <Export/Import>.

In list „no. 2“, you will find the designations of the data of the database which you can export from this specific computer.

Mark the data which you want to export by putting a check mark.

- ArticlePE = Article test unit
- ArticlePO = Article test object
- DIN = DIN
- Manufacturer = Manufacturer
- MeasuringRangePO = Measuring range
- Precision = Precision
- TestingEquipment = Testing equipment
- TestSpecification = Test specification
- Testvalue = Test value
- Unit = Unit

Click on the symbol  >

The information box „Save in“ will be opened.

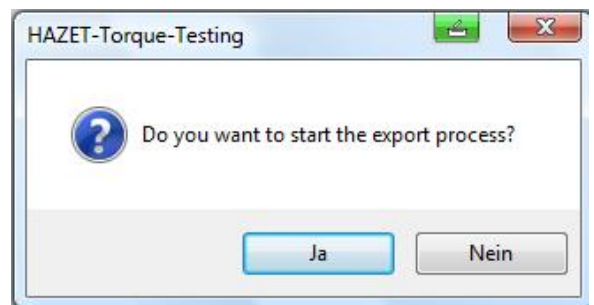
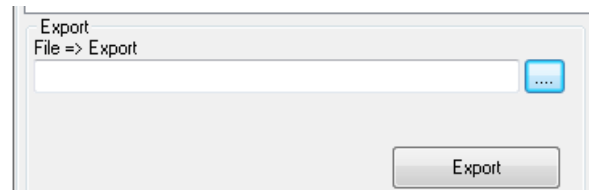
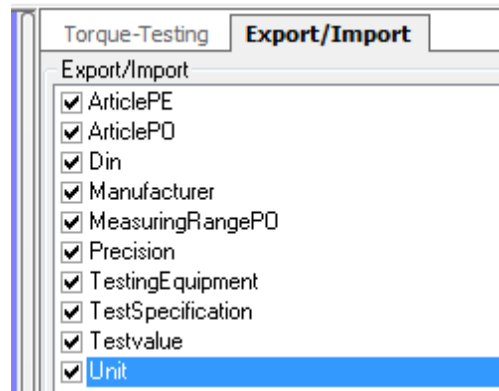
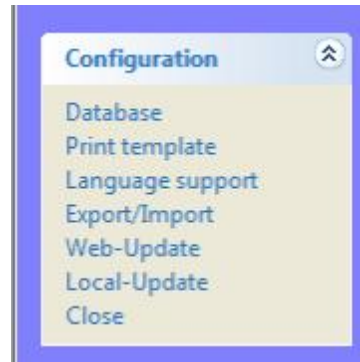
Select a location either a network drive or an external storage unit.

**Note:** The file name must always end on \*.trq.

Confirm the path by clicking on <Save>.

Check again the data to be exported and the path. Click on <Export>.

If everything is correct, start the data export by clicking on <Yes>.



## Data import

Start the HAZET Torque-Testing-Program on the computer on which you want to import the data and select on the select list <Configuration> <Export/Import>.

In case of <Import> only new data is transferred to the database. The existing data remains unchanged. To import the data click on the symbol <img alt="Import icon" data-bbox="340 188 375 205"/>.

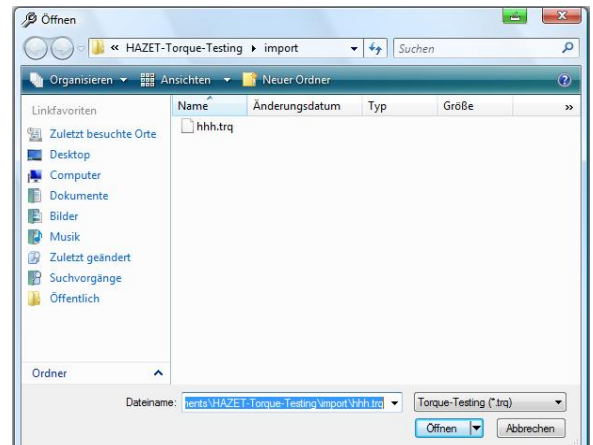
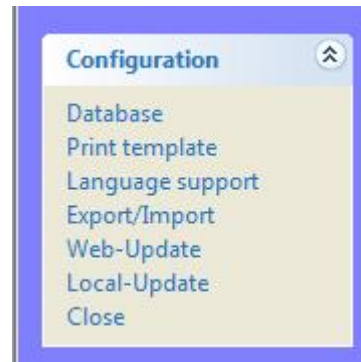
The dialog box <Open> will be opened.

Enter the path or location from which you want to import the data directly in the line <Filename> or select a path by using the scroll bar. By clicking on <Open> the path is transferred in the box <File => Import>.

Check again the path/location for the import of the data and click on <Import>.

If everything is correct, start the data import by clicking on <Yes>.

Once the import is finished, stop the HAZET Torque-Testing-Program. After a reboot the imported data records will be available.



## Update of the program

The whole program will be updated by an update.

If available, HAZET will inform you about an updated version of the program.

There are two possibilities for starting an „Update“:

<Web-Update> and <Local-Update>.

A <Web-Update> is only possible if the computer has internet access. To download a new version from a HAZET Server, click in Configuration on <Web-Update> and follow the instructions on the desktop.

If there are problems during the update, this could be due to the local or company's firewall. Please contact your system administrator.

If you do not have internet access, you can download the file onto a computer which has internet access by using the following address:

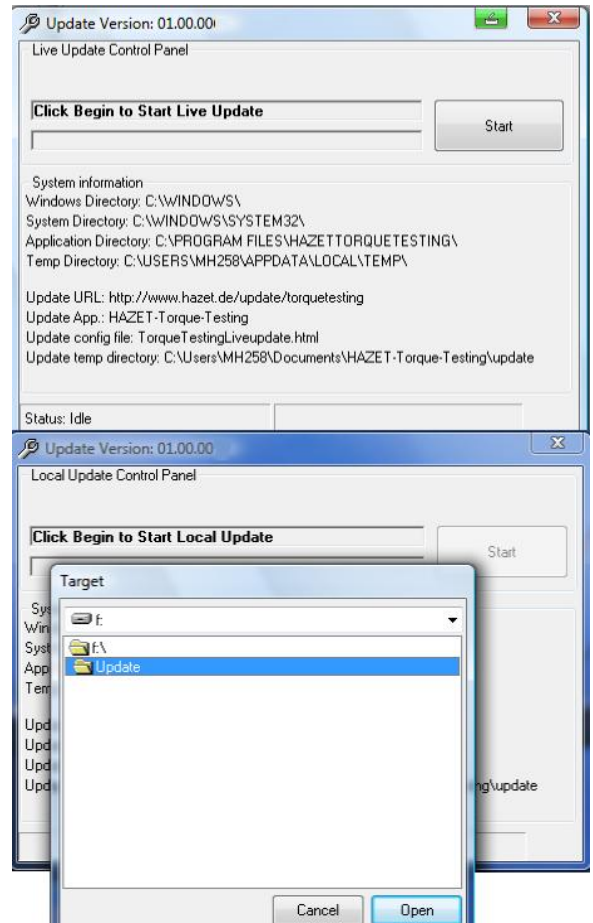
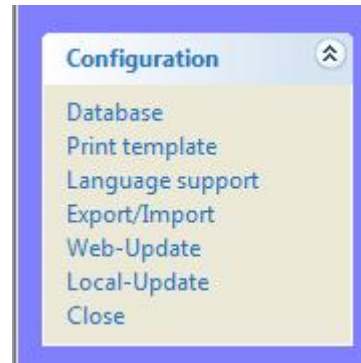
<http://www.hazet.de/de/download-service/download.html>

Install a folder on the network drive or on an external memory medium, (e.g. „Update“) on which you save the file to be downloaded.

Start the HAZET Torque-Testing-Program on the computer on which you want to make the program update and select on the select list <Configuration> <Local-Update>.

You will see the dialog box <Target> where you can select the path of the downloaded file by using the scroll bar. By clicking on <Open> the update will be loaded.

During the update the program is closed. Once the update is finished, you can start the program again.



**Hotline / Contact**

This program has been developed and tested according to our high quality standards.

In case of questions, suggestions for improvements etc., please contact us. The following contact persons will be at your disposal.

**Contact (Germany):**

**Bernhard Socha**

Telefon: +49 (0) 21 91 / 7 92-333  
Telefax: +49 (0) 21 91 / 7 92-200  
E-Mail: [bernhard.socha@hazet.de](mailto:bernhard.socha@hazet.de)

**Uwe Remmers**

Telefon: +49 (0) 21 91 / 7 92-333  
Telefax: +49 (0) 21 91 / 7 92-200  
E-Mail: [uwe.remmers@hazet.de](mailto:uwe.remmers@hazet.de)

**Contact (international)**

**Peter Reim**

Telefon: +49 (0) 21 91 / 7 92-219  
Telefax: +49 (0) 21 91 / 7 92-200  
E-Mail: [peter.reim@hazet.de](mailto:peter.reim@hazet.de)

