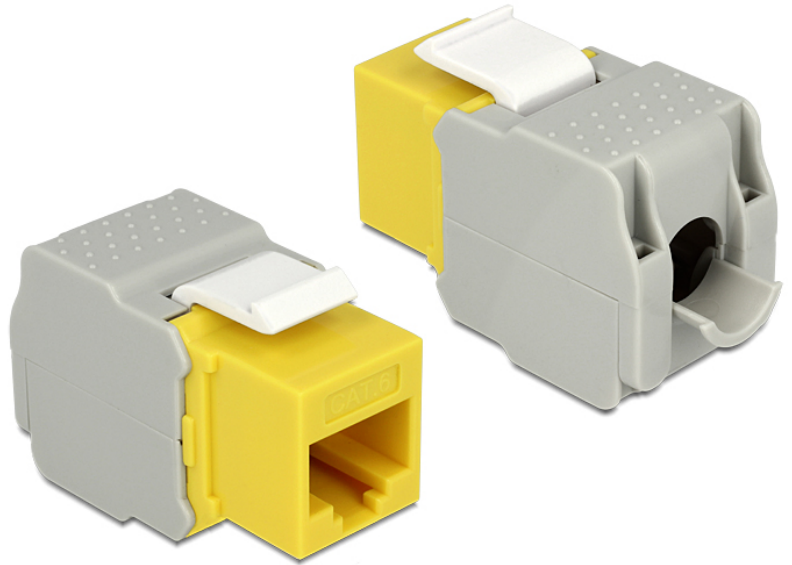


Delock Keystone Module RJ45 female > LSA Cat.6 UTP yellow

Description

This module by Delock can be used to connect twisted pair cable to an RJ45 female port. With its standardised dimensions it can be used for easy snap-in mounting in e. g. a Keystone patchpanel, face plate or surface-mount box.



Specification

- Connector: RJ45 female (8P/8C) > LSA (toolless)
- Unshielded (Cat.6)
- Compliant with Cat.6 requirements of ISO/IEC 11801 Edition 2.2, EN 50173-1:2011 and EN 60603-7-4, and ANSI/TIA 568-C.2
- For Keystone ports with 19.2 x 14.9 mm
- Dimensions (LxWxH): ca. 41 x 24.5 x 18.1 mm

Item No. 86345



EAN 4043619863457

Country of origin China

Package content

- Keystone module
- Cover
- Zip-tie

Package

- Poly bag

Images

