

# D-Sub PCB angled Euro Standard

Female Connectors with Threaded Bolt  
UNC 4/40



RoHS  
COMPLIANT

### SPECIFICATION:

Current rating: 1.5 A  
Insulation resistance: 1000 MΩ min.  
Contact resistance: 20 mΩ max.  
Dielectric voltage: 500 V AC  
Operation temperature: -40 °C to +105 °C

### MATERIAL:

Insulator: PBT black UL94V-0  
Shell: Steel  
Pins: Copper alloy

### FINISH:

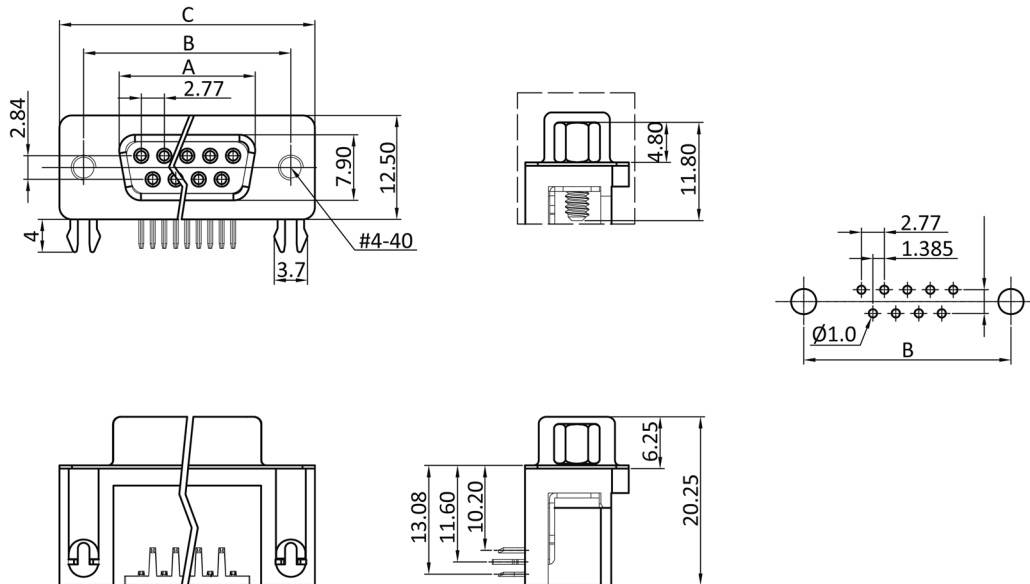
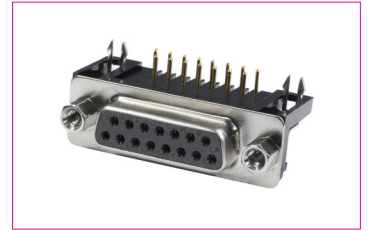
Contacts: Selective gold flash  
Shell: Nickel plated

### HANDLING:

Processing: Wave soldering  
Packing: Tray

### TOLERANCE:

.X ± 0.30  
.XX ± 0.20



### Dimensions

No. of contacts:	A:	B:	C:
9	16.33	24.99	30.80
15	24.66	33.32	39.14
25	38.38	47.04	53.04
37	54.84	63.50	69.32

### Order-Information

Identifier:	No. of contacts:	Version:	Special:	Mounting:
BU	#	WB	/ 9	#
D-Sub Female with Solder Pins	9: 9 pin 15: 15 pin 25: 25 pin 37: 37 pin	WB: angled	9: Euro standard	empy: with threaded bolts