

Mini-DIN Sockets

PCB, shielded



RoHS
COMPLIANT

SPECIFICATION:

Current rating: 1 A
 Voltage rating: 30 V DC
 Insulation resistance: 1000 MΩ min.
 Contact resistance: 30 mΩ max.
 Dielectric voltage: 500 V AC
 Operation temperature: -40 °C to +105 °C

MATERIAL:

Housing: PBT UL94V-0
 Contacts: Copper alloy
 Solder pins: Copper alloy
 Shield: Metal

FINISH:

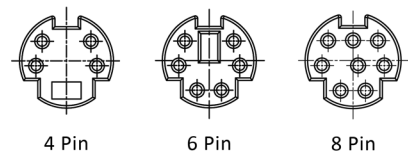
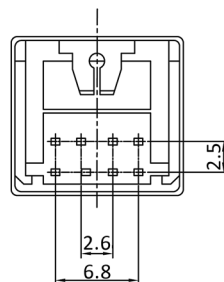
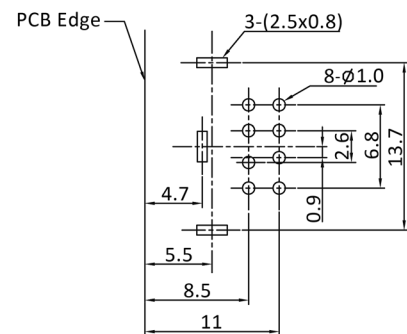
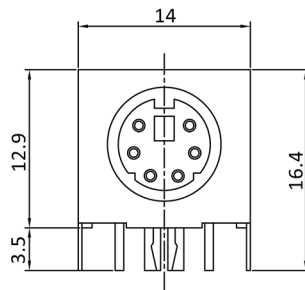
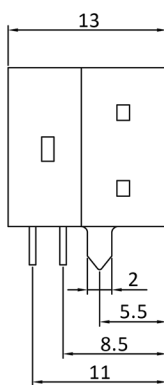
Contacts: Gold Flash
 Solder pins: Tin plated
 Shield: Nickel plated

HANDLING:

Processing: Wave soldering
 Packing: Tray

TOLERANCE:

.X ± 0.38
 .XX ± 0.25



Order-Information

Identifier:	No. of contacts:	Version:
MDIOB	#	G
Mini DIN chassis socket angled, PCB mount	4: 4 pin	G: Shielded
	6: 6 pin	
	8: 8 pin	