

D-Sub High Density, PCB

Male Connectors



**RoHS
COMPLIANT**

SPECIFICATION:

Current rating: 3 A
 Insulation resistance: 1000 MΩ min.
 Contact resistance: 25 mΩ max.
 Dielectric voltage: 500 V AC
 Operation temperature: -55 °C to +105 °C

MATERIAL:

Insulator: PBT white UL94V-0
 Shell: Steel
 Pins: Copper alloy

FINISH:

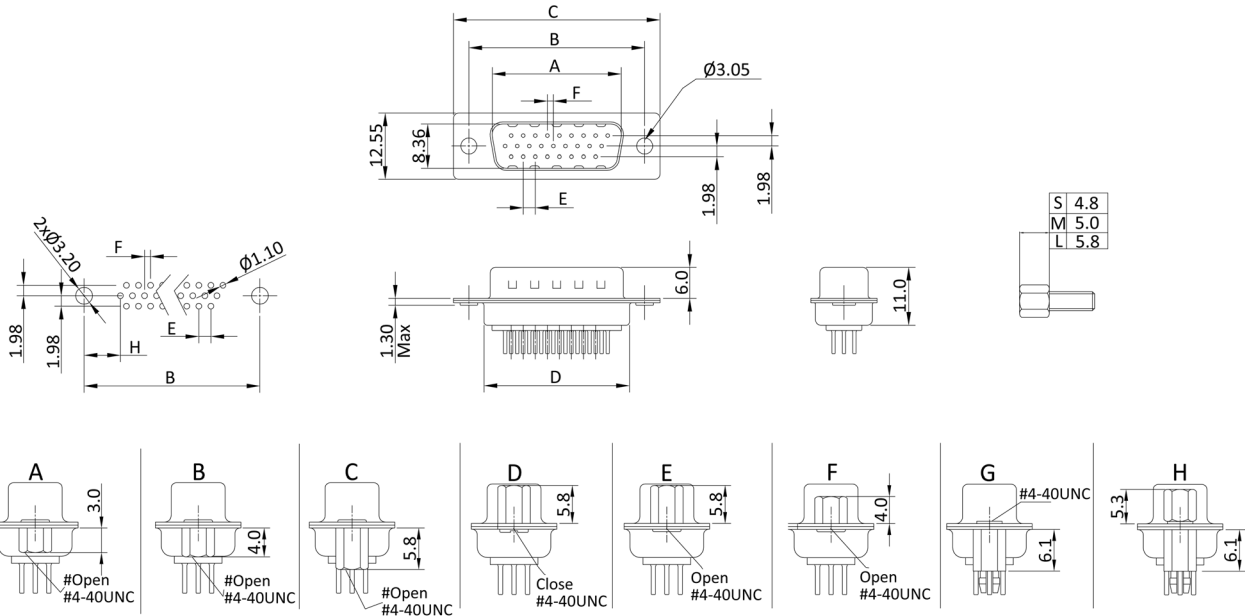
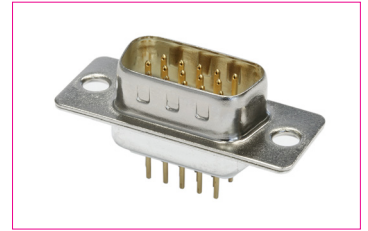
Front shell: Nickel plated
 Rear shell: Tin plated
 Contacts: Gold Flash

HANDLING:

Processing: Wave soldering
 Packing: Tray

TOLERANCE:

.X ± 0.30
 .XX ± 0.25



Dimensions

No. of contacts:	A:	B:	C:	D:	E:	F:	H:
15	16.92	24.99	30.81	19.23	2.29	1.145	7.04
26	25.25	33.32	39.14	27.56	2.29	1.145	6.88
44	38.96	47.04	53.04	41.28	2.29	1.145	6.88
62	55.42	63.50	69.32	57.33	2.41	1.205	7.00

Order-Information

Identifier:	No. of contacts:	Version:	Mounting:	Screw Length:
ST	#	HDP	#	#
D-Sub High Density Male with Solder Pins	15: 15 pin * 26: 26 pin 44: 44 pin 62: 62 pin	HDP: High Density DIP	empty: w/o Accessories * A: After-Screw H=3.0 B: After-Screw H=4.0 C: After-Screw H=5.8 D: Before-Screw H=5.8 E: Coalescent Nut H=5.8 F: Before-Screw H=4.0 G: After-Screw H=6.1 H: After-Screw H=6.1 / Before-Screw H=5.3	empty: w/o screw * S: 4.8 M: 5.0 L: 5.8

* = standard