

SPECIFICATION:

Current rating: 0.5 A
 Voltage rating: 30 V
 Insulation resistance: 1000 MΩ min.
 Contact resistance: 20 mΩ max.
 Dielectric voltage: 500 V AC
 Operation temperature: -20 °C to +105 °C

MECHANICAL:

Insertion force: ≤ 0.8 kgf/pin
 Extraction force: ≥ 1 kgf/pin (6-20 pin), 2kgf/pin (21-40 pin)
 Operating life: 200 cycles

MATERIAL:

Housing: Thermoplastic UL94V-0
 Contacts: Copper alloy

FINISH:

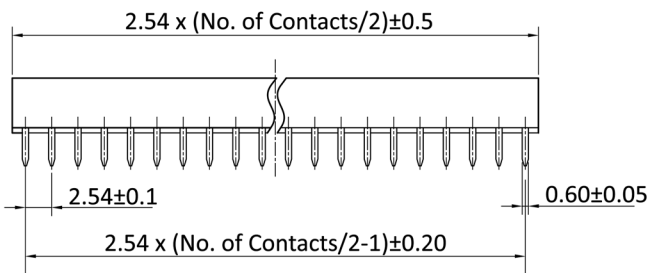
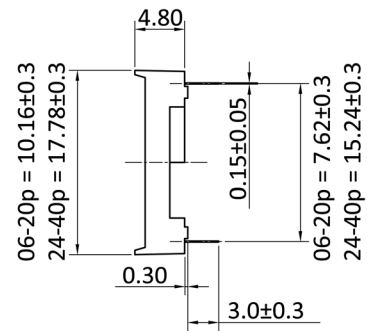
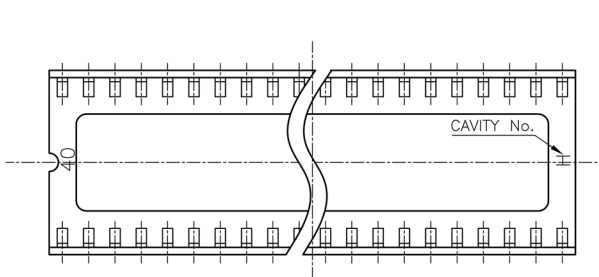
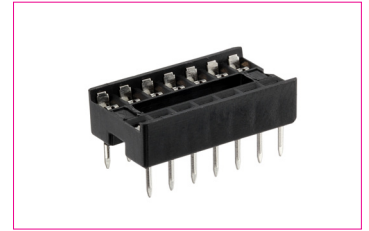
Contacts: Tin plated

HANDLING:

Processing: Wave soldering
 Packing: Tube

TOLERANCE:

.X ± 0.38
 .XX ± 0.25



Order-Information

| Identifier: | No. of contacts: | DIP Spacing: |
|-----------------------------|---|--|
| ICFG | # | # |
| IC Socket with stamped pins | 6: 2 x 3 8: 2 x 4 14: 2 x 7 16: 2 x 8 18: 2 x 9 20: 2 x 10 24: 2 x 12 28: 2 x 14 32: 2 x 16 40: 2 x 20 | empty: 6 - 20 pin = 7.62 mm / 24 - 40 pin = 15.24 mm 7: 24 + 28 pin = 7.62 mm |