

**SPECIFICATION:**

Current rating: 0.5 A  
 Voltage rating: 30 V  
 Insulation resistance: 1000 MΩ min.  
 Contact resistance: 20 mΩ max.  
 Dielectric voltage: 500 V AC  
 Operation temperature: -20 °C to +105 °C

**MECHANICAL:**

Insertion force: ≤ 0.8 kgf/pin  
 Extraction force: ≥ 1 kgf/pin (6-20 pin), 2kgf/pin (21-40 pin)  
 Operating life: 200 cycles

**MATERIAL:**

Housing: Thermoplastic UL94V-0  
 Contacts: Copper alloy

**FINISH:**

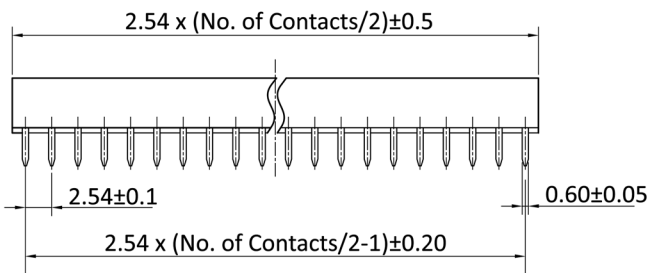
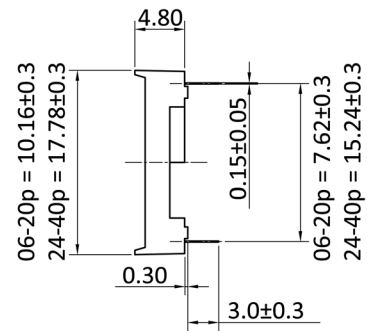
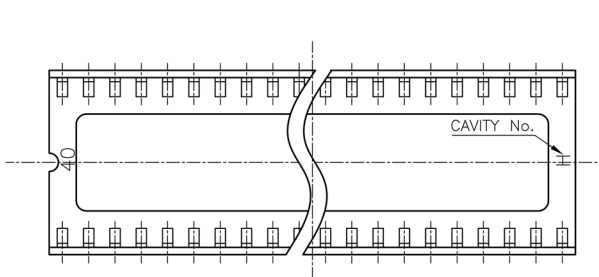
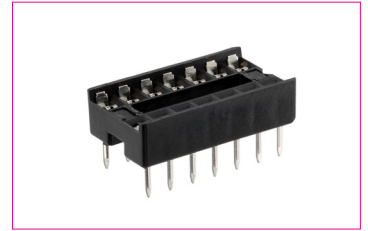
Contacts: Tin plated

**HANDLING:**

Processing: Wave soldering  
 Packing: Tube

**TOLERANCE:**

.X ± 0.38  
 .XX ± 0.25



**Order-Information**

Identifier:	No. of contacts:	DIP Spacing:
ICFG	#	#
IC Socket with stamped pins	6: 2 x 3 8: 2 x 4 14: 2 x 7 16: 2 x 8 18: 2 x 9 20: 2 x 10 24: 2 x 12 28: 2 x 14 32: 2 x 16 40: 2 x 20	empty: 6 - 20 pin = 7.62 mm / 24 - 40 pin = 15.24 mm 7: 24 + 28 pin = 7.62 mm