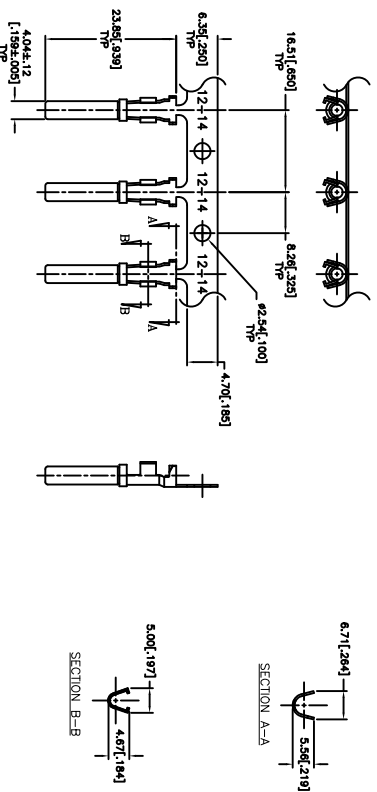
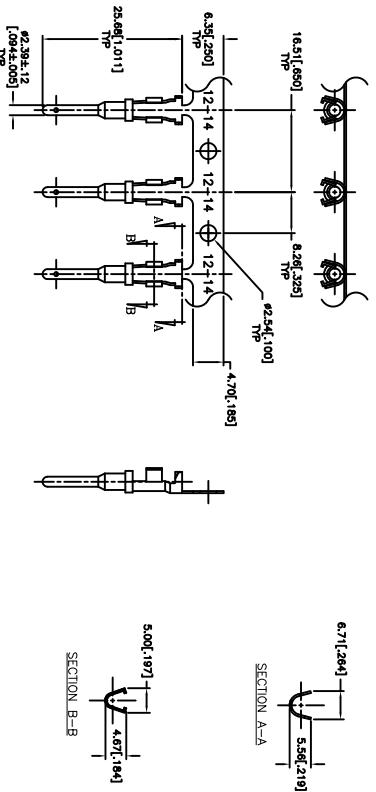


ATP-SERIES STAMPED AND FORMED CONTACTS

PART NUMBER: AT62-12-01XX
DESCRIPTION: CONTACT, SOCKET, STAMPED, SIZE 12
MATERIAL:
CONTACT BODY: COPPER ALLOY
HOOD: STAINLESS STEEL
PLATING SUFFIX CODE:
 XX=66 NICKEL PLATING
 XX=44 GOLD PLATING
CONTACT GENERAL DATA SPECIFICATION: S2-15242
AVAILABLE CRIMPERS: ATT-12-00, MFX-3973
CRIMP SPECIFICATIONS: S2-15240 & S2-15241
CRIMP INFORMATION DRAWING: S2-15239
CONTACTS PER REEL: APPROX. 4000 (PARTIAL REELS AVAILABLE)

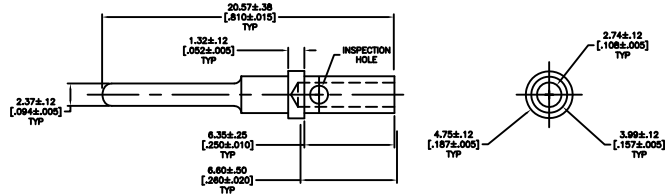


PART NUMBER: AT60-12-01XX
DESCRIPTION: CONTACT, PIN, STAMPED, SIZE 12
MATERIAL: COPPER ALLOY
PLATING SUFFIX CODE:
 XX=66 NICKEL PLATING
 XX=44 GOLD PLATING
CONTACT GENERAL DATA SPECIFICATION: S2-15242
AVAILABLE CRIMPERS: ATT-12-00, MFX-3973
CRIMP SPECIFICATIONS: S2-15240 & S2-15241
CRIMP INFORMATION DRAWING: S2-15239
CONTACTS PER REEL: APPROX. 4000 (PARTIAL REELS AVAILABLE)

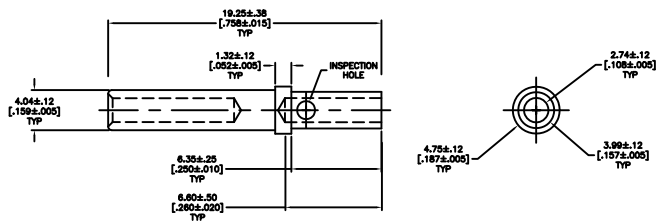


ATP-SERIES SOLID/MACHINED CONTACTS

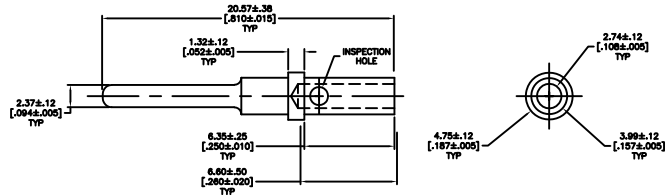
PART NUMBER: AT60-204-12141
 DESCRIPTION: CONTACT, PIN, SOLID MACHINED, SIZE 12
 MATERIAL: COPPER ALLOY
 PLATING: NICKEL
 CONTACT GENERAL DATA SPECIFICATION: S2-15242
 AVAILABLE CRIMPERS: CA-5D12 & CA-5E12
 CRIMPER SPECIFICATIONS: S2-15219 & S2-15220
 CRIMP INFORMATION DRAWING: S2-15238



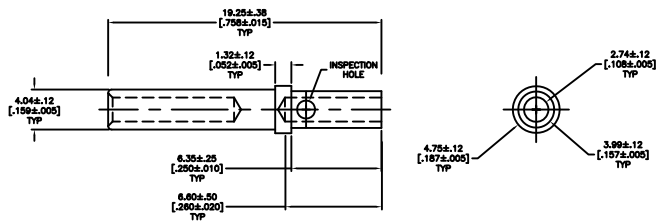
PART NUMBER: AT62-203-12141
 DESCRIPTION: CONTACT, SOCKET, SOLID MACHINED, SIZE 12
 MATERIAL:
 CONTACT BODY: COPPER ALLOY
 HOOD: STAINLESS STEEL
 PLATING: NICKEL
 CONTACT GENERAL DATA SPECIFICATION: S2-15242
 AVAILABLE CRIMPERS: CA-5D12 & CA-5E12
 CRIMPER SPECIFICATIONS: S2-15219 & S2-15220
 CRIMP INFORMATION DRAWING: S2-15238



PART NUMBER: AT60-220-1231
 DESCRIPTION: CONTACT, PIN, SOLID MACHINED, SIZE 12
 MATERIAL: COPPER ALLOY
 PLATING: GOLD
 CONTACT GENERAL DATA SPECIFICATION: S2-15242
 AVAILABLE CRIMPERS: CA-5D12 & CA-5E12
 CRIMPER SPECIFICATIONS: S2-15219 & S2-15220
 CRIMP INFORMATION DRAWING: S2-15238

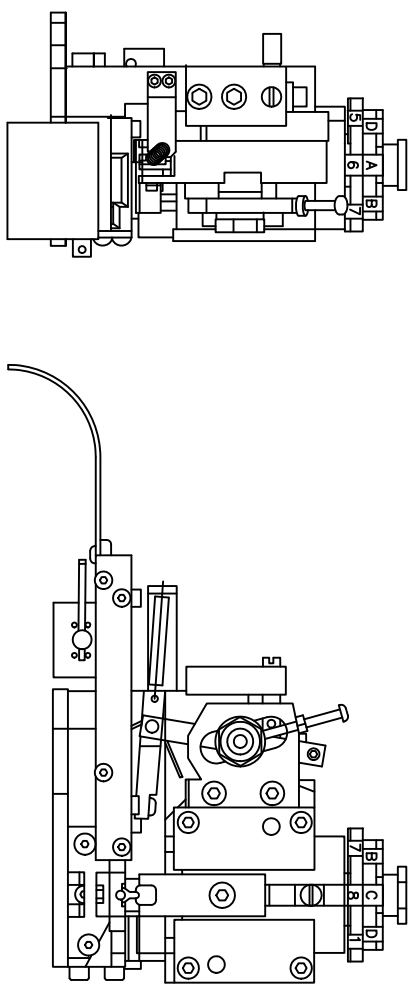


PART NUMBER: AT62-210-1231
 DESCRIPTION: CONTACT, SOCKET, SOLID MACHINED, SIZE 12
 MATERIAL:
 CONTACT BODY: COPPER ALLOY
 HOOD: STAINLESS STEEL
 PLATING: GOLD
 CONTACT GENERAL DATA SPECIFICATION: S2-15242
 AVAILABLE CRIMPERS: CA-5D12 & CA-5E12
 CRIMPER SPECIFICATIONS: S2-15219 & S2-15220
 CRIMP INFORMATION DRAWING: S2-15238



REVISIONS						
REV	ZONE	ECO	DESCRIPTION	DATE	BY	APPR
AT	-	-	RELEASE	1/16/13	KMM	RFK

SINE PART NUMBER	MFX-3973
DEUTSCH PART NUMBER	DCT12-02-00



ALL REFERENCES TO DEUTSCH PRODUCTS OR SPECIFICATIONS ARE FOR COMPARISON PURPOSES ONLY, AND REFER TO DEUTSCH INDUSTRIAL PRODUCTS.

QUANTITY	PART NUMBER	DESCRIPTION	ITEM
MATERIALS LIST			
UNLESS OTHERWISE SPECIFIED			
1) All dimensions are in inches.			
2) R. DEC 30.00 1/16			
3) R. DEC 30.00 1/16			
4) R. DEC 30.00 1/16			
5) Fabrication Standard Per: A			
6) Part: SS-20020			
7) Material Specifications:			
M/A			
PROCESS SPECIFICATIONS:			
M/A			
NEXT ASSY:			
SIGNATURES		DATE	
DRAWN: KMM	1/16/13		
CHECKED: KMM	1/16/13		
ENGINEER: KMM			
APPROVAL: R. CURRY	1/16/13		
CUSTOMER:		THE USE OF THIS DRAWING IS	
M/A		SPECIFICATIONS, AND PERFORMANCE	
		PROPERTY OF AMPHENOL CORP. ALL	
		DIMENSIONS ARE SUBJECT TO NORMAL	
		DOCUMENTS RETAINED HEREON MAY	
		CONTAIN UNLIT RIGHTS DATA.	
SIZE: P/304 N/10/100 W/6		SCALE: NONE	
C 10K/44		S2-15241	
ATP CRIMPER INFORMATION		MFX-3973	
MFX-3973		SHEET 6 OF 7	
REVISION		A1	

NOTE:
IT IS RECOMMENDED TO USE A CONTACT LUBRICATION SYSTEM TO PROMOTE EXTENDED DIE LIFE AND PROPER CONTACT CRIMPING.
UNIVERSAL OILER: P/N 354550-3
TERMINAL LUBRICANT: STONER P/N E807

REVISIONS				
REV	ECO	DESCRIPTION	DATE	BY
A1	-	RELEASE	1/16/13	KMM

USE CRIMPER NUMBER:
ATT-12-00 WITH CAVITY A & B

CONTACT P/N:	INSULATION ϕ	CAVITY	WIRE SIZE
AT60-12-0166 AT62-12-0166	PIN SOC .113 - .156 [2.87 - 3.96]	A	2.0mm ² 14 AWG 2.5mm ² 3.0mm ²
AT60-12-0144 AT62-12-0144	PIN SOC .145 - .176 [3.68 - 4.47]	B	12 AWG 4.0mm ²

GRAPHIC REPRESENTATION OF
HAND CRIMP TOOL T.B.D.

ALL REFERENCES TO DEUTSCH PRODUCTS OR SPECIFICATIONS
ARE FOR COMPARISON PURPOSES ONLY, AND REFER TO
DEUTSCH INDUSTRIAL PRODUCTS.

- NOTES (UNLESS OTHERWISE SPECIFIED):
- ALL DIMENSIONS IN INCHES [MILLIMETERS]
 - PLATING CODES = "0166"-NICKEL; "0144"-GOLD
 - THIS TOOL IS FOR CRIMPING SIZE 12 CONTACTS ONLY TO WIRES LISTED IN THE CHARTS.
 - DEUTSCH IPD CROSS REFERENCE PART NUMBER IS DTT-12-00.

QUANTITY	PART NUMBER	DESCRIPTION	ITEM
		MATERIALS LIST	
<p>UNLESS OTHERWISE SPECIFIED</p> <p>1) All dimensions are in inches.</p> <p>2) Tolerances are as follows:</p> <p>3) Ft. DEC 3000 Fractional ±1/64 3) Ft. DEC 3000 Decimal ±.0005 3) Fractional ±.0005 3) Decimal ±.0005</p> <p>4) Hole Reference = Δ</p> <p>UNLESS OTHERWISE SPECIFIED: <input type="checkbox"/> U</p> <p>UNLESS OTHERWISE SPECIFIED: <input type="checkbox"/> N/A</p> <p>PROCESS SPECIFICATIONS</p> <p>NOTE: ALL DIMENSIONS ARE TO BE TAKEN FROM THE UNMOUNTED DESIGN FEATURES. THE DATA SHOWN HEREON ARE THE PROPERTY OF AMPHENOL CORP. ALL DIMENSIONS ARE TO BE TAKEN FROM THE UNMOUNTED DESIGN FEATURES. DOCUMENTS REFERENCED HEREON HAVE BEEN REVIEWED AND APPROVED BY AMPHENOL CORP. ENGINEERING DEPARTMENT.</p>			
		<p>SIGNATURES</p> <p>DESIGNED: KMM DATE: 1/16/13</p> <p>CHECKED: KMM DATE: 1/16/13</p> <p>ENGINEER: KMM</p> <p>APPROVAL: R. CURRY 1/16/13</p> <p>CUSTOMER:</p>	
		<p>SIZE PCD NO/DWG NO:</p> <p>B 16K44 S2-15240</p> <p>SCALE NONE S2-15240 SHEET 5 OF 7</p>	

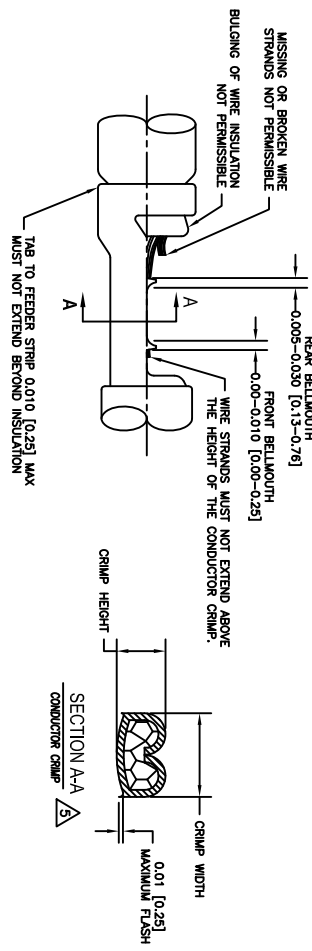
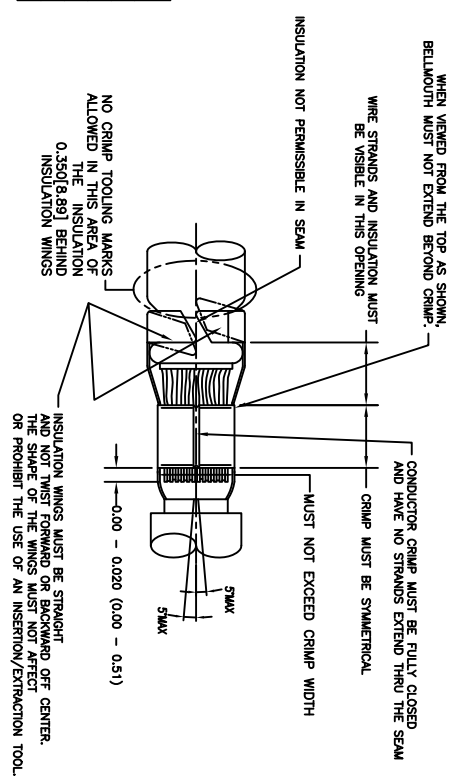
REV ZONE		ECO		RELEASE		REVISIONS	
AT	-	-	-	RELEASE	DATE	BY	APPR
					1/16/13	KMM	REC
DESCRIPTION							

DEUTSCH PART NUMBER	CONDUCTOR WIRE SIZE	CRIMP HEIGHT	CRIMP WIDTH	CONDUCTOR PUNCH NUMBER	CONDUCTOR ANVIL NUMBER	CRIMP TENSILE REFERENCE
AT160-12-0114	12 AWG	0.288 [2.24]	.125 [3.18]	AT17-008-0200	AT17-108-0200	70 [311]
AT162-12-0114	14 AWG	0.270 [1.78]				
AT160-12-0144	2.0mm ²	0.270 [1.78]				
AT162-12-0144	2.5mm ²	0.274 [1.88]				
AT160-12-0166	3.0mm ²	0.280 [2.03]				
AT162-12-0166	3.5mm ²	0.288 [2.31]				
AT160-12-0188	4.0mm ²	0.288 [2.24]				

INSULATION DIAMETER RANGE	INSULATION PUNCH NUMBER	INSULATION ANVIL NUMBER
0.151 - 0.176 [3.84 - 4.47]	AT17-219-0200	AT17-319-0200
0.130 - 0.154 [3.30 - 3.91]	AT17-222-0200	AT17-322-0200
0.113 - 0.135 [2.87 - 3.43]	AT17-234-0200	AT17-334-0200

SINE PART NUMBER	DEUTSCH PART NUMBER
MFX-3873	DC112-02-00
AT60-12-0166	1060-12-0122
AT62-12-0166	1062-12-0122
AT60-12-0144	1060-12-0144
AT62-12-0144	1062-12-0144

CROSS REFERENCE



NOTES: UNLESS OTHERWISE SPECIFIED

1. ALL DIMENSIONS ARE IN INCHES(mm).
2. FORCES ARE IN POUNDS(LBS) AND NEWTONS(N).
3. "X"= PLATING SUFFX. SEE INDIVIDUAL CONTACT DRAWING.
4. WIRE STRIP LENGTH: 0.250±0.025(6.35±0.64). BROKEN OR MISSING CONDUCTOR STRANDS ARE NOT ACCEPTABLE.
5. USE A BLADE MICROMETER (0.001[2.54] MIN SPINDLE AND 0.060[0.010][1.50][0.040] ANVIL) TO MEASURE THE CONDUCTOR CRIMP. SEE SECTION AA.
6. CRIMP TENSILE STRENGTH IS DETERMINED AT A PULL RATE SPEED OF 1.00 INCH(25.4) PER MINUTE. INSULATION WINGS ARE REMOVED FOR TEST. ACTUAL CRIMP TENSILE STRENGTH DEPENDS ON WIRE/CONDUCTOR SIZE. VALUES ON THIS SPECIFICATION ARE FOR REFERENCE ONLY.
7. INSULATION DIAMETER RANGE IS DETERMINED BY CONNECTOR AND ITS WIRE SEAL SIZE. SEE CONNECTOR DRAWING FOR INSULATION RANGE.
8. INSULATION CRIMP DIAMETER SHOULD BE THE EQUAL OR LESS THAN THE DIAMETER OF THE WIRE INSULATION (HARD OR TEFION INSULATION MAY BE AN EXCEPTION). INSULATION CRIMP SHALL NOT AFFECT REMOVAL TOOL PERFORMANCE AND SHALL NOT DAMAGE CONNECTOR GROMMET SEAL.
9. CONDUCTOR TYPE ARE PER SAE J1128(AWG) AND ISO 6722(METRIC)
10. FOR CONTACT MATERIAL AND PERFORMANCE DATA, SEE DRAWING S2-15242.
11. REFER TO S2-15240 AND S2-15241 AND CROSS REFERENCE CHARTS FOR CRIMP TOOL DATA.

ALL REFERENCES TO DEUTSCH PRODUCTS OR SPECIFICATIONS ARE FOR COMPARISON PURPOSES ONLY, AND REFER TO DEUTSCH INDUSTRIAL PRODUCTS.

QUANTITY	PART NUMBER	MATERIALS LIST	DESCRIPTION	ITEM
UNLESS OTHERWISE SPECIFIED				
1) All dimensions are in inches.				
2) R. SEE 30.00 [7.62] POSITION 31/14				
3) R. SEE 30.00 [7.62] POSITION 31/14				
4) Revision Standard Per: U				
5) Part: S2-20020				
6) Date: 1/16/13				
7) APPROVAL: R. CURRY				
8) CUSTOMER: ATP				
9) THE USE OF THIS DRAWING IS SPECIFIC TO THE PART AND PERFORMANCE OF THE PART. ANY OTHER USE IS AT THE USER'S RISK. ALL DIMENSIONS ARE SUBJECT TO REMOVAL DOCUMENTS REFERENCED HEREON UNLESS OTHERWISE NOTED.				
PROCESS SPECIFICATIONS: N/A				
SIZE (FSCAL NOT DIM) S2-15239				
SCALE NONE C 10K44				
REVISION A1				

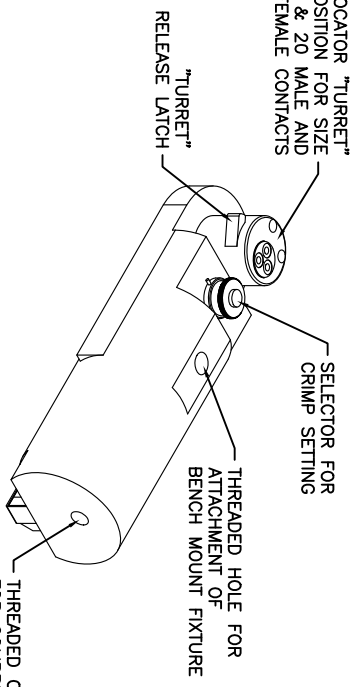
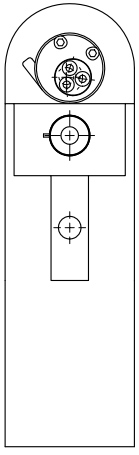
SIGNATURES	DATE
DRAWN: KMM	1/16/13
CHECKED: KMM	1/16/13
ENGINEER: KMM	
APPROVAL: R. CURRY	1/16/13

SINE Systems Corporation
 A Subsidiary of Amphenol Corporation
 44724 Moley Drive
 Clinton Township, MI 48036

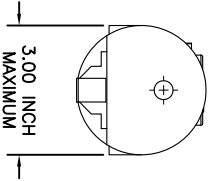
ATP CRIMP DATA, STAMPED CONTACTS FOR CRIMPER MFX-3973

REV ZONE		ECO	DESCRIPTION	DATE	BY	APPR
AI	-	-	RELEASE NUMBER 016571	6/12/09	B.D.B.	M.R.F.

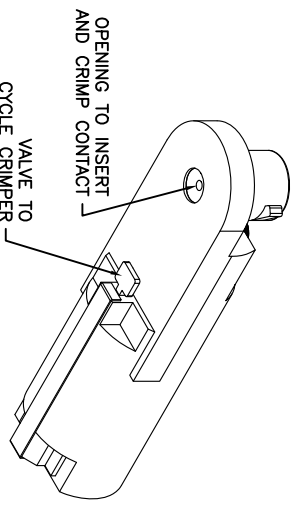
CONTACT LOCATOR "TURRET"
THREE POSITION FOR SIZE
12, 16 & 20 MALE AND
FEMALE CONTACTS



THREADED OPENING
FOR COMPRESSED
AIR FITTING



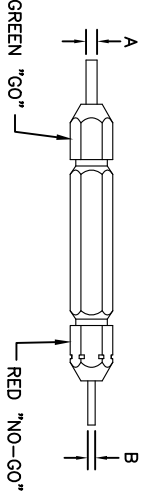
- NOTES:
1. THE CA-5E12 IS A COMPRESSED AIR OPERATED HAND CRIMPER FOR ELECTRICAL CONTACTS. IT IS ADJUSTABLE TO 3 CONTACT SIZES (12, 16 & 20) AND 8 INDENTER CRIMP POSITIONS FOR DIFFERENT WIRE SIZES (12AWG THRU 26 AWG).
 2. 80-120 PSI COMPRESSED AIR.
 3. WEIGHT: 3.1 LBS
 4. SELECTING CONTACT SIZE: PRESS THE RELEASE LATCH ON SIDE OF THE CONTACT LOCATOR "TURRET". ROTATE TO THE DESIRED CONTACT SIZE. THE TOP OF THE "TURRET" IS EMBOSSED WITH THE CONTACT SIZES.
 5. SELECTING WIRE SIZE: GRASP THE SELECTOR AND ROTATE TO THE DESIRED NUMBER.



GAGE PART NO.	A GO DIA.	B NO-GO DIA.	SELECTOR NUMBER
G125	.0390	.0440	4

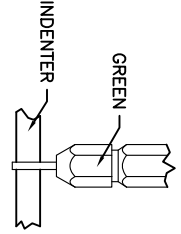
GAGING INSTRUCTIONS

CAUTION!
DO NOT CRIMP GAGE!

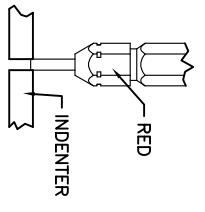


"GO" GAGING: OPERATE TOOL TO FULLY CLOSED POSITION. INSERT "GO" GAGE END AS SHOWN. GAGE MUST PASS FREELY BETWEEN INDENTER TIPS.

"NO-GO" GAGING: OPERATE TOOL TO FULLY CLOSED POSITION. INSERT "NO-GO" GAGE END AS SHOWN. THE "NO-GO" MAY PARTIALLY ENTER THE INDENTER OPENING, BUT MUST NOT PASS COMPLETELY THROUGH THE OPENING.



SELECTOR NUMBER	A GO DIA.	B NO-GO DIA.
1	.0280	.0330
2	.0320	.0370
3	.0360	.0410
4	.0390	.0440
5	.0450	.0500
6	.0520	.0570
7	.0590	.0640
8	.0680	.0730



CONTACT SIZE	LOCATOR "TURRET" POSITION COLOR	SELECTOR NUMBER
20-20	RED	1
16-22	BLUE	4
16-20	BLUE	1
16-16	BLUE	4
12-16	YELLOW	4
12-12	YELLOW	1

MATERIALS LIST

SINE Systems Corporation

A Subsidiary of Amphenol Corporation
44724 Mowley Drive
Carlton Township, MI 48036

INSTRUCTIONS FOR CA-5E12
CRIMPER, PNEUMATIC

QUANTITY	PART NUMBER	DESCRIPTION	ITEM
1	S2-15220	CRIMPER, PNEUMATIC, CA-5E12	9
1	S2-15220	INSTRUCTIONS FOR CA-5E12 CRIMPER, PNEUMATIC	7

A

B

C

D

4

3

2

1

4

3

2

1

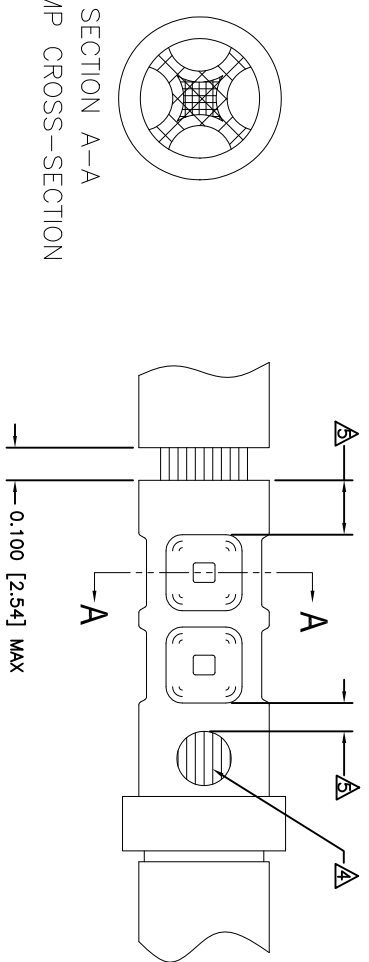
REVOLUTIONS		DESCRIPTION	DATE	BY	APPR
REV	ZONE	ECO	RELEASE	01/19/13	KMM
A1	-	-	-	KMM	REC

CONTACT P/N	SIZE TYPE	WIRE SIZE	REF. ONLY TENSILE LBS[N]
AT60-204-12141	12 PIN	12 AWG	75 [334]
AT62-203-12141	12 SOC	3.0mm ² 2.5mm ² 14 AWG ² 2.0mm ²	70 [311]
AT60-220-1231	12 PIN	12 AWG	75 [334]
AT62-210-1231	12 SOC	3.0mm ² 2.5mm ² 14 AWG ² 2.0mm ²	70 [311]

RECOMMENDED STRIP LENGTH	
CONTACT SIZE	STRIP LENGTH INCH[MM]
12	0.222-0.284 [5.64-7.21]

CRIMP TOOLING						
CONTACT SIZE	CRIMP TOOL PART NUMBER	CONTACT LOCATOR "TURRET" POSITION	WIRE SELECTOR NUMBER	GO GAGE INCH[MM]	"NOGO" GAGE INCH[MM]	REMARKS
12	CA-5D12 CA-5E12	YELLOW	8	0.068 [1.72]	0.073 [1.85]	
12	CA-5D12 CA-5E12	YELLOW	7	0.059 [1.50]	0.064 [1.63]	SIZE 12 WITH 14 AWG WIRE

- NOTES: UNLESS OTHERWISE SPECIFIED
- 1. MINIMUM +/-0.0005 [0.013] TOLERANCE STEEL GAGE PINS. DO NOT CRIMP GAGE PINS. CLOSE DIE, THEN USE GAGE PINS.
 - 2. "1231" = CONTACT PLATING IS GOLD
 - 3. "12141" = CONTACT PLATING IS NICKEL
 - 4. PULL RATE OF 1.0 IN [25.4] PER MINUTE. ACTUAL STRENGTH DEPENDS ON WIRE SIZE.
 - 5. CONDUCTOR STRANDS MUST BE VISIBLE THRU THE INSPECTION HOLE PRIOR TO CRIMP.
 - 6. PROPER CRIMP TOOLING WILL PRODUCE A CRIMP CENTERED BETWEEN THE INSPECTION HOLE AND CRIMP BARREL END.
 - 7. WIRE SIZES PER SAE J128 AND J1560 [DIN 72551-6] REFERENCE INSTRUCTION MANUALS S2-15219 AND S2-15220 FOR CA-5D12 AND CA-5E12 HAND AND PNEUMATIC CRIMPER.
 - 8. THE CRIMP HEIGHT DIMENSION AFTER CRIMPING MAY VARY FROM THE VALUES LISTED FOR THE "GO-NOGO" PINS.



QUANTITY	PART NUMBER	DESCRIPTION	ITEM
UNLESS OTHERWISE SPECIFIED			
1) All dimensions are in inches.			
2) Fractional dimensions shall be in increments of 1/64.			
3) R. DEC 30.00 Precision 31/64			
4) R. DEC 30.01 Angles 31/64			
5) Fabrication Standards Per:			
a) ASME Y12.13			
b) MIL-STD-20020			
c) MIL-STD-20020			
d) MIL-STD-20020			
MATERIAL SPECIFICATIONS:			
NA			
PROCESS SPECIFICATIONS:			
NEXT ASSY:			
SIGNATURES		DATE	
DESIGNER: KMM	DATE: 01/15/13	SINE Systems Corporation	
CHECKER: KMM	DATE: 01/15/13	A Subsidiary of Amphenol Corporation	
ENGINEER: KMM	DATE: 01/15/13	44724 Moley Drive	
APPROVAL: R. CURRY	DATE: 01/15/13	Clinton Township, MI 48036	
CUSTOMER:		ATP CRIMP INFORMATION	
MATERIAL SPECIFICATIONS:		SOLID MACHINED CONTACTS	
PROCESS SPECIFICATIONS:		SIZE PER SAE J128 AND J1560	
NEXT ASSY:		S2-15238	
MATERIAL SPECIFICATIONS:		SCALE: NONE	
PROCESS SPECIFICATIONS:		SHEET 3 OF 7	
NEXT ASSY:		REVISION A1	

REV ZONE		ECO		RELEASE		REVISIONS		DESCRIPTION		DATE	BY	APPR
AT	-	-	-	-	-	-	-	-	-	1/17/13	KMM	REC

SOLID CONTACT SIZE	SOLID CONTACT PART NUMBERS	WIRE SIZE AWG (mm ²)	RECOMMENDED STRIP LENGTH INCH (mm)	MIN CONTACT RETENTION LBS (N)	REF CRIMP TENSILE RETENTION LBS (N)	MAX RATED AMP@125°C CONTINUOUS
12	AT80-204-12141	12-14 (2.0-3.0)	.222 - .284 [5.64-7.21]	30 [133]	12 AWG 75 [334] 14 AWG 70 [311]	25
	AT82-203-12141					
	AT80-220-1231					

S&F CONTACT SIZE	STAMPED CONTACT PART NUMBERS		WIRE SIZE AWG (mm ²)	WIRE INSULATION O.D. RANGE	RECOMMENDED STRIP LENGTH INCH (mm)	MIN CONTACT RETENTION LBS (N)	REF CRIMP TENSILE LBS (N)	MAX RATED AMP@125°C CONTINUOUS
	PIN	SOCKET						
12	AT80-12-01**	AT82-12-01**	12-14 (2.0-4.0)	.113 - .176 (2.87-4.47)	.250+/- .025 (6.35+/-0.64)	30 [133]	70 [311]	25

CONTACT RESISTANCE STRENGTH (LESS DROP THROUGH WIRE)				MATERIAL SPECIFICATION AND PLATING ** CODES			
CONTACT SIZE	TEST CURRENT	MILLIVOLT DROP SOLID	MILLIVOLT DROP S&F	SOLID MACHINED CONTACT PLATING OPTIONS: Δ			
12	25	60	100	PIN: COPPER ALLOY SOCKET: COPPER ALLOY WITH STAINLESS STEEL SLEEVE			
14	18	60	100	SOLID MACHINED CONTACT PLATING OPTIONS: Δ			
16	13	60	100	31= GOLD* 141= NICKEL			
18	10	60	100	STAMPED CONTACT PLATING OPTIONS: Δ			
20	7.5	60	100	88= NICKEL 44= GOLD*			

GOLD* = PLATING IS AVAILABLE (RECOMMENDED) FOR ONLY (<5V) CIRCUIT APPLICATIONS
MATERIALS AND PLATINGS ARE ROHS COMPLIANT

NOTES: UNLESS OTHERWISE SPECIFIED

- ALL DIMENSIONS ARE INCHES (MM).
- ALL FORCES ARE IN LBS (POUNDS) AND "N" (NEWTONS).
- CONTACT RETENTION TEST PULL RATE SHALL BE 1.0 INCH/25.4 PER MINUTE MAXIMUM. WIRE SIZE WILL AFFECT THE TRUE STRENGTH OF THE CRIMP.
- WIRE SIZES AND INSULATION RANGES ARE FOR REFERENCE ONLY. THE ACTUAL INSULATION RANGE DEPENDS ON CONNECTOR GROMMET SEALING SIZE.

SEE SPECIFICATIONS LISTED BELOW FOR INDIVIDUAL CRIMP INFORMATION:

SOLID CONTACTS	SIZE	*STAMPED* CONTACTS	SIZE
S2-15238	12	S2-15239	12

- MAXIMUM RATED CURRENT IN CHART DEPENDS ON CONTACT SIZE. ACTUAL RATED CURRENT DEPENDS ON WIRE SIZE.
- CONTACT FACTORY FOR ALL AVAILABLE PLATING ON SPECIFIC CONTACTS.
- AMPHENOL SINE PERFORMANCE SPECIFICATIONS REQUIRE THE USE OF AMPHENOL SINE APPROVED TOOLING.

QUANTITY	PART NUMBER	DESCRIPTION	ITEM
UNLESS OTHERWISE SPECIFIED			
1) All dimensions are in inches.	SIGNATURES	DATE	
2) Pl. SEE 30.00	DATE	1/17/13	
3) Pl. SEE 30.01	ORDERER	1/17/13	
4) Pl. SEE 30.02	ENGINEER		
5) Pl. SEE 30.03	APPROVER	1/17/13	
6) Pl. SEE 30.04	CUSTOMER		
7) Pl. SEE 30.05			
8) Pl. SEE 30.06			
9) Pl. SEE 30.07			
10) Pl. SEE 30.08			
11) Pl. SEE 30.09			
12) Pl. SEE 30.10			
13) Pl. SEE 30.11			
14) Pl. SEE 30.12			
15) Pl. SEE 30.13			
16) Pl. SEE 30.14			
17) Pl. SEE 30.15			
18) Pl. SEE 30.16			
19) Pl. SEE 30.17			
20) Pl. SEE 30.18			
21) Pl. SEE 30.19			
22) Pl. SEE 30.20			
23) Pl. SEE 30.21			
24) Pl. SEE 30.22			
25) Pl. SEE 30.23			
26) Pl. SEE 30.24			
27) Pl. SEE 30.25			
28) Pl. SEE 30.26			
29) Pl. SEE 30.27			
30) Pl. SEE 30.28			
31) Pl. SEE 30.29			
32) Pl. SEE 30.30			
33) Pl. SEE 30.31			
34) Pl. SEE 30.32			
35) Pl. SEE 30.33			
36) Pl. SEE 30.34			
37) Pl. SEE 30.35			
38) Pl. SEE 30.36			
39) Pl. SEE 30.37			
40) Pl. SEE 30.38			
41) Pl. SEE 30.39			
42) Pl. SEE 30.40			
43) Pl. SEE 30.41			
44) Pl. SEE 30.42			
45) Pl. SEE 30.43			
46) Pl. SEE 30.44			
47) Pl. SEE 30.45			
48) Pl. SEE 30.46			
49) Pl. SEE 30.47			
50) Pl. SEE 30.48			
51) Pl. SEE 30.49			
52) Pl. SEE 30.50			
53) Pl. SEE 30.51			
54) Pl. SEE 30.52			
55) Pl. SEE 30.53			
56) Pl. SEE 30.54			
57) Pl. SEE 30.55			
58) Pl. SEE 30.56			
59) Pl. SEE 30.57			
60) Pl. SEE 30.58			
61) Pl. SEE 30.59			
62) Pl. SEE 30.60			
63) Pl. SEE 30.61			
64) Pl. SEE 30.62			
65) Pl. SEE 30.63			
66) Pl. SEE 30.64			
67) Pl. SEE 30.65			
68) Pl. SEE 30.66			
69) Pl. SEE 30.67			
70) Pl. SEE 30.68			
71) Pl. SEE 30.69			
72) Pl. SEE 30.70			
73) Pl. SEE 30.71			
74) Pl. SEE 30.72			
75) Pl. SEE 30.73			
76) Pl. SEE 30.74			
77) Pl. SEE 30.75			
78) Pl. SEE 30.76			
79) Pl. SEE 30.77			
80) Pl. SEE 30.78			
81) Pl. SEE 30.79			
82) Pl. SEE 30.80			
83) Pl. SEE 30.81			
84) Pl. SEE 30.82			
85) Pl. SEE 30.83			
86) Pl. SEE 30.84			
87) Pl. SEE 30.85			
88) Pl. SEE 30.86			
89) Pl. SEE 30.87			
90) Pl. SEE 30.88			
91) Pl. SEE 30.89			
92) Pl. SEE 30.90			
93) Pl. SEE 30.91			
94) Pl. SEE 30.92			
95) Pl. SEE 30.93			
96) Pl. SEE 30.94			
97) Pl. SEE 30.95			
98) Pl. SEE 30.96			
99) Pl. SEE 30.97			
100) Pl. SEE 30.98			
101) Pl. SEE 30.99			
102) Pl. SEE 30.100			

GENERAL CONTACT DATA
STAMPED AND FORMED / MACHINED
SIZE: 10K44
SCALE: NONE
S2-15242
SHEET 7 OF 7

MATERIALS LIST
SINE Systems Corporation
A Subsidiary of Amphenol Corporation
44724 Moley Drive
Clinton Township, MI 48036

PROCESS SPECIFICATIONS
NEXT ASSY:

UNLESS OTHERWISE SPECIFIED
1) All dimensions are in inches.
2) Pl. SEE 30.00
3) Pl. SEE 30.01
4) Pl. SEE 30.02
5) Pl. SEE 30.03
6) Pl. SEE 30.04
7) Pl. SEE 30.05
8) Pl. SEE 30.06
9) Pl. SEE 30.07
10) Pl. SEE 30.08
11) Pl. SEE 30.09
12) Pl. SEE 30.10
13) Pl. SEE 30.11
14) Pl. SEE 30.12
15) Pl. SEE 30.13
16) Pl. SEE 30.14
17) Pl. SEE 30.15
18) Pl. SEE 30.16
19) Pl. SEE 30.17
20) Pl. SEE 30.18
21) Pl. SEE 30.19
22) Pl. SEE 30.20
23) Pl. SEE 30.21
24) Pl. SEE 30.22
25) Pl. SEE 30.23
26) Pl. SEE 30.24
27) Pl. SEE 30.25
28) Pl. SEE 30.26
29) Pl. SEE 30.27
30) Pl. SEE 30.28
31) Pl. SEE 30.29
32) Pl. SEE 30.30
33) Pl. SEE 30.31
34) Pl. SEE 30.32
35) Pl. SEE 30.33
36) Pl. SEE 30.34
37) Pl. SEE 30.35
38) Pl. SEE 30.36
39) Pl. SEE 30.37
40) Pl. SEE 30.38
41) Pl. SEE 30.39
42) Pl. SEE 30.40
43) Pl. SEE 30.41
44) Pl. SEE 30.42
45) Pl. SEE 30.43
46) Pl. SEE 30.44
47) Pl. SEE 30.45
48) Pl. SEE 30.46
49) Pl. SEE 30.47
50) Pl. SEE 30.48
51) Pl. SEE 30.49
52) Pl. SEE 30.50
53) Pl. SEE 30.51
54) Pl. SEE 30.52
55) Pl. SEE 30.53
56) Pl. SEE 30.54
57) Pl. SEE 30.55
58) Pl. SEE 30.56
59) Pl. SEE 30.57
60) Pl. SEE 30.58
61) Pl. SEE 30.59
62) Pl. SEE 30.60
63) Pl. SEE 30.61
64) Pl. SEE 30.62
65) Pl. SEE 30.63
66) Pl. SEE 30.64
67) Pl. SEE 30.65
68) Pl. SEE 30.66
69) Pl. SEE 30.67
70) Pl. SEE 30.68
71) Pl. SEE 30.69
72) Pl. SEE 30.70
73) Pl. SEE 30.71
74) Pl. SEE 30.72
75) Pl. SEE 30.73
76) Pl. SEE 30.74
77) Pl. SEE 30.75
78) Pl. SEE 30.76
79) Pl. SEE 30.77
80) Pl. SEE 30.78
81) Pl. SEE 30.79
82) Pl. SEE 30.80
83) Pl. SEE 30.81
84) Pl. SEE 30.82
85) Pl. SEE 30.83
86) Pl. SEE 30.84
87) Pl. SEE 30.85
88) Pl. SEE 30.86
89) Pl. SEE 30.87
90) Pl. SEE 30.88
91) Pl. SEE 30.89
92) Pl. SEE 30.90
93) Pl. SEE 30.91
94) Pl. SEE 30.92
95) Pl. SEE 30.93
96) Pl. SEE 30.94
97) Pl. SEE 30.95
98) Pl. SEE 30.96
99) Pl. SEE 30.97
100) Pl. SEE 30.98
101) Pl. SEE 30.99
102) Pl. SEE 30.100