

**DC  
Sockets with flange**

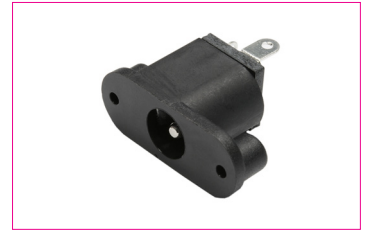
Solder lugs, mounting on rear side



**SPECIFICATION:**

Current rating: 2 A DC / 1 A AC  
 Voltage rating: 12 V DC / 100 V AC  
 Insulation resistance: 100 MΩ min. at 250 V DC  
 Contact resistance: 30 mΩ max.  
 Dielectric voltage: 500 V AC  
 Insertion / Extraction Force: 0.3~3.0 kg  
 Operating life: 4000 Mating cycles

**RoHS  
COMPLIANT**



**MATERIAL:**

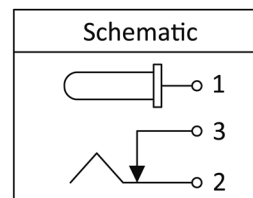
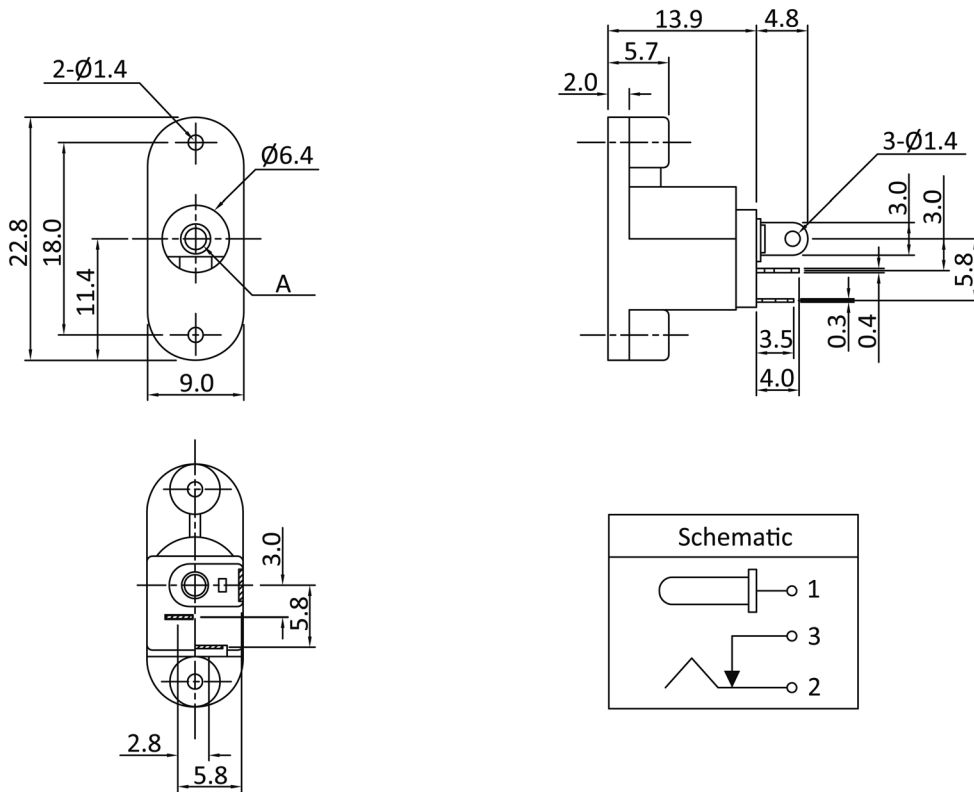
Housing: PBT UL94V-0  
 Barrel: Brass  
 Terminal: Copper alloy

**FINISH:**

Barrel: Nickel plated  
 Terminal: Tin plated

**TOLERANCE:**

.X ±0.30



**Order-Information**

<b>Identifier:</b>	<b>Diameter Pin (A):</b>
DC17JD	#
DC Socket with flange	20: Diameter 2.0 mm
	25: Diameter 2.5 mm