

SPECIFICATION:

Impedance:	50 Ohm
Voltage rating:	335 V RMS max.
Insulation resistance:	5000 MΩ min.
Contact resistance:	Inner conductor 5 mΩ max. Outer conductor 2.5 mΩ max.
Dielectric voltage:	1000 V RMS max.

MATERIAL:

Insulator:	Teflon
Inner conductor:	Brass
Shell:	Brass

FINISH:

Inner conductor:	Gold plated 2 μ"
Outer conductor:	Gold plated 2 μ"

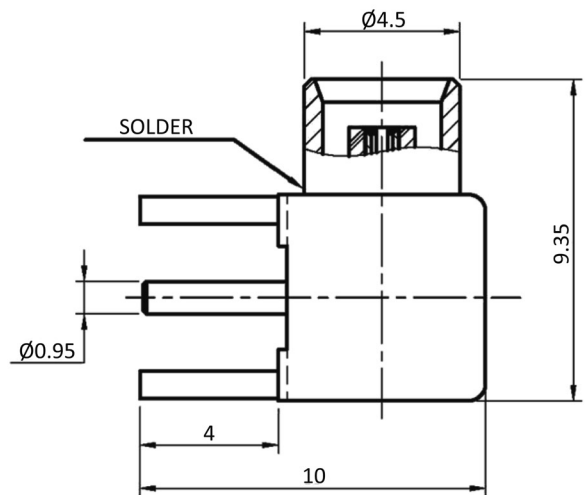
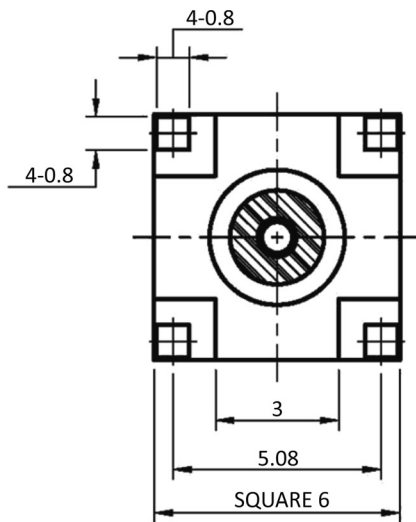
HANDLING:

Packing:	Bag
----------	-----

TOLERANCE:

.X	± 0.40
.XX	± 0.20

**RoHS
COMPLIANT**



Order-Information

Identifier:

MCX6F

MCX Female receptacle angled, gold plated, PCB mount