

SPECIFICATION:

Impedance: 50 Ohm
 Voltage rating: 335 V RMS max.
 Insulation resistance: 5000 MΩ min.
 Contact resistance: Inner conductor 5 mΩ max.
 Outer conductor 2.5 mΩ max.
 Dielectric voltage: 1000 V RMS max.

MATERIAL:

Insulator: Teflon
 Inner conductor: Brass
 Shell: Brass

FINISH:

Inner conductor: Gold plated 2 μ"
 Outer conductor: Gold plated 2 μ"

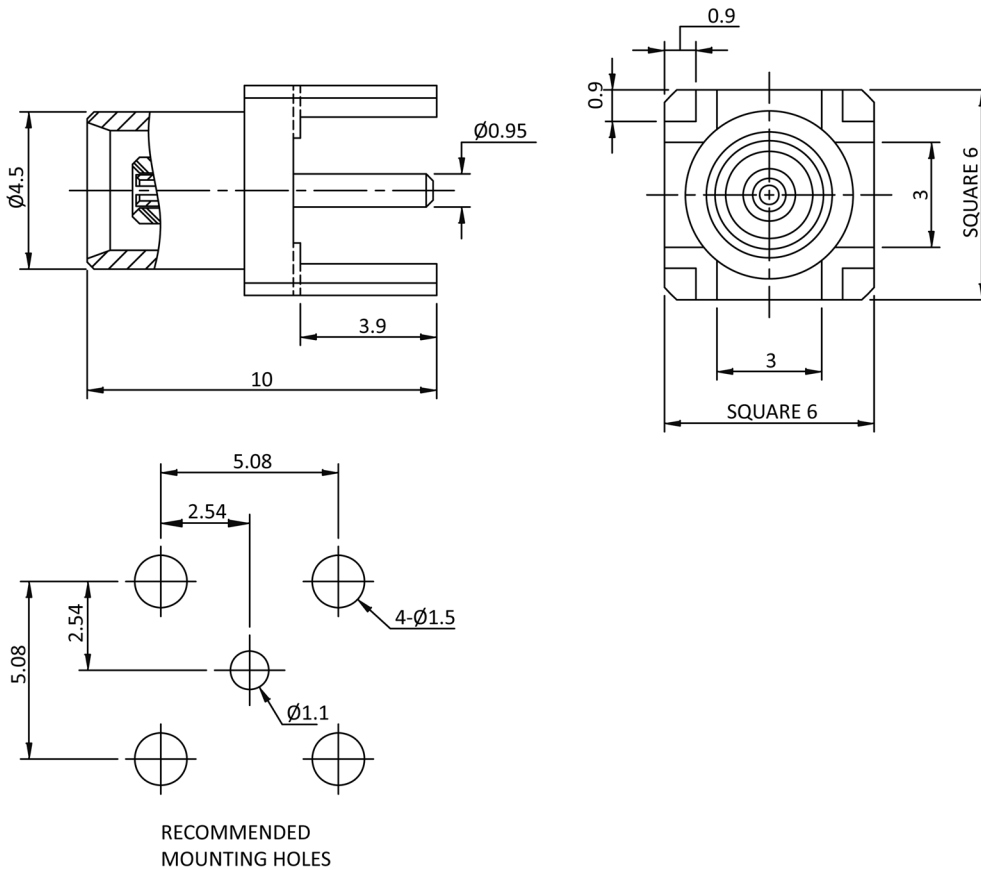
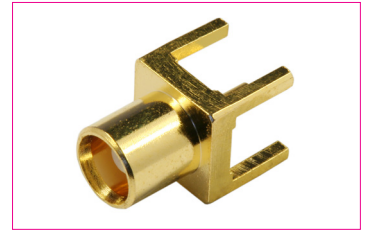
HANDLING:

Packing: Bag

TOLERANCE:

.X ± 0.40
 .XX ± 0.20

RoHS
COMPLIANT



Order-Information

Identifier:

MCX7FG5

MCX Female receptacle gold plated, PCB mount