

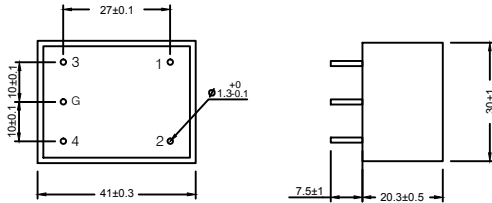
SPECIFICATION FOR APPROVAL

TO: 頂興

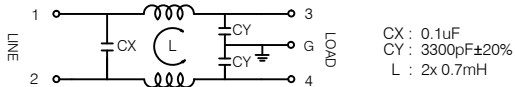
2/1

PART NAME	EMI FILTER	FTB-5553	
	YF06T6	SAMPLE DATE	NOV.07.2013
USED NO		OUR DRAWING NO	YDR-00060f

1. PHYSICAL DIMENSIONS:(mm)



2. SCHEMATIC:



REPORTED BY	CHECKED BY	APPROVED BY	3
			2
			REV. 1

SPECIFICATION FOR APPROVAL

TO: 頂興

2/2

PART NAME	EMI FILTER	FTB-5553	
	YF06T6	SAMPLE DATE	NOV.07.2013
USED NO		OUR DRAWING NO	YDR-00060f

3. ELECTRICAL CHARACTERISTICS:

3-1. RATED VOLTAGE	125/250VAC
3-2. RATED CURRENT	6 A
3-3. OPERATING FREQUENCY	50/60Hz
3-4. LEAKAGE CURRENT: EACH LINE TO GROUND 250VAC 50Hz	0.8mA MAX
3-5. HIPOT RATING: (FOR ONE MINUTE) LINE TO LINE	1450VDC
LINE TO GROUND	1800VAC
3-6. INSULATION RESISTANCE	250VDC/100MOHM MIN
3-7. DIRECT CURRENT RESISTANCE	0.15 OHM MAX
3-8. OPERATING TEMPERATURE	-25 TO +85°C

4. SAFETY COMPLIANCE:

UL FILE NO: E134751
 CSA FILE NO: LR95210
 VDE FILE NO: 40007880
 CE

5. INSERTION LOSS IN dB:

FREQUENCY	0.15MHZ	0.5MHZ	1MHZ	5MHZ	10MHZ	30MHZ	50MHZ
common mode	42	38	33	45	51	43	31
normal mode	8	16	20	35	33	28	31

■ ABOVE TABLES ARE REFERENCE ONLY.

REPORTED BY	CHECKED BY	APPROVED BY	6
			5
			REV. 4