

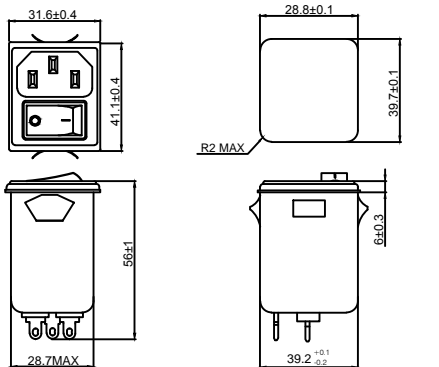
# SPECIFICATION FOR APPROVAL

TO: 頂興

1/2

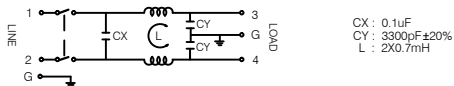
|           |                |             |
|-----------|----------------|-------------|
| PART NAME | EMI FILTER     | FTB-5557    |
|           | YR06A3         | NOV.11.2013 |
| MODEL NO  | OUR DRAWING NO | YDR-00360d  |

## 1. PHYSICAL DIMENSIONS:(mm)



SUGGESTED CUTOUT MOUNTING DIMENSIONS OF SOCKET

## 2. SCHEMATIC:



|             |            |             |        |
|-------------|------------|-------------|--------|
| REPORTED BY | CHECKED BY | APPROVED BY | 3      |
|             |            |             | 2      |
|             |            |             | REV. 1 |

CK002 30101

# SPECIFICATION FOR APPROVAL

TO: 頂興

2/2

|           |                |             |
|-----------|----------------|-------------|
| PART NAME | EMI FILTER     | FTB-5557    |
|           | YR06A3         | JUN.24.2013 |
| MODEL NO  | OUR DRAWING NO | YDR-00360d  |

## 3.ELECTRICAL CHARACTERISTICS:

- 3-1.RATED VOLTAGE .....125/250VAC
- 3-2.RATED CURRENT .....6 A
- 3-3.OPERATING FREQUENCY ..... 50/60Hz
- 3-4.LEAKAGE CURRENT-EACH LINE TO GROUND  
250VAC 50Hz ..... 0.8mA MAX
- 3-5.HIPOT RATING.(FOR ONE MINUTE)  
LINE TO LINE ..... 1450VDC  
LINE TO GROUND ..... 1800VAC
- 3-6.INSULATION RESISTANCE ..... 250VDC/100MOHM MIN
- 3-7.DIRECT CURRENT RESISTANCE ..... 0.15 OHM MAX
- 3-8.OPERATING TEMPERATURE ..... -25 TO +85 C

## 4. SAFETY COMPLIANCE:

UL FILE NO:E134751  
VDE FILE NO:40028561  
CQC FILE NO:12001067993  
CE

## 5. INSERTION LOSS IN dB:

| INSERTION LOSS | 0.15MHZ | 0.5MHZ | 1MHZ | 5MHZ | 10MHZ | 30MHZ | 50MHZ |
|----------------|---------|--------|------|------|-------|-------|-------|
| common mode    | 43      | 41     | 36   | 46   | 51    | 48    | 46    |
| normal mode    | 8       | 17     | 21   | 32   | 33    | 36    | 46    |

■ ABOVE TABLES ARE REFERENCE ONLY.

|             |            |             |        |
|-------------|------------|-------------|--------|
| REPORTED BY | CHECKED BY | APPROVED BY | 6      |
|             |            |             | 5      |
|             |            |             | REV. 4 |

CK002 30101