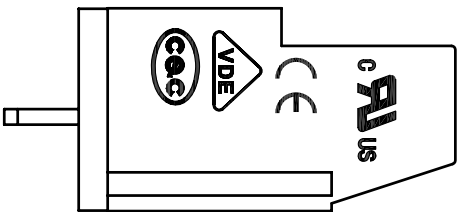
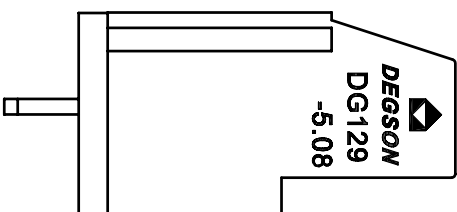
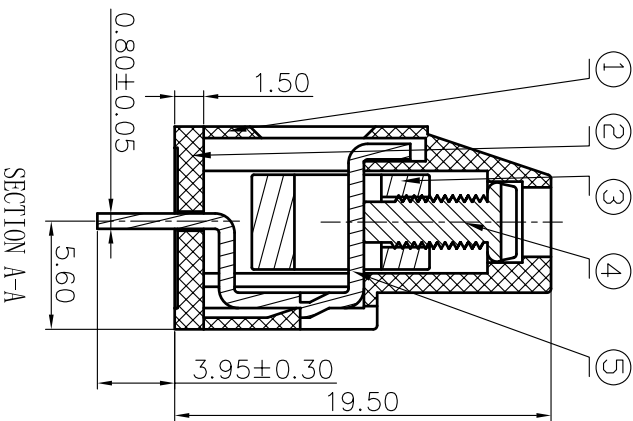
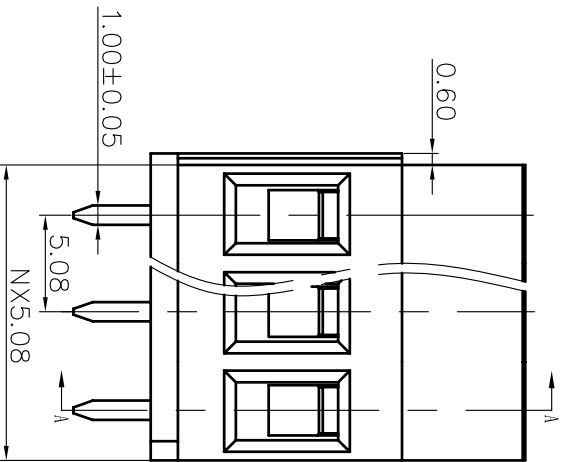
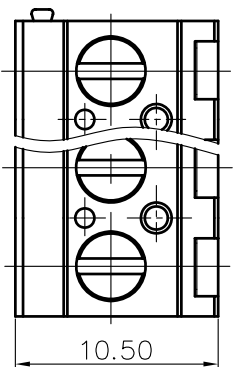


REVISION RECORD				
REV	ECN	DESCRIPTION	DRFT	DATE



NOTES:

1. DIMENSION SHALL BE INTERPRETED PER ASME Y14.5-2009.
2. PITCH: 5.08MM , POLES: 2-XXP
3. RATED VOLTAGE/CURRENT: UL 3000V/20A VDE 250V/20A
4. OPERATION TEMPERATURES: -40°C~+105°C
5. WITHSTANDING VOLTAGE: AC2000V/1MIN
6. INSULATION RESISTANCE: 5000MΩ/DC1000V
7. WIRE RANGE: 26~12AWG, 0.5~2.5MM<sup>2</sup>
8. MAX. TORQUE VALUE: M3, 5.1KGF.CM
9. UNDIMENSIONED TOLERANCES:

Pitch range in mm	Nominal dimension	range
over 6	over 30	over 100
to 10	to 60	to 100
to 10	to 100	to 150
to 24	to 60	to 150
to 30	to 100	to 150
to 10	to 30	to 150
to 15	to 25	to 30
to 25	to 30	to 35
to 30	to 35	to 40
to 35	to 40	to 45
to 40	to 45	to 50

ITEM	NAME OF PART	NO. OF PART	QTY	MATERIAL	NOTES
5	DG129-Pin header	4029B00010(H)	XX	Brass	SnCe
4	DG129-Screws-M3	S000001430(H)	XX	Steel	C <sup>2+</sup> Zn
3	DG129-Cage	X000000200(H)	XX	Brass	Ni plated
2	DG129-5.08-Cover	4042C0YXXA(H)	1	PA66	UL94V-0
1	DG129-5.08-Housing	4042A0YXXA(H)	1	PA66	UL94V-0



NAME: DG129-5.08-XXP-1Y-00A(H)

DETACHED LISTS		FINISH:		TITLE:		REV	
TOLERANCES EXCEPT AS NOTED	ANGLES ± 1°	THIRD ANGLE PROJECTION	DRFT: DZJ 10/03/05"	DO NOT SCALE DRAWING	SCALE	N/A	SHEET 1/1
MM (INCH)							
XX ±	XX ±	CHKO:					T7
.XX ±	.XX ±	APPD:					
.XXX ±	.XXX ±						

A 8 7 6 5 4 3 2 1