

BG Ръководство за монтаж  
 CN 安装说明书  
 CZ Návod k montáži  
 D Montageanleitung  
 DK Monteringsvejledning  
 E Manual de montaje  
 EST Paigaldusjuhend  
 F Instruction de montage

FIN Asennusohje  
 GB Assembly Instructions  
 GE დამონტაჟების ინსტრუქციები  
 GR Οδηγία συναρμολόγησης  
 H Szerelési útmutató  
 HR Upute za montažu  
 I Istruzioni di montaggio  
 IL הוראות הרכבה

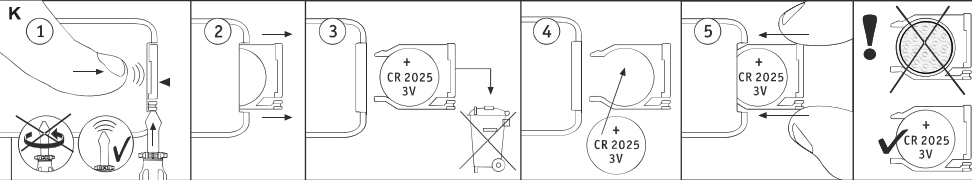
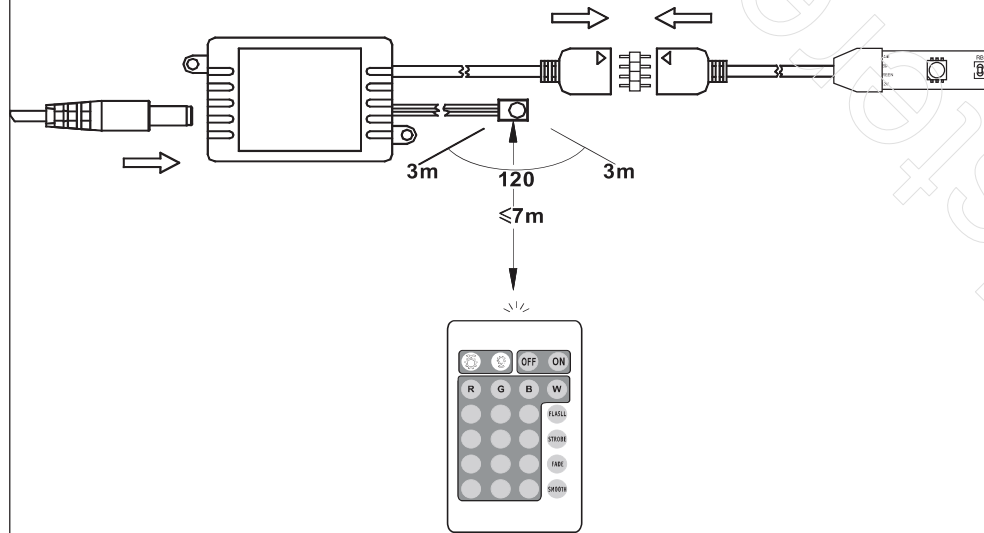
IR دستور العمل نصب  
 J 組立指示  
 KSA دليل التركيب  
 LT Montavimo instrukcija  
 LV Montāžas pamācība  
 N Monteringsanvisning  
 NL Montagehandleiding  
 P Instruções de montagem

PL Instrukcja montażu  
 RO Instrucțiuni de montare  
 RUS Инструкция по монтажу  
 S Montageanvisning  
 SK Návod na montáž  
 SLO Navodila za montažo  
 SRB Uputstvo za montažu  
 TR Montaj talimatı  
 UA Інструкція з встановлення

300 X 12V DC/56W

1205-70

A



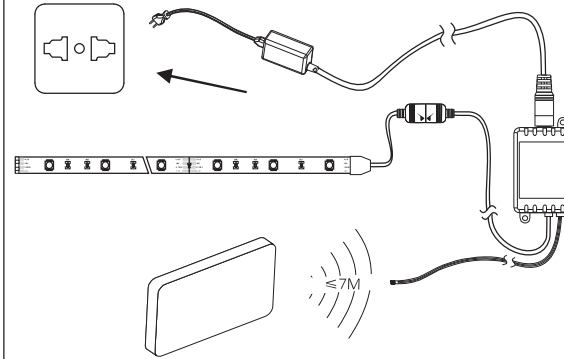
Bitte geben Sie bei technischen Fragen die Chargennummer (xxx-xxx-xx-xx-xxxxx-xxx) an. Diese finden Sie auf dem Typenschild.  
 Please let us know the batch number (xxx-xxx-xx-xx-xxxxx-xxx) for any technical questions. This can be found on the rating plate.

03/2013

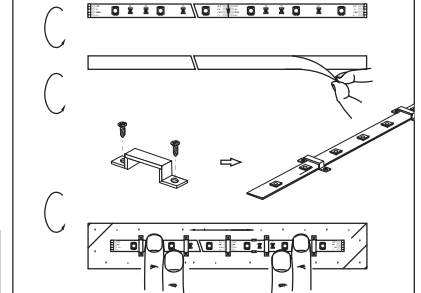
Paul Neuhaus  
 LIGHTS FOR LIVING

Paul Neuhaus GmbH  
 Olakenweg 36 • 59457 Werl  
 Germany

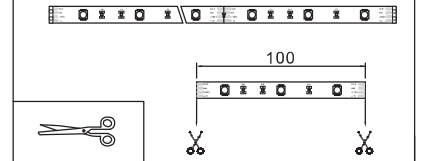
B



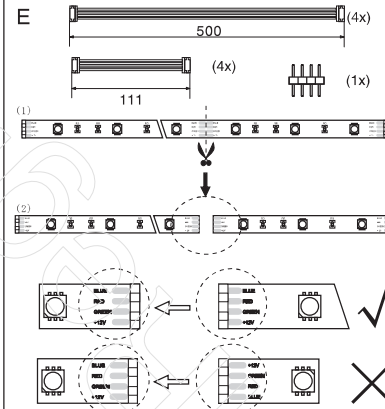
C



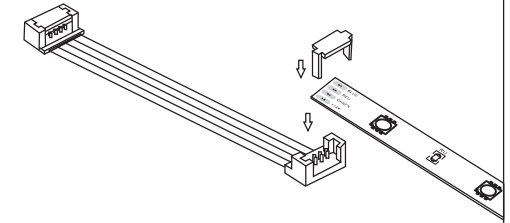
D



E



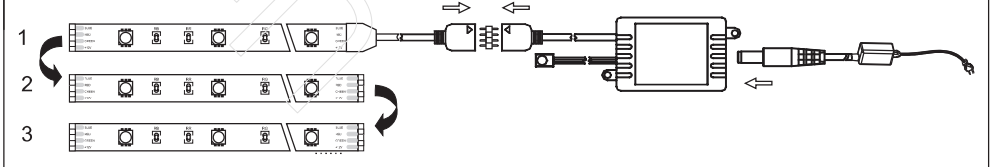
(3)



(1)



F



G

