



# VOLTCRAFT®

## VOLTCRAFT® - TOP PERFORMANCE IN EVERY WAY

“Since 1982, our product range has been dynamically adapting to the constant changes in the industry. We commit to offering first-class quality to our customers while delivering an excellent cost-performance ratio. This philosophy remains the cornerstone of Voltcraft’s success.”

# 4500PRO D/FR/UK/CH ENERGY COSTS METER

CE

VERSION 12/21

Nº 1340670 (D) / 1340671 (FR) / 1340672 (UK) / 1340673 (CH)

The energy costs meter is intended for measuring and analyzing consumption data of electric appliances. The meter is to be placed between a wall socket and electric appliance and does not require any further installation efforts. The device must only be used with a normal isolated ground receptacle in your home.

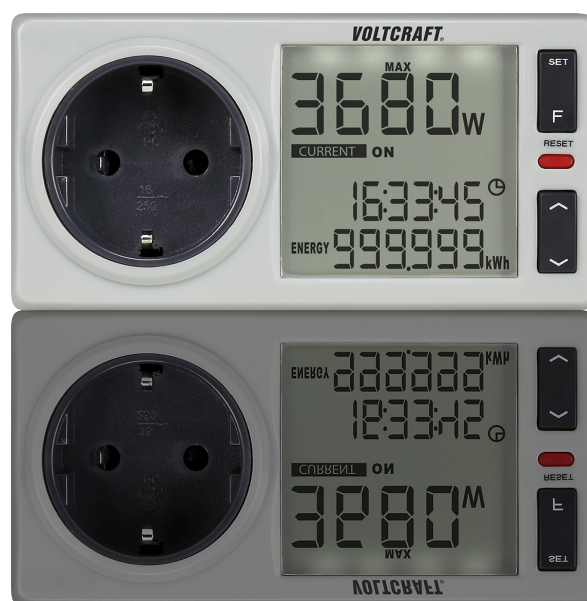
## HIGHLIGHTS

Cost forecast per year/month/week/day //

2 adjustable electricity rates with

2 switching times //

4 currencies to choose //



# TECHNICAL DATA

Operating voltage	230 V/AC 50 Hz (D/FR/CH) 220 - 240 V/AC 50 Hz (UK)
Self power consumption	0.4 W
Internal power supply	1 x 2.4 V 40 mAh NiMH battery
Max. power/current	3680 W / 16 A (D/FR) 3120 W / 13 A (UK) 2300 W / 10 A (CH)
Voltage measuring range	190 - 270 V
Frequency measuring range	46 - 65 Hz
Current resolution	0.001 A (0 - 9.999 A) 0.01 A (10.00 - 16.00 A) 1 W (1000 W - 3680 W)
Power measuring range	0.23 - 3999 W
Power resolution	0.01 W (0.23 W - 99.99 W) 0.1 W (100.0 W - 999.9 W) 1 W (1000 W - 3680 W)
Power factor measuring range	0.01 - 1.00
Power factor resolution	0.01
GHG/CO2 measuring range	0.001 - 9999999 kg
GHG/CO2 resolution	0.001 kg
Measuring time range	0 hour 0 min. - 9999 h 59 min.
Overload value setting range	1 - 19 A / 1 - 3999 W
Time display	Hours, minutes, seconds with 12/24 hour display (no weekday display/no date display)
Currency	€, \$, £, CHF
Electricity rate resolution	0.001
Operating conditions	+5 to +40 °C, 10 - 90 % RH (non-condensing) Operating height: max. 2000 m (above sea level)
Storage conditions	-10 to +60 °C, 10 - 90 % RH (non-condensing)
Dimensions (W x H x D)	125 x 79 x 63 mm (D/FR/CH) 125 x 72 x 63 mm (UK)
Weight	approx. 180 g

Accuracy (at 23°C (+/- 5°C)) at harmonic distortion of <15%	
Voltage	+/- (1 % + 1 count)
Current	+/- (1 % + 5 count)
Power	+/- (1 % + 1 count)

## PACKAGE CONTENT

Energy costs meter // Operating instructions

This is a publication by Conrad Electronic SE, Klaus-Conrad-Str. 1, D-92240 Hirschau ([www.conrad.com](http://www.conrad.com)).

All rights including translation reserved. Reproduction by any method, e.g. photocopy, microfilming, or the capture in electronic data processing systems require the prior written approval by the editor. Reprinting, also in part, is prohibited. This publication represent the technical status at the time of printing.