

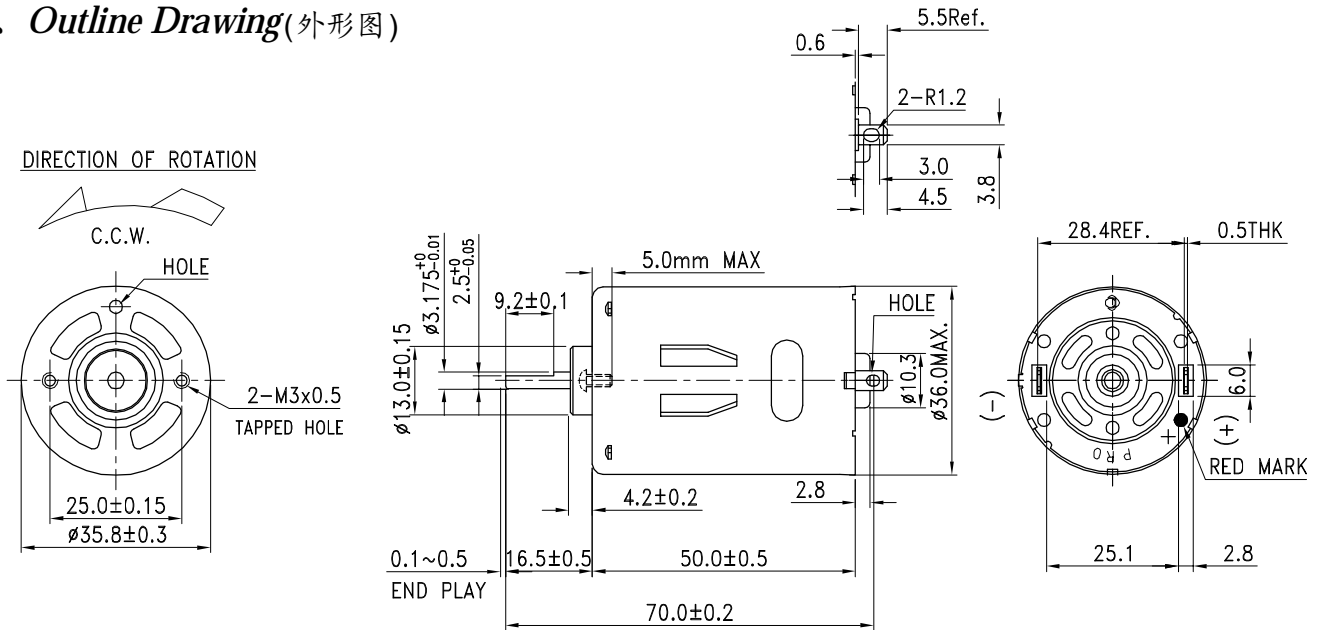
MOTOR SPECIFICATION AND PERFORMANCE CHARACTERISTICS:

MODEL: SL540CG-8020-70DF

DWG No.: SL160226

DATE: 2016-02-26

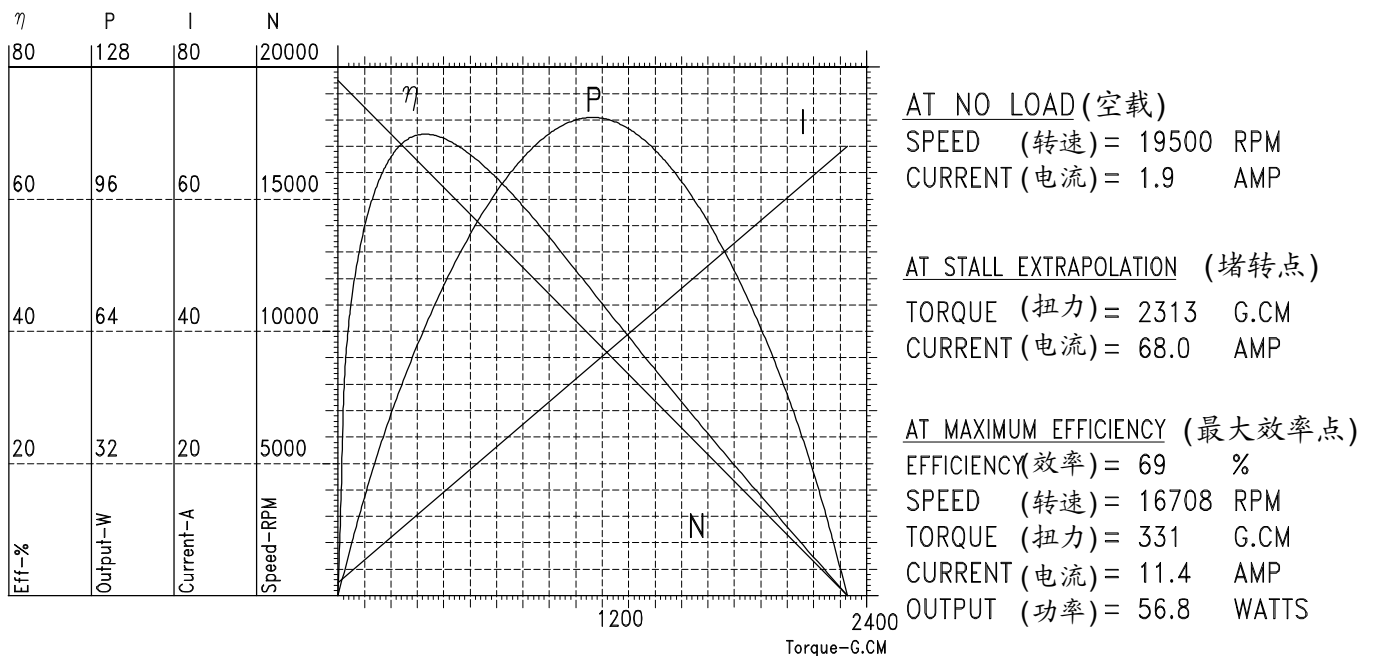
1、Outline Drawing(外形图)



2、Electrical Specification(电气性能规格)

VOLTAGE (电压)	NO LOAD		LOAD TESTING WITH FAN: 29.5x50		
	SPEED	CURRENT	SPEED	CURRENT	TORQUE
	rpm	A	rpm	A	g-cm
7.2V DC CONSTANT	$19500 \pm 12\%$	2.6 A max.	$17200 \pm 10\%$	12.0 A max.	273

3、Performance Curves: (性能曲线)



NOTES: THE CURVES REPRESENT THEORETICAL PERFORMANCE OF THE SAMPLE ONLY CUSTOMER:

PRFPARFD·

RFVIFWFD·

APPROVED: _____