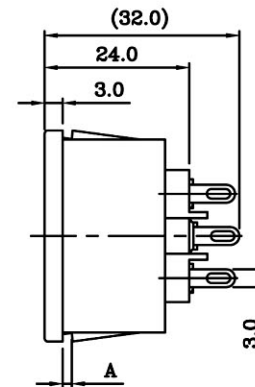
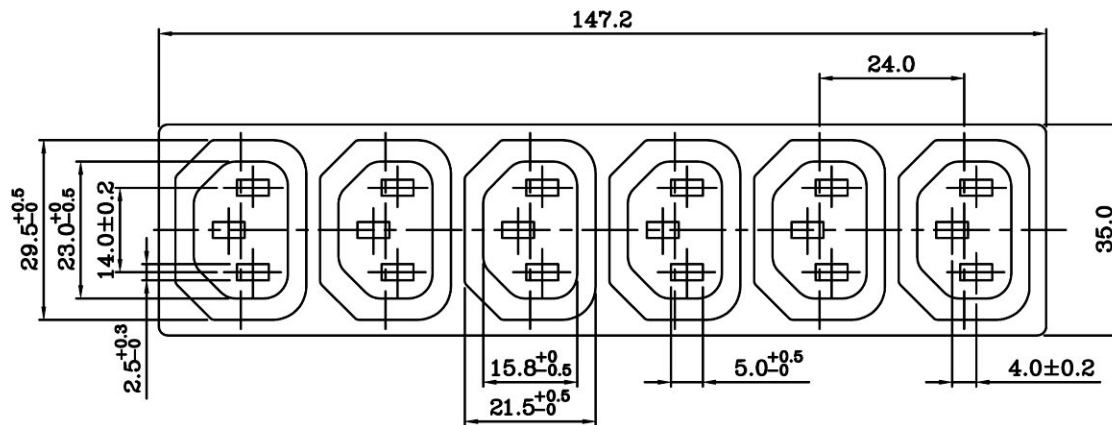


PANEL CUT-OUT

	XX	A
	10	1.0
	12	1.2
	15	1.5
	17	1.7
	20	2.0
	25	2.5



- SPECIFICATION:**
1. Insulation Resistance: Over 100MΩ at 500V DC.
 2. Dielectric strength: 2000V AC 1 Minute.
 3. Body Material: Thermoplastic 94V-2~V-0.
 4. Withdrawing force : 10N~50N.

Rating:AC 10A 250V	
Mark	Safety Regulation
	VDE
	ENEC
	CCC
Rating:AC 15A 250V	
Mark	Safety Regulation
	CULUS

	UNIT	UNIT	QTY	SCALE	TOLERANCE	PRODUCT NO.	R-302G6 (00) 15	REV
	mm	1	4:5	X.XX±0.1 XX.XX±0.2 XXX.XX±0.3				
DRAWN BY	 99.04.21 張育誠	APPROVED BY	 99.04.22 戴銘璋	ID NO	100421A06	INTERIM NO.		C
				DESCRIPTION		NEW NO.		