

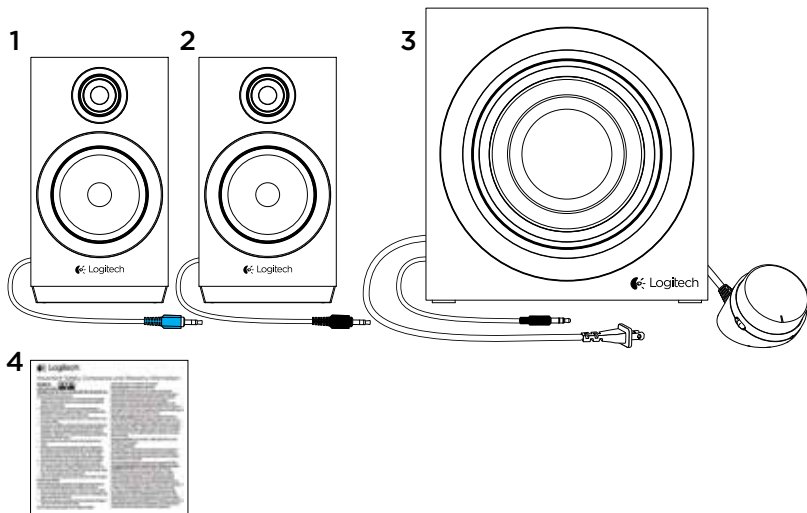


# Logitech® Multimedia Speaker System z333

## Product Manual



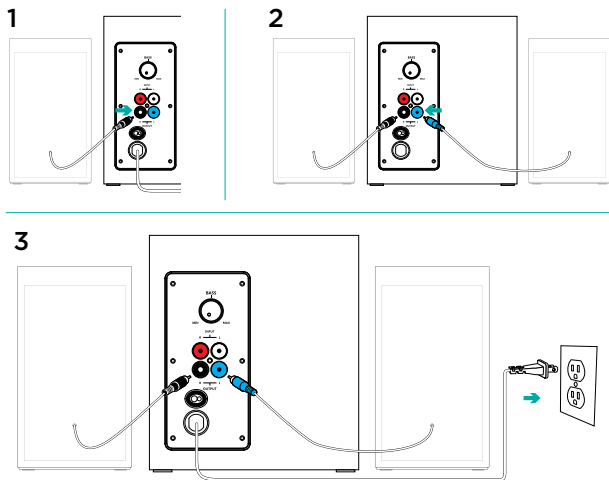
English. . . . . 3

 What's in the box

1. Left Satellite
2. Right satellite

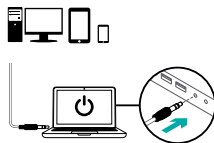
3. Subwoofer
4. User documentation

## Set-up

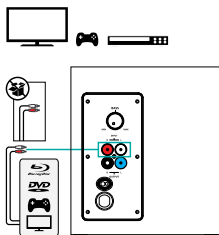


1. Plug the right satellite cable into the black subwoofer jack.
2. Plug the left satellite cable into the blue subwoofer jack.
3. Plug the power cord into an electrical outlet.

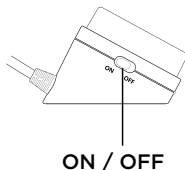
4A



4B

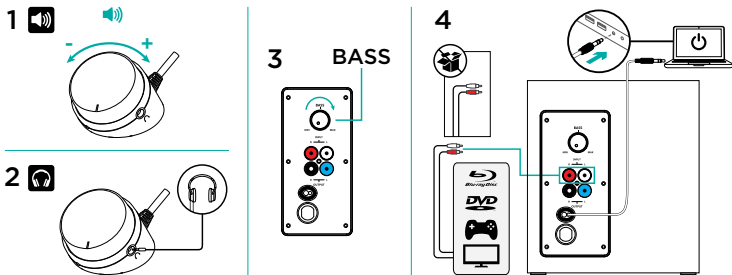


5



4. A. If you have a 3.5mm outlet on your device:
  - Insert the 3.5mm plug from the subwoofer into the audio jack on your device (computer, tablet, smartphone, etc)
- B. If you have on RCA outlet on your device:
  - Insert the RCA jack on the subwoofer (the RCA cable is not included in the box and must be purchased separately)
  - Insert the other end of the RCA cable into the RCA outlet on your device (TV, Gaming Console, etc)
5. Switch ON the ON/OFF button on the wired remote to turn your Multimedia Speaker System z333 ON.

## Features



### 1. ADJUSTING SPEAKER VOLUME

Adjust your Multimedia Speaker System z333 volume with the wheel located on the middle of the wired remote. (VOLUME UP - turn the wheel to the right. VOLUME DOWN - turn the wheel to the left)

### 2. USING HEADPHONES

Most types of analog headphones with a 3.5mm connector can be plugged into the headphone jack on the right end side of the wired remote. When you plug in the headphones, the speaker is muted automatically. With headphones plugged into your Multimedia Speaker System z333, the main control volume is through your audio device (computer, tablet or smartphone, etc). Headphone volume will not be affected by volume adjustment on the wired remote.

### 3. ADJUSTING BASS VOLUME

To adjust the bass level of your Multimedia Speaker System z333, turn the bass control located at the back of your subwoofer clockwise.

### 4. CONNECT TO TWO DEVICES SIMULTANEOUSLY

Connect to two devices at the same (TV and computer for example) through the RCA connector on the back of the subwoofer and the 3.5mm cable on the subwoofer.



[www.logitech.com/support/z333](http://www.logitech.com/support/z333)

© 2014 Logitech. All rights reserved. Logitech, the Logitech logo, and other Logitech marks are owned by Logitech and may be registered. Registered in the U.S. and other countries. All other trademarks are the property of their respective owners. Logitech assumes no responsibility for any errors that may appear in this manual. Information contained herein is subject to change without notice.

621-000412.002