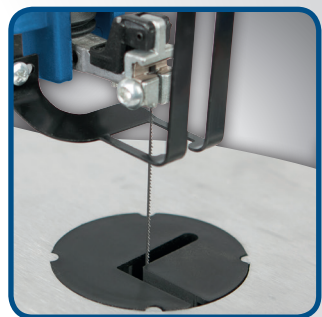


VARIABLE SPEED

406 mm 57 mm

LED LIGHT



SD1600V | 16" SCROLL SAW

AN IDEAL ADDITION TO ANY BENCH TOP WORKSHOP, THIS SCROLL SAW HAS THE RIGHT FEATURES FOR THE BEGINNING AND INTERMEDIATE WOODWORKER TO MAKE INTRICATE CUTS AND PATTERNS.

- Cutting height / depth: 57 / 406 mm
- Saw blade length 127 mm
- Table adjustment +45°
- Variable speed 500 – 1700 rpm
- LED light comes standard
- Accepts pin blades and plain end blades
- Quick release blade tension knob allows quick and easy blade change
- Nearly vibration free, allowing you to work with precision for professional looking results
- Blower keeps the working area free of dust
- Tool storage box

LOGISTICAL DATA

20 Container	380 pcs
40 Container	820 pcs
40 HQ Container	965 pcs

SPECIFICATIONS

Dimensions L x W x H	630 x 295 x 370 mm
Table size L / W	255 x 415 mm
Table adjustment	0° to 45°
Stroke speed	500 – 1700 rpm
Cutting height / depth	57 / 406 mm
Suction connector Ø	35 mm
Weight	12.7 kg
Motor	230 V
Input	120 W
Order No	5901403903
Barcode	4046664037040

Issue 2015-03-30 | Changes reserved