

MARKING

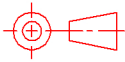
production code EN60062/factory code
Produktionscode EN60062/Fertigungsstätte

NUT

nut M10x1 DIN439, type B
low form, brass
*Mutter M10x1 DIN439, Typ B
niedrige Form, Messing*

MAGNET

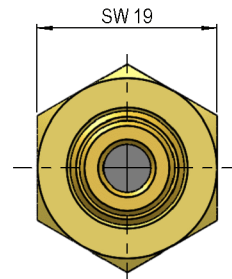
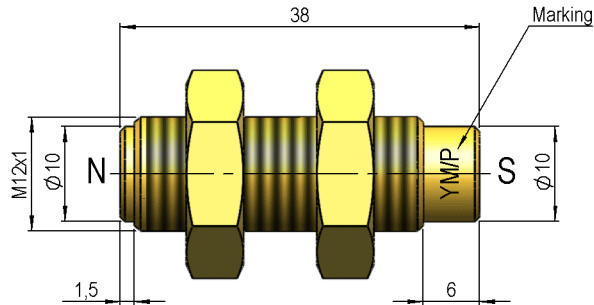
AlNiCo 500 (p/n 4003004003)
magnetized axial
*AlNiCo 500 (Art.-Nr. 4003004003)
axial magnetisiert*



tolerances according to DIN ISO 2768 m

Special Product Data	Conditions	Min	Typ	Max	Unit
Sealing compound		Voltatex CE 12 FW-UL			
Housing material		brass			

Mag. values DIN IEC 60404-8-	Conditions	Min	Typ	Max	Unit
Energy product (B x H) max.		35	39,8		kJ/cu m
Remanence Br		1.120	1.240		mT
Revers. temp. coeff. of Br			-0,02		%/K
Max. operating temperature				450	°C
Magnetic moment	measured with MS150	19,8	22,2		E-6 Vs*cm



MARKING

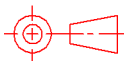
production code EN60062/factory code
Produktionscode EN60062/Fertigungsstätte

NUT

nut M12x1 DIN439, type B
 low form, brass
Mutter M12x1 DIN439, Typ B
niedrige Form, Messing

MAGNET

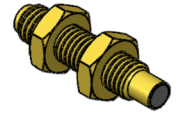
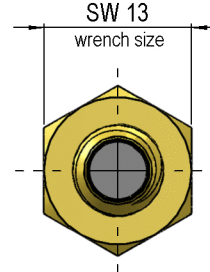
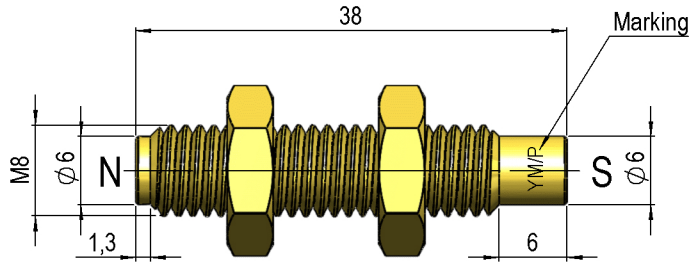
AINiCo 500 (p/n 4003004003)
 magnetized axial
AINiCo 500 (Art.-Nr. 4003004003)
axial magnetisiert



tolerances according to DIN ISO 2768 m

Special Product Data	Conditions	Min	Typ	Max	Unit
Sealing compound		Voltatex CE 12 FW-UL			
Housing material		brass			

Mag. values DIN IEC 60404-8-	Conditions	Min	Typ	Max	Unit
Energy product (B x H) max.		35	39,8		kJ/cu m
Remanence Br		1.120	1.240		mT
Revers. temp. coeff. of Br			-0,02		%/K
Max. operating temperature				450	°C
Magnetic moment	measured with MS150	19,8	22,2		E-6 Vs*cm



MARKING
production code EN60062/factory code
Produktionscode EN60062/Fertigungsstätte

NUT
nut M8 DIN439, type B
low form, brass
*Mutter M8 DIN439, Typ B
niedrige Form, Messing*

MAGNET
AlNiCo 500 (p/n 4003004003)
magnetized axial
*AlNiCo 500 (Art.-Nr. 4003004003)
axial magnetisiert*

tolerances according to DIN ISO 2768 m

Special Product Data	Conditions	Min	Typ	Max	Unit
Sealing compound		Voltatex CE 12 FW-UL			
Housing material		brass			

Mag. values DIN IEC 60404-8-	Conditions	Min	Typ	Max	Unit
Energy product (B x H) max.		35	39,8		kJ/cu m
Remanence Br		1.120	1.240		mT
Revers. temp. coeff. of Br			-0,02		%/K
Max. operating temperature				450	°C
Magnetic moment	measured with MS150	19,8	22,2		E-6 Vs*cm

General data	Conditions	Min	Typ	Max	Unit
Tightening torque	referred to provided screw nuts			6	Nm