

Plug-In Current Transformers



	Plug-In Current Transformers Secondary rated current: 1 A	Plug-In Current Transformers Secondary rated current: 5 A
--	---	---

Short description:

The 855 Series Plug-In Current Transformers are inductive, single-conductor current transformers. Based on the principle of measurement, current transformers of this type are used exclusively in AC networks.

Features:

- Screwless CAGE CLAMP® connection technology
- Several mounting options available
- Vibration- and shock-resistant
- High mechanical retention forces
- High current-carrying capacity
- Continuous overload of 120 % the nominal primary current
- Low-voltage current transformer for max. operating voltages up to 1.2 kV
- Can be used in 690 V power networks
- UL Recognized Components



Description	I _{pN}	I _{sN}	S _N	G	Item No.	Pack. Unit	I _{pN}	I _{sN}	S _N	G	Item No.	Pack. Unit
Plug-In Current Transformers	50 A	1 A	1.25 VA	3	855-301/050-103	1	50 A	5 A	1.25 VA	3	855-305/050-103	1
	60 A	1 A	1.25 VA	1	855-301/060-101	1	60 A	5 A	1.25 VA	1	855-305/060-101	1
	75 A	1 A	2.5 VA	1	855-301/075-201	1	75 A	5 A	2.5 VA	1	855-305/075-201	1
	100 A	1 A	2.5 VA	1	855-301/100-201	1	100 A	5 A	2.5 VA	1	855-305/100-201	1
	150 A	1 A	5 VA	1	855-301/150-501	1	150 A	5 A	5 VA	1	855-305/150-501	1
	200 A	1 A	5 VA	1	855-301/200-501	1	200 A	5 A	5 VA	1	855-305/200-501	1
	250 A	1 A	5 VA	1	855-301/250-501	1	250 A	5 A	5 VA	1	855-305/250-501	1
I _{pN} = Primary rated current	400 A	1 A	10 VA	1	855-301/400-1001	1	400 A	5 A	10 VA	1	855-305/400-1001	1
I _{sN} = Secondary rated current	600 A	1 A	10 VA	1	855-301/600-1001	1	600 A	5 A	10 VA	1	855-305/600-1001	1
S _N = Rated power	400 A	1 A	5 VA	1	855-401/400-501	1	400 A	5 A	5 VA	1	855-405/400-501	1
G = Accuracy class	1000 A	1 A	10 VA	1	855-501/1000-1001	1	1000 A	5 A	10 VA	1	855-505/1000-1001	1

Technical Data

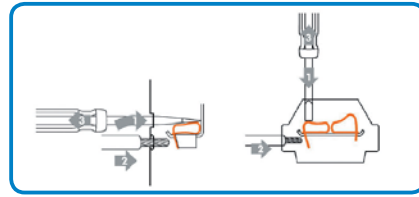
Input:		
Rated continuous thermal current I _{ctH}	1.2 x I _N	1.2 x I _N
Rated short-time thermal current I _{th}	60 x I _N (max. 100 kA), 1 s	60 x I _N (max. 100 kA), 1 s
Max. operating voltage V _{B max.}	1.2 kV _{rms}	1.2 kV _{rms}
Rated frequency	50 Hz ... 60 Hz	50 Hz ... 60 Hz
Overcurrent limiting factor	FS5 or FS10 (type-dependent, see type plate inscription)	FS5 or FS10 (type-dependent, see type plate inscription)
Environmental requirements:		
Ambient operating temperature	-5 °C ... +50 °C	-5 °C ... +50 °C
Storage temperature	-25 °C ... +70 °C	-25 °C ... +70 °C
Max. operating altitude	1000 m	1000 m
Safety and protection:		
Test voltage	6 kV _{rms} AC / 50 Hz / 1 min	6 kV _{rms} AC / 50 Hz / 1 min
Insulation class	E	E
Connection and type of mounting:		
Connection technology	CAGE CLAMP®	CAGE CLAMP®
Cross sections	0.08 mm ² ... 4 mm ² / AWG 28 ... 12	0.08 mm ² ... 4 mm ² / AWG 28 ... 12
Strip lengths	9 ... 10 mm / 0.37 in	9 ... 10 mm / 0.37 in
Standards and approvals:		
Conformity marking	CE	CE
Standards/Specifications	DIN EN 60044-1 (12/2003) VDE 0414-1 (12/2003)	DIN EN 60044-1 (12/2003) VDE 0414-1 (12/2003)
UL (Recognized Components)	E356480	E356480

Accessories	Item No.	Pack. Unit
Carrier rail adapter for plug-in current transformers (for 855-3xx/xxx-xxxx and 855-4xx/xxx-xxxx)	855-9900	1
Quick-mount kit	855-9910	1
Operating tool, with partially insulated shaft, type 2, blade (3.5 x 0.5) mm	210-720	1

855 Series

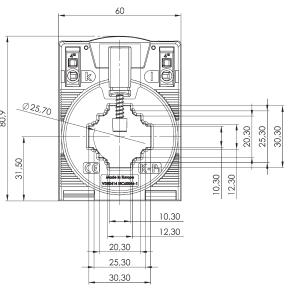
Connection / Connection Assignment

Implementation of the primary winding is designated with "K-P1" and "L-P2." Connections for the secondary winding are designated with the corresponding lower case letters "k-S1" and "l-S2."



Dimensions:

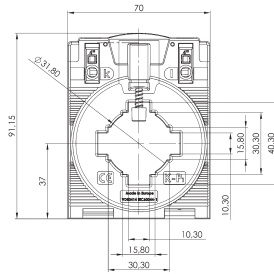
Item No.
855-3xx/xxxx-xxxx



Current bar 1: 30 x 10 mm
Current bar 2: 25 x 12 mm
Current bar 3: 20 x 20 mm
Round cable: 26 mm

Width: 60 mm
Overall height: 80.5 mm
Overall depth: 52 mm

Item No.
855-4xx/xxxx-xxxx

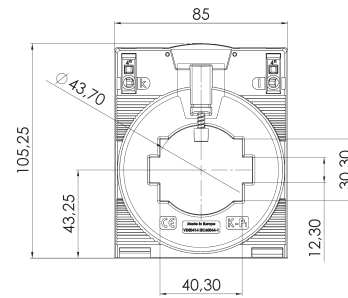


Current bar 1: 40 x 10 mm
Current bar 2: 30 x 15 mm

Round cable: 32 mm

Width: 70 mm
Overall height: 91 mm
Overall depth: 52 mm

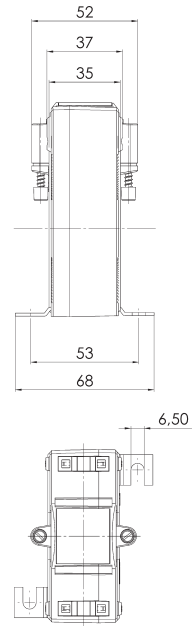
Item No.
855-5xx/xxxx-xxxx



Current bar 1: 50 x 12 mm
Current bar 2: 40 x 30 mm

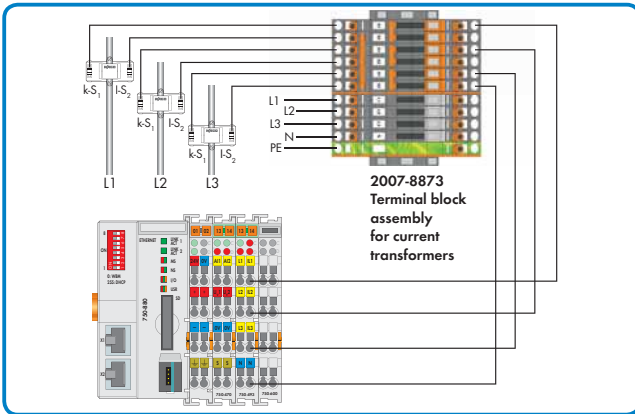
Round cable: 44 mm

Width: 85 mm
Overall height: 105.25 mm
Overall depth: 52 mm

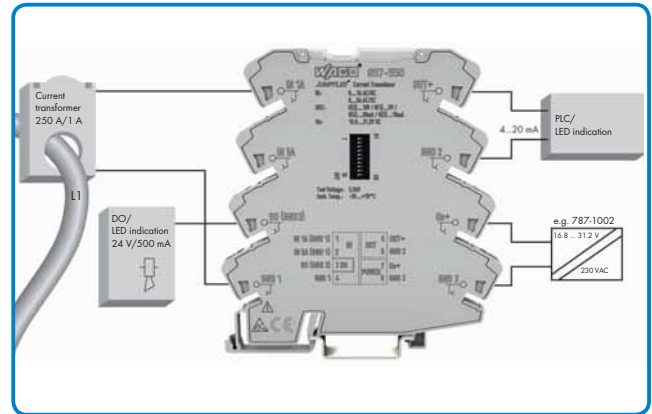


Application examples:

750 Series (3-Phase Power Measurement Module)



857 Series (JUMPFLEX® Current Transducer)



Mounting Options



Mounting on round cable



Mounting on copper current bar



Mounting on carrier rail with carrier rail adapter



Mounting on mounting plate



Quick-mount installation for conductors

Note:

* The carrier rail adapter is only suitable for 855-3xx/xxxx-xxxx and 855-4xx/xxxx-xxxx transformers.