

XCELL XP 65-12

12V 65AH (20 HOUR)



XP 65-12



Physical Specification

Part Number:	XP65-12
Length:	348 ± 2 mm
Width:	167 ± 2 mm
Container Height:	178 ± 2 mm
Total Height (with terminal):	178 ± 2 mm
Approx Weight:	Approx 21.50 kg

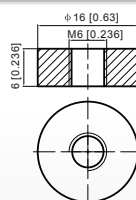
Specifications

	Normal Voltage	12V
	Normal Capacity (20HR)	65AH
Terminal Type	Standard Terminal	F6
	Optional Terminal	-
Container Material	Standard Option	ABS
	Flame Retardant Option (FR)	ABS (UL94:VO)
Rated Capacity	65.0 AH/3.25A	(20hr, 1.80V/cell, 25°C / 77°F)
	61.8 AH/6.18A	(10hr, 1.80V/cell, 25°C / 77°F)
	53.0 AH/10.6A	(5hr, 1.75V/cell, 25°C / 77°F)
	48.3 AH/16.1A	(3hr, 1.75V/cell, 25°C / 77°F)
	37.7 AH/37.7A	(1hr, 1.60V/cell, 25°C / 77°F)
Max Discharge Current	780A (5s)	
Internal Resistance	Approx 7.3mΩ	
Discharge Characteristics	Operating Temp. Range	Discharge: -15 ~ 50°C (5 ~ 122°F) Charge: -15 ~ 50°C (5 ~ 122°F) Storage: -15 ~ 40°C (5 ~ 104°F)
	Nominal Operating Temp. Range	25 ± 3°C (77 ± 5°F)
	Cycle Use	Initial Charging Current less than 19.5A. Voltage 14.4V ~ 15.0V at 25°C (77°F) Temp. Coefficient -30mV/°C
	Standby Use	No limit on Initial Charging Current Voltage 13.5V ~ 13.8V at 25°C (77°F) Temp. Coefficient -20mV/°C
	Capacity affected by Temperature	40°C (104°F) 103% 25°C (77°F) 100% 0°C (32°F) 86%
Design Floating Life at 20°C	10 Years	
Self Discharge	XCELL batteries may be stored for up to 6 months at 25°C(77°F) and then a refresh charge is required. For higher temperatures the time interval will be shorter.	

Dimensions

F6 Terminal

Tin Torque 3,9-5,4 N*m



G 114103

