

## 120-960W Single Output Full Featured DIN Rail Mount Power Supplies

<https://product.tdk.com/en/power/drf>  
[www.emea.lambda.tdk.com/drf](http://www.emea.lambda.tdk.com/drf)



The DRF series provides full featured DIN Rail mount power supplies for industrial and process control applications. The series combines careful thermal design, reliability and compact dimensions with energy saving efficiencies of up to 95%. Conservatively rated electrolytic capacitor temperatures offer improved field life-times of up to 10 years. Available in four power levels, 120W, 240W, 480W and 960W, the series provides 24V outputs with a peak loading capability of 150% for up to four seconds. The models can be operated in parallel, have remote on/off and remote voltage adjustment. For operation in hazardous locations, the /HL option can be selected on the DRF120 to DRF480 models, which includes coating of the circuit boards for added protection.

Features	Benefits
• High Efficiency, up to 95%	• Lowers Operating Costs and Improves Thermal Performance
• 150% Peak Power for Four Seconds	• Operates With Capacitive and Inductive Loads
• Long E-Capacitor Life (Up to 10 Years)	• Improved Field Life
• Low Off-Load Power Consumption	• Saves Energy
• Remote On/Off and Remote Output Control	• Supports Intelligent System Control
• Hazardous Location Option (/HL)	• Certified For Use in Explosive Atmospheres

Model Selector						
Model	Output Voltage (V)	Adjustment Range (V)	Max Current (A)	Max Power (W)	Peak Output Current (1) (A)	Peak Output Power (1) (W)
DRF120-24-1	24	24 - 28	5	120	7.5	180
DRF240-24-1	24	24 - 28	10	240	15	360
DRF480-24-1	24	24 - 28	20	480	30	720
DRF960-24-1	24	24 - 28	40	960	60	1440

DRF	240	-24	-1	/HL
Series	120, 240, 480, 960W	24V Output	Single phase	<b>Blank</b> No ATEX, IEC EX Certification or pcb coating <b>/HL</b> ATEX, IEC EX Certification (Including pcb coating). Not available for DRF960.

Related Products		
Type	Part Number(s)	Description
Buffer Module	<a href="#">DBM20</a>	24V 20A Hold-Up DIN Rail Module
Redundancy Module	<a href="#">DRM40</a>	20A to 40A DIN Rail Redundancy Module
Low power DIN rail power supplies	<a href="#">DRB15, 30, 50, 100</a>	15 to 100W AC-DC DIN rail power supplies
Mid to high power DIN rail power supplies	<a href="#">DRB120, 240, 480</a>	120 to 480W AC-DC DIN rail power supplies
Mid to high power 3-phase DIN rail power supplies	<a href="#">DRB-3</a>	3- phase AC-DC DIN rail power supplies
DIN rail mount filters	<a href="#">RSMN</a>	3A to 30A 250Vac 2 stage filters with pulse attenuation
DIN rail mount filters	<a href="#">RSEV</a>	6A to 30A 250Vac 2 stage filters
RSEV DIN rail mounting kit	<a href="#">DIN-RSEV</a>	RSEV DIN rail mounting kit

Specifications					
Model		DRF120	DRF240	DRF480	DRF960
<b>Input</b>					
AC Input Voltage Range	Vac	85 - 264			180 - 264
Input Frequency	Hz	47 - 63			
DC Input Voltage Range (2)	V	125 - 370			-
Input Current (115 / 230Vac)	A	1.2 / 0.6	2.4 / 1.2	4.7 / 2.5	- / 4.5
Inrush Current (typ) (Cold Start)	A	20			
Leakage Current (240Vac, 60Hz)	mA	<1			
Power Factor (115 / 230Vac)	-	0.98 / 0.95	0.98 / 0.95	0.98 / 0.92	- / 0.98
Harmonic Compliance	-	Meets EN61000-3-2 Class A			
Standby Power Consumption (3)	W	<0.5	<0.5	<0.75	<1
Hold Up Time at 230Vac Input	ms	>20			>10
Efficiency (115 / 230Vac)	%	89 / 91	92.5 / 94	92.5 / 94	- / 95
Average Efficiency (230Vac) (4)	%	88.6	92.6	92	-
Conducted & Radiated EMI Immunity	-	EN55032-B See immunity table			
Safety Certifications and Markings	-	UL508 Listed, IEC/UL/CSA/EN62368-1 (DRF120-480 only), IEC/UL/CSA/EN61010-1 (DRF960 only), 60950-1, CE Mark and UKCA Mark /HL option: ATEX, IEC Ex. Class 1 Div 2, Group A, B, C, D (not available for DRF960)			

Immunity					
Test	Standard	Test Level	Criteria	Notes	
ESD	EN61000-4-2	4kV contact 8kV air discharge	A	See full immunity reports on website	
Radiated Susceptibility	EN61000-4-3	10V/m: 80MHz to 1GHz 3V/m 1.4GHz to 2GHz 1V/m 2GHz to 2.7GHz	A		
Electrical Fast Transient Burst	EN61000-4-4	Input 4kV 5kHz Output 2kV 5kHz Signal contact 2kV 5kHz	A		
Surge	EN61000-4-5	Input symmetrical (L-L) 2kV Input asymmetrical (L-PE) 4kV Output symmetrical (L-L) 0.5kV Output asymmetrical (L-PE) 1kV	A		
Conducted Susceptibility	EN61000-4-6	10V	A		
Magnetic fields	EN61000-4-8	30A/m	A		
Voltage Dips and Input Interruptions	EN61000-4-11	230Vac at 30%, 50Hz	A		
		230Vac at 60%, 50Hz	A		
		230Vac at 100%, 50Hz	A		
		230Vac at 100%, 50Hz	C		
SEMI F47 Line Dip	SEMI F47	-	-	>200Vac input, not applicable for the DRF960 model	

Specifications		DRF120-24-1	DRF240-24-1	DRF480-24-1	DRF960-24-1
<b>Output</b>					
Line Regulation	mV	<96			
Load Regulation	mV	<240			
Ripple & Noise	mV	<240			
Temperature Coefficient	%/°C	<0.02			
Minimum Load	-	No minimum load required			
Over Current Protection	%	>101 of peak current rating. Shutdown after 4 seconds			
Over Voltage Protection	V	30 - 35.5			31.5 - 34
Remote Voltage Adjustment	-	5 - 6V external voltage adjusts the output from 24 - 28V			
Remote Sense	-	None			
Remote On/Off	-	When signal is low, the output is active			
DC OK Relay	-	Relay contact 30V/1A (closed if Vout > 80% of rated output voltage)			
LED Indicators	-	Green LED = DC is OK (>80% Nom). Red LED = Peak Load Operation			
Parallel Operation	-	Droop Mode. Refer to instruction manual			
<b>Environmental</b>					
Operating Temperature	°C	-25 to +70. Start up at -40. Derate linearly to 75% load above 60 (50 for the DRF960)			
Storage Temperature	°C	-40 to +85			
Humidity (non condensing)	%RH	5-95 (Operating & Storage)			
Cooling	-	Convection			
Altitude	m	3,000			
Withstand Voltage (For 1 minute)	Vac/Vdc	Input to Output 3,000Vac, Input to Ground 1,500Vac, Output to Ground 500Vdc (DRF960: 500Vac)			
Isolation Resistance	MΩ	>100 (500Vdc) at 25°C & 70%RH			
Vibration (Non operating)	-	10-55Hz (sweep for 1 min.): 19.6m/s <sup>2</sup> constant, X,Y,Z axis 1 hour each			
Shock	-	<196m/s <sup>2</sup>			
<b>Other</b>					
Weight (Typ)	g	600	900	1300	1735
Size (WxHxD)	mm	36.5 x 123.4 x 115	49 x 123.4 x 115	82 x 123.4 x 115	110 x 123.4 x 139
Size (WxHxD)	Inches	1.44 x 4.86 x 4.53	1.93 x 4.86 x 4.53	3.23 x 4.86 x 4.53	4.33 x 4.86 x 5.47
Case Material	-	Metal			
DIN Rail Type	-	Suitable for mounting on TS-35/7.5 or TS-35/15 DIN Rails			
MTBF - JEITA (RCR-9102B)*	Hours	140,001	123,911	112,108	1,103,504**
Warranty	Years	5			

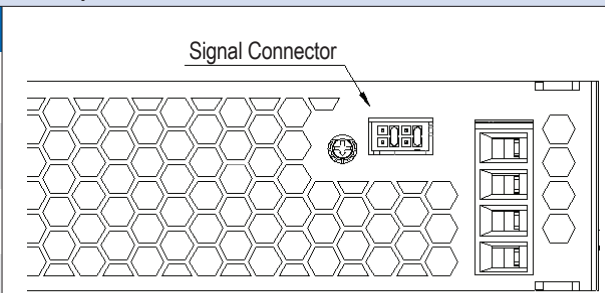
**Notes**

See website for detailed specifications, test methods and installation manual

\* The JEITA RCR-9102B calculation method produces figures significantly lower than Telcordia. \*\* DRF960 calculated to IEC61709.

- (1) Operating period at peak output current is 4 sec, max duty cycle <35% & < rated output power
- (2) Safety certified for AC input only
- (3) Utilizing remote on/off function
- (4) Measured at 25%, 50%, 75% and 100% load conditions

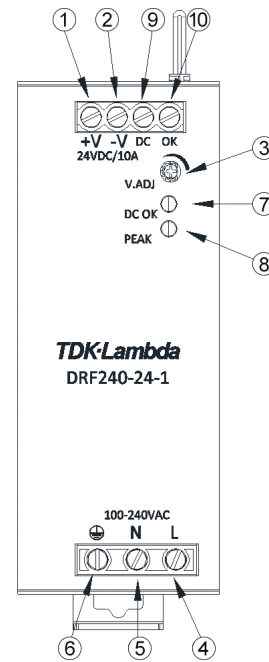
Signal Connector Pin Assignment (DRF120 model shown)		
PIN	Function	Detail
1	CB	For parallel operation cut the link between pins 1 & 2 for droop mode current share
2	CB-COM	
3	N/C	No connection
4	N/C	
5	CNT+	Remote ON/OFF control, when CNT+ is pulled to TTL low the power supply turns ON, otherwise it turns OFF
6	CNT-	
7	PV	Programming voltage range 5-6V presets the output to 24-28V
8	COMM	



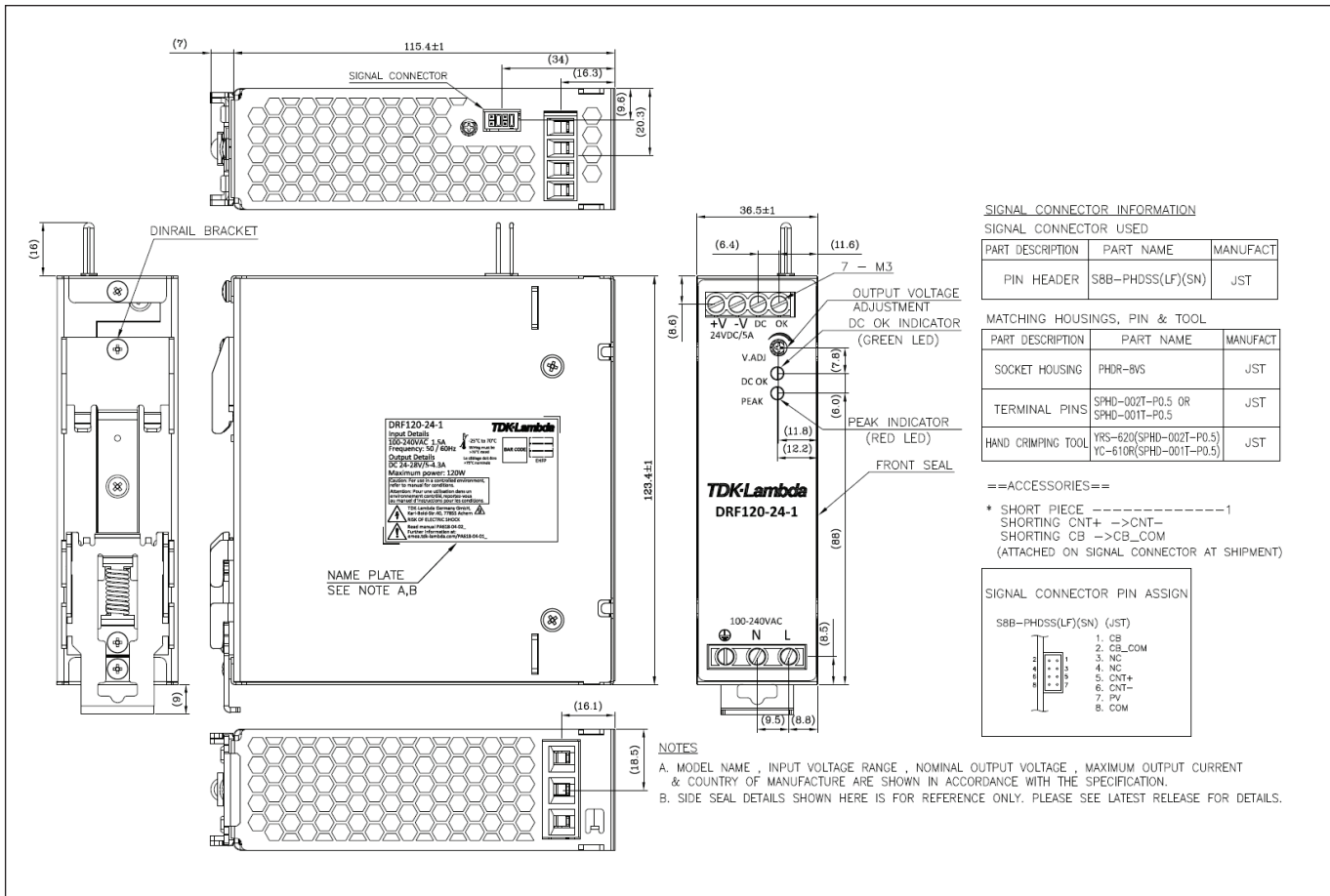
Signal Connector: please refer to instruction manual. Potentiometer on top of unit is for factory settings only. Please do not adjust.

**Front Panel View and Connections (DRF240 model shown)**

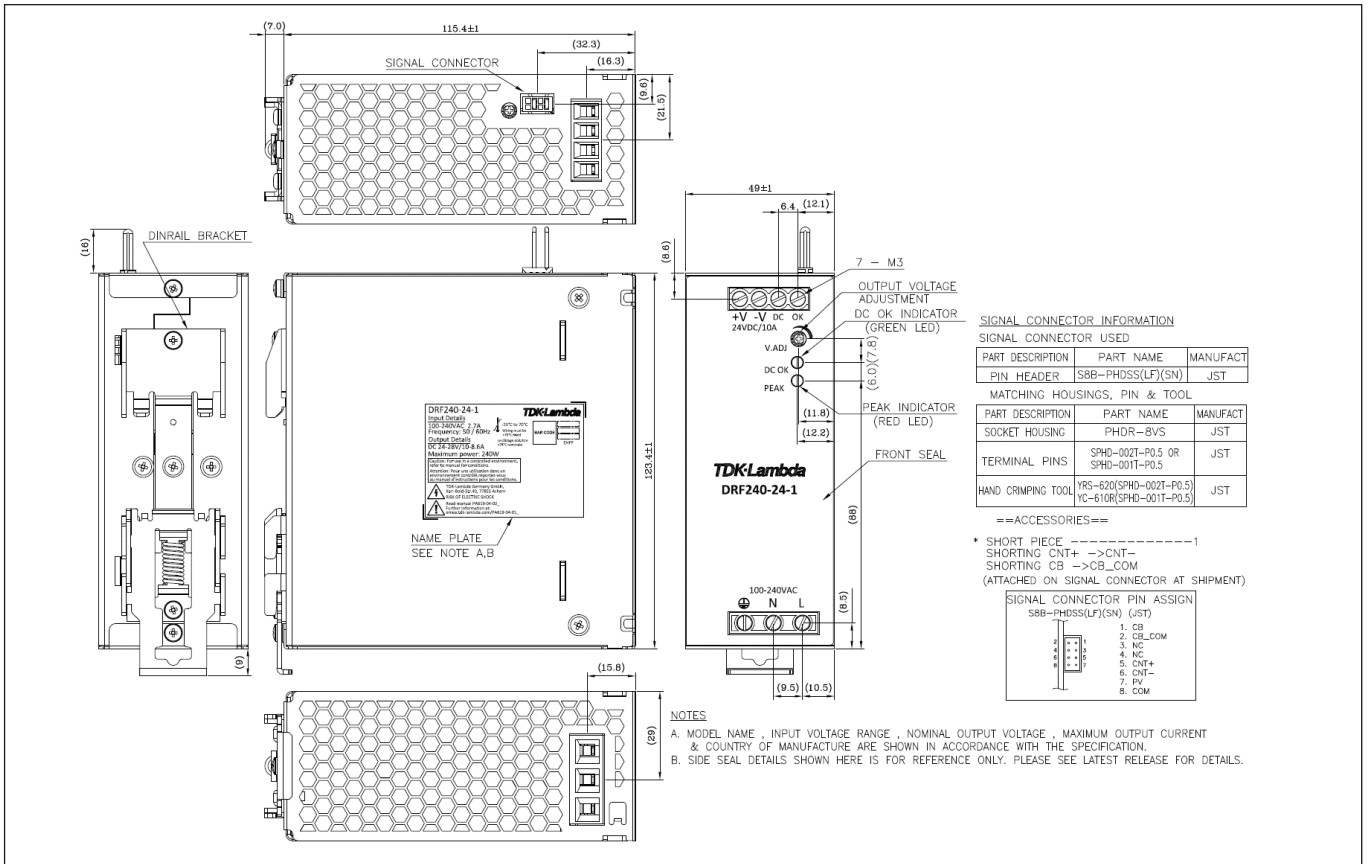
Terminal	Connection
1	+V: +Output terminal
2	-V: - Output terminal
3	V.ADJ: Output voltage adjust trimmer The output voltage rises when trimmer is turned clockwise.
4	L: AC Input terminal. Live line (fuse in line)
5	N: AC Input terminal. Neutral line
6	⏏: Protective Earth Connect to safety ground of apparatus or equipment.
7	DC OK : Green LED lights when Output Voltage on and within specification
8	PEAK : Red LED lights when Output Current peaks
9	DC OK: Relay contact
10	DC OK : Relay contact



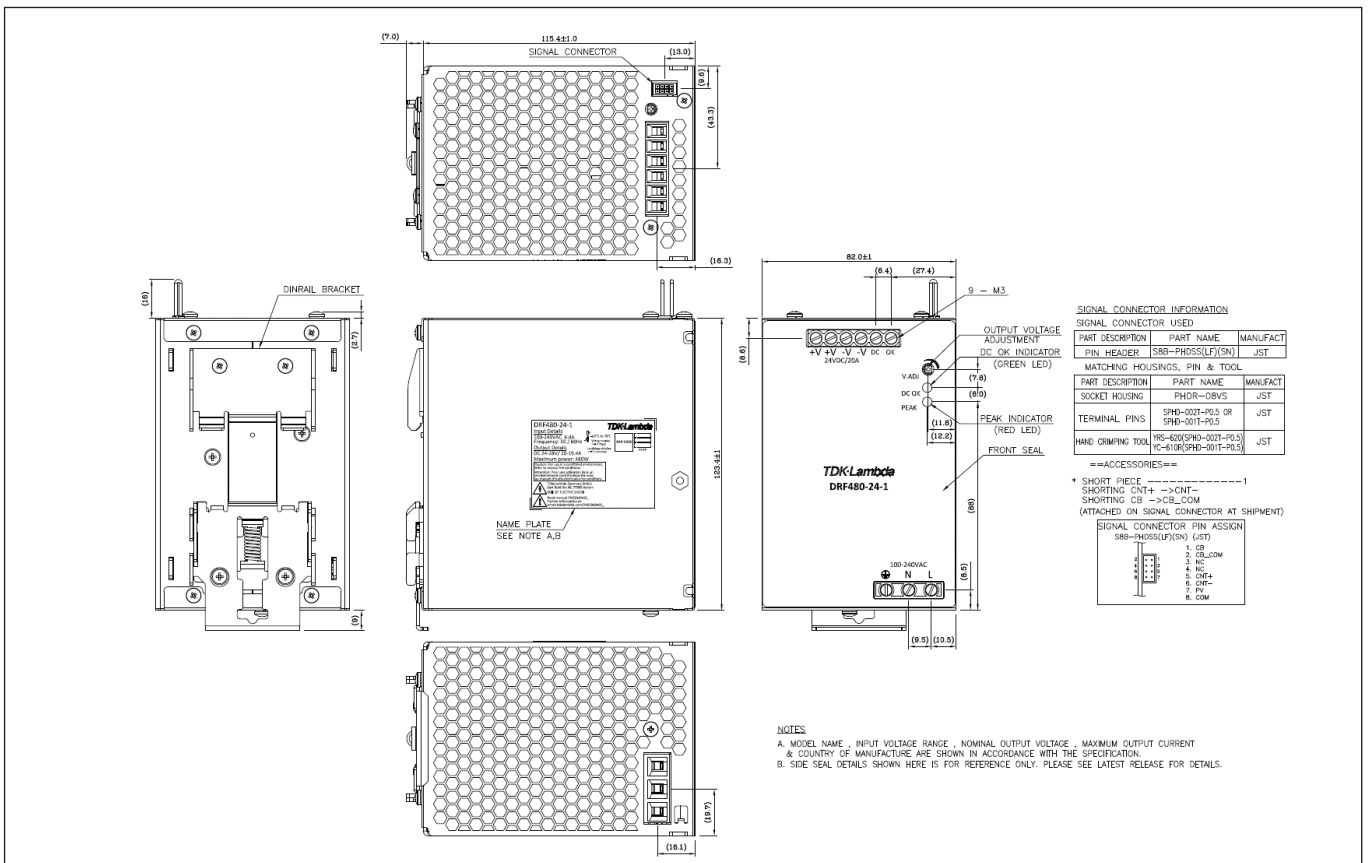
**DRF120 Outline Drawing**



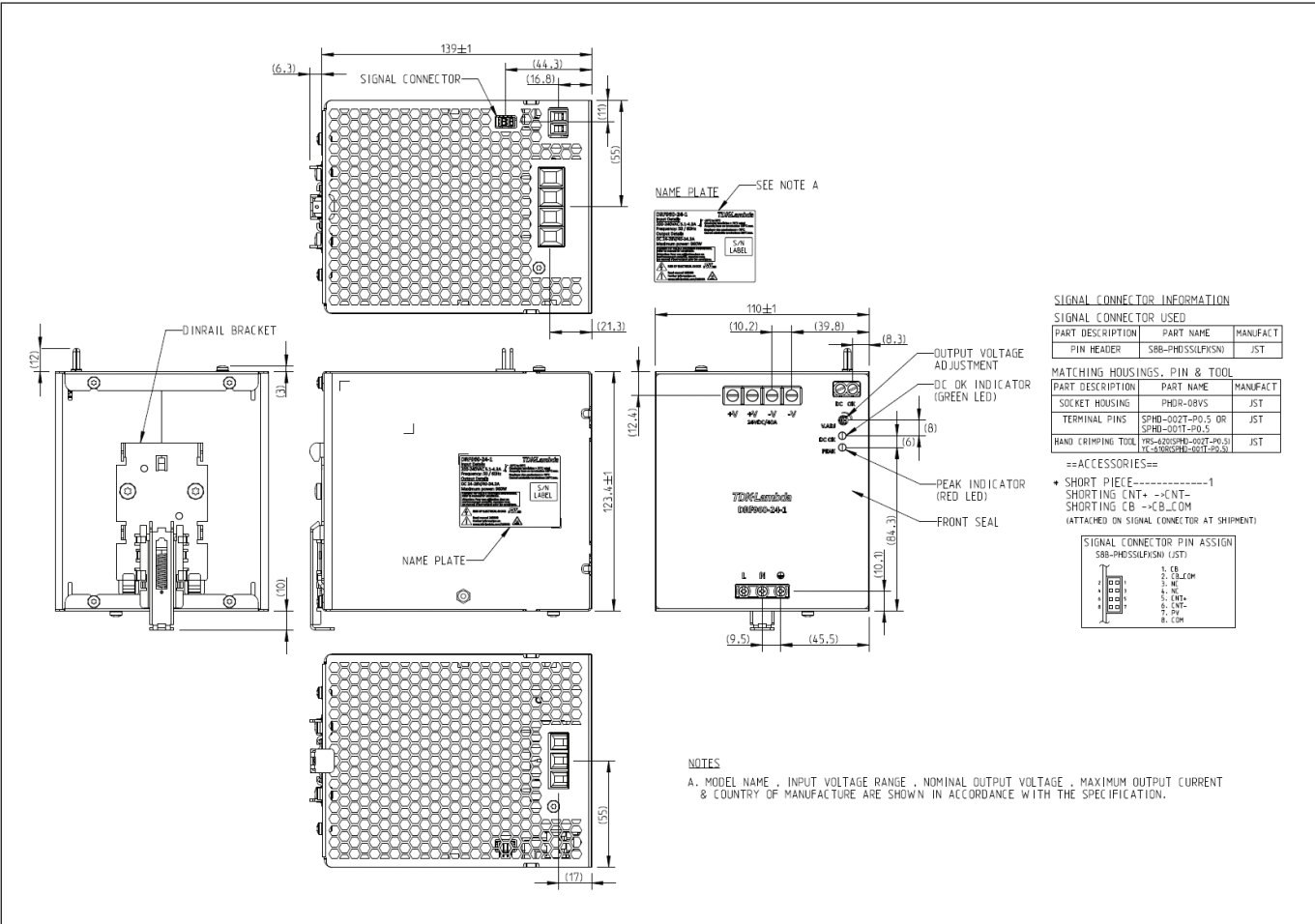
DRF240 Outline Drawing



DRF480 Outline Drawing



**DRF960 Outline Drawing**





## TDK-Lambda France SAS

Tel: +33 1 60 12 71 65  
france@fr.tdk-lambda.com  
www.emea.lambda.tdk.com/fr



## Italy Sales Office

Tel: +39 02 61 29 38 63  
info.italia@it.tdk-lambda.com  
www.emea.lambda.tdk.com/it



## Netherlands

info@nl.tdk-lambda.com  
www.emea.lambda.tdk.com/nl



## TDK-Lambda Germany GmbH

Tel: +49 7841 666 0  
info@de.tdk-lambda.com  
www.emea.lambda.tdk.com/de



## Austria Sales Office

Tel: +43 2256 655 84  
info@at.tdk-lambda.com  
www.emea.lambda.tdk.com/at



## Switzerland Sales Office

Tel: +41 44 850 53 53  
info@ch.tdk-lambda.com  
www.emea.lambda.tdk.com/ch



## Nordic Sales Office

Tel: +45 8853 8086  
info@dk.tdk-lambda.com  
www.emea.lambda.tdk.com/dk



## TDK-Lambda UK Ltd.

Tel: +44 (0) 12 71 85 66 66  
info@uk.tdk-lambda.com  
www.emea.lambda.tdk.com/uk



## TDK-Lambda Ltd.

Tel: +9 723 902 4333  
info@tdk-lambda.co.il  
www.emea.lambda.tdk.com/il



## C.I.S.

### Commercial Support:

Tel: +7 (495) 665 2627

### Technical Support:

Tel: +7 (812) 658 0463  
info@tdk-lambda.ru  
www.emea.lambda.tdk.com/ru



## TDK-Lambda Americas

Tel: +1 800-LAMBDA-4 or 1-800-526-2324  
powersolutions@us.tdk-lambda.com  
www.us.lambda.tdk.com



## TDK Electronics do Brasil Ltda

Tel: +55 11 3289-9599  
sales.br@tdk-electronics.tdk.com  
www.tdk-electronics.tdk.com/en



## TDK-Lambda Corporation

Tel: +81-3-6778-1113  
www.jp.lambda.tdk.com



## TDK-Lambda (China) Electronics Co. Ltd.

Tel: +86 21 6485-0777  
powersolutions@cn.tdk-lambda.com  
www.lambda.tdk.com.cn



## TDK-Lambda Singapore Pte Ltd.

Tel: +65 6251 7211  
tts.mkt@sg.tdk-lambda.com  
www.sg.lambda.tdk.com



## TDK India Private Limited, Power Supply Division

Tel: +91 80 4039-0660  
mathew.philip@in.tdk-lambda.com  
www.sg.lambda.tdk.com

