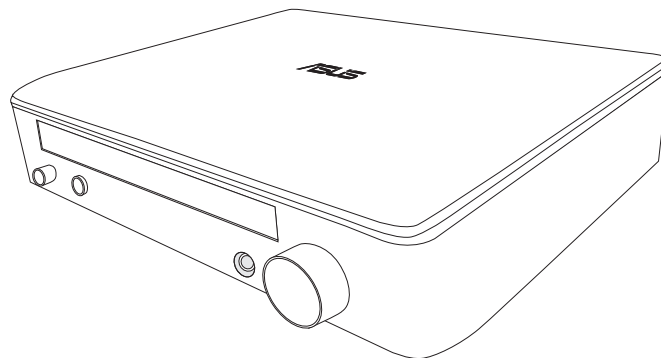




# **SBW-S1 PRO**

External USB DVD / Blu-ray Writer With Sound Card



## **User Guide**

E10236

First Edition

April 2015

**Copyright © 2015 ASUSTeK Computer Inc. All Rights Reserved.**

No part of this manual, including the products and software described in it, may be reproduced, transmitted, transcribed, stored in a retrieval system, or translated into any language in any form or by any means, except documentation kept by the purchaser for backup purposes, without the express written permission of ASUSTeK Computer Inc. ("ASUS").

Product warranty or service will not be extended if: (1) the product is repaired, modified or altered, unless such repair, modification or alteration is authorized in writing by ASUS; or (2) the serial number of the product is defaced or missing.

ASUS PROVIDES THIS MANUAL "AS IS" WITHOUT WARRANTY OF ANY KIND, EITHER EXPRESS OR IMPLIED, INCLUDING BUT NOT LIMITED TO THE IMPLIED WARRANTIES OR CONDITIONS OF MERCHANTABILITY OR FITNESS FOR A PARTICULAR PURPOSE. IN NO EVENT SHALL ASUS, ITS DIRECTORS, OFFICERS, EMPLOYEES OR AGENTS BE LIABLE FOR ANY INDIRECT, SPECIAL, INCIDENTAL, OR CONSEQUENTIAL DAMAGES (INCLUDING DAMAGES FOR LOSS OF PROFITS, LOSS OF BUSINESS, LOSS OF USE OR DATA, INTERRUPTION OF BUSINESS AND THE LIKE), EVEN IF ASUS HAS BEEN ADVISED OF THE POSSIBILITY OF SUCH DAMAGES ARISING FROM ANY DEFECT OR ERROR IN THIS MANUAL OR PRODUCT.

SPECIFICATIONS AND INFORMATION CONTAINED IN THIS MANUAL ARE FURNISHED FOR INFORMATIONAL USE ONLY, AND ARE SUBJECT TO CHANGE AT ANY TIME WITHOUT NOTICE, AND SHOULD NOT BE CONSTRUED AS A COMMITMENT BY ASUS. ASUS ASSUMES NO RESPONSIBILITY OR LIABILITY FOR ANY ERRORS OR INACCURACIES THAT MAY APPEAR IN THIS MANUAL, INCLUDING THE PRODUCTS AND SOFTWARE DESCRIBED IN IT.

Products and corporate names appearing in this manual may or may not be registered trademarks or copyrights of their respective companies, and are used only for identification or explanation and to the owners' benefit, without intent to infringe.

# Contents

## 1. Introduction

1.1	Overview.....	4
1.2	Package contents.....	4
1.3	System requirements.....	4
1.4	Specifications summary .....	5
1.5	Getting to know your device .....	6

## 2. Setting up your device

Step 1:	Connecting to your computer .....	7
Step 2:	Installing the driver on Windows® OS.....	7
Step 3:	Connecting output devices.....	8
	A. Connecting stereo headphones .....	8
	B. Connecting powered analog speaker systems.....	8
	C. Connecting 7.1 or 5.1-channel speakers.....	8
Step 4:	Configuring the audio settings.....	9
	On Windows® OS .....	9
	On Mac OS .....	11

## 3. Using your device

3.1	Installing CyberLink Media Suite on Windows® OS .....	13
3.2	Playing an audio or video disc on Windows® OS.....	14
	Remote-control your playback using PowerDVD Remote FREE .....	14
3.3	Burning files to disc on Windows® OS .....	15
3.4	Playing a disk and burning files on Mac OS .....	16



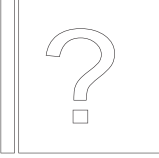
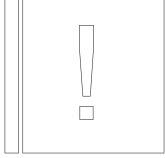
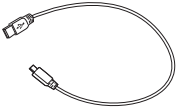
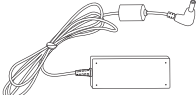
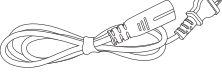
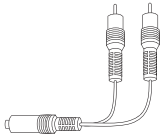
## 4. Troubleshooting

# 1. Introduction

## 1.1 Overview

The ASUS SBW-S1 *PRO* is the world's first optical drive to have a built-in sound card that provides 7.1-channel audio output and a headphone amplifier. It delivers clear and precise sound for those who seek truly immersive audio and video entertainment experiences.

## 1.2 Package contents

 <b>Main drive</b>	 <b>Driver CD</b>	 <b>Quick Start Guide</b>	 <b>Safety Notice</b>
 <b>USB 2.0 cable</b>	 <b>Adapter</b>	 <b>Power cord*</b>	 <b>Y-splitter audio cable</b>

\* Type and quantity may vary regionally.

---

**NOTE:** If any of the items is damaged or missing, contact your retailer.

---

## 1.3 System requirements

To ensure a successful installation of the ASUS SBW-S1 *PRO*, make sure that your computer meets the following requirements:

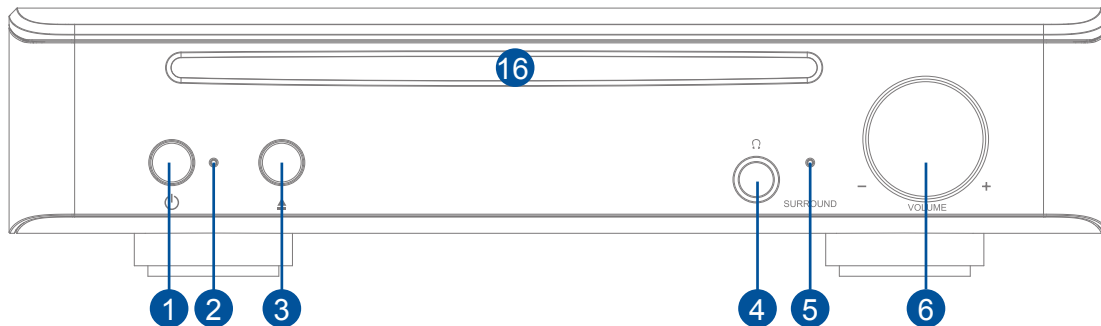
- USB 2.0 port or above
- CPU: Intel® Core™ 2 Duo E6750 (2.66GHz) or above
- Memory: 2GB or more is recommended
- Graphics Card: Intel® HD Graphics, AMD Radeon™ HD 5000, NVIDIA GeForce® 400 series or above
- Use HDCP Compatible display and VGA card to High Definition digital output
- Windows® 8.1/ Windows® 8/ Windows® 7
- MAC OS X 10.6 or above
- High quality headphones or powered analog speakers

## 1.4 Specifications summary

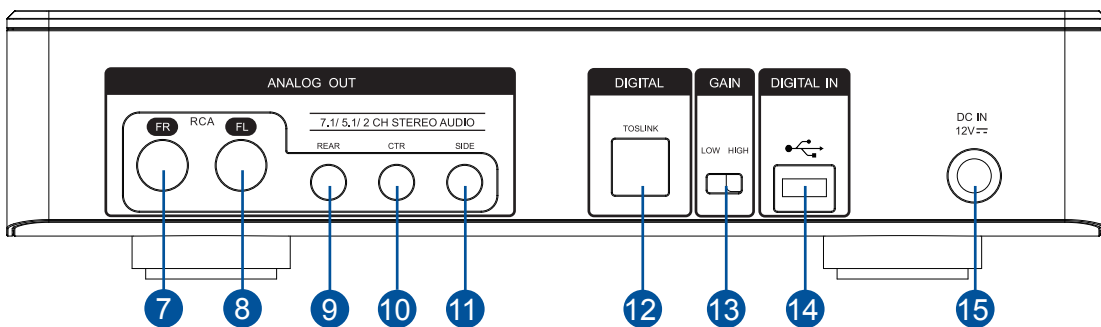
General Specification	
READ	CD-ROM : 24X
	DVD-ROM (SL/DL) : 8X
	BD-ROM (SL/DL) : 6X
	CD-R : 24X
	CD-RW : 24X
	DVD-R (SL/DL) : 8X
	DVD-RW : 8X
	DVD+R (SL/DL) : 8X
	DVD+RW : 8X
	DVD-RAM : 5X
	BD-R (SL/DL) : 6X
	BD-R (TL/QL) : 4X
	BD-RE (SL/DL) : 6X
	BD-RE (TL) : 2X
	CD-Video : 10X
	DVD-Video : 3X
BD-Movie : 2X	
WRITE	CD-R : 24X
	CD-RW : 16X
	DVD-R : 8X
	DVD-R DL : 6X
	DVD-RW : 6X
	DVD+R : 8X
	DVD+R DL : 6X
	DVD+RW : 8X
	DVD-RAM : 5X
	BD-R (SL) : 6X
	BD-R (DL) : 2X
	BD-R (TL/QL) : 2X
	BD-RE (SL/DL) : 2X
BD-RE (TL) : 2X	
Audio Performance	
Output Signal-to-Noise Ratio (A-Weighted)	up to 114dB
Output Total Harmonic Distortion + Noise at 1kHz (A-Weighted):	up to 0.0005623% (-105dB)
Frequency Response (-3dB, 24-bit/192kHz format):	10Hz to 48kHz
Output Full-Scale Voltage	2 Vrms (5.65 Vp-p) for line out, 7 Vrms (19.8 Vp-p) for headphone out
Main Chipset	
Audio Processor	Cmedia 6631A High-Performance Sound Processor
D-A Converter of Digital Sources	Cirrus CS4398 x1
Sample Rate and Resolution	
Analog Playback Sample Rate and Resolution	44.1/48/96/192kHz @ 16/24bit
S/PDIF Digital Output	44.1/48/96/192kHz @ 16/24bit
ASIO 2.2 Driver Support	44.1/48/96/192kHz @ 16/24bit
Others	
Interface	USB 2.0
Dimensions	210 x 168 x 50 mm
Weight	850g

## 1.5 Getting to know your device

### Front view



### Rear view

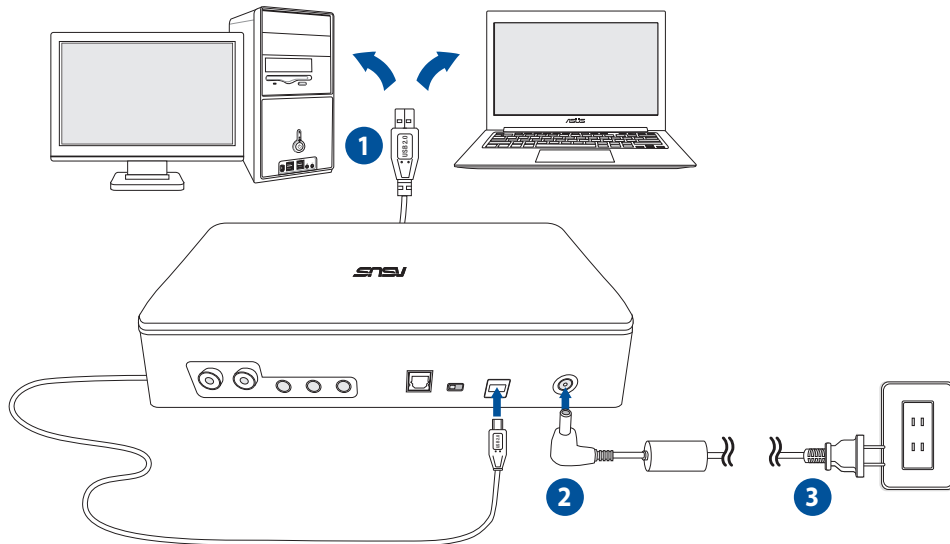


No.	Items	Description
1	Power on/off button	Press the button to switch on/off the device.
2	Power indicator	The LED will light up when powered on.
3	Eject button	Press the button to eject the optical disc.
4	Headphone out port	Connect your headphone to this port.
5	Virtual surround indicator	The LED will light up when virtual surround is on.
6	Volume and virtual surround control	Rotate to adjust the playback volume. Press to switch on/off virtual surround.
7	Front (R) out port	For 2/5.1/7.1 channel speaker systems, connects to the front right input on the powered speakers.
8	Front (L) out port	For 2/5.1/7.1 channel speaker systems, connects to the front left input on the powered speakers.
9	Rear out port	Connects to the rear surround input on 4/5.1/7.1 powered analog speakers.
10	Center/ subwoofer out port	Connects to the center/subwoofer input on 5.1/7.1 powered analog speakers.
11	Side surround out port	Connects to the side surround channel input on 7.1 powered analog speakers.
12	Toslink out port	Connects to an external digital decoder or digital speaker systems, Home Theater systems, AV receivers.
13	Gain switch	Pre-set low gain, you can switch to high gain when using high impedance headphone.
14	USB port	Connects to your computer using a USB 2.0 cable.
15	DC in	Connects to the adapter.
16	Optical drive bezel	Insert an optical disc here.

## 2. Setting up your device

### Step 1: Connecting to your computer

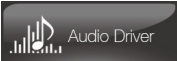
1. Connect the type A USB connector of the bundled USB 2.0 cable to your computer, and the Micro-B connector to the optical drive.
2. Connect the adapter to the main drive.
3. Connect one end of the power cord to the adapter and plug the other end into a wall socket.



### Step 2: Installing the driver on Windows® OS

After connecting the drive to your computer, you need to install the device driver that enables the drive to work with Windows® operating system.

To install the driver on your computer:

1. Power on your device.
2. Insert the bundled driver CD into the optical drive bezel.
3. On the AutoPlay window, click **Run setup.exe**.
3. On the next screen, click  and follow the on-screen instructions to complete the installation.
4. After the installation is complete, restart your computer.

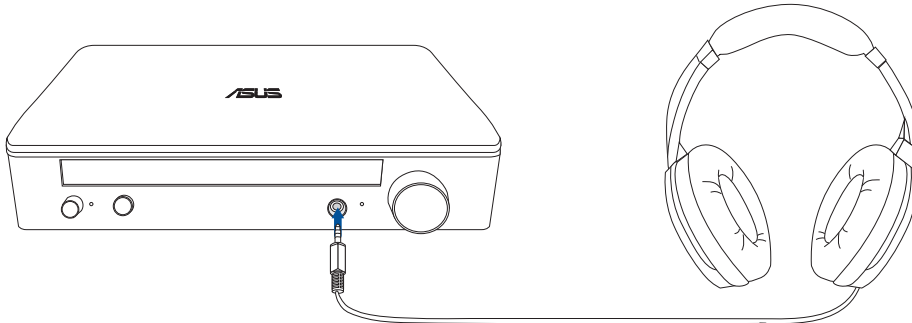
#### NOTES:

- The driver works only when you connect SBW-S1 PRO to a desktop PC or notebook PC.
- The version and contents of the support CD are subject to change without notice.
- The driver is for Windows® operating system only. Driver installation is not required for Mac OS.

### Step 3: Connecting output devices

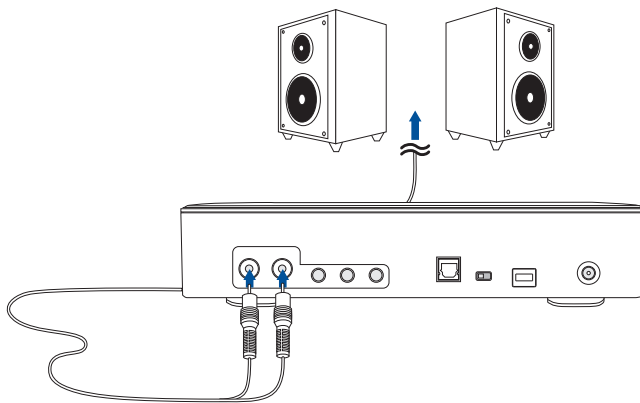
There are three options to connect output devices.

#### A. Connecting stereo headphones



#### B. Connecting powered analog speaker systems

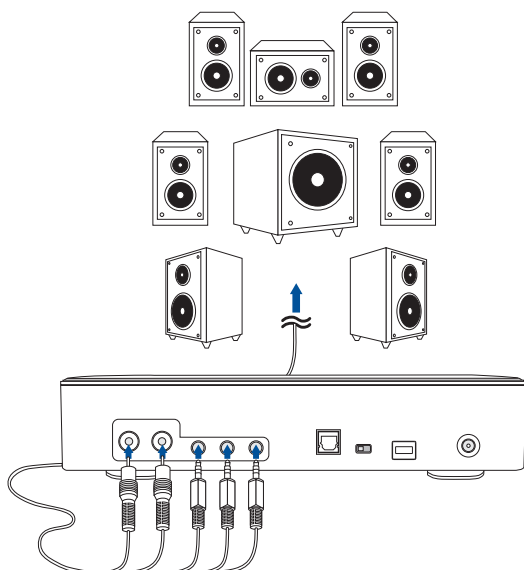
Connecting 2-channel speakers



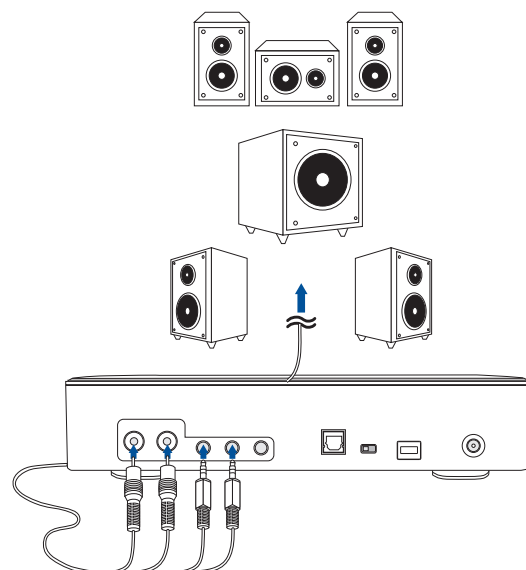
**NOTE:** You can use the bundled Y-splitter cable if needed.

#### C. Connecting 7.1 or 5.1-channel speakers

7.1-channel speakers



5.1-channel speakers



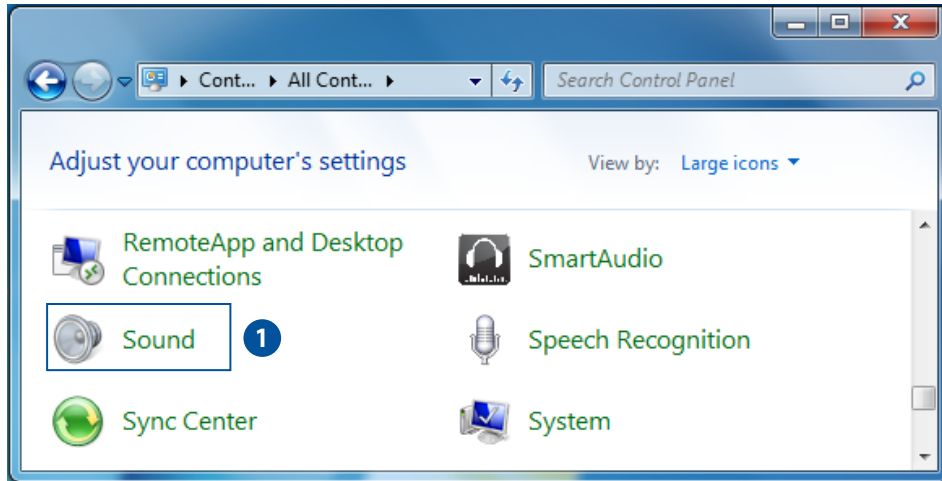


## Step 4: Configuring the audio settings

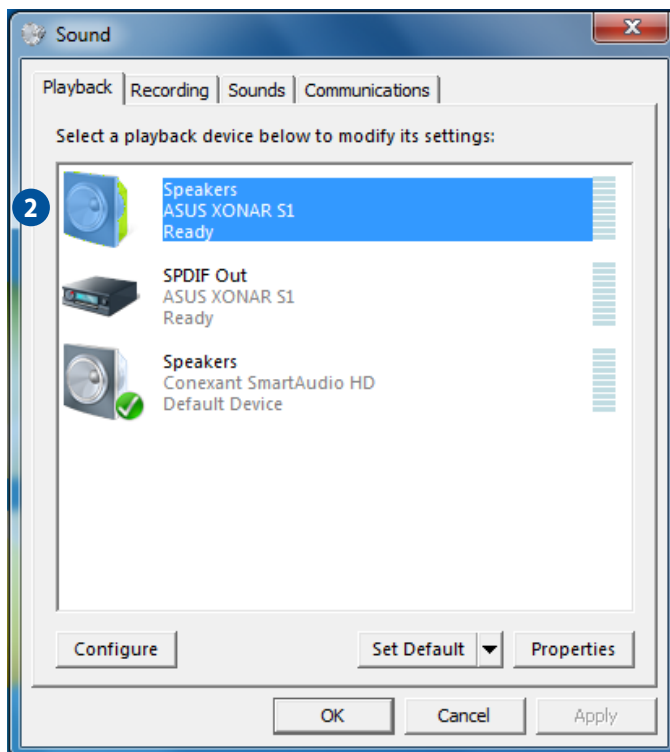
### On Windows® OS

Follow these steps to configure the audio settings:

1. Go to Control Panel and click **Sound**.

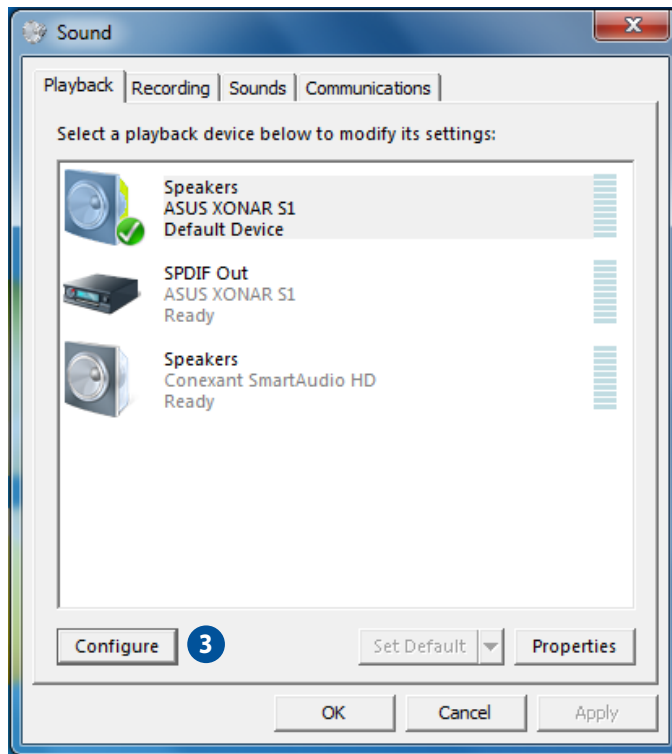


2. Select ASUS XONAR S1 and click **Set Default** to set ASUS XONAR S1 as the default audio output.

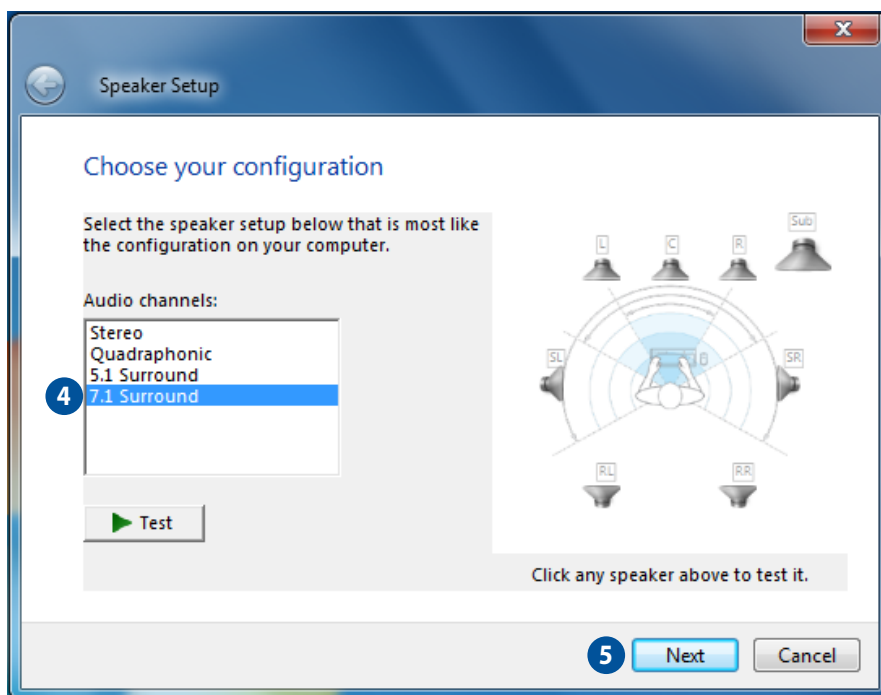


**NOTE:** Skip the following steps when using a headphone.

3. If you want to connect your device to multi-channel speakers, click **Configure** to set up your speaker.



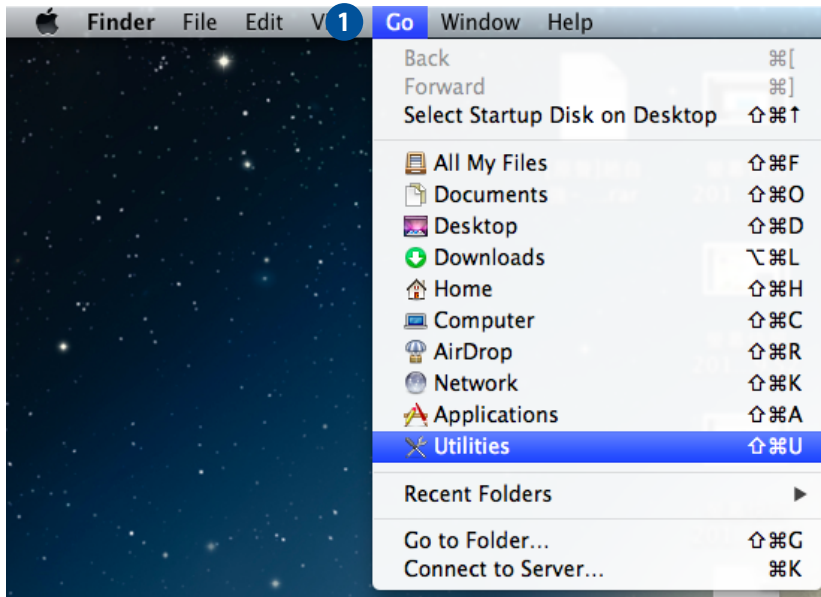
4. Choose the appropriate configuration according to the type of your speaker.
5. Follow the on-screen instructions to complete the setup.



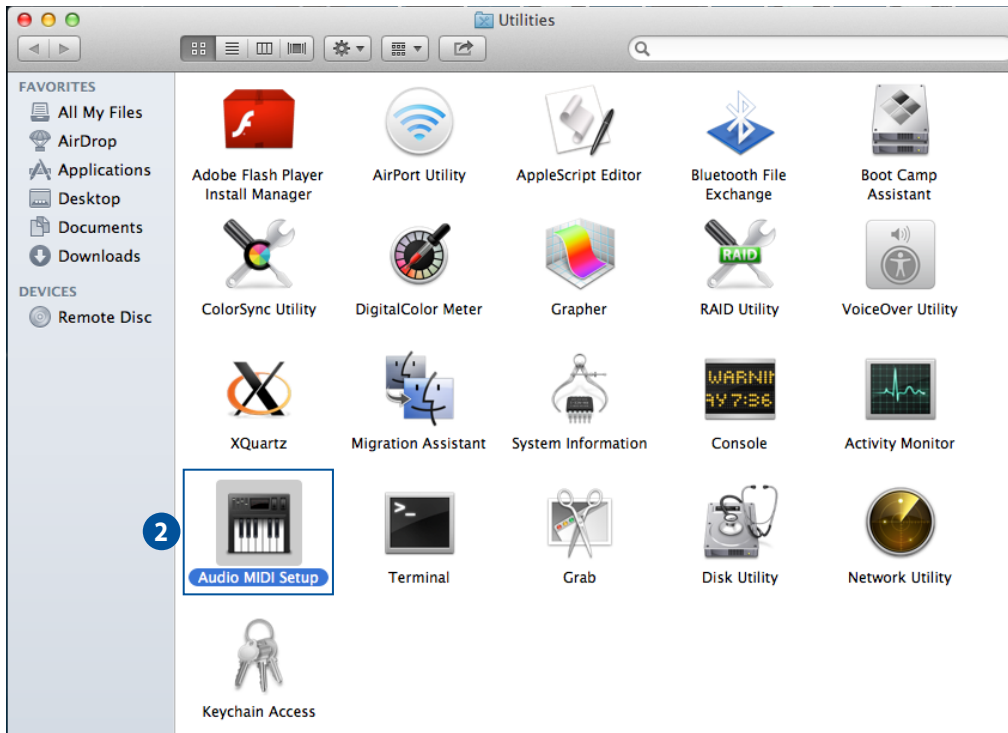
## On Mac OS

Follow these steps to configure the audio settings:

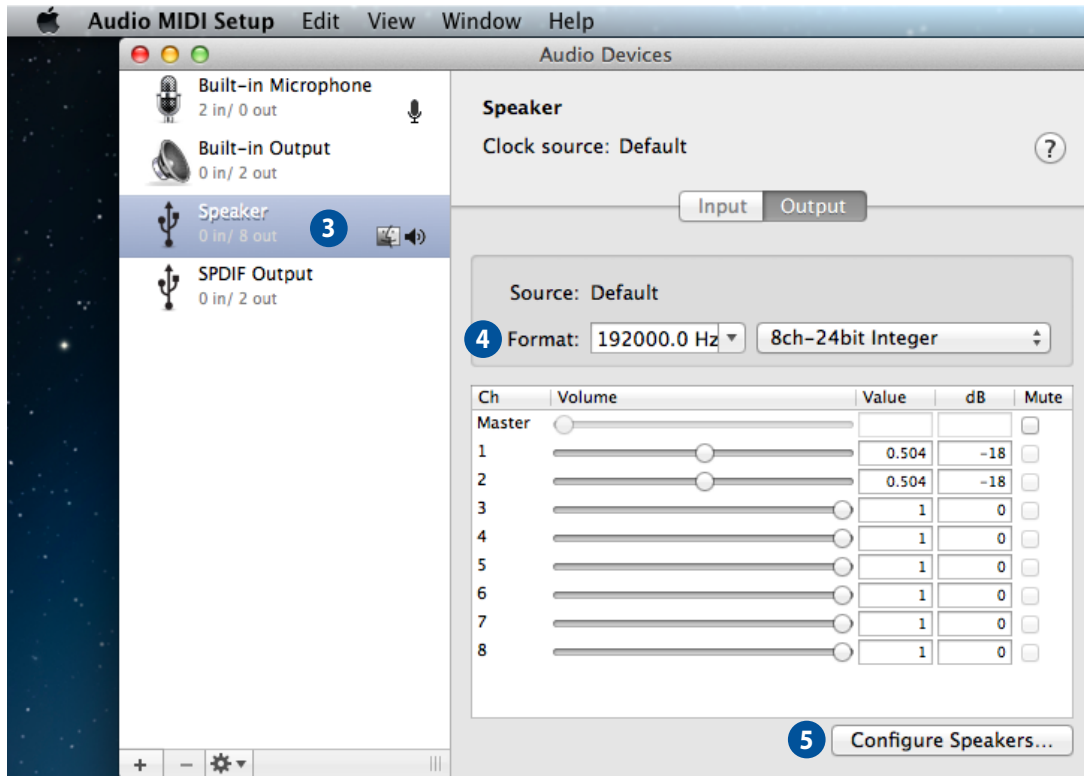
1. Click **Go** on the control bar then select **Utilities**.



2. Double-click **Audio MIDI Setup**.



3. From the Audio MIDI Setup screen, select **Speaker**.
4. Select an output format according to your speakers.
5. Click **Configure speakers** and follow the on-screen instructions to complete the setup.



## 3. Using your device

### 3.1 Installing CyberLink Media Suite on Windows® OS

CyberLink Media Suite is an all-in-one multimedia suite that includes the following four utilities:

- PowerDVD 12\*
- Power2Go 8
- PowerBackup 2.5\*
- InstantBurn 5\*

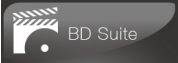
\* Only available on SBW-S1 *PRO*

---

**NOTE:** Click  on the right-upper corner of the Media Suite screen to see the detailed instructions on how to use CyberLink Media Suite.

---

#### To install CyberLink Media Suite on your computer:

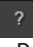
1. Power on your device.
2. Insert the bundled driver CD into the optical drive bezel.
3. On the AutoPlay window, click **Run setup.exe**.
4. On the next screen, click  and follow the on-screen instructions to complete the installation.
5. After the installation is complete, restart your computer.

## 3.2 Playing an audio or video disc on Windows® OS

While your system is on, insert an audio or video disc into the optical drive bezel with the label side up. PowerDVD 12 will play the audio or video disc automatically.

If your disc is not played automatically, click **Computer** then double-click the drive icon to play the audio or video disc using PowerDVD 12.

### NOTES:

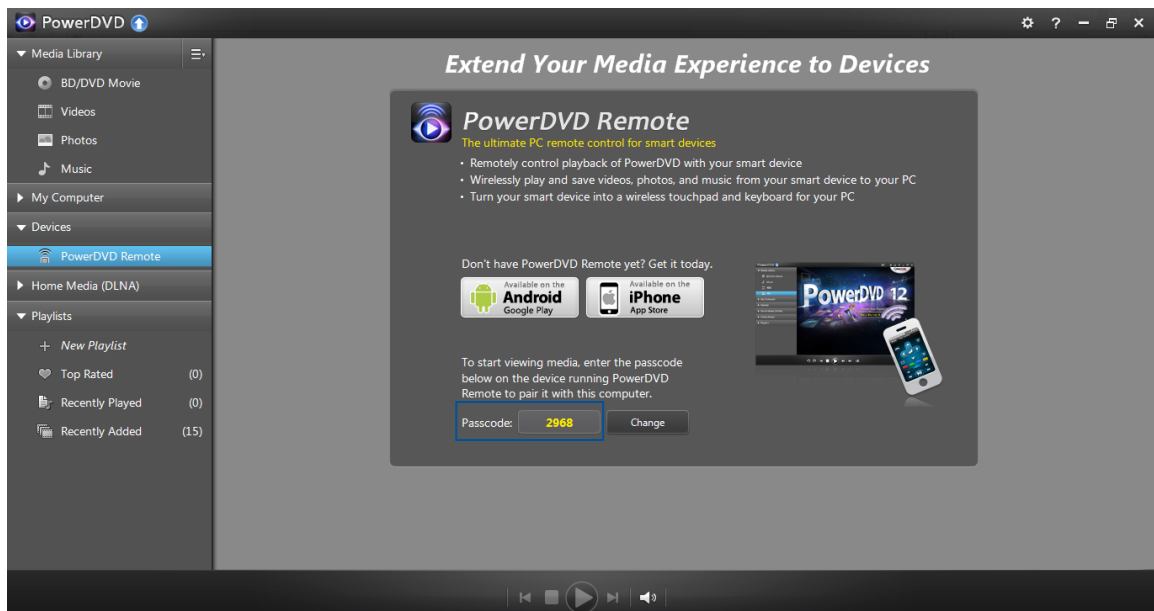
- Refer to section **3.1 Installing CyberLink Media Suite on Windows® OS** on how to install PowerDVD 12.
- Click  on the right-upper corner of the PowerDVD screen to see the detailed instructions on how to use PowerDVD 12.

## Remote-control your playback using PowerDVD Remote FREE

1. On your mobile device, download and install **PowerDVD Remote FREE** from Google Play or App Store.

**NOTE:** Ensure that your mobile device and your computer are in the same network.

2. On your computer, click **All Programs > CyberLink Media Suite > CyberLink PowerDVD 12 > CyberLink PowerDVD 12** to launch PowerDVD 12.
3. Click the **Devices** tab then click **PowerDVD Remote** to open the PowerDVD Remote screen.
4. On your mobile device, launch **PowerDVD Remote FREE** then enter the passcode displayed on the PowerDVD Remote screen on your computer. Now you can remote-control the playback using your mobile device.

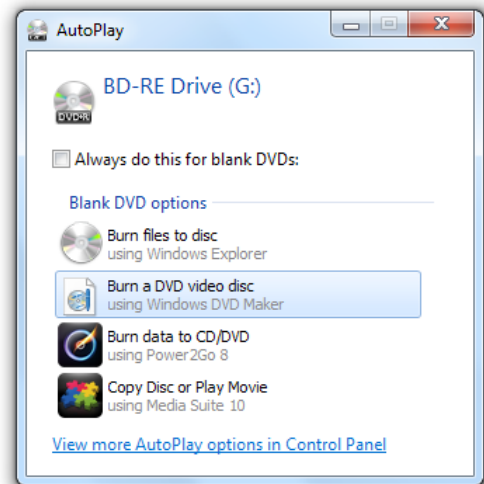


### 3.3 Burning files to disc on Windows® OS

#### Burning data to CD/DVD using Power2Go 8

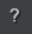
##### To burn data to CD/DVD using Power2Go 8

1. While your system is on, insert a blank disc into the optical drive bezel with the label side up.
2. Click **Burn data to CD/DVD** from the AutoPlay window.



3. Click an icon to create a data disc.

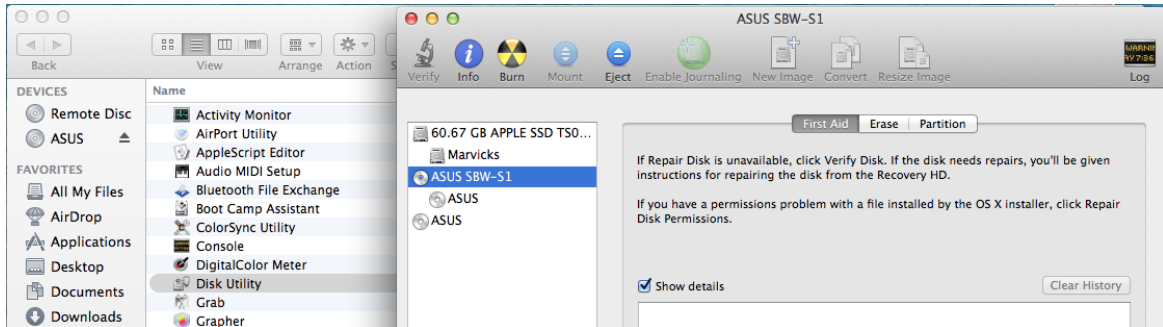


**NOTE:** Click  on the right-upper corner of the Power2Go screen to see the detailed instructions on how to use Power2Go 8.

### 3.4 Playing a disk and burning files on Mac OS

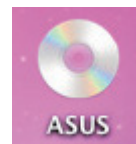
#### Checking if your Mac has detected the ODD

1. Click **Go** on the control bar then select **Utilities**.
2. Double-click **Disk Utility**. You can find the optical drive in the list.



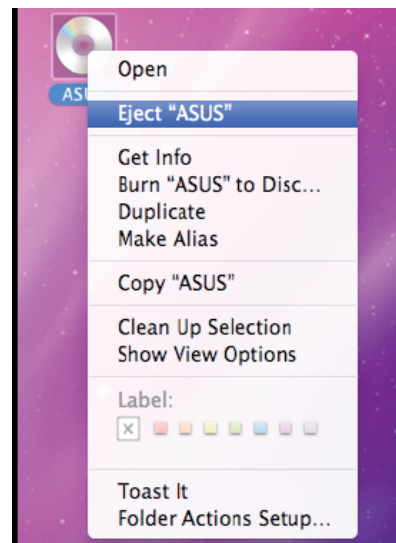
#### Playing a disc

1. Insert a disc that contains files. A disc icon appears on the desktop when you insert a disc.
2. Double-click the disc icon to play the disc.



To eject the disc, right-click the disc icon then select **Eject [Disc Name]**.

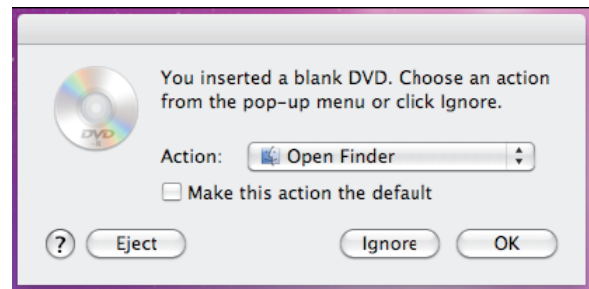
**NOTE:** The Eject button does not work on Mac OS.



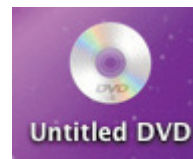


## Burning files

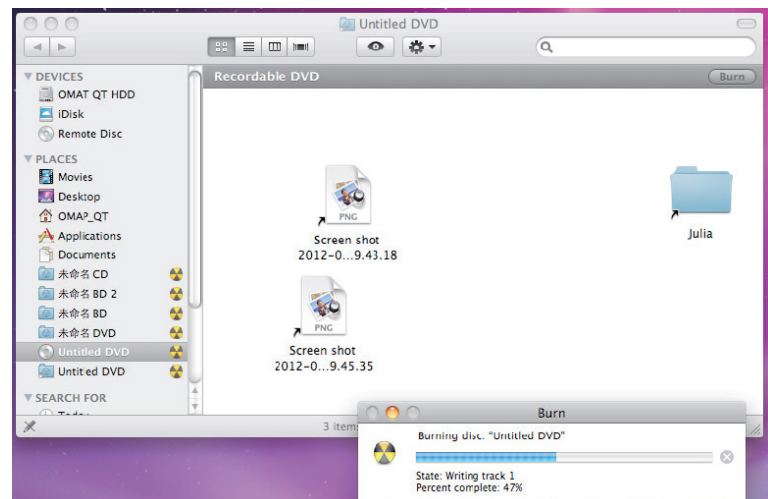
1. A menu will pop-up when you insert a blank disc. Select an action and click **OK**.



2. A disc icon will be created on your desktop.



3. Click on the disc icon to open the disc burning application.
4. Drag the files that you wish to burn into the application.
5. Click **Burn**.



### NOTES:

- Mac OS supports DVD burning and playback.
- Mac OS supports burning to a Blu-ray disc. You need to purchase third-party software if you want to play movies from Blu-ray discs.
- Does not support BOOTCAMP INSTALL Windows® OS.

## 4. Troubleshooting

### 1. I cannot install the driver in my PC.

- a) Ensure that you have connected SBW-S1 *PRO* properly to the USB port of your computer and powered it on.
- b) Ensure that your computer has Windows® 7, Windows® 8 or Windows® 8.1 installed.
- c) Restart your computer.

### 2. My computer failed to detect the external optical drive.

- a) Shut down your computer.
- b) Ensure that the USB cable and the power adapter are connected properly, the device is powered on, and the LED light up.
- c) Turn on your computer.

### 3. I cannot find ASUS XONAR S1 from Windows® Control Panel > Sound.

- a) Ensure that you have connected SBW-S1 *PRO* properly to the USB port of your computer and powered it on.
- b) Ensure that you have installed the driver properly.
- c) Ensure that your computer has Windows® 7, Windows® 8 or Windows® 8.1 installed.
- d) Restart your computer.

### 4. I cannot hear any sound from my analog speakers.

- a) Ensure that you have connected speakers properly and have powered on your speakers.
- b) Go to Windows® **Control Panel > Sound** to check if the playback default device is set to Speakers of ASUS XONAR S1. If not, set it to Speakers of ASUS XONAR S1.
- c) Restart your computer.

### 5. I cannot hear any sound from the S/PDIF output.

- a) Ensure that you have powered on the S/PDIF device and properly set it up.
- b) If you are using 192kHz PCM output, make sure that your decoder can support 192kHz decoding. Try changing it to 44.1k or 48kHz first.
- c) Go to Windows® **Control Panel > Sound** to check if the playback default device is set to S/PDIF Out of ASUS XONAR S1. If not, set it to S/PDIF Out of ASUS XONAR S1.
- d) Restart your computer.