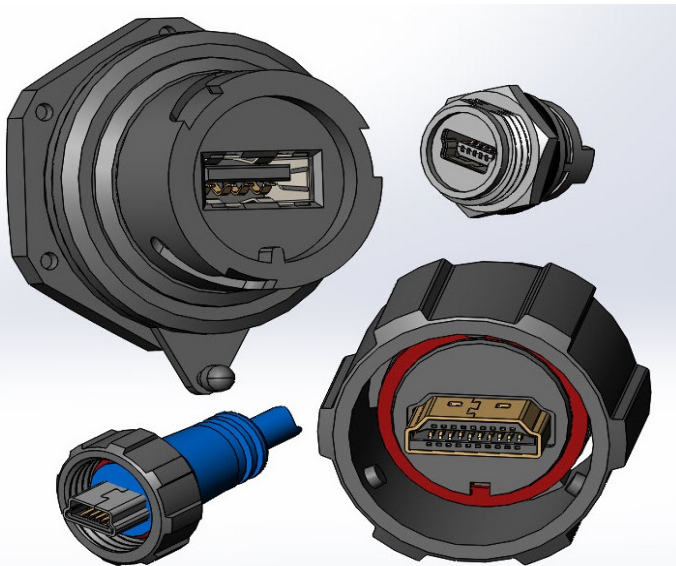




# SERIES 690W

## WATERPROOF USB & HDMI



### FEATURES:

- E-SEAL Waterproof Connectors
  - Standard USB TypeA
  - Micro USB
  - Mini USB Type B
  - HDMI Type A
- Material: Thermoplastic, UL 94V-0 Rated, Black color
- Shell: Steel, Nickel Plated
- O-Ring: Silicone
- Contact Material: Phosphor Bronze, Gold Plated
- Compatible with all Windows versions
- 1.2Mbps or 480Mbps communication speed
- Complies with USB1.0 (USB2.0 upon request)
- Compatible with asynchronous and isochronous data transfer methods
- Silicone rubber seals
- Secure latching system for safe mating under severe vibration or shock conditions

### SPECIFICATIONS:

- Rated Current: 1A
- Contact Resistance: 50 mOhm Max
- Insulation Resistance: 100 MOhm Min
- Temperature Rating: -25°C ~ +85°C
- Degree of Protection: IP67 as per IEC60529



### Example Part Number:

# 690-W04-260-012

SERIES:  
USB, HDMI . . . 690

CROSS / REF:  
EDAC CODE  
WATERPROOF . . . . W

NO. OF CONTACTS:  
(STANDARD USB-A) 4 CONTACT PINS . . . . 04  
(MICRO OR MINI USB) 5 CONTACT PINS . . . . 05  
(HDMI) 19 CONTACT PINS . . . . 19

CONTACT PLATING  
Gold Flash Plating over Nickel . . . . 2  
15 µIN of Gold Plating over Nickel . . . . 3  
30 µIN of Gold Plating over Nickel . . . . 6

TYPE:  
11 . . . . HDMI TYPE A, MALE  
12 . . . . HDMI TYPE A, FEMALE  
13 . . . . USB TYPE A, MALE  
14 . . . . USB TYPE A, FEMALE  
43 . . . . MINI USB TYPE B, MALE  
44 . . . . MINI USB TYPE B, FEMALE  
83 . . . . MICRO USB, FEMALE

INSULATOR COLOR:  
0 . . . . BLACK

CONTACT CODE:  
60 . . . . STRAIGHT TYPE  
90 . . . . SMT TYPE (MICRO USB ONLY)

### NOTE:

MICRO USB IS ONLY AVAILABLE IN SMT TYPE