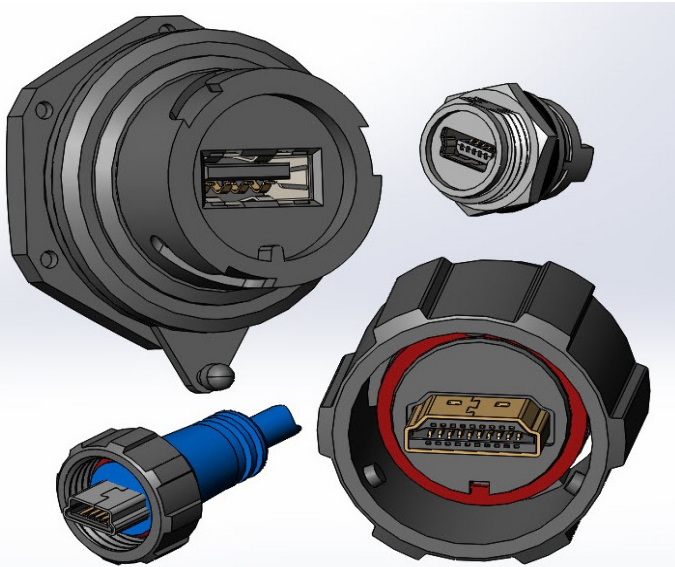




SERIES 690W

WATERPROOF USB & HDMI



FEATURES:

- E-SEAL Waterproof Connectors
 - Standard USB Type A
 - Micro USB
 - Mini USB Type B
 - HDMI Type A
- Material: Thermoplastic, UL 94V-0 Rated, Black color
- Shell: Steel, Nickel Plated
- O-Ring: Silicone
- Contact Material: Phosphor Bronze, Gold Plated
- Compatible with all Windows versions
- 1.2Mbps or 480Mbps communication speed
- Complies with USB1.0 (USB2.0 upon request)
- Compatible with asynchronous and isochronous data transfer methods
- Silicone rubber seals
- Secure latching system for safe mating under severe vibration or shock conditions

SPECIFICATIONS:

- Rated Current: 1A
- Contact Resistance: 50 mOhm Max
- Insulation Resistance: 100 MOhm Min
- Temperature Rating: -25°C ~ +85°C
- Degree of Protection: IP67 as per IEC60529



Example Part Number:

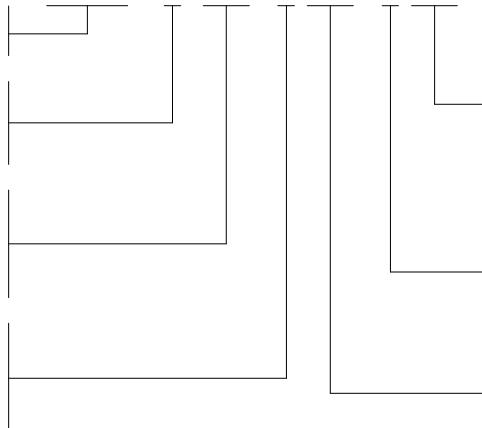
690-W04-260-012

SERIES:
USB, HDMI 690

CROSS / REF:
EDAC CODE
WATERPROOF W

NO. OF CONTACTS:
(STANDARD USB-A) 4 CONTACT PINS 04
(MICRO OR MINI USB) 5 CONTACT PINS 05
(HDMI) 19 CONTACT PINS 19

CONTACT PLATING
Gold Flash Plating over Nickel 2
15 µIN of Gold Plating over Nickel 3
30 µIN of Gold Plating over Nickel 6



TYPE:
11 HDMI TYPE A, MALE
12 HDMI TYPE A, FEMALE
13 USB TYPE A, MALE
14 USB TYPE A, FEMALE
43 MINI USB TYPE B, MALE
44 MINI USB TYPE B, FEMALE
83 MICRO USB, FEMALE

INSULATOR COLOR:
0 BLACK

CONTACT CODE:
60 STRAIGHT TYPE
90 SMT TYPE (MICRO USB ONLY)

NOTE:

MICRO USB IS ONLY AVAILABLE IN SMT TYPE