

TECHNICAL CHARACTERISTICS :

- Female screw locks: steel, tin plated .
- Compensating washer: steel , tin plated .
- Packaging : per 100 pieces .
- Corrosion resistance : 24 hours exposure to salt spray .

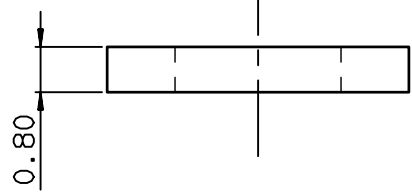
PART NUMBER	THREADED A
863001019TLF	UNC 4.40
863001018TLF	M3

NOTE:RoHS INFORMATIONS

- The "LF" products meet European union Directives and other country regulations as described in GS-22-008.
- Plating Sn (pure bright) over copper
- Packaging spec: see GS-14-920



Copyright FCI.



European Views

www.fciconnect.com			surface ISO 1302 ✓	tolerance std ISO 406 ISO 1101	projection ⊕	mm ↔
TOLERANCES UNLESS OTHERWISE SPECIFIED						
Dr	JARRY	2000/09/18	ANGULAR	LINEAR	0.X	±0.1
Eng	PESSON	2000/09/18			0.XX	±0.1
Chr	LEGARE	2000/09/18	0.XX' ±2'	0.XXX	±0.1	size A3
Appr	LEGARE	2000/09/18	Product family		D-SUB	Scale 10
ECN						LS09-0006
Spec ref						-
title FEMALE SCREW LOCKS D SUB ACCESSORIES					dwg no C01-8655-1548	Rev. E
catalog no					-	CUSTOMER sheet 1 of 1

rev	ecn no	dr	date
B	-	JOU	2003/01/17
C	LS05-0026	MPE	2005/07/08
D	LS06-0097	LGO	2006/07/28
E	LS09-0006	PCR	2009/01/08
-	-	-	-
-	-	-	-
-	-	-	-