

REFERENCE SPECIFICATIONS

- DIN 41652
- MIL-DTL-24308

PHYSICAL CHARACTERISTICS

- INSULATOR MATERIAL:
- PBT COLOR BLACK-RAL 7001/STANDARD MATERIAL
- CONTACT MATERIAL: - PHOSPHOR BRONZE FOR STRAIGHT CONTACT AND RA SOCKET
- BRASS FOR RA PIN
- GROUNDING DEVICE MATERIAL : - BRASS FOR RIGHT ANGLE CONTACT

ELECTRICAL CHARACTERISTICS

- MAXIMUM RATING CURRENT: 5A AT 70°C
- NOMINAL CURRENT: 5A (STANDARD CONDITIONS)
- CONTACT RESISTANCE : straight terminations: <10mW
Right angled termination: <25mΩ
: <35mΩ for 50 way
- VOLTAGE PROOF : >1000 V.r.m.s.
- RATED VOLTAGE : 300 V.r.m.s.
- insulation resistance: >5000mΩ
- creepage and clearance distance: >1mm
- average wiping length: 2mm

MECHANICAL CHARACTERISTICS

- RETENTION AGAINST TORQUE: - Threaded insert: 0.7 N.m minimum
- Female screw lock: 0.5 N.m minimum
- INSERTION AND WITH DRAWAL FORCE: <n x 3.40 N (n number of cts)
- GAUGE RETENTION FORCE : >0.20 N (gauge PM)
- THICKNESS GAUGE = Ø0.99±0.005 / SURFACE ROUGHNESS:
• Ra=0.10µ mini- 0.25µ maxi
- CONTACT RETENTION IN INSULATOR : mini 16N for straight contact
mini 20N for right angled contact
- VIBRATIONS: 10-2000Hz / 1.5 mm - 20g /3 x 2 HRS
- INTERRUPTION <1µs (NOT APPLICABLE FOR PL3)
- SHOCK: ACC. HALF SINE 50g- 11m.s-6x3 SHOCKS
- INTERRUPTION <1µs
- HARPOON INSERTION FORCE: <60N

PERFORMANCE LEVELS

MECHANICAL ENDURANCE ONLY		
P/N: DXXXXCXXXXXX		PERFORMANCE LEVELS
4	200 OPERATIONS	PL3
6	400 OPERATIONS	PL1

MECHANICAL ENDURANCE AND INDUSTRIAL ATMOSPHERE TEST(1)		
P/N: DXXXXCXXXXXX		PERFORMANCE LEVELS
4	salt spray: 24 hours	PL3
6	250 op + test (1 or 2)-10 days + 250 op	PL1

1) INDUSTRIAL ATMOSPHERE TEST: 3 GASES available for contacts and grounding device

IN ACCORDANCE WITH IEC-68-2-60-TTD - TEST ke - MTH C OR IEC 512-6 TEST 11g

MIXED GASES: H2S=10 PPB±5.10-9vol/vol +N2O=200±50.10-9 vol/vol + CL2=10±5.10-9vol/vol

TEMPERATURE = 30±1°C / RELATIVE HUMIDITY= 70±3°C

(2) INDUSTRIAL ATMOSPHERE TEST: 4 GASES available for contacts active area only

BELCORE TEST : MIXED GASES: H2S=10 PPB±5 vol/vol +N2O=200ppb±50 vol/vol + CL2

=10ppb±3vol/vol + S2O=100ppb±30vol/vol

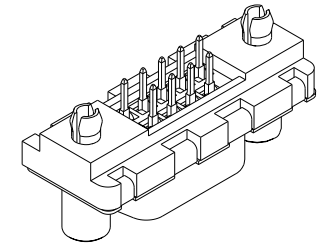
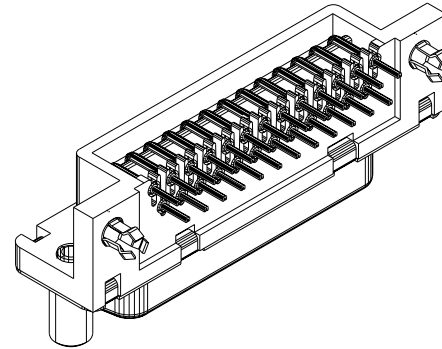
TEMPERATURE = 30±1°C / RELATIVE HUMIDITY= 70±2°C

ENVIRONMENTAL CHARACTERISTICS

- CLIMATIC CATEGORY: 55/125/56
- TEMPERATURE RANGE -55°C TO +125°C
- DAMP HEAT STEADY STATE 56 DAYS

RIGHT ANGLED

STRAIGHT



PLATING TIN LEAD VERSION

- CONTACT:
 - GOLD OVER NICKEL ON MATING SURFACES
 - TIN LEAD OVER NICKEL ON TERMINATION PARTS
- SHELL AND ACCESSORIES TIN LEAD OVER COPPER

PLATING TIN VERSION

NOTE RoHS INFORMATIONS

- The "LF" products meet European union Directives and other country regulations as described in GS-22-008
- The housing will withstand exposure to 260°C peak temperature for 3.5 seconds in a wave solder application with a 1.6 mm minimum thickcircuit board. See application notes/procedures if they are available.
- Termination plating spec: 1.27µm Nickel mini, 2.5 to 7.5 µm Sn (pure matte)
- Shell plating: 2 to 4 µm Cu + 3 to 10 µ Sn (pure bright)
- Accessories: Sn pure bright
- Packaging spec: see GS-14-920

Dr JOURBERT 30/11/00 Product family Eng Spec ref Chr Material SEE NOTES

Appr LEGARE 30/11/00 ECN LS05-0039

DELTA D SOLDER CTS CONNECTORS

GENERAL CHARACTERISTICS

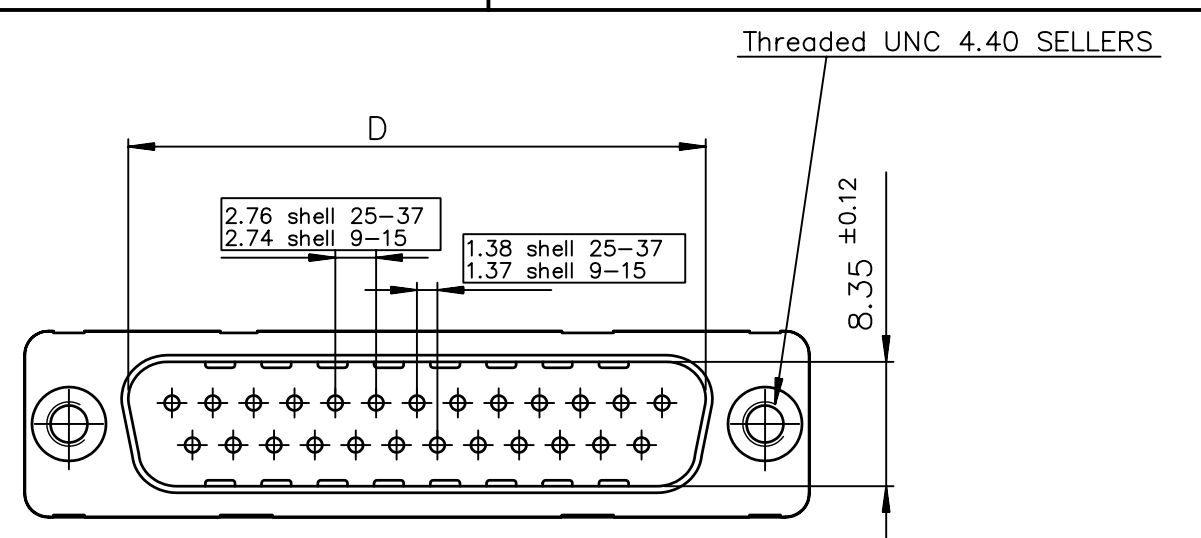
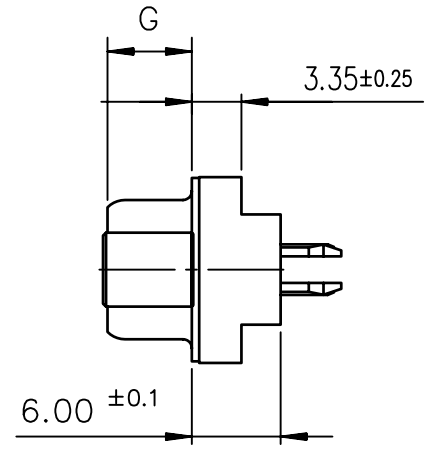
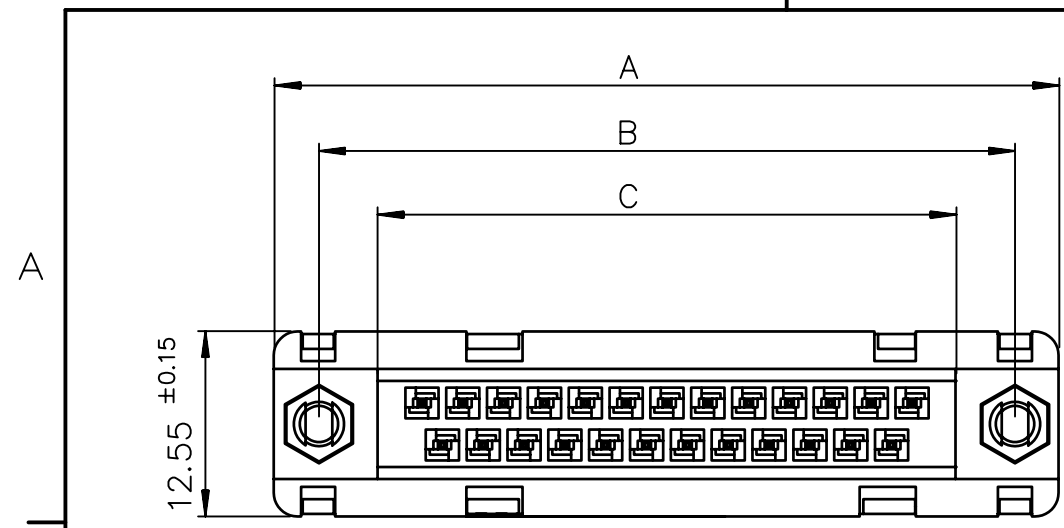
catalog no CUSTOMER COPY sheet 1 of 1

www.fciconnect.com		surface <input checked="" type="checkbox"/>	tolerance	projection	
Dr	JOURBERT	30/11/00	Product family	size A3	Scale 1:1
Eng			Spec ref	ECN	LS05-0039
Chr			Material	SEE NOTES	
Appr	LEGARE	30/11/00			
title	DELTA D SOLDER CTS CONNECTORS				Rev. C
	GENERAL CHARACTERISTICS				
	dwg no	C01-8646-0000			
	customer no	CUSTOMER COPY			sheet 1 of 1

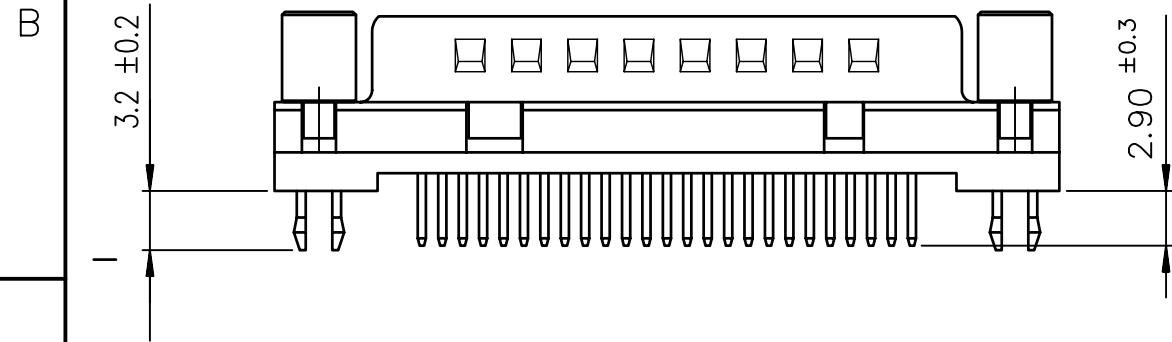
Tous droits strictement réservés. Reproduction ou utilisation sans autorisation écrite du propriétaire. Interdit sous quelque forme que ce soit sans autorisation écrite du propriétaire. Property of FCI. Droits de reproduction FCI.

FCI

All rights strictly reserved. Reproduction or use without written authority from the proprietor. Property of FCI. Copyright FCI.



SHELL	A±0.38	B±0.12	C±0.10	D±0.25	E±0.07	G±0.25
09	30.81	24.99	16.96	16.79	10.96	5.90
15	39.14	33.32	25.18	25.12	19.18	5.90
25	53.03	47.04	39.12	38.84	33.12	5.70
37	69.32	63.50	55.68	55.30	49.68	5.70



SHELL	LEAD FREE PART NUMBER	TIN LEAD PART NUMBER	DESIGNATIONS
09	D09P24A6GV00LF	D09P24A6GV00	HEADER 9 CTS STRAIGHT-SOLDER TO BOARD-PCB HARPOON-SCREWLOCK -ELEC.CONTIN.
15	D15P24A6GV00LF	D15P24A6GV00	HEADER 15 CTS STRAIGHT-SOLDER TO BOARD-PCB HARPOON-SCREWLOCK -ELEC.CONTIN.
25	D25P24A6GV00LF	D25P24A6GV00	HEADER 25 CTS STRAIGHT-SOLDER TO BOARD-PCB HARPOON-SCREWLOCK -ELEC.CONTIN.
37	D37P24A*GV00LF	D37P24A*GV00	HEADER 37 CTS STRAIGHT-SOLDER TO BOARD-PCB HARPOON-SCREWLOCK -ELEC.CONTIN.

V = SCREWLOCK Threaded UNC 4.40 sellers

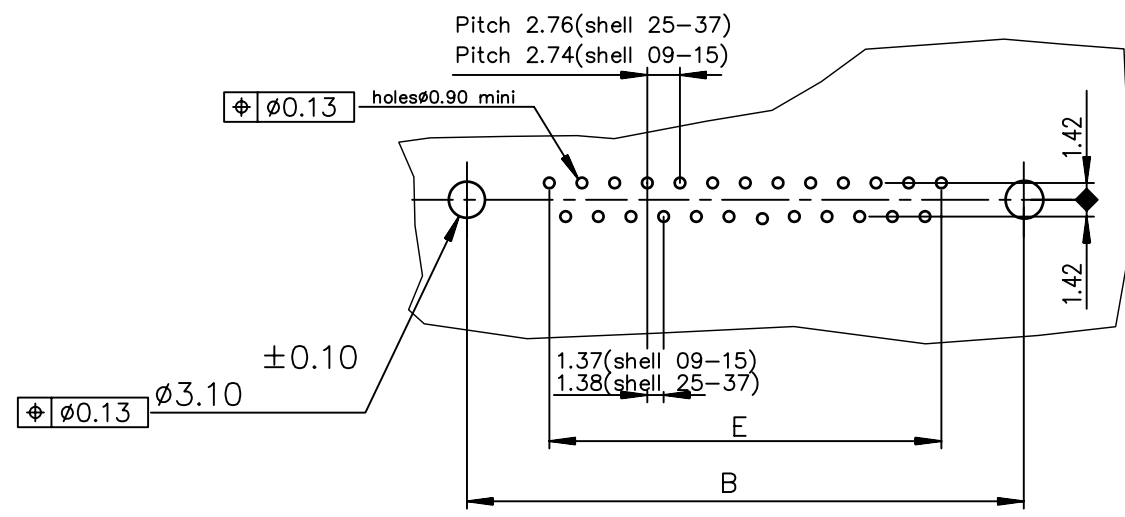
- 4 = Performance level PL3 ≥ 200 OPERATIONS
- 6 = Performance level PL1 ≥ 500 OPERATIONS

SHELL	LEAD FREE PART NUMBER	TIN LEAD PART NUMBER	DESIGNATIONS
09	D09P24A*GI00LF	D09P24A*GI00	HEADER 9 CTS STRAIGHT-SOLDER TO BOARD-PCB HARPOON-SCREWLOCK -ELEC.CONTIN.
15	D15P24A*GI00LF	D15P24A*GI00	HEADER 15 CTS STRAIGHT-SOLDER TO BOARD-PCB HARPOON-SCREWLOCK -ELEC.CONTIN.
25	D25P24A*GI00LF	D25P24A*GI00	HEADER 25 CTS STRAIGHT-SOLDER TO BOARD-PCB HARPOON-SCREWLOCK -ELEC.CONTIN.
37	D37P24A*GI00LF	D37P24A*GI00	HEADER 37 CTS STRAIGHT-SOLDER TO BOARD-PCB HARPOON-SCREWLOCK -ELEC.CONTIN.

I = SCREWLOCK Threaded M3

- 4 = Performance level PL3 ≥ 200 OPERATIONS
- 6 = Performance level PL1 ≥ 500 OPERATIONS

PC card drilling dimensions(after plating)
(thickness 1.60±0.20mm)



GENERAL CHARACTERISTICS AND ROHS INFORMATIONS:
SEE DRAWING C01-8646-0000

European Views

www.fciconnect.com		surface ISO 1302 ✓	tolerance std ISO 406 ISO 1101	projection mm
		TOLERANCES UNLESS OTHERWISE SPECIFIED		
Dr	JARRY	1995/08/11	0.X	±0.1
Eng	PESSON	1995/08/11	0.XX	±0.1
Chr	NIRMAL GEORGE	2010-02-23	0.XXX	±0.1
Appr	SUDHIR VARMA	2010-02-23	Product family D-SUB	
title HEADER DELTA D STD EUROPE		spec ref -		size A3
catalog no -		ECN 110-0059		Scale 2
title HEADER DELTA D STD EUROPE		ECN 110-0059		Scale 2
title HEADER DELTA D STD EUROPE		ECN 110-0059		Scale 2
title HEADER DELTA D STD EUROPE		ECN 110-0059		Scale 2

rev	ecn no	dr	date
A	-	BAR	2003/04/16
B	LS05-001	MPE	2005/03/14
C	LS05-0056	LGO	2005/07/07
D	LS06-0097	LGO	2006/07/28
E	I09-0268	NG	2009-11-24
F	I10-0059	NG	2010-02-23



dwg no	C01-8646-0816	Rev.	F
CUSTOMER	sheet 1 of 1		



Copyright FCI.