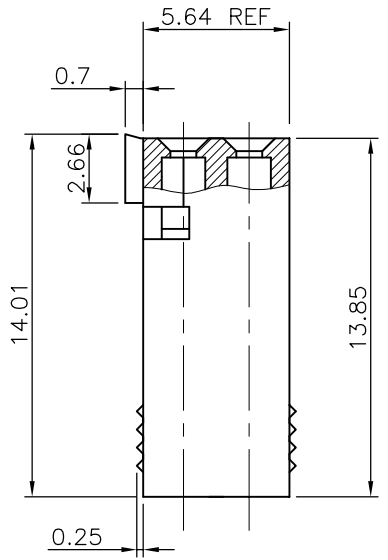
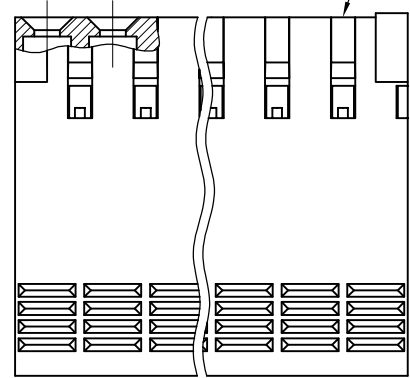
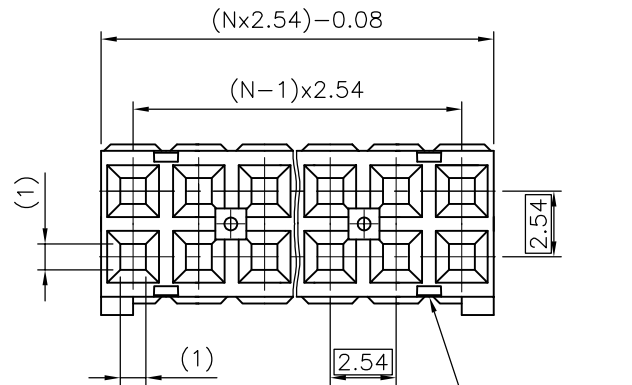


PRODUCT NUMBER

65239-YXXLF

WHEN NEEDED, SUFFIX LETTER "LF" INDICATES THE PRODUCT IS RoHS COMPLIANT, SEE NOTE 6
 NUMBER OF CAVITIES PER ROW : 02 TO 36.
 PLASTIC MATERIAL COLOR CODE.
 0 = BLUE
 1 = GREY



SEE NOTE 2

NOTES:

- 1 - HOUSING MAT'L: THERMOPLASTIC GLASS FILLED FLAME RETARDANT PER UL 94 V-0.
- 2 - OVER DASH -007 ONLY FIRST AND LAST THREE POSITIONS MUST HAVE GROOVES ON TWO SIDES.
- 3 - PRODUCT PACKED IN PLASTIC BAG.
- 4 - TO DETERMINE DIMENSIONS:
 N = NUMBER OF POSITIONS
 EXAMPLE: 8 POS: $(N \times 2.54) - 0.08 = 20.24$ mm.
- 5 - FOR TECHNICAL APPLICATION SEE TA317.
- 6 - RoHS COMPATIBLE PRODUCT SPECIFICATIONS

- a - LABELING:
 - MEETS PACKAGING SPECS AS PER GS-14-920
- b - LEGAL STATEMENT: SEE GS-22-008

THE PRODUCT IS NOT INTENDED TO BE EXPOSED TO A MANUFACTURING SOLDER PROCESS.

mat'l. code SEE NOTE		surface ISO 1302	tolerance ISO 406 ISO 101	projection	product family DUBOX
ltr	ecn no	dr	date	tolerances unless otherwise specified	title
M	F05-0236	DLE	05.08.24	±0.3	CtW HOUSING DR
N	F05-0286	DLE	05.11.07	linear	
P	F06-0146	DLE	06.03.10	±2'	scale 5:1
R	F06-0225	DLE	06.07.07	dr	L.MULIN 00.08.30
				enr	P.NIZZI 00.08.30
K	F04-0347	DLE	04.12.10	chr	JF.NOTTEAU 00.08.30
L	F05-0169	DLE	05.04.07	app	P.NZ 00.08.30
sheet index	revision sheet				FCI
dwg no					sheet 1 of 1 size
65239					A3
type					CUSTOMER Drawing



FCIconnect.com

Copyright FCI