



EZCast User's Manual

Rev. 1.00

General

EZCast is a special program to project your mobile device display to another screen through WiFi connection. You can enhance your TV/Projector with more features like decoding document files, linking with your dropbox account, web surfing, photo viewer, streaming video, live camera, internet video and more. It supports other popular standards like DLNA, Miracast and AirPlay as well.



Watch introduction video here: <http://goo.gl/sMfhtE>

Hardware Installation



1. Please connect EZCast's micro USB port to your power adaptor or USB power (Please make sure your USB power can supply over 500mA)
2. Connect EZCast to your TV/Projector's HDMI port, and switch the TV/Projector's source to it
3. You will see the EZCast main menu pops up and hear the welcome tone.
4. Please download EZCast app on different platforms (Windows/Mac/iOS/Android) to enjoy the WiFi display technology!



Watch setup video: <http://goo.gl/ruSjBV>

EZCast for iOS

● System requirements

iOS	iOS 7 and above
Device	All iPhone model after iPhone 4 All iPad model after iPad 2 All iPod touch after iPod touch 4 th generation
Resolution support	● iPhone: 480x320~1136x640 ● iPad: 1024x768~2048x1536
Storage	At least 40MB free space needed

● Download

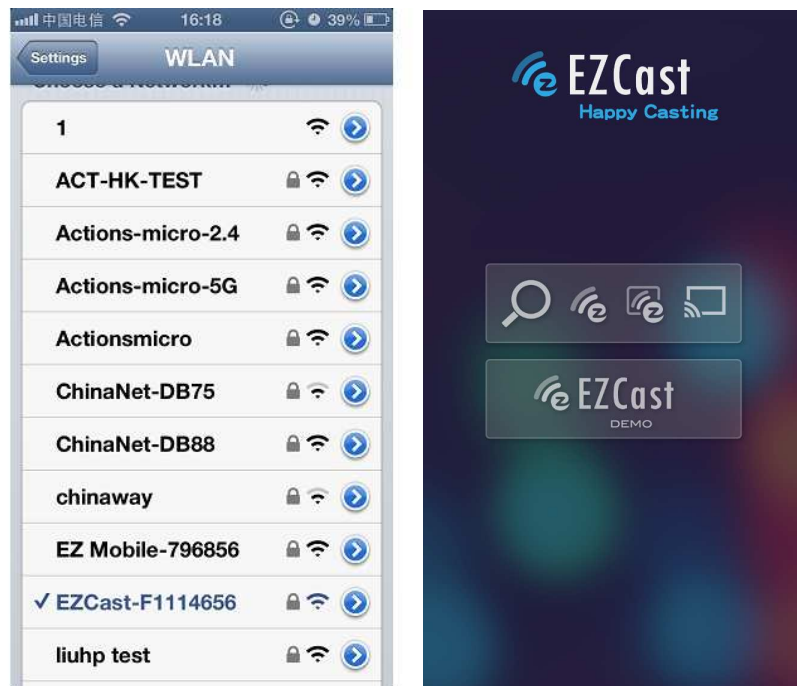
1. You can use QR code scanner app to scan the QR code on display, then you will be redirected to download our app:



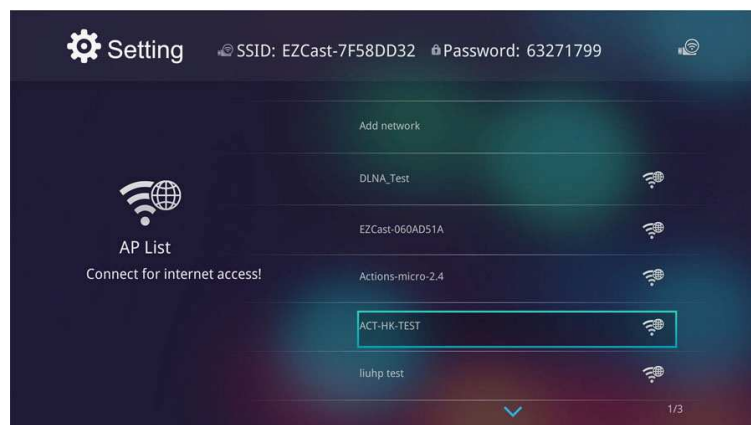
2. Or you can search the App name "EZCast" in App Store.
(<http://goo.gl/TUA7tz>)

● Device Connection

1. Before you start the app, please connect your iOS device's WiFi with EZCast dongle SSID (ex: EZCAST-xxxxxxx)



2. When you execute the app, you can use “Demo mode” or “Find device” to start over to enjoy our features.
3. Click “Find device” to discover EZCast receiver and start to cast.
4. In the first time of app launching, we will pop up WiFi router list so that you can force EZCastdongle to connectHome WiFirouter to keep internet surfing. (we strongly recommend you to establishEZCastdongle’sWiFi with your home/company networkto keep internet surfing since your mobile device’s WiFi is linking to EZCast dongle.)



5. Except EZCast dongle, if you have a ChromeCast dongle, you can also find it as an EZCast receiver if your iPhone is under same network with your Chromecast.
6. In the demo mode, you can see all the major features demo even withoutconnecting to EZCast dongle.

*Please be noted not all EZCast features are supported by ChromeCast dongle, to enjoy the best WiFi display experiences, we encourage you to use our EZCast dongle.

Watch EZCast for ChromeCast demo: <http://goo.gl/cDJ2Ut>



● Features



Photo Viewer

- ◆ You will have to allow EZCast to share your camera roll and enable the location service before using Photo function.



- ◆ In Photo viewer, you can select photo and it will be displayed on your TV. You can also use gesture control to zoom in/out or change photos.
- ◆ We developed a practical tool called "Sketch", you can draw on the photo you picked, and save it if you like.



Document Viewer

- ◆ The document viewer can support MS-office, PDF, and Apple's iWorks. Before you start to display, please sync the document files

to your iOS device through iTunes.

- ◆ The document viewer supports sketch as well, that means you can make some note on the document, and save the page to camera roll.

Watch how to sync files to your iOS device: <http://goo.gl/UF5IU8>



*Please be noted some documents may not be displayed the same as shown on PC.



Live Camera

- ◆ Live camera is a real objectcamera which allows you to stream the image from mobile device's camera, and take a snap shot to edit.
- ◆ You can adjust image quality, switch from Front/Rear camera. You can enable Sketch and save the current image to album.



Video Player

- ◆ There are 2 sources to video streaming. One is to sync the video you like through iTunes (iTunes File Syncing), or you can select video from your recorded video (Camera Roll)
- ◆ Please be noted iOS will compress the recorded video before streaming to save the bandwidth, you can decide if you want to save it in EZCast app for future use.
- ◆ If your synced video comes with subtitle, it will be automatically shown with video streaming.

* EZCastonly support MPEG1, 2, 4, H.264, and RMVB video formats. For subtitle, we support srt, smi, ssa and cdg formats.

For subtitle support, please see demo video:<http://goo.gl/0yq5Z8>



Music Player

- ◆ The music player allows you to stream music through WiFi, and we can support playlist.
- ◆ There are multiple music formats supported by EZCast:
ape,flac,ogg,mp3,wma,wav,rm,m4a,aac,dts,ac3,ra,aif,aiff,mka
- * Please be noted EZCast can't access your iTunes music library due to iOS limitation.



Web Browser

- ◆ EZCast comes with a built-in browser, and we also categorize several popular websites for you.
- ◆ The web page will dynamically change with different country setting in your device.
- ◆ Sketch function is also supported.



Cloud Storage

- ◆ We will link to your personal Dropbox and Google Drive account to let you access your cloud storage anywhere. All content will be shown for you to download and display.
- ◆ You can enable sketch function if you download and decode a document file.

*iOS version doesn't support Google Drive yet.



Live TV

- ◆ We categorized different internet TV sites for you, so that you can easily select the TV list and watch the program instantly.
- ◆ The list may vary with different country setting.



Cloud Media

- ◆ Cloud media is a shortcut for all major web video sites, you can link to Youtube, Vimeo and other on-line video sites with the existing shortcuts.



Comment

- ◆ We treasure your feedback either good or bad, so we created an innovative way to communicate with you. You can send some comments or suggestions to us directly, and all the inputs will be the best way to drive us better.



Update

- ◆ Update function allows you to check the app version, history and update it up to date.



Social Network

- ◆ This is a quick way to see what's hot or popular in your facebook video, you will be able to watch the video in big screen instead of watching it on small mobile devices.

- Special Feature:



Setting

- ◆ In setting function, you can setup EZCast Receiver's configurations including output resolution, change SSID password, setup router connection for internet surfing, boot up priority and update the latest FW over the air.



EZAir

- ◆ EZAir is a powerful mode which can be compatible with AirPlay. You can discover the EZCast device if you turn on AirPlay for your iOS device.
- ◆ In the iOS original photo, audio and video playback, you can simply click the display button to cast to EZCast receiver.
- ◆ Some Apple device which supports AirPlay Mirroring will also be able to discover EZCast receiver for screen mirroring.



For more demo clips or tutorials, please subscribe our Youtube channel: <http://goo.gl/enBNWj>

EZCast for Android

● System requirements

Phone/Pad	Android 4.0 ICS model with 1GB RAM
Resolution	WVGA ~1080p
Storage	At least 40MB free space needed

● Download

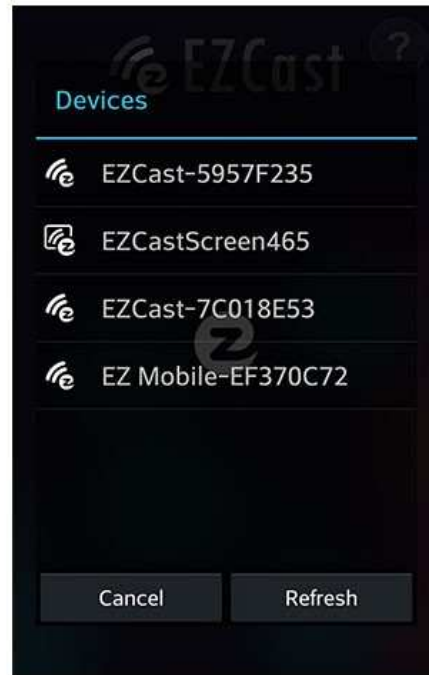
1. You can use QR code scanner app to scan the QR code on display, then you will be redirected to download our app



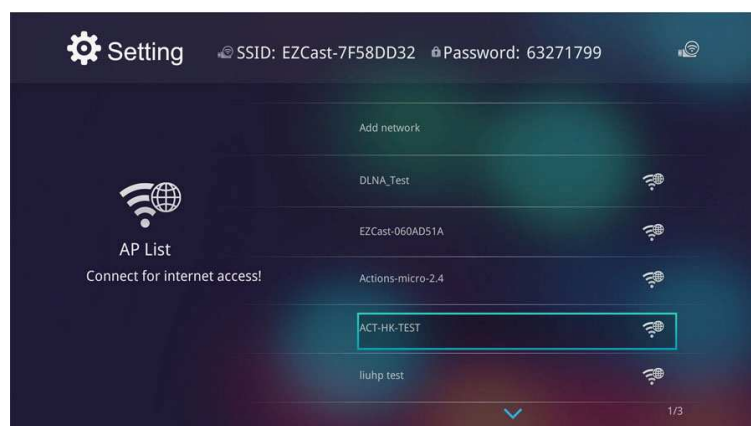
2. Or you can search the App name “EZCast” in Google Play.
(<http://goo.gl/1usQ23>)

● Device Connection

1. Before you start the app, we suggest connect your Android device’s WiFi with EZCast dongle SSID (ex: EZCAST-xxxxxxx), however, if you skip WiFi connection first, the EZCast app will allow you to connect to the dongle in app.



2. When you execute the app, you can use “Demo mode” or “Find device” to start over to enjoy our features.
3. Click “Find device” to discover EZCast receiver and start to cast.
4. If you didn't connect EZCast in the beginning, our android app will automatically list the EZCast dongle so that you can click it and connect it directly.
5. You will be able to find another EZCast installed phone if they are under the same network, it's a new feature to enhance your mobile phone to an EZCast receiver.
6. We strongly recommend you to establish EZCast dongle's WiFi with your home/company network to keep internet surfing since your mobile device's WiFi is linking to EZCast dongle.



7. Except EZCast dongle, if you have a ChromeCast dongle, you can also find it as an EZCast receiver if your Android device is under same network with your ChromeCast.
8. If you have a ChromeCast dongle, you can also find it as an EZCast receiver if your iPhone is under same network with your ChromeCast.

*Please be noted not all EZCast features are supported by ChromeCast dongle, to enjoy the best WiFi display experiences, we encourage you to use our EZCast dongle.

Watch EZCast for ChromeCast demo: <http://goo.gl/cDJ2Ut>



● Features



Photo Viewer

- ◆ In Photo viewer, you can select photo and it will be displayed on your TV. You can also use gesture control to zoom in/out or change photos.
- ◆ We developed a practical tool called “Sketch”, you can draw on the photo you picked, and save it if you like.



Document Viewer

- ◆ The document viewer can support MS-office, PDF, and Apple’s iWorks. Before you start to display, please sync the document files to your iOS device through iTunes.
- ◆ The document viewer supports sketch as well, that means you can make some note on the document, and save the page to camera

roll.

Watch how to sync files to your iOS device: <http://goo.gl/UF5IU8>



*Please be noted some documents may not be displayed the same as shown on PC.



Live Camera

- ◆ Live camera is a real objectcamera which allows you to stream the image from mobile device's camera, and take a snap shot to edit.
- ◆ You can adjust image quality, switch from Front/Rear camera. You can enable Sketch and save the current image to album.



Video Player

- ◆ There are 2 sources to video streaming. One is to sync the video you like through iTunes (iTunes File Syncing), or you can select video from your recorded video (Camera Roll)
- ◆ Please be noted iOS will compress the recorded video before streaming to save the bandwidth, you can decide if you want to save it in EZCast app for future use.
- ◆ If your synced video comes with subtitle, it will be automatically shown with video streaming.

* EZCast only support MPEG1, 2, 4, H.264, and RMVB video formats. For subtitle, we support srt, smi, ssa and cdg formats.

For subtitle support, please see demo video: <http://goo.gl/0yq5Z8>





Music Player

- ◆ The music player allows you to stream music through WiFi, and we can support playlist.
- ◆ There are multiple music formats supported by EZCast:
ape,flac,ogg,mp3,wma,wav,rm,m4a,aac,dts,ac3,ra,aif,aiff,mka
- * Please be noted EZCast can't access your iTunes music library due to iOS limitation.



Web Browser

- ◆ EZCast comes with a built-in browser, and we also categorize several popular websites for you.
- ◆ The web page will dynamically change with different country setting in your device.
- ◆ Sketch function is also supported.



Cloud Storage

- ◆ We will link to your personal Dropbox and Google Drive account to let you access your cloud storage anywhere. All content will be shown for you to download and display.
- ◆ You can enable sketch function if you download and decode a document file.

*Please be noted Google Drive will be only available on Android 4.4 or later version.



Live TV

- ◆ We categorized different internet TV sites for you, so that you can easily select the TV list and watch the program

instantly.

- ◆ The list may vary with different country setting.



Cloud Media

- ◆ Cloud media is a shortcut for all major web video sites, you can link to Youtube, Vimeo and other on-line video sites with the existing shortcuts.



Comment

- ◆ We treasure your feedback either good or bad, so we created an innovative way to communicate with you. You can send some comments or suggestions to us directly, and all the inputs will be the best way to drive us better.



Update

- ◆ Update function allows you to check the app version, history and update it up to date.



Social Network

- ◆ This is a quick way to see what's hot or popular in your facebook video, you will be able to watch the video in big screen instead of watching it on small mobile devices.

● Special Feature:



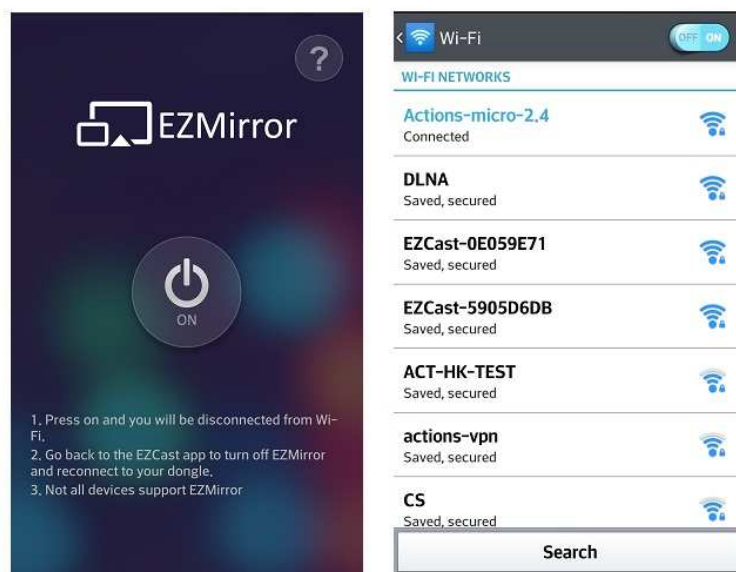
Setting

- ◆ In setting function, you can setup EZCast Receiver's configurations including output resolution, change SSID password, setup router connection for internet surfing, boot up priority and update the latest FW over the air.



EZMirror

- ◆ EZMirror is fully compatible with Miracast, you can click the EZMirror button in EZCast app, and the receiver will be switched to Miracast mode.
- ◆ Once you turn it on, there will be a 60seconds countdown for your mobile phone to connect with the receiver. Please select your Miracast function in your mobile phone setting page.



- ◆ We also recommend you link your smart phone to your home network at the same time to keep internet connection.



DLNA

- ◆ DLNA is an industrial standard which allows you to stream multimedia formats through WiFi/LAN.
- ◆ When you click DLNA button, there will be a pop-up support list, if you have installed the DLNA app in the list, you can switch to it

immediately.



Windows

● System requirements

CPU	Dual Core 2 GHz or higher (ATOM not supported)
Graphic card	Graphic card with 64MB VRAM or above
OS version	Windows XP SP3, Vista SP2, Windows 7 SP1, Windows 8/8.1 and above
PC's WiFi	802.11n (2T2R recommended)

*Audio will not be supported on XP, and extension mode is not available on Win8 now.

● Download

1. You can download Windows app from www.iezvu.com



Windows EZCast 7/8 Download -Latest version 1.0.0.143 Date:2014-06-05

EZCast application for Windows version, developed by WinnerWave, displays your Windows embedded PC and Notebook wirelessly via EZCast

 Download

[Read Full Description>>](#)

Windows EZCast Portable Version

EZCast Green version developed by WinnerWave, displays your Windows embedded PC and Notebook wirelessly via EZCast

 Download

[Read Full Description>>](#)

Windows EZCast XP/Vista Download

EZCast application for Windows version, developed by WinnerWave, displays your Windows embedded PC and Notebook

 Download

[Read Full Description>>](#)

2. Select the version you would like to download.

● Device Connection

1. Please connect EZCast dongle and power on.
2. After installation and restart your PC to take affected for our app.

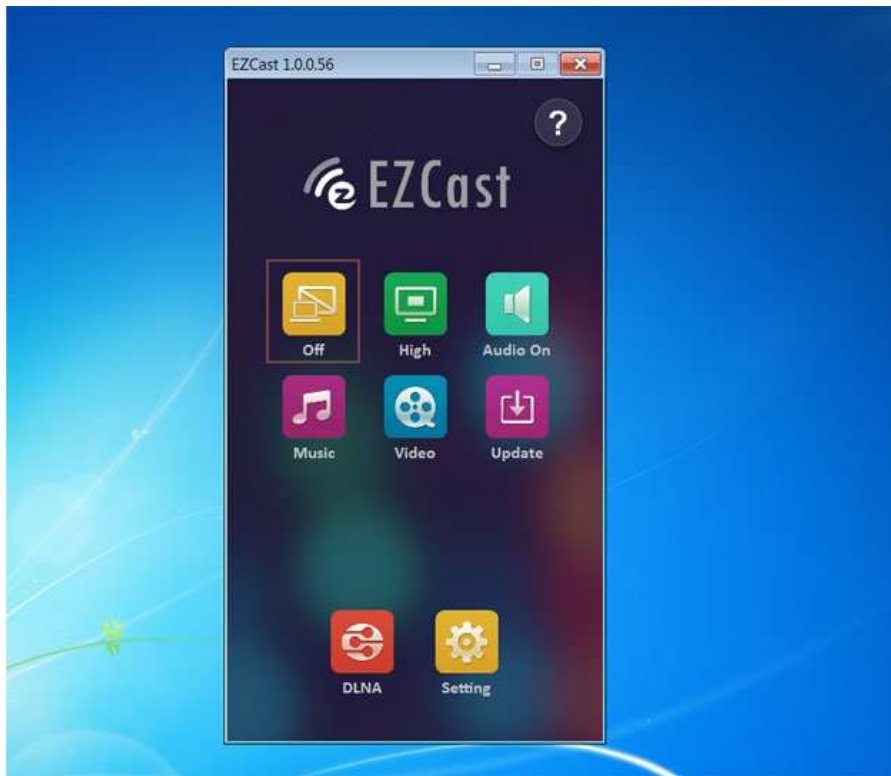
3. Before you start the app, we suggest connect your PC's WiFi with EZCast dongle SSID (ex: EZCAST-xxxxxxx), then execute EZCast app
4. Execute EZCast and allow access.



5. The EZCast will be listed, select the device ID and connect with it.



● Features



Turn off



Mirror



Extension Switch

- ◆ You can switch the different modes in this button, choose Mirror or Extension as you like.
- ◆ Our app will automatically select the matched resolution, there is no need to adjust any resolution manually.

**Some video player app will not allow you play video in extension screen.*



High Quality



Low Quality

- ◆ This feature will switch the image quality of WiFi display.
- ◆ High quality mode will transfer better image quality but it will also consume more WiFi bandwidth, if the frame rate is not good with your WiFi environment, we will suggest use Low quality mode to get better frame rate.



Audio On



Audio Off

- ◆ This will allow you to turn on/off the audio transmission during WiFi display.

*Audio transmission is not available in Windows XP.



Music Streaming

- ◆ When you enable music streaming, we will launch file manager so that you can choose the music you want to play to EZCast dongle.
- ◆ You can use EZCast app control bar to adjust the volume and progress bar.

*Only the supported audio formats will be played.

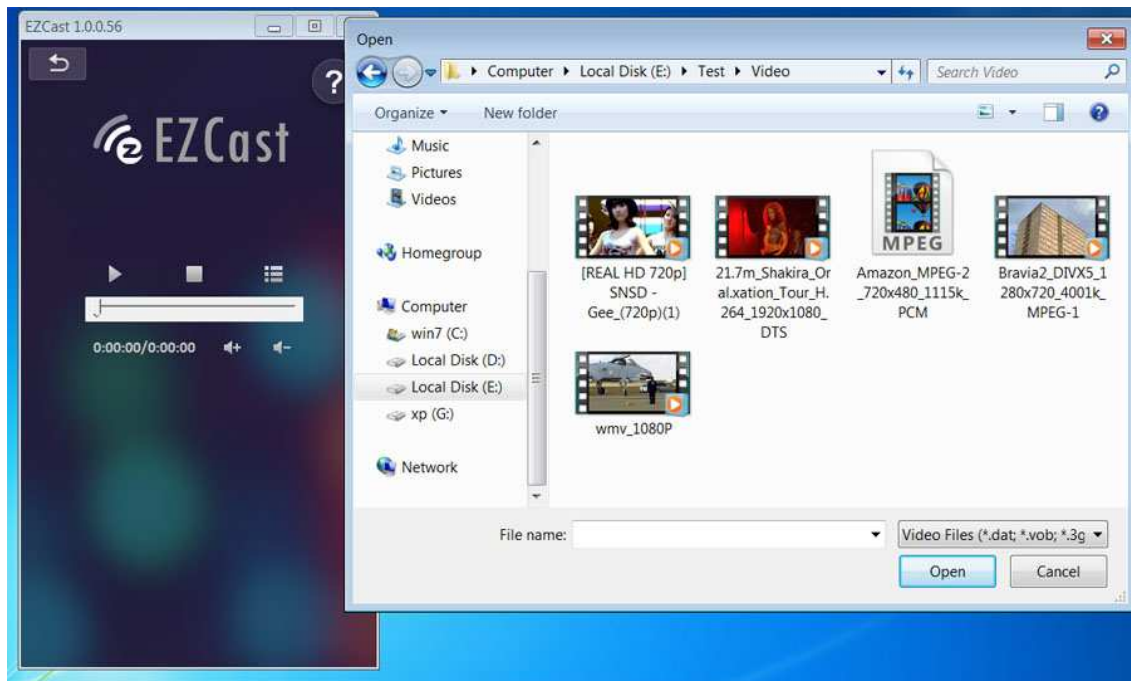


Video Streaming

- ◆ Same as music streaming, we will launch file manager so that you can choose the video files you want to play to EZCast dongle.
- ◆ You can use EZCast app control bar to adjust the volume and

progress bar.

*Only the supported video formats will be played.



Update

- ◆ Update function allows you to check the app version, history and update it up to date.



DLNA

- ◆ DLNA is an industrial standard which allows you to stream multimedia formats through WiFi/LAN.
- ◆ When you click DLNA button, EZCast dongle will enter DMR mode so that you can select the DLNA app to find EZCast and play to it.



Setting

- ◆ In setting function, you can setup EZCast Receiver's configurations including output resolution, change SSID password, setup router connection for internet surfing, boot up priority and update the latest FW over the air.

Mac

● System requirements

CPU	Dual Core Intel Core i1.4 GHz or higher(PowerPC not supported)
Graphic card	Graphic card with 64MB VRAM or above
OS version	Mac OS X 10.8 and above
Recommended Models	Mac Book series and iMac series after E/2011

● Download

1. You can download EZCast Mac OS app from www.iezvu.com



Mac OS Download -Latest version 1.0.70 Date:2014-06-05

EZCast application for Mac version, developed by WinnerWave, displays your Mac OS embedded iMac, Macbook and MacAir wirelessly via EZCast devices or platforms.

Requirements:

Mac OS 10.8 above.

Supports Extension and Mirror with audio transmission.

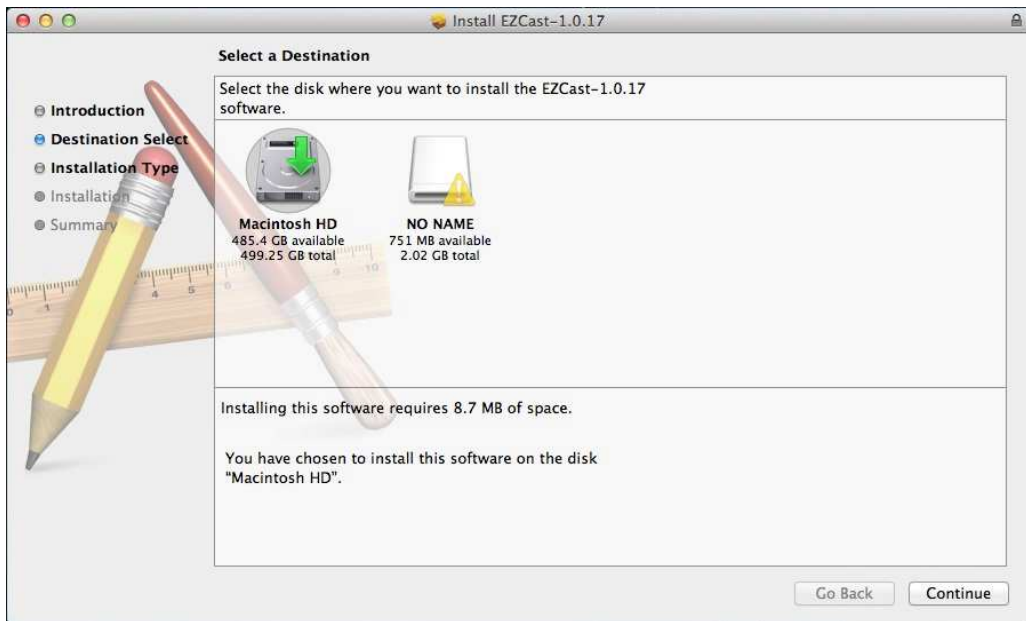
Supports music and video streaming.



2. After download is done, double click it for installation.

● Installation

1. Install EZCast app in to Macintosh HD



2. We will also install Audio driver, please continue installation when the screen pops up.



3. Please restart after installation is done.



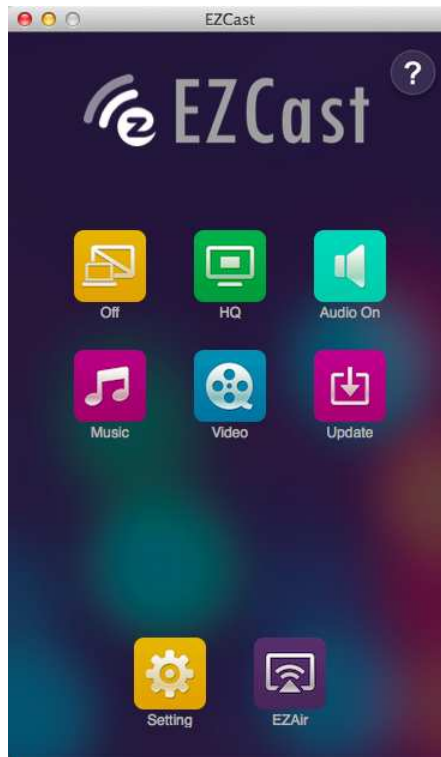
4. After re-booting, you will be able to find EZCast app under applications.

● Connection

1. Please connect WiFi with EZCast dongle before launching EZCast app.



2. If your WiFi is connected with EZCast, and open the app, it will search and discover EZCast dongle automatically and shows app main page as follows:



● Features



Turn off



Mirror



Extension Switch

- ◆ You can switch the different modes in this button, choose Mirror or Extension as you like.
- ◆ Our app will automatically select the matched resolution, there is no need to adjust any resolution manually.

**Some video player app will not allow you play video in extension screen.*



High Quality



Low Quality

- ◆ This feature will switch the image quality of WiFi display.
- ◆ High quality mode will transfer better image quality but it will also consume more WiFi bandwidth, if the frame rate is not good with your WiFi environment, we will suggest use Low quality mode to get better frame rate.



Audio On



Audio Off

- ◆ This will allow you to turn on/off the audio transmission during WiFi display.

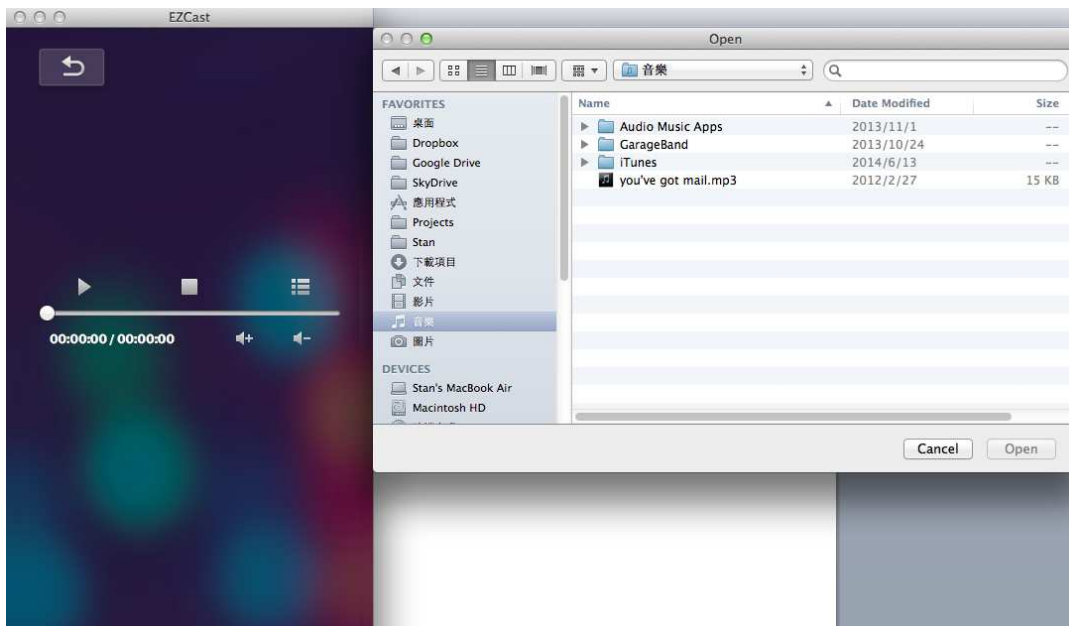
*Audio transmission is not available in Windows XP.



Music Streaming

- ◆ When you enable music streaming, we will launch file manager so that you can choose the music you want to play to EZCast dongle.
- ◆ You can use EZCast app control bar to adjust the volume and progress bar.

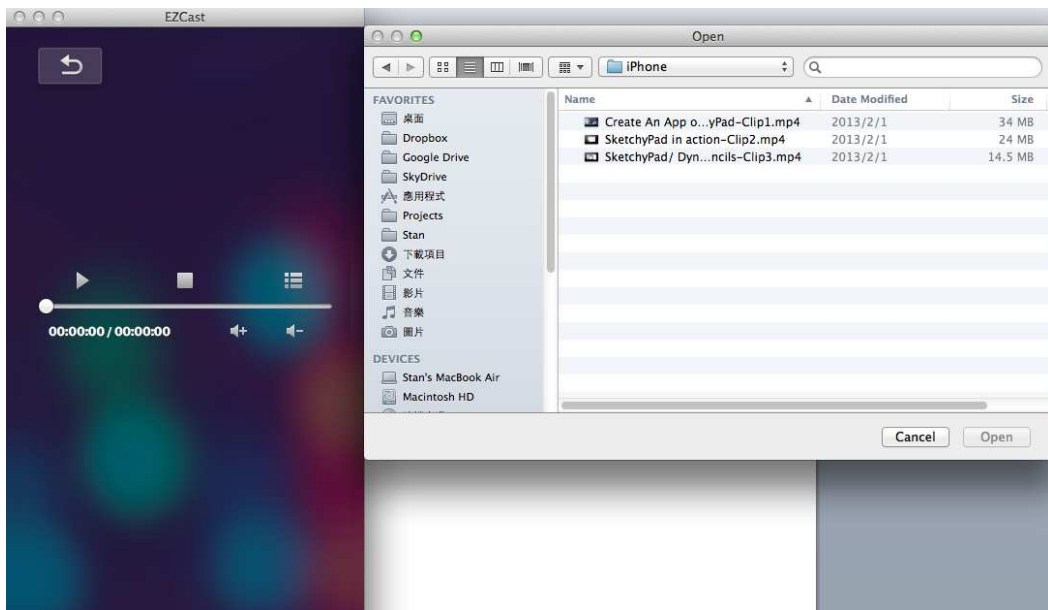
*Only the supported audio formats will be played.



Video Streaming

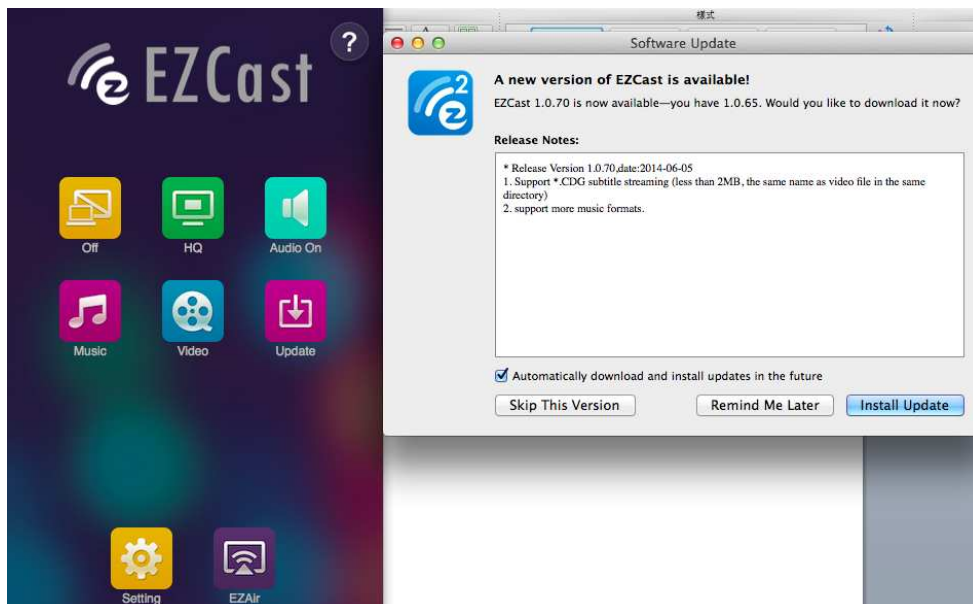
- ◆ Same as music streaming, we will launch file manager so that you can choose the video files you want to play to EZCast dongle.
- ◆ You can use EZCast app control bar to adjust the volume and progress bar.

*Only the supported video formats will be played.



Update

- ◆ Update function allows you to check the app version, history and update it up to date.





Setting

- ◆ In setting function, you can setup EZCast Receiver's configurations including output resolution, change SSID password, setup router connection for internet surfing, boot up priority and update the latest FW over the air.



EZAir

- ◆ EZAir is an powerful mode which can be compatible with AirPlay. You can discover the EZCast device with Mac's AirPlay function under the dongle's standby mode.



*Please be noted the Firmware of EZCast dongle must be higher than 11565 to support AirPlay Mirror