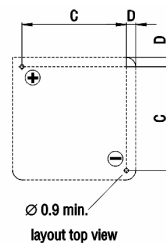
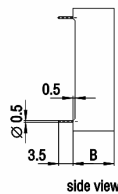
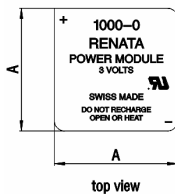


## Power Modules

### Power Modules Horizontal Versions for Soldering (cont.)

Without decoupling diodes



RENATA No.	Nominal capacity (mAh)	Nominal voltage (V)	Encapsulated cell	Weight (g)	Maximum dimensions (mm)			
					A	B	C	D
<b>175-0</b>	225	3	CR2032MFR	6.5	22.0	8.0	17.8	2.1
<b>1000-0</b>	950	3	CR2477N	15.0	30.0	10.0	25.4	2.3

Operating temperature range: -30°C to +70°C (Module 175) ; -40°C to +85°C (Module 1000)  
 Self-discharge rate: less than 1% per year at 25°  
 Specifications - module housings: polyamide 66  
 - soldering contacts: Isotan (55% Cu, 44% Ni-Mn)