

Residual current operated circuit breaker, 4-pole, type A, In: 40 A, 30 mA, Un AC: 400 V



Model	
Product brand name	SENTRON
Product designation	RCCB
Design of the product	Instantaneous
General technical data	
Number of poles	4
Size of installation devices / acc. to DIN 43880	1
Protection against electrical shock	Finger and back-of-hand safe
Short-circuit current rating	10 kA
circuit-breaker / Design	5SV3
Mechanical service life (switching cycles) / typical	10 000
Switching function / short-term delayed	No
Overvoltage category	III
Supply voltage	
Current / at AC / rated value	40 A
<ul style="list-style-type: none"> <li>• Supply voltage / at AC / rated value</li> <li>• Supply voltage / for testing equipment / minimum</li> </ul>	400 V 195 V

- rated value

50 Hz

### Protection class

Protection class IP	IP20, if the distribution board is installed, with connected conductors
---------------------	-------------------------------------------------------------------------

### Switching capacity

Switching capacity current / according to IEC 61008-1 / rated value	0.8 kA
---------------------------------------------------------------------	--------

### Dissipation

Power loss [W] / for rated value of the current / at AC / in hot operating state / per pole	3.9 W
---------------------------------------------------------------------------------------------	-------

### Current

Tripping residual current / rated value	30 mA
-----------------------------------------	-------

Tripping residual / rated value / derated current

• at 40 Cel	40 A
• at 45 Cel	38.1 A
• at 50 Cel	35.59 A
• at 55 Cel	32.29 A
• at 60 Cel	28.19 A
• at 65 Cel	23.3 A
• at 70 Cel	17.62 A

Type of fault current	A
-----------------------	---

I <sup>2</sup> t-value / permissible	58 000 A <sup>2</sup> ·s
--------------------------------------	--------------------------

Surge current resistance / rated value	1 kA
----------------------------------------	------

### Product details

Product feature / silicon-free	Yes
--------------------------------	-----

Product extension / can be installed / supplementary devices	Yes
--------------------------------------------------------------	-----

### Connections

Connectable conductor cross-section	
• solid	0.75 ... 35 mm <sup>2</sup>
• stranded	0.75 ... 35 mm <sup>2</sup>

Tightening torque / with screw-type terminals	2.5 ... 3 N·m
-----------------------------------------------	---------------

Position / of power supply cord	top or bottom
---------------------------------	---------------

### Mechanical Design

Height	90 mm
--------	-------

Width	72 mm
-------	-------

Depth	70 mm
-------	-------

Installation depth	70 mm
--------------------	-------

Number of width units	4
-----------------------	---

Mounting type	DIN rail (REG)
---------------	----------------

Mounting position	any
Net weight	361 g

### Environmental conditions

Ambient temperature	-25 ... +45 °C
• during storage	-40 ... +75 °C

### Certificates

Reference code	
• acc. to DIN EN 61346-2	F
• acc. to DIN EN 81346-2	F

### General Product Approval

### Declaration of Conformity



CCC



IMQ



ÖVE



VDE

[Miscellaneous](#)



EG-Konf.

### other

### Railway

[Miscellaneous](#)

[Vibration and Shock](#)

[Confirmation](#)

### Further information

#### Information- and Downloadcenter (Catalogs, Brochures,...)

<http://www.siemens.com/lowvoltage/catalogs>

#### Industry Mall (Online ordering system)

<https://mall.industry.siemens.com/mall/en/en/Catalog/product?mlfb=5SV3344-6>

#### Service&Support (Manuals, Certificates, Characteristics, FAQs,...)

<https://support.industry.siemens.com/cs/ww/en/ps/5SV3344-6>

#### Image database (product images, 2D dimension drawings, 3D models, device circuit diagrams, ...)

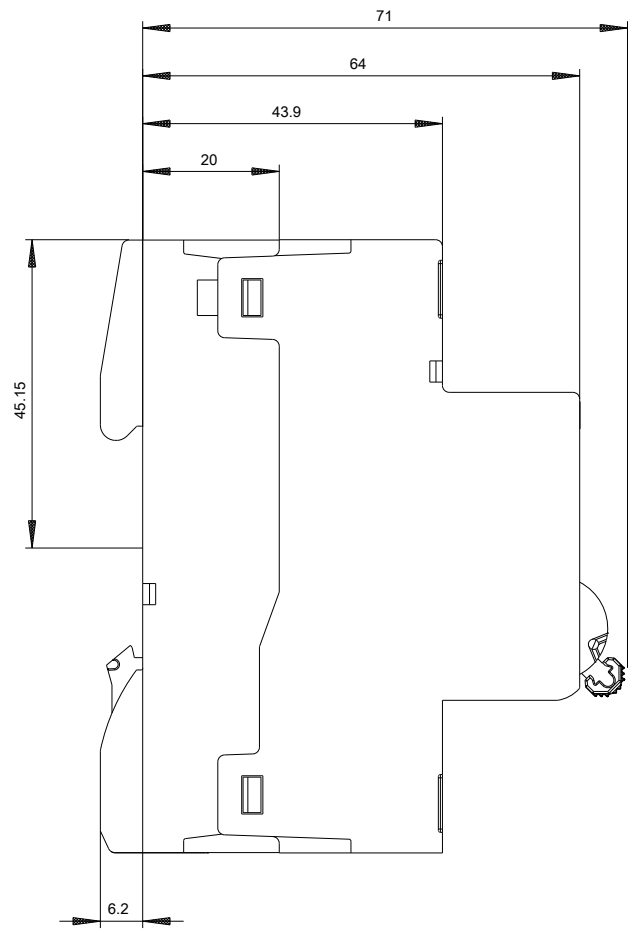
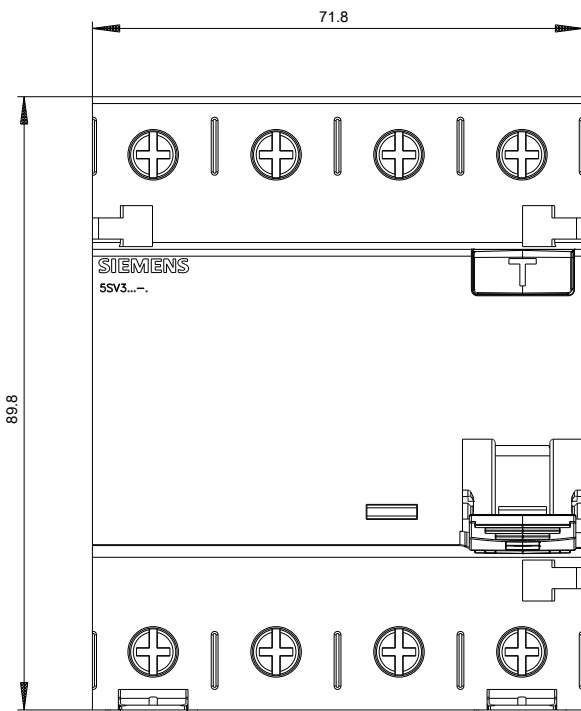
[http://www.automation.siemens.com/bilddb/cax\\_en.aspx?mlfb=5SV3344-6](http://www.automation.siemens.com/bilddb/cax_en.aspx?mlfb=5SV3344-6)

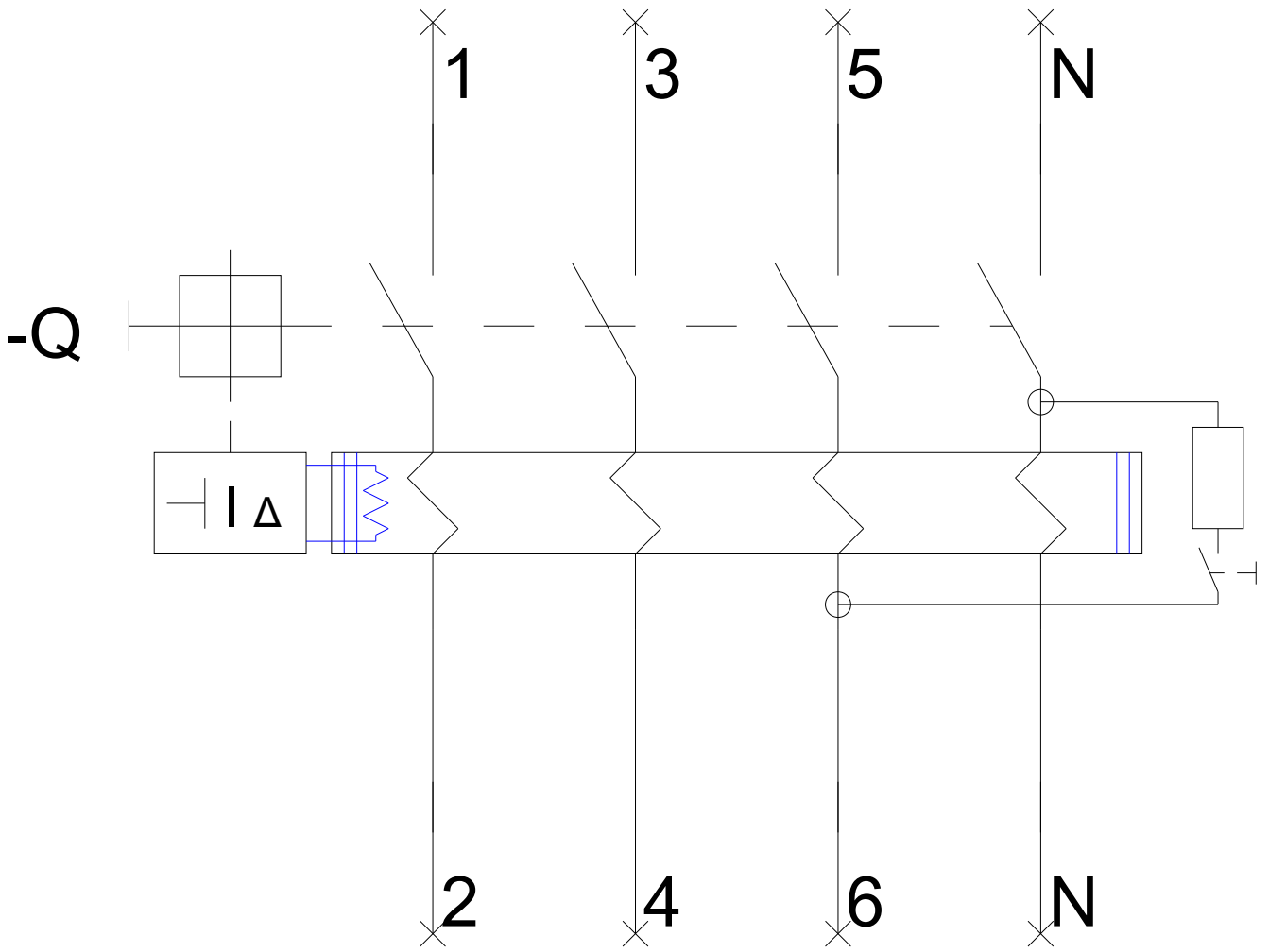
#### CAX-Online-Generator

<http://www.siemens.com/cax>

#### Tender specifications

<http://www.siemens.com/specifications>





-CB

