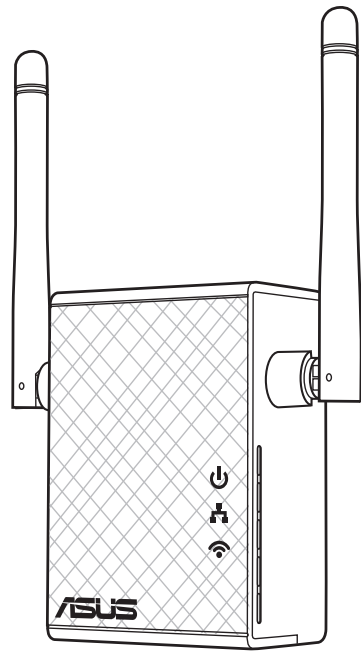


# RP-N12

## Wireless-N300 Range Extender

### Quick Start Guide

Q10319  
Second Edition  
March 2015



- 1. Power LED**  
**On:** RP-N12 is on  
**Off:** RP-N12 is off
- 2. Ethernet LED**  
**On:** Device is connected to the Ethernet port.  
**Off:** Device is not connected to the Ethernet port.
- 3. Wi-Fi LED**  
**Green:** RP-N12 provides the best Wi-Fi extender performance.  
**Red:** RP-N12 provides poor Wi-Fi extender performance.  
**Off:** RP-N12 is not connected to a router/AP.

**NOTE:** Please refer to step 3 in Method One for the best Wi-Fi performance.

## Method One Quick Setup with WPS (Wi-Fi Protected Setup) For router/Access Point(AP) with WPS support

### 1 Power On

Place your RP-N12 near your router/AP and plug it to a power outlet.

Wait until the Wi-Fi LED starts to blink green.

### 2 Connect via WPS (Wi-Fi Protected Setup)

1. Press the WPS button on your Router/AP.
2. Press the WPS button on your RP-N12.

The Wi-Fi LED flashes for about two (2) minutes and then turns solid green or red. The color of the LED indicates the Wi-Fi signal strength.

**NOTE:** Ensure that your router/AP supports WPS. Otherwise, use Method TWO.

### 3 Place in an ideal location

After placing your RP-N12 in an ideal location, RP-N12 connects to your router/AP in about one (1) minute.

**NOTES:**

- Place your RP-N12 between your router/AP and wireless device to get the best extender performance.
- Place your RP-N12 in a location where you can get green Wi-Fi LED.

**IMPORTANT!**

- To minimize interference, keep RP-N12 away from devices like cordless phones, Bluetooth devices and microwave ovens.
- We recommend that you place your RP-N12 in open or spacious location.

## Enjoy!

Your RP-N12's wireless network name (SSID) changes to your existing Wi-Fi network name, ending with **\_RPT** and shares your router/AP's Wireless Password.

## Frequently Asked Questions (FAQ)

### Q1: What should I do if my router does not support WPS?

A1: You can use Method Two to set up RP-N12.

### Q2: Why is that the Wi-Fi LED does not light up after completing Method Two?

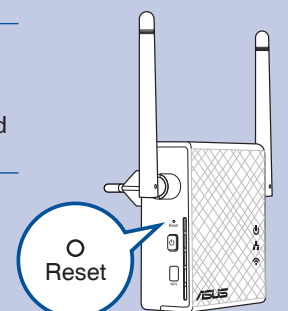
A2: You may have entered the wrong router SSID and password. Reset your RP-N12, double check your router SSID/password, and set up RP-N12 again.

### Q3: Why is it that I cannot see the login page after entering <http://repeater.asus.com> in the browser?

A3: Ensure that your computer is connected to the extender network only, and set your computer to **Obtain an IP address automatically**.

### Q4: How do I reset RP-N12?

A4: Using a pin, press the RESET button for about two (2) seconds. Wait for about five (5) seconds until the Wi-Fi LED flashes red.



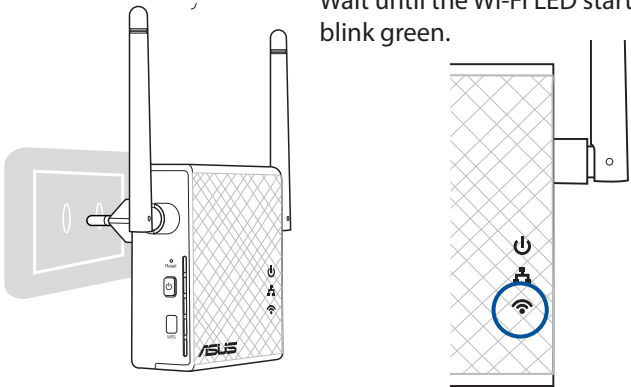
## Method Two

### Set up using your web browser

#### 1 Power On

Place your RP-N12 near your router/AP and plug it to a power outlet.

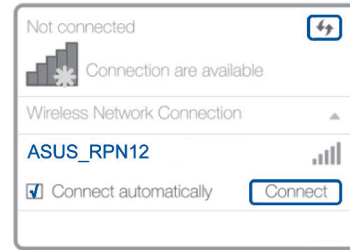
Wait until the Wi-Fi LED starts to blink green.



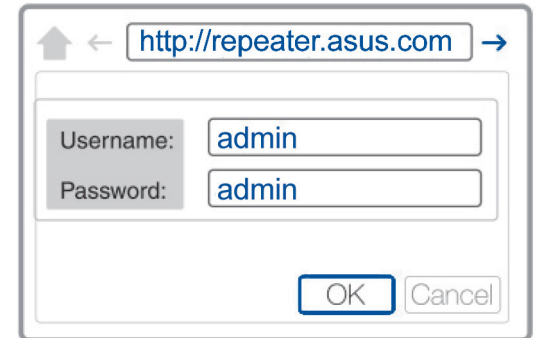
#### 2 Login

Disconnect your Ethernet connection. On your Wi-Fi enabled device, such as your desktop PC/notebook/tablet, find the default network name of your RP-N12 and click or tap **Connect**.

**NOTE:** The screenshot below is from a desktop PC.



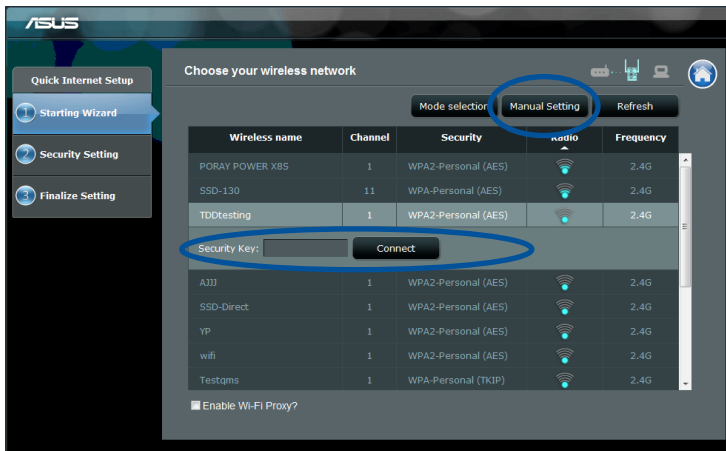
On a web browser, enter <http://repeater.asus.com> to access RP-N12 web GUI (graphical user interface). Enter **admin** as the username and password.



#### 3 Configure RP-N12

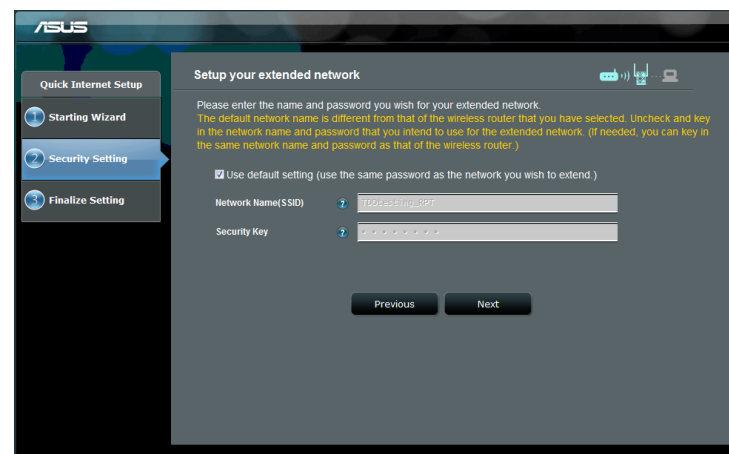
**IMPORTANT!** For the best Wi-Fi extender performance, place your RP-N12 in an ideal location. Refer to Step 3 in Method One

1. On a web browser, enter <http://repeater.asus.com>.
2. Connect to a Wi-Fi network and when prompted, enter the security key. If your Wi-Fi network is hidden, click **Manual setting**.



3. You can either tick **"Use default setting"** or enter the SSID and security key/password for your extended network. When done, click **Next**.

**NOTE:** Your RP-N12's wireless network name (SSID) changes to your existing Wi-Fi network name, ending with **\_RPT** and shares your router/AP's Wireless Password.



4. Connect your wireless devices to the new Extender network.

#### 4 Place in an ideal location

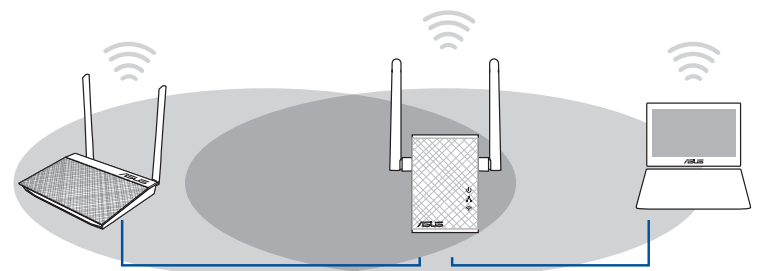
After placing your RP-N12 in an ideal location, RP-N12 connects to your router/AP in about one (1) minute.

##### NOTES:

- Place your RP-N12 between your router/AP and wireless device to get the best extender performance.
- Place your RP-N12 in a location where you can get green Wi-Fi LED.

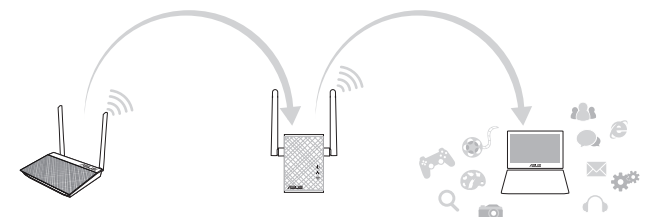
##### IMPORTANT!

- To minimize interference, keep RP-N12 away from devices like cordless phones, Bluetooth devices and microwave ovens.
- We recommend that you place your RP-N12 in open or spacious location.



## Enjoy!

Your RP-N12's wireless network name (SSID) changes to your existing Wi-Fi network name, ending with **\_RPT** and shares your router/AP's Wireless Password.



## Media Bridge (Ethernet Adapter)

Set up RP-N12 via Method One or Method Two, then you can use it as a wireless adapter to connect Ethernet devices such as Blu-ray player, game console, DVR, or smart TV.

