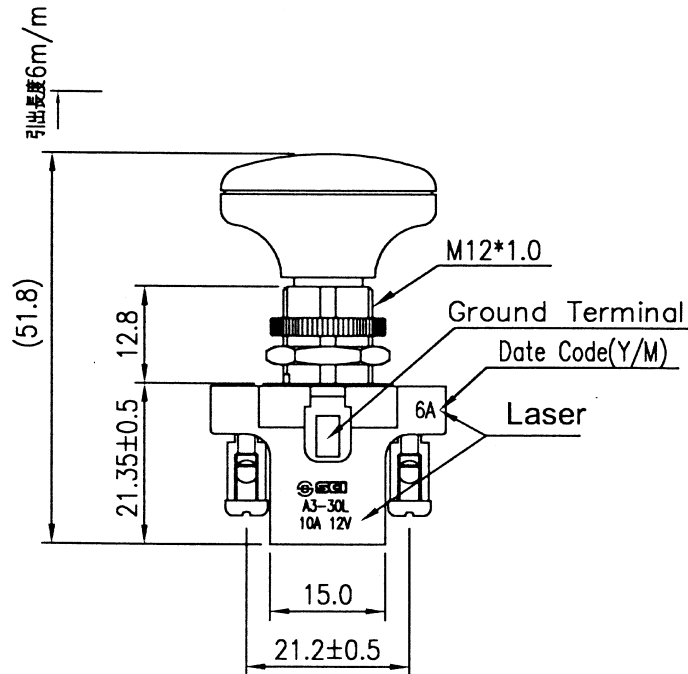
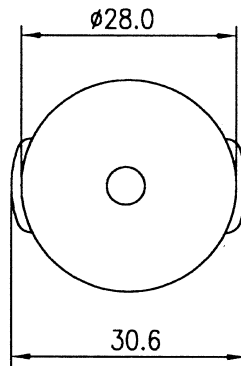


Rating	10A 12V DC	<p><math>\phi 12.2^{+0}_{-0.1}</math></p>	<p>Ground</p>
Contact Resistance	50m ohm Max		
Insulation Resistance	DC 500V 100M ohm Min.		
Dielectric Strength	AC 1500V 1 minute		
Switch Function	PUSH/PULL OFF-ON Whit LED		



1.Tolerances Unless Otherwise Specified  $\pm 0.3$

d:\projects\圖庫\A系列\A3-30L\_1

								△	
								△	
Date	Name	Description						No.	
Drawn	Checked	Approved	SCI BOM No.			Model Name	PUSH PULL SWITCH		
Ruby		<i>Simon</i>	Customer No.			Model No.	A3-30L	Rev. X0	
1/25/16		<i>1/26-16</i>	Unit	mm	Shin Chin Industrial Co., Ltd.				