

XMC™ digital power explorer kit with XMC4200 and XMC1300

Quick Start Guide

The XMC™ digital power explorer kit is an evaluation board that introduces the user into digital power control with Infineon's XMC4000 and XMC1000 families of ARM® Cortex®-M microcontrollers. It is comprised of a power board featuring a synchronous buck converter. Two different control cards can be connected to the power board:

- › XMC4200 control card with HRPWM peripheral and ARM® Cortex®-M4 core for high performance applications
- › XMC1300 control card with XMC™ peripherals and ARM® Cortex®-M0 core for cost optimized solution

Both control cards contain an isolated On-Board Debugger (OBD), so no external debugger is needed to flash and debug the main controller on the control card.

XMC™ digital power explorer kit is designed to support voltage control mode and current control mode (peak current control with slope compensation). By using the master and slave connectors, it is also possible to control a second XMC™ digital power explorer with a single control card.

High resolution PWM (150 ps PWM resolution) peripheral in XMC4200 MCU series is a dedicated peripheral to cover the most demanding requirements in digital power control applications. Additionally, this series integrates 3 analog comparators with automatic slope generation (10-bits resolution) and smart post-processing that permits extremely accurate and flexible control with minimum CPU load and lowest system cost.

XMC1300 MCU features most of the peripherals included in XMC4200 like CCU timers, ADC and serial communication, and also adds analog comparators and a MATH co-processor unit which are tailored to fulfill more cost sensitive applications.

Software examples for this kit are available for download on DAVE™ website (www.infineon.com/dave). These examples demonstrate the capabilities of XMC4000 and XMC1000 MCU series in digital power control applications and ease-of-use and flexibility of DAVE™ software.

User Manuals including detailed hardware description and schematics for all 3 boards and their design files can be found on www.infineon.com/xmc_dp_exp

Step by step installation guide for XMC™ digital power explorer kit

STEP 1

Install DAVE™

DAVE™ is a free and powerful eclipse-based development platform for XMC™ software development. DAVE™ includes GCC compiler from GNU, DAVE™ code engine for automatic code generation and GDB debugger from GNU. DAVE™ offers pre-defined and tested SW components -DAVE™ APPs- and XMC™ Lib - Low Level Drivers (LLDs)- that accelerate the application software creation.

To install DAVE™ follow these steps:

- › Download and execute the latest version of DAVE™ installation file from www.infineon.com/DAVE
- › Follow the installation guidelines that are included in the download package

STEP 2

Plug in a control card

- › Plug one of the control cards into the power board in such way that the control card "noses" goes through the drillings on the power board (see Figure 1)

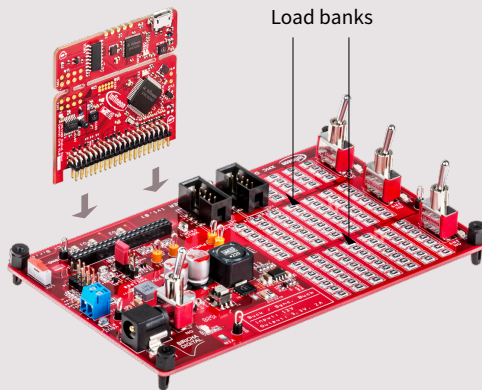


Figure 1



IMPORTANT NOTE: The power board contains resistive load banks (Figure 1).

These loads are purely resistive and during operation may become hot. To prevent injuries, special care is advised when touching the on-board resistor banks during the operation. Any other kind of load, including other resistors, can be connected to the connector "V_{out}" for the purpose of further test or evaluation (blue connector). Using this kit without taking necessary measures for cooling and isolating external loads may cause personal injuries. This evaluation board is intended for use only by qualified and skilled technical staff for laboratory usage. Please read disclaimer page carefully before using this kit.

STEP 3

Connect the control card to the computer and the power supply to the power board

- › Connect the USB cable to your computer and to the control card. Debugger part of the control card is galvanically isolated from the power board. Place the jumper (Figure 3) into XMC1000 only if external slope is needed (i.e. peak current control with XMC1000 set up). Otherwise use XMC4000 position.

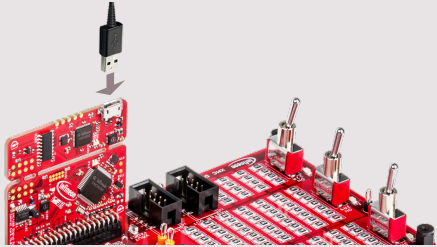


Figure 2

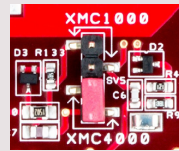


Figure 3

- › Make sure the "power on" switch (SW4) is in "OFF" position. Plug in the power adapter supplied with the kit (12 V, 2 A), into the input jack (J2) on the power board. "Power on" switch can now be moved to the "ON" position

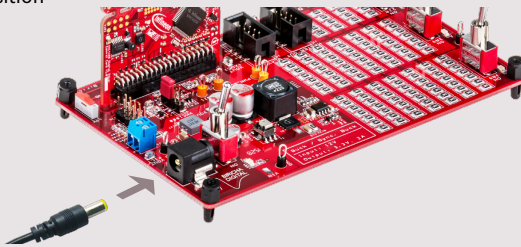


Figure 4



STEP 4

Load an example project into DAVE™


- › Start DAVE™ 4 IDE. You can find the DAVE™ icon on your desktop once you complete the installation described in STEP 1.
- › Define a new workspace or use existing one
- › Download a XMC™ digital power explorer kit project to your workspace by one of these 2 means:
 - Download the example directly from DAVE™ 4 through the "Help" menu → "Install Dave App/Example Library"
 - Select "**Work with: Dave Project Library Manager**" and choose the right example form the list
 - Click "**Next**". Accept terms of license agreement and click "**Finish**"
 - Import the project into workspace by clicking on "**Finish**"
 - You can alternatively download projects from www.infineon.com/DAVE
 - Extract .zip file into your new or existing workspace directory
 - Import the project into DAVE™ through the "File" → "Import", select "**Infineon**" → "**Dave Project**" and browse the workspace directory

STEP 5


Compile and run the examples on XMC™ microcontroller

- 1 Compile the project by clicking  icon
- 2 Click icon  to open "Debug Configuration" dialog

Step 3 – 4 must be done only when starting a new project.

- 3 To create a new debug configuration click on 
- 4 Start debug session by clicking "Debug"

Make sure at this point that the "power on" switch in the power board - SW4 - is in the "ON" position. The debugger starts code download and switches from "DAVE CE" perspective to the "Debug" perspective.

- 5 Click "Resume"  to restart the code execution
- 6 The buck converter is now running

Product summary

Type	Description	Ordering code (OPN)
XMC4200-F64X256	80 MHz ARM® Cortex®-M4F with DSP instructions and Floating Point Unit (FPU), 256 kB flash, 40 kB RAM, 1 kB cash, rich analog mixed signal, advanced timer/HRPWM unit and communication peripherals in PG-LQFP-64 package	XMC4200F64K256ABXQSA1
XMC1302-T038X0200	32 MHz ARM® Cortex®-M0 with MATH co-processor, 200 kB flash, 16 kB RAM, rich analog mixed signal, timer/PWM and communication peripherals in PG-TSSOP-38 package	XMC1302T038X0200AAXUMA1
XMC4200-Q48X256	XMC4200 with 256 kB flash, 40 kB RAM, 1 kB cash in PG-VQFN-48 package, used as on-board debugger controller	XMC4200Q48K256ABXUMA1
BSC0924NDI	Dual N-channel (high-side and low-side) OptiMOS™ MOSFET	BSC0924NDI
IRS2011SPBF	High-side and low-side MOSFETs gate driver IC	IRS2011SPBF
IFX1763XEJ V33	Wide range input voltage, low dropout voltage regulator supplying up to 500 mA	IFX1763XEJV33XUMA1

Features

- › Input voltage 12 V DC and max output current 2 A. Target output voltage: 3.3 V.
- › Power board comprised of a synchronous buck converter (12 V to 3.3 V max 2 A), controlled by either XMC1300 or XMC4200 microcontroller
- › Switchable loads on board for easy performance test including option for network analyzers test
- › Supports voltage control mode and peak current control mode (with slope compensation)
- › Optional PMBus™ connection

Applications

- › Switched mode power supplies
- › Lighting power supplies

Benefits

- › Fast prototyping of SMPS in synchronous buck topology with different control modes
- › Full BOM list, design files and easy-to-use reference software available

Useful links

www.infineon.com/dave

www.infineon.com/xmc

www.infineon.com/xmc-dev

www.infineon.com/xmc_dp_exp



Dear Customer,

Evaluation boards are provided "as is". Infineon Technologies disclaims any and all warranties, express or implied, including but not limited to any warranties of non-compliance with any specification, non infringement of third party rights and implied warranties of fitness for any purpose or for merchantability.

Evaluation boards are not commercial products and are solely intended to be used for evaluation and testing purposes. They shall not to be used for reliability testing or production. The customer shall ensure that each evaluation board is handled in a way which is compliant with all relevant requirements and standards in the country in which it is operated.

The evaluation board is intended for use only by qualified and skilled technical staff for laboratory usage and shall be used and managed according to the terms and conditions set forth in the related documentation provided with the evaluation board.

The customer accepts the entire risk arising out of the use of the evaluation board for any purpose for which the evaluation board is not intended, including but not limited to any further processing or distribution of the evaluation board. Infineon will not accept any liability or product warranty for these evaluation boards. The customer undertakes to indemnify and hold Infineon Technologies harmless from any third party claims in connection with or arising out of the use and/or handling of the evaluation boards by the customer.

In case of any questions, please contact your local sales partner.

Published by
Infineon Technologies AG
85579 Neubiberg, Germany

© 2015 Infineon Technologies AG.
All Rights Reserved.

Visit us:
www.infineon.com

Order Number: KIT_XMC_DP_EXP_01
SP001343072
Date: 10 / 2015

Disclaimer

The information given in this document shall in no event be regarded as a guarantee of conditions or characteristics ("Beschaffenheitsgarantie").

With respect to any examples or hints given herein, any typical values stated herein and/or any information regarding the application of the device, Infineon Technologies hereby disclaims any and all warranties and liabilities of any kind, including without limitation warranties of non-infringement of intellectual property rights of any third party.

Information

or further information on technology, delivery terms and conditions and prices please contact your nearest Infineon Technologies Office (www.infineon.com)

Warnings

Due to technical requirements components may contain dangerous substances. For information on the types in question please contact your nearest Infineon Technologies office.

Infineon Technologies components may only be used in life-support devices or systems with the express written approval of Infineon Technologies, if a failure of such components can reasonably be expected to cause the failure of that life-support device or system, or to affect the safety or effectiveness of that device or system. Life support devices or systems are intended to be implanted in the human body, or to support and/or maintain and sustain and/or protect human life. If they fail, it is reasonable to assume that the health of the user or other persons may be endangered.