



Smoke Alarm

FERION 1000 O



BOSCH

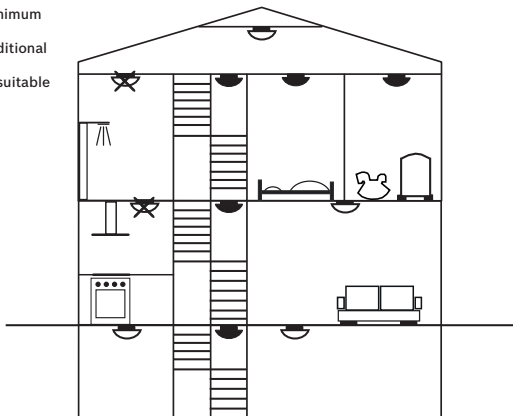
en

Table of contents

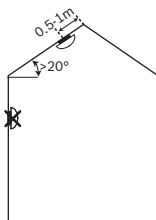
1	Graphics	4
2	Introduction	6
3	Mounting	7
4	Maintenance	9
5	Technical data	10
6	Customer Service	11

1 Graphics

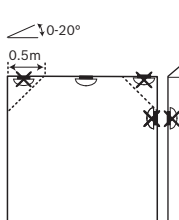
- (1)
-  minimum
 -  additional
 -  unsuitable



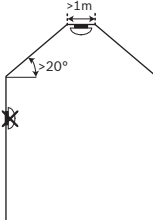
(2.A)



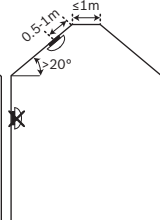
(2.B)



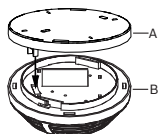
(2.C)



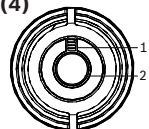
(2.D)



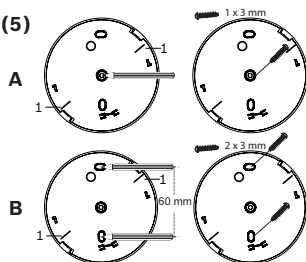
(3)



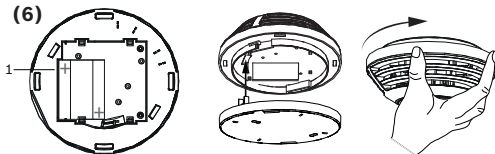
(4)



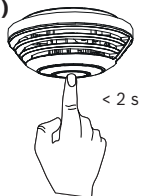
(5)



(6)



(7)



2 Introduction

The FERION 1000 O smoke alarm device with built-in siren (4.1), big button for operation (4.2) and replaceable batteries (6.1) is solely designed for residential applications. The device reliably warns you of the emergence of a fire in your house or flat. If the smoke emissions exceed a certain limit, an alarm is raised. More information, CE declaration, and declaration of performance is available on www.boschsecurity.com/ferion/.

The safety notes and instructions contained in this manual must be observed in order to ensure proper function. The device must not be modified in any way. If you have any questions about the method of operation, safety or connection of the device, consult the place of purchase.

Caution!



Only use original parts. Only use installation materials as recommended in this manual. Do not paint over the device! Do not cover it with wallpaper! Replacement after 10 years recommended.

Notice!



Do not use if there are signs of damage, or in case of malfunction. Return defective devices to the place of purchase.



Used batteries or old devices are not to be disposed of with the household waste. Dispose of them according to the guidelines for electric and electronic waste at the local collection points.

Parts included

1 smoke alarm device: base (3.A) and detector head (3.B), 2 batteries, fastening material: 1 screw, 1 plug

3 Mounting



Notice!

The device is designed for mounting according to DIN 14676 on flat or slanted ceiling. Wall mounting is not allowed.

Perform the following steps. Find exact information about the single steps on the following pages in this manual. See also the graphics at the beginning of this manual.

1. Determination of mounting locations. (1) Observe the information regarding *Unsuitable locations for mounting*, page 8, and regarding *Audibility*, page 8. Each device is to be mounted horizontally on the ceiling in centered position with a minimum distance of 0.5m to walls and objects. On slanted ceilings $>20^\circ$ it is to be mounted 0.5m to 1m from the top of the ceiling. (2.A), (2.B), (2.C), (2.D)
2. For each device: *Inserting batteries*, page 8. Observe the polarity. (6.1)

3. For each device: *Mounting the base.* (5) Observe the marks (5.1) for alignment with BOSCH label/siren.
4. *Functional check, page 9,* for each device after setting it up into operation. (6) (7)

Unsuitable locations for mounting

- Kitchen/bathroom (steam)
- Rooms with open fireplaces (fumes)
- In the immediate vicinity of halogen lamps, transformers, fluorescent or energy-saving lamps
- Garages (exhaust fumes)
- Dusty and dirty rooms
- In the vicinity of windows, ventilators (air movement)
- In the vicinity of areas where people smoke

Audibility

You must hear an alarm at any place in your building or flat. The alarm really has to wake you up. If necessary adapt the number of the devices for achieving audibility in your whole building or flat.

Inserting batteries



Notice!

The detector head will only latch into the base when the batteries are inserted.

Insert new FUJITSU LR6 G or GASSNER LR6 batteries in the battery compartments, observing the polarity shown. (6.1)

Mounting the base

Mount the base with one central screw and plug. (5.A), or optionally use two screws and plugs. (5.B) To set the device into operation you screw the detector head to its base by twisting it clockwise until it latches. (6)

4 Maintenance

Functional check

A visual inspection and a functional check must be performed for each device monthly. After the functional check the device is muted for 10 min, even when an alarm will be triggered. After 10 min the device will switch to normal mode again.

- The device is in normal mode (no signal). To perform the functional check press and release the button (< 2 s). (6) -> Siren sounds 3 times ≥ 85 dB(A).

If the functional check fails the device is defective and must be replaced.

Siren off (alarm signal)

If you press and release the button (< 2 s) of a device that has triggered an alarm, then the device stops sounding. After 10 min the device will switch to normal mode again.

Battery replacement

If the siren sounds short every 43 s (weak battery) you have to replace the batteries.

1. Remove the head and insert new FUJITSU LR6 G or GASSNER LR6 batteries in the battery compartments, observing the polarity shown. (6.1)

2. Screw the head to its base again and perform the functional check.

Polluted smoke chamber

If the siren sounds short 3 times every 43 s (polluted smoke chamber), then you have to replace the device.

5 Technical data

Sound pressure level at a distance of 3m in dB(A)	≥85
Power supply (2 x 1.5V, replaceable batteries)	GASSNER LR6 FUJITSU LR6 G
Dimensions (diameter x height, mm)	119 x 50
Weight, incl. batteries (g)	168
Protection category (EN60529)	IP20
Operating temperature (°C)*	0 ... +45
Storage temperature (°C)*	-10 ... +55
Relative humidity (% , noncondensing)	93
Guarantee (without batteries, y)**	5
Typical battery lifetime (y) ***	5

* high temperature (> +30 °C) reduce the battery lifetime

** during standard usage and operation as stated in the user guide

*** based on typical storage temperature (-5 ... +30 °C) and typical operating temperature (+5 ... +30 °C) and monthly functional tests

Certification	CE ,
Harmonized standards	EN 14604:2009-02

Signals

Mode	Audible
Normal	-
Functional test OK	3 x ≥ 85 db(A) / 4 s
Alarm	3 x ≥ 85 db(A) / 4 s
Weak battery	1 x short / 43 s
Polluted smoke chamber	3 x short / 43 s

6 Customer Service

Replacement of the product is only possible with proof of purchase during guarantee.

Great Britain

Robert Bosch Ltd. (B.S.C.)
P.O. Box 98
Broadwater Park
North Orbital Road
Denham
Uxbridge
UB 9 5HJ
Tel. Service:
(0344) 7360109
E-Mail:
boschservicecentre@bosch.co
m

Ireland

Origo Ltd.
Unit 23 Magna Drive
Magna Business Park
City West
Dublin 24
Tel. Service:
(01) 4666700
Fax: (01) 4666888

Bosch Sicherheitssysteme GmbH

Robert-Bosch-Ring 5

85630 Grasbrunn

Germany

www.boschsecurity.com

© Bosch Sicherheitssysteme GmbH, 2015