

# Sensor/actuator box - SACB-6/ 6-L-M23 - 1692420

Please be informed that the data shown in this PDF Document is generated from our Online Catalog. Please find the complete data in the user's documentation. Our General Terms of Use for Downloads are valid (<http://download.phoenixcontact.com>)



Sensor/actuator box, Application: Standard, Connection method: M12 socket Plastic, Number of slots: 6, Number of positions: 4, Coding: A - standard, Slot assignment: single, Status indication: Yes, pnp; Master cable connection: M23 plug connection 90°, Shielding: No

The illustration shows a version with 8 slots

## Your advantages

- Safety in the field, thanks to molded housing and high degree of protection
- Flexible, distributed bundling of signals in one master cable
- Convenient: increased machine availability thanks to quick and easy diagnostics

## Key commercial data

package_quantity	1
GTIN	4017918177881

## Technical data

### General

Rated voltage	24 V DC
Max. operating voltage $U_{max}$	30 V DC
Current carrying capacity per I/O signal	2 A
Current carrying capacity per slot	4 A
Total rated current	12 A
Number of positions	4
Number of slots	6
Flammability rating according to UL 94	V0
Sensor/actuator connection system	M12 socket

### Ambient conditions

Degree of protection	IP65
Degree of protection	IP67
Ambient temperature (operation)	-20 °C ... 75 °C

### Local diagnostics function

Local diagnostics	Supply voltage Green LED
Local diagnostics	Status display I/O Yellow LED

### Master cable data/connection data

Connection method	M23 plug connection
-------------------	---------------------

# Sensor/actuator box - SACB-6/ 6-L-M23 - 1692420

## Technical data

### Master cable data/connection data

Tightening torque slot sensor/actuator cable	0.4 Nm
--	--------

### Insulation material

Housing material	PA
Contact material	CuSn
Contact surface material	Ni/Au
Contact carrier material	PA
Material of contact, master cable side	CU alloy
Material of contact surface, master cable side	Gold-plated
Material of threaded sleeve	PA
O-ring material	NBR

### Pin assignment

Slot/position = Wire color or connection	1 / 4 (A) = 1
Slot/position = Wire color or connection	2 / 4 (A) = 2
Slot/position = Wire color or connection	3 / 4 (A) = 3
Slot/position = Wire color or connection	4 / 4 (A) = 4
Slot/position = Wire color or connection	5 / 4 (A) = 5
Slot/position = Wire color or connection	6 / 4 (A) = 6
Slot/position = Wire color or connection	1-6 / 1 (+ 24 V) = 11
Slot/position = Wire color or connection	1-6 / 3 (0 V) = 9+10
Slot/position = Wire color or connection	1-6 / 5 (PE) = 12

### Standards and Regulations

Connection in acc. with standard	CUL
Flammability rating according to UL 94	V0

## Classifications

### eCl@ss

eCl@ss 4.0	27140815
eCl@ss 4.1	27140815
eCl@ss 5.0	27143423
eCl@ss 5.1	27143423
eCl@ss 6.0	27143423
eCl@ss 7.0	27449001
eCl@ss 8.0	27279219
eCl@ss 9.0	27440108

### ETIM

ETIM 2.0	EC000200
ETIM 3.0	EC001856
ETIM 4.0	EC002585
ETIM 5.0	EC002585

# Sensor/actuator box - SACB-6/ 6-L-M23 - 1692420

## Classifications


### UNSPSC


<b>UNSPSC 6.01</b>	31261501
<b>UNSPSC 7.0901</b>	31261501
<b>UNSPSC 11</b>	31261501
<b>UNSPSC 12.01</b>	31261501
<b>UNSPSC 13.2</b>	31261501

## Approvals


UL Recognized / cUL Recognized / EAC / cULus Recognized /

### Approval details

<b>UL Recognized s</b> 	
Nominal voltage UN	24 V
Nominal current IN	
mm <sup>2</sup> /AWG/kcmil	22-16

<b>cUL Recognized s</b> 	
Nominal voltage UN	24 V
Nominal current IN	
mm <sup>2</sup> /AWG/kcmil	22-16

<b>EAC s</b>
--------------

<b>cULus Recognized s</b> 
---

## Accessories

**Master cable, assembled**

## Sensor/actuator box - SACB-6/ 6-L-M23 - 1692420

### Accessories

RCK-TGUM/BL12/ 5,0PUR-U - 1684014



RCK-TGUM/BL12/10,0PUR-U - 1684027



RCK-TWUM/BL12/ 5,0PUR-U - 1684030



RCK-TWUM/BL12/10,0PUR-U - 1684043



V-RC/TGUM 11/KVD 11/LBL 12 - 1000041



V-RC/TWUM 11/KVD 11/LBL 12 - 1000043



## Sensor/actuator box - SACB-6/ 6-L-M23 - 1692420

### Accessories

---

#### Assembly tool

PLUSCON-RCS - 1665062



#### T-distributor

RC-T 12/1BU2ST - 1685107



#### Circular connector (cable-side)

CA-12S1N8A8007 - 1619708



CA-12S1N8A8008 - 1619645



#### Protective cap

## Sensor/actuator box - SACB-6/ 6-L-M23 - 1692420

### Accessories

MSK 1 - 1665897



MSK 2 - 1665907



KSK 1 - 1685013



PROT-M12 - 1680539



### Device marking

ZBN 18:UNBEDRUCKT - 2809128



### Torque tool

# Sensor/actuator box - SACB-6/ 6-L-M23 - 1692420

## Accessories

TSD 04 SAC - 1208429



---

## Screwdriver tools

SAC BIT M12-D15 - 1208432



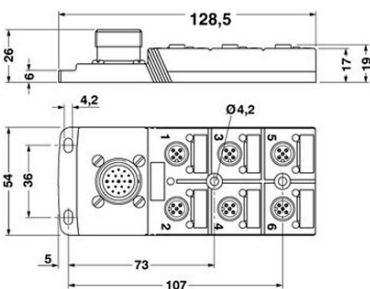
SACC BIT M12-D20 - 1208445



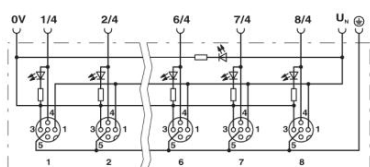
---

## Drawings

### Dimensional drawing

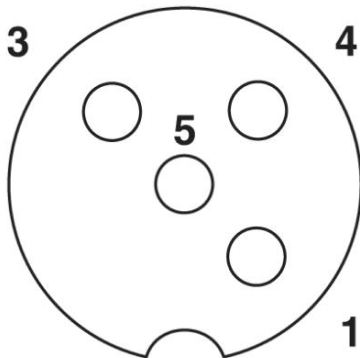


### Circuit diagram



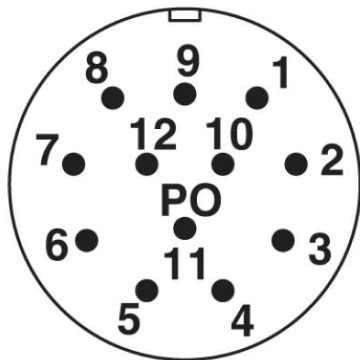
## Sensor/actuator box - SACB-6/ 6-L-M23 - 1692420

Schematic diagram



M12 slot, socket, 4-pos.

Schematic diagram



M23 plug connection pin, 12-pos.

Phoenix Contact 2016 © - all rights reserved  
<http://www.phoenixcontact.com>