

Always there to help you

Register your product and get support at
www.philips.com/support



BM60



User manual

PHILIPS

Contents

1 Important	2
Safety	2

2 Your Micro Music System	3
Introduction	3
What's in the box	3
Overview of the main unit	4
Overview of the remote control	5

3 Get started	7
Connect speakers	7
Connect FM antenna	7
Connect power	7
Prepare the remote control	8
Set clock	8
Turn on	8

4 Play	9
Play in single mode	9
Play in group mode	12

5 Adjust sound	15
Select a preset sound effect	15
Adjust volume level	15
Mute sound	15

6 Other features	16
Set the alarm timer	16
Set the sleep timer	16
Listen from an external device	16
Listen through a headphone	17
Update firmware	17

7 Product information	18
Specifications	18
USB playability information	19
Supported MP3 disc formats	19

8 Troubleshooting	20
--------------------------	-----------

9 Notice	22
Declaration of conformity	22
Written offer	23

1 Important

Safety



This 'bolt of lightning' indicates uninsulated material within the device may cause an electrical shock. For the safety of everyone in your household, please do not remove the covering.

The 'exclamation mark' calls attention to features for which you should read the enclosed literature closely to prevent operating and maintenance problems.

WARNING: To reduce the risk of fire or electric shock, the device should not be exposed to rain or moisture and objects filled with liquids, such as vases, should not be placed on the device.

CAUTION: To prevent electric shock, fully insert the plug. (For regions with polarized plugs: To prevent electric shock, match wide blade to wide slot.)

Warning

- Never remove the casing of this apparatus.
- Never lubricate any part of this apparatus.
- Never look into the laser beam inside this apparatus.
- Never place this apparatus on other electrical equipment.
- Keep this apparatus away from direct sunlight, naked flames or heat.
- Ensure that you always have easy access to the power cord, plug or adaptor to disconnect the apparatus from the power.

the disconnect device shall remain readily operable.

- Make sure that there is enough free space around the product for ventilation.
- Battery usage **CAUTION** – To prevent battery leakage which may result in bodily injury, property damage, or damage to the unit:
 - Install all batteries correctly, + and - as marked on the unit.
 - Batteries (packed or installed) shall not be exposed to excessive heat such as sunshine, fire or the like.
 - Remove batteries when the unit is not used for a long time.
- Only use attachments/accessories specified by the manufacturer:

Hearing safety

Caution

- To avoid hearing damage, limit the time you use the headphones at high volume and set the volume to a safe level. The louder the volume, the shorter is the safe listening time.

Be sure to observe the following guidelines when using your headphones.

- Listen at reasonable volumes for reasonable periods of time.
- Be careful not to adjust the volume as your hearing adapts.
- Do not turn up the volume so high that you can't hear what's around you.
- You should use caution or temporarily discontinue use in potentially hazardous situations.
- Excessive sound pressure from earphones and headphones can cause hearing loss.

- The device shall not be exposed to dripping or splashing.
- Do not place any source of danger on the device (e.g. liquid filled objects, lit candles).
- Where the MAINS plug or an appliance coupler is used as the disconnect device,

2 Your Micro Music System

Congratulations on your purchase, and welcome to Philips! To fully benefit from the support that Philips offers, register your product at www.philips.com/welcome.

Introduction

With this unit, you can:

- enjoy audio from discs, Bluetooth-enabled devices, USB storage devices, or other external devices;
- listen to music everywhere in your home through a group of izzylink-compatible multiroom speakers (not supplied);
- listen to FM radio stations.

You can select one of the following sound effect:

- Balanced, Warm, Bright, Clear, and Powerful

The unit supports these media formats:

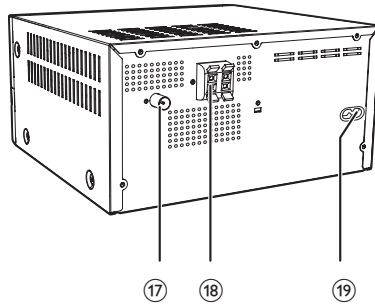
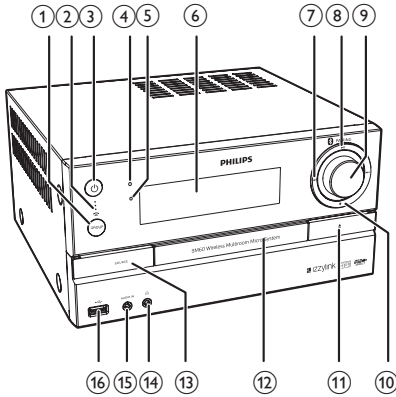


What's in the box

Check and identify the contents of your package:

- Main unit
- Remote control (with one AAA battery)
- 2 x speakers with cables
- 1 x FM wire antenna
- Printed materials

Overview of the main unit



① GROUP button/indicator

- Press and hold to group with another izzylink-compatible multiroom speaker.
- Press to exit or return to a group.
- Flashes green during grouping.
- Turns solid white after successful grouping (for the master).
- Turns solid green after successful grouping (for the slaves).
- Flashes green when the unit acts as a slave and is looking for the master.

② Signal strength indicator

- Indicates the signal strength of group connection.

③

- Turn the unit on or off.
- Switch to standby mode or ECO mode.

④ Bluetooth/ECO indicator

- Indicate the Bluetooth connection status.
- Lights up red in ECO mode.

⑤ IR sensor

- The sensor that receives infrared signals from the remote control.

⑥ Display panel

⑦

- Skip to the previous or next title, chapter, track, or file.
- Search within a track/disc.
- Tune to a radio station.
- Adjust time.

⑧ PAIRING

- Start, pause, or resume play.
- In Bluetooth mode with two devices connected, press and hold for three seconds to disconnect the device that is not playing, and then enter pairing mode.
- In Bluetooth mode with one device connected, press and hold for three seconds to enter pairing mode.

⑨ Volume knob

- Adjust volume.

⑩

- Stop play or erase a program.



⑪

- Open/close the disc compartment.

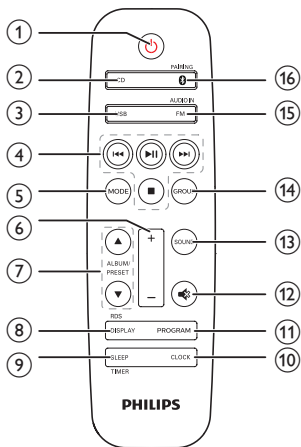
⑫ Disc compartment


⑬ SOURCE


- Press to select a source: DISC, USB, TUNER, BT, AUDIO IN.

- ⑭  Headphone socket.
- ⑮ **AUDIO IN**
 - Audio input socket(3.5mm) for an external audio device.
- ⑯  USB socket.
- ⑰ **FM AERIAL**
 - FM antenna socket.
- ⑱ **SPEAKER OUT**
 - Socket for speaker connection.
- ⑲ **AC MAINS~**
 - Power socket.

Overview of the remote control



- ①  Turn the unit on or off.
Switch to standby mode or ECO mode.
- ② **CD**
 - Select the DISC source.
- ③ **USB**
 - Press to select the USB source.

- ④ **Keys for basic playback control**
 - ▶|| Start, pause, or resume play.
 - Stop play or erase a program.
 - ◀◀ / ▶▶ Skip to the previous or next title, chapter, track, or file.
 - Search within a track/disc.
 - Tune to a radio station.
 - Adjust time.
- ⑤ **MODE**
 - Select a repeat play mode, or play tracks randomly.
- ⑥ **+/-**
 - Adjust volume.
- ⑦ **ALBUM/PRESET ▲ / ▼**
 - Select a preset radio station.
 - Skip to the previous/next album.
- ⑧ **DISPLAY/RDS**
 - During playback, display the play information.
 - For selected FM radio stations, display RDS information(if available).
- ⑨ **SLEEP/TIMER**
 - Set sleep timer.
 - Set alarm timer.
- ⑩ **CLOCK**
 - Set the clock.
 - View clock information.
- ⑪ **PROGRAM**
 - Program tracks.
 - Program radio stations.
- ⑫  Mute or restore volume.
- ⑬ **SOUND**
 - Select a preset sound effect.
- ⑭ **GROUP**
 - Press and hold to group with another izzylink-compatible multiroom speaker.
 - Press to exit or return to a group.

⑮ **FM/AUDIO IN**

- Press repeatedly to select the FM or AUDIO IN source.

⑯ **Ⓚ PAIRING**

- Press to select the BT (Bluetooth) source.
- In Bluetooth mode with two devices connected, press and hold for three seconds to disconnect the device that is not playing, and then enter pairing mode.
- In Bluetooth mode with one device connected, press and hold for three seconds to enter pairing mode

3 Get started

! Caution

- Use of controls or adjustments or performance of procedures other than herein may result in hazardous laser exposure or other unsafe operation.

Always follow the instructions in this chapter in sequence.

Connect speakers

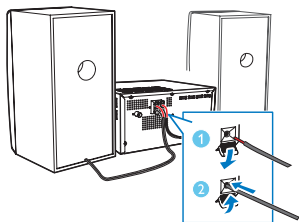
≡ Note

- Insert the stripped portion of each speaker wire into the socket completely.
- For better sound quality, use the supplied speakers only.

- 1 For the right speaker, find the sockets on the back of the main unit marked "R".
- 2 Insert the red wire into the red (+) socket, and the black wire into the black (-) socket.
- 3 For the left speaker, find the sockets on the main unit marked "L".
- 4 Repeat step 2 to insert the left speaker wire.

To insert each speaker wire:

- 1 Hold down the socket flap.
- 2 Insert the speaker wire fully.
- 3 Release the socket flap.

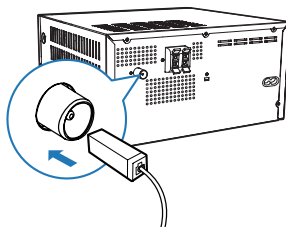


Connect FM antenna

* Tip

- For optimal reception, fully extend and adjust the position of the antenna.
- For better FM stereo reception, connect an outdoor FM antenna to the **FM AERIAL** socket.

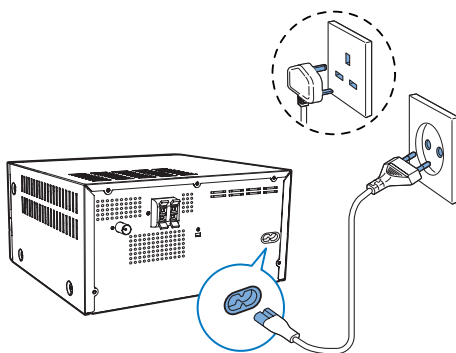
- Connect the supplied FM antenna to the **FM AERIAL** socket on back of the unit.



Connect power

! Caution

- Risk of product damage! Ensure that the power supply voltage corresponds to the voltage printed on the back or the underside of the unit.
- Before you connect the AC power cord, ensure that you have completed all the other connections.



- Connect the power cable to the wall socket.

Prepare the remote control

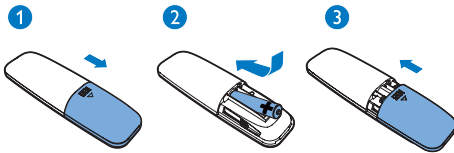


Caution

- Risk of product damage! When the remote control is not used for long periods, remove the batteries.

To insert the remote control battery:

- 1 Open the battery compartment.
- 2 Insert the supplied AAA battery with correct polarity (+/-) as indicated.
- 3 Close the battery compartment.



Set clock

- 1 In standby mode, press and hold **CLOCK** on the remote control for three seconds.
↳ The [24H] or [12H] hour format is displayed.
- 2 Press **⏮** / **⏭** to select the [24H] or [12H] hour format.
- 3 Press **CLOCK** to confirm.
↳ The hour digits are displayed and begin to blink.
- 4 Press **⏮** / **⏭** to select hour and press **CLOCK** to confirm.
↳ The minute digits are displayed and begin to blink.
- 5 Press **⏮** / **⏭** to select minute and press **CLOCK** to confirm.
↳ 'SYNC OFF' is displayed.

- 6 Press **⏮** / **⏭** to select 'SYNC ON' or 'SYNC OFF' and press **CLOCK** to confirm.

↳ If you have selected 'SYNC ON', automatic clock synchronization starts when you listen to an RDS station that transmits time signals.



Tip

- You can press **CLOCK** to view clock information when the unit is switched on.

Turn on

- Press **⏻**.
↳ The unit switches to the last selected source.
↳ The signal strength indicators flash for several seconds until the unit boots up.

Switch to standby mode

- Press **⏻** again to switch the unit to standby mode.
↳ The clock (if set) is displayed on the panel.

Switch to ECO mode:

- Press and hold **⏻** for more than 3 seconds.
↳ The display panel is dimmed.
↳ The Bluetooth/ECO indicator lights up red.



Note

- The unit switches to ECO mode after 15 minutes in standby mode.
- In group mode, the unit does not go to ECO mode automatically.

To switch between standby mode and ECO mode:

- Press and hold **⏻** for more than 3 seconds.

4 Play

Play in single mode

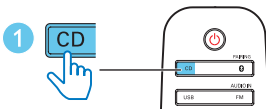
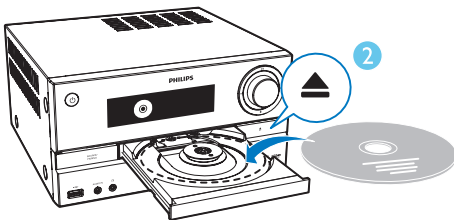
Single mode: Single mode means that the speaker is not grouped with any other izzylink-compatible multiroom speakers. Instead, it is used as a standalone speaker.

Play from disc

Note

- Make sure that the disc contains playable audio content.

- 1 Press **CD** to select the **DISC** source.
- 2 Insert a disc into the disc compartment with the printed side facing up.
↳ Playback starts automatically. If not, press **▶||**.

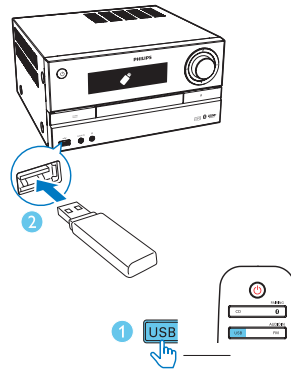


Play from USB

Note

- Make sure that the USB device contains playable audio content (see 'Product information' on page 18).

- 1 Press **USB** to select the **USB** source.
- 2 Insert a USB device into the **USB** socket.
↳ Playback starts automatically. If not, press **▶||**.



Control play

▲ / ▼	Select a folder.
⏮ / ⏭	Press to skip to the previous or next track. Press and hold to search backward/forward within a track.
▶	Pause or resume play.
■	Stop play.
MODE	Play a track or all tracks repeatedly, or play tracks randomly (Not applicable for the programmed tracks).

Skip to a track

For CD:

Press **⏮ / ⏭** to select another track.

For MP3 disc and USB:

- 1 Press **ALBUM/PRESET ▲ / ▼** to select an album or a folder.
- 2 Press **⏮ / ⏭** to select a track or a file.

Program tracks

You can program a maximum of 20 tracks.

- 1 Stop play, and then press **PROGRAM** to activate programming mode.
- 2 For MP3 tracks, press **ALBUM/PRESET ▲ / ▼** to select an album.
- 3 Press **◀◀ / ▶▶** to select a track, and then press **PROGRAM** to confirm.
- 4 Repeat steps 2-3 to program more tracks.
- 5 Press **▶▶** to play the programmed tracks.
 - To erase the program, stop play, and then press **■**.

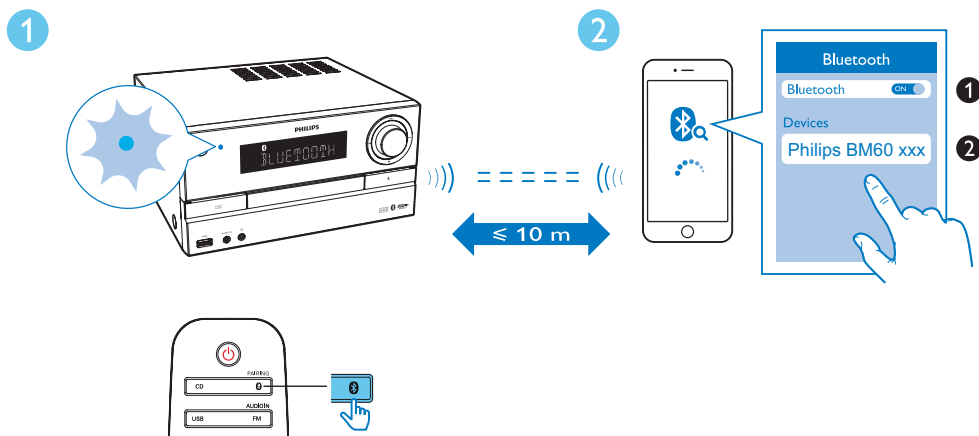
Play from Bluetooth-enabled devices



Note

- Before pairing a device with this unit, read its user manual for Bluetooth compatibility.
- Compatibility with all Bluetooth devices is not guaranteed.
- Any obstacle between the unit and the device can reduce the operational range.
- The effective operational range between this unit and your Bluetooth enabled device is approximately 10 meters (30 feet).
- The unit can memorize up to two previously connected Bluetooth devices.

To enjoy music through the speaker wirelessly, you need to pair your Bluetooth enabled device with the unit.



- 1 Press **BT** /PAIRING to select the **Bluetooth** source.
 ↳ **[BT]** (Bluetooth) is displayed.
 ↳ The Bluetooth indicator flashes blue.
- 2 On your device that supports Advanced Audio Distribution Profile (A2DP), enable Bluetooth and search for Bluetooth devices that can be paired (refer to the user manual of the device).
- 3 Select '**Philips BM60 xxx**' on your Bluetooth enabled device and if necessary input '0000' as the pairing password.
 ↳ After successful pairing and connection, the Bluetooth indicator turns solid blue, and the unit beeps.
 ↳ 'BT' is displayed.
- 4 Play music on the connected device.
 ↳ Music streams from your Bluetooth enabled device to this unit.
 - If you fail to search for '**Philips BM60 xxx**' or cannot pair with this unit, press and hold **BT** /PAIRING for three seconds until you hear a beep sound to enter pairing mode.

To disconnect the current Bluetooth-enabled device:

- Deactivate Bluetooth on your device.

Listen to the radio



Tip

- Position the antenna as far as possible from TV or other radiation sources.
- Make sure that you have connected the supplied FM antenna.
- For optimal reception, fully extend and adjust the position of the antenna.

Tune to a radio station

- 1 Press **FM/AUDIO IN** repeatedly to select the tuner source.
- 2 Press and hold **◀◀** / **▶▶** for three seconds.
 ↳ The radio tunes to a station with strong reception automatically.
- 3 Repeat step 2 to tune to additional stations.

To fine tune a weak station:

- Press **◀◀** / **▶▶** repeatedly until you find optimal reception.

Store FM radio stations automatically

Note

- You can store a maximum of 30 preset radio stations (FM).

- 1 In tuner mode, press **PROGRAM** for more than two seconds to activate automatic programming.
 - ↳ **[AUTO]** is displayed.
 - ↳ The first programmed radio station is broadcast automatically.
- 2 press **ALBUM/PRESET ▲ / ▼** to select a preset station.

Store FM radio stations manually

- 1 Tune to an FM radio station.
- 2 Press **PROGRAM** to activate programming mode.
 - ↳ **[PROG]** (program) blinks.
- 3 Press **ALBUM/PRESET ▲ / ▼** repeatedly to select a preset number.
- 4 Press **PROGRAM** again to confirm.
 - ↳ The frequency of the preset station is displayed.
- 5 Repeat the above steps to store more FM stations.

Note

- To remove a pre-stored station, store another station in its place.

Select a preset radio station

- In FM mode, press **ALBUM/PRESET ▲ / ▼** to select a preset radio station.

Show RDS information

RDS (Radio Data System) is a service that allows FM stations to show additional information.

- 1 Tune to an RDS station.
- 2 Press **DISPLAY/RDS** repeatedly to scroll through the following information (if available):
 - ↳ Program service
 - ↳ Program type such as **[NEWS]** (news), **[SPORT]** (sport), **[POP M]** (pop music)...
 - ↳ Radio text message
 - ↳ Time

Select stereo/mono broadcast

Note

- Stereo broadcast is the default setting for tuner mode.
 - For stations with weak signals: to improve the reception, change to monaural sound.
- In FM tuner mode, press **▶||** to switch between mono and stereo broadcast.
 - ↳ **[STEREO]** (Stereo) is displayed when the radio station is stereo broadcast.

Play in group mode

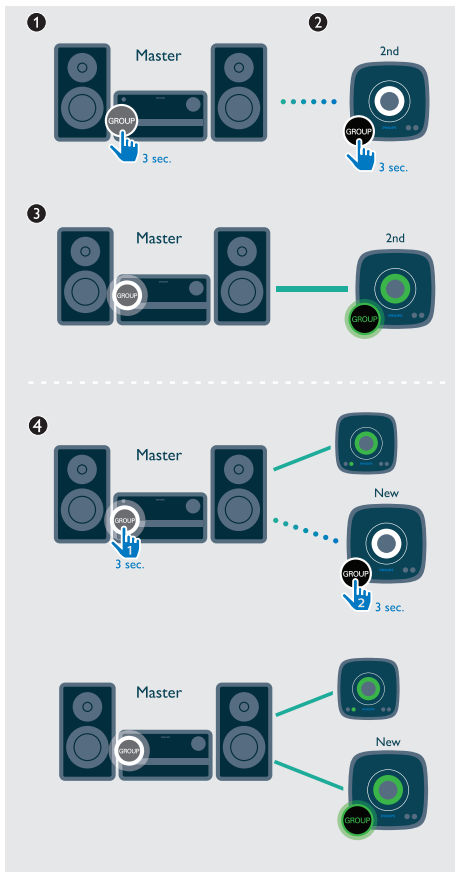
Group mode: If you have more than one izzylink-compatible multiroom speakers, you can create a group and stream music to the group of speakers at the same time.

To use this feature, you need to purchase more than one izzylink-compatible multiroom speakers.

Note

- You can create a group of up to five speakers, with one as the master and four as slaves.
- In the illustrations below, BM5 (as shown on the right of each illustration) is taken as an example for grouping with BM60.

Create a group



Note

- Whenever you create a group, the first speaker that you enable the group function will act as the master.

- 1 Hold **GROUP** on the first speaker for 3 seconds (The master).
- 2 Hold **GROUP** on a second speaker for 3 seconds (The slave).
- 3 Wait for 15 to 30 seconds for connection setup.
- 4 Repeat steps 1 to 3 to add more slave speakers one by one.

Note

- You can only add slave speakers one by one. Each time when you add a slave speaker; first press and hold **GROUP** on the master speaker until the indicator on the button flashes and the speaker beeps.
- If the signal strength indicator on a slave speaker shows that the signal is poor; move it closer to the master speaker.

You can add any of the following speakers into the existing group or create a new group with them:

- A speaker with factory default settings
- A master speaker that has no slave connected to it
- A slave speaker that is disconnected from its master (with the **GROUP** indicator flashing)

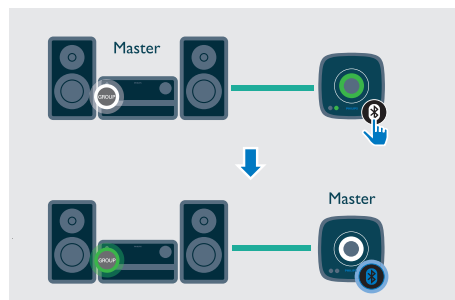
Play from the master to the whole group

Note

- In Bluetooth mode, music play pauses when there is an incoming call or video recording is in progress on the connected mobile phone.
- If this speaker (BM60) acts as the master; select a source and play to the whole group of speakers.

Change master

You can change the current master in a group easily. For example, in Bluetooth mode, when your mobile phone loses connection with the current master speaker; you can set the closest slave speaker as the master:

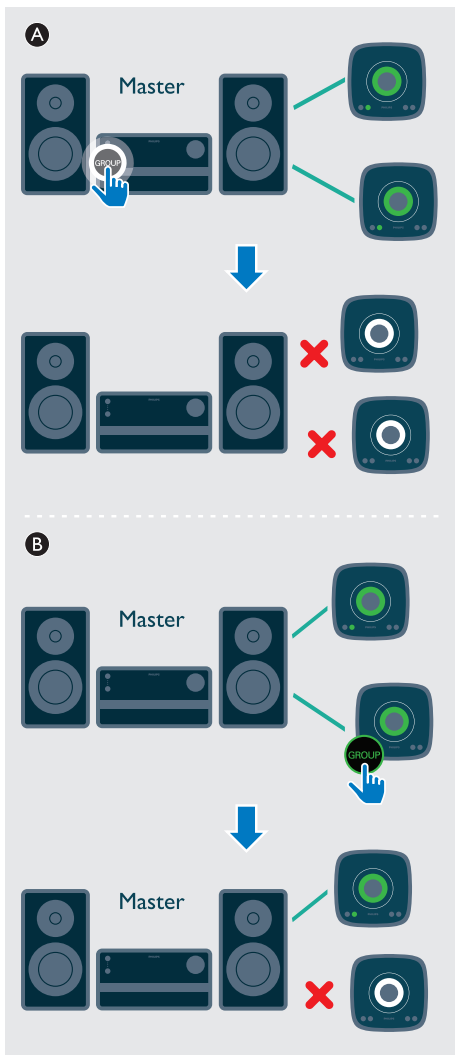


- Press any source key on a slave speaker to change it to be the master of the group.

Note

- Pair your mobile device with the new master if you have not paired with it before.

Switch to single mode



- (A) Press **GROUP** on the master to enter single mode.
 - ↳ The slaves keep looking for the master until timeout in 15 minutes.
 - ↳ You can create a new group with the slaves or press **GROUP** on a slave to enter single mode.
- Press **GROUP** on the master again to resume group mode.
- (B) Press **GROUP** on a slave to switch to single mode. Press **GROUP** again to rejoin.

Reset group status

- In case of any grouping issues, hold **GROUP** for eight seconds to reset..

5 Adjust sound

The following operations are applicable to all supported media.

Select a preset sound effect

- Press **SOUND** repeatedly to select a preset sound effect.
 - **Balance, Clear, Powerful, Warm, and Bright.**

Adjust volume level

- On the remote control, press **+/-** repeatedly.
- On the main unit, rotate the volume knob.

Mute sound

- Press **MUTE** to mute or unmute the sound.

6 Other features

Set the alarm timer

This unit can be used as an alarm clock. You can select **DISC**, **USB**, or **TUNER** as the alarm source.

Note

- Make sure that you have set the clock correctly.

- 1 In standby mode, press and hold **SLEEP/TIMER** for three seconds.
- 2 Press **◀◀** / **▶▶** repeatedly to select an alarm source (**DISC**, **USB**, or **TUNER**)
- 3 Press **SLEEP/TIMER** to confirm.
↳ The hour digits begin to blink.
- 4 Repeat steps 2-3 to set the hour, minute, and adjust volume of the alarm.

Note

- If no button is pressed in 90 seconds, the system exits timer setting mode automatically.

To activate or deactivate the alarm timer:

- Press **SLEEP/TIMER** repeatedly to view the alarm information and activate or deactivate the alarm.
↳ If the timer is activated, **[TIMER]** (Timer) is displayed.
↳ If the timer is deactivated, **[TIMER OFF]** (timer off) is displayed and **[TIMER]**(Timer) disappears.

Tip

- If no **DISC** or **USB** is detected, the system will use **FM** as the default alarm source.

Set the sleep timer

- Press **SLEEP/TIMER** to set the number of minutes before the unit automatically turns off:
 - **[SLP 120]**
 - **[SLP 90]**
 - **[SLP 60]**
 - **[SLP 45]**
 - **[SLP 30]**
 - **[SLP 15]**
 - **[SLP OFF]**

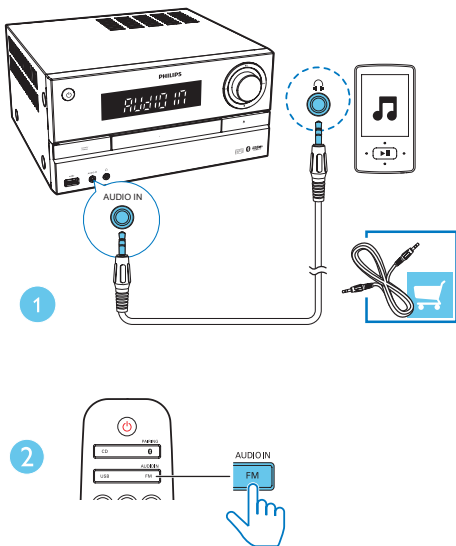
Tip

- Sleep timer can only be set when the unit is 'On'.


Listen from an external device

You can listen to an external device through this unit with a 3.5mm audio cable.

- 1 Press **FM/AUDIO IN** repeatedly to select the **AUDIO IN** source.
- 2 Connect an audio cable (not supplied) between:
 - the **AUDIO IN** socket (3.5 mm) on the unit;
 - and the headphone/**LINE OUT** socket on an external device.
- 3 Start to play music on the connected device (see the device user manual).



Listen through a headphone

- Plug a headphone (not supplied) into the  socket.

Update firmware

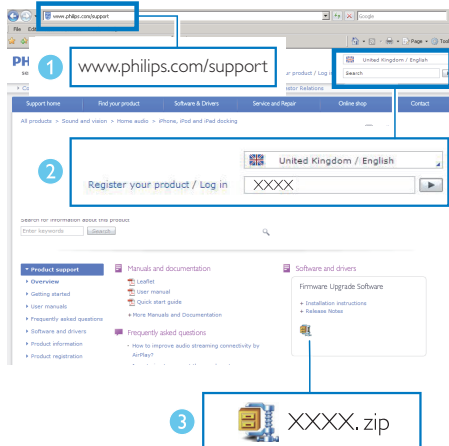
Warning

- Always connect the speaker to AC power for firmware upgrade.
- Never power off the speaker or unplug the USB mass storage device before completion of the firmware upgrade.

Note

- Make sure that the USB stick is FAT16/32 formatted.

- 1 On your PC/Mac, go to www.philips.com/support.
- 2 Enter the model number to find the latest firmware upgrade files available.



- 3 Unzip and save the upgrade files to the root directory of a USB stick.
- 4 Press **USB** to select the **USB** source, then plug the USB stick into the USB socket on the back of the speaker.
- 5 Do not remove the USB stick, and wait for around 3 to 4 minutes for completion of the firmware upgrade.
 - ↳ During firmware upgrade, 'UPGRADE' is shown on the display panel.
 - ↳ At completion of firmware upgrade, 'SUCCESS' is shown on the display panel.
- 6 Disconnect the AC power of the speaker and remove the USB stick.
- 7 Connect AC power again and turn on the speaker.

Tip

- At completion of upgrade, remember to delete the upgrade files from your USB stick.

7 Product information

Note

- Product information is subject to change without prior notice.

Specifications

Amplifier

Total Output Power	Maximum 150W
Frequency Response	40 Hz - 20 kHz; ±3 dB
Signal to Noise Ratio	≥ 75 dBA
Total Harmonic Distortion	< 1%
Aux Input	1 V ± 100 mV RMS 22kohm

Disc

Laser Type	Semiconductor
Disc Diameter	12 cm/8 cm
Support Disc	CD-DA, CD-R, CD-RW, MP3-CD
Audio DAC	24 Bits/44.1 KHz
Total Harmonic Distortion	<3% (1 KHz)
Frequency Response	20 Hz - 20 kHz (44.1 KHz)
S/N Ratio	≥80 dBA

USB

USB Direct Version	2.0 full speed
--------------------	----------------

Speakers

Speaker Impedance	6 ohm
Speaker Driver	2 × 100mm Woofer; 20mm Tweeter
Sensitivity	83 ± 3dB/m/W

Bluetooth

Bluetooth version	V2.1 +EDR
Bluetooth frequency band	2.402GHz ~ 2.48GHz ISM Band
Range	10 m (free space)

Tuner (FM)

Tuning Range	87.5-108 MHz
Tuning grid	50 KHz
Sensitivity	
- Mono, 26dB S/N Ratio	≤22 dBf
- Stereo, 46dB S/N Ratio	≤48 dBf
Search Selectivity	≤32 dBf
Total Harmonic Distortion	<3%
Signal to Noise Ratio	≥45 dB

General information

AC power	110-127 V~/220-240 V~, 50/60 Hz
Power Consumption	Operation mode: 48W ECO mode: < 0.5 W
Dimensions	
- Main Unit (W × H × D)	249 × 128 × 227 mm
- Speaker Box (W × H × D)	140 × 305 × 215 mm
Weight	
- Main Unit	2.3 kg
- Speaker Box	2.6 kg × 2

USB playability information

- Supported file format: MP3 (*.mp3)
- Supported MP3 bit rate: 32k-320kbps CBR and VBR.
- Supported USB file system: FAT12, FAT16, FAT32 (sector size: 512 bytes)

Supported MP3 disc formats

- ISO9660, Joliet
- Maximum title number: 128 (depending on file name length)
- Maximum album number: 99
- Supported sampling frequencies: 32 kHz, 44.1 kHz, 48 kHz
- Supported Bit-rates: 32~256 (kbps), variable bit rates

8 Troubleshooting



Warning

- Never remove the casing of this device.

To keep the warranty valid, never try to repair the system yourself.

If you encounter problems when using this device, check the following points before requesting service. If the problem remains unsolved, go to the Philips Web page (www.philips.com/support). When you contact Philips, make sure that the device is nearby and the model number and serial number are available.

No power

- Make sure that the AC power cord of the device is connected properly.
- Make sure that there is power at the AC outlet.
- As a power-saving feature, the system switches off automatically 15 minutes after track play reaches the end and no control is operated.

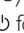
No sound or poor sound

- Adjust the volume.
- Check that the speakers are connected correctly.
- Check if the stripped speaker wires are clamped.

No response from the unit

- Disconnect and reconnect the AC power plug, then turn on the unit again.
- As a power-saving feature, the system switches off automatically 15 minutes after track play reaches the end and no control is operated.

Some buttons on the unit do not work or the unit is not working as usual.

- You may have activated demo mode by accident. In this case, press and hold  for 15 seconds until all indicators flash to exit demo mode. If the issues remains, repeat the operation. Then you can power on and operate the speaker as usual.

Remote control does not work

- Before you press any function button, first select the correct source with the remote control instead of the main unit.
- Reduce the distance between the remote control and the unit.
- Insert the battery with its polarities (+/- signs) aligned as indicated.
- Replace the battery.
- Aim the remote control directly at the sensor on the front of the unit.

No disc detected

- Insert a disc.
- Check if the disc is inserted upside down.
- Wait until the moisture condensation at the lens has cleared.
- Replace or clean the disc.
- Use a finalized CD or correct format disc.

Cannot display some files in USB device

- The number of folders or files in the USB device has exceeded a certain limit. This phenomenon is not a malfunction.
- The formats of these files are not supported.

USB device not supported

- The USB device is incompatible with the unit. Try another one.

Poor radio reception

- Increase the distance between the unit and your TV or other radiation sources.
- Fully extend the FM antenna.

Music playback is unavailable on this unit even after successful Bluetooth connection.

- The device cannot be used to play music through this unit wirelessly.

The audio quality is poor after connection with a Bluetooth-enabled device.

- The Bluetooth reception is poor. Move the device closer to this unit or remove any obstacle between them.

Bluetooth cannot be connected with this unit.

- The device does not support the profiles required for this unit.
- The Bluetooth function of the device is not enabled. Refer to the user manual of the device to find out how to enable the function.

- This unit is not in pairing mode.
- This unit is already connected with another Bluetooth-enabled device. Disconnect that device and then try again.

The paired mobile device connects and disconnects constantly.

- The Bluetooth reception is poor. Move the device closer to this unit or remove any obstacle between them.
- Some mobile phones may connect and disconnect constantly when you make or end calls. This does not indicate any malfunction of this unit.
- For some devices, the Bluetooth connection may be deactivated automatically as a power-saving feature. This does not indicate any malfunction of this unit.

Timer does not work

- Set the clock correctly.
- Switch on the timer.

Clock/timer setting erased

- Power has been interrupted or the power cord has been disconnected.

Occasional stuttering or breaking of music streaming during group playback

If you experience music stuttering or breaking of streaming, it could be that your home Wi-Fi network is busy. Even though izzylink is independent from your home Wi-Fi network, it uses Wi-Fi signals to communicate between the speakers. Try the following : 1) Reduce traffic on your home Wi-Fi network, e.g. stop any large file downloads or other content streaming on your Wi-Fi network; 2) Reboot the Master speaker, by unplugging it from the mains and plugging it in again.

9 Notice

Any changes or modifications made to this device that are not expressly approved by Gibson Innovations may void the user's authority to operate the equipment.

CE 0890

Declaration of conformity

Hereby, Gibson Innovations declares that this product is in compliance with the essential requirements and other relevant provisions of Directive 1999/5/EC. You can find the Declaration of Conformity on www.philips.com/support.

Disposal of your old product and battery



Your product is designed and manufactured with high quality materials and components, which can be recycled and reused.



This symbol on a product means that the product is covered by European Directive 2012/19/EU.



This symbol means that the product contains batteries covered by European Directive 2013/56/EU which cannot be disposed of with normal household waste. Inform yourself about the local separate collection system for electrical and electronic products and batteries. Follow local rules and

never dispose of the product and batteries with normal household waste. Correct disposal of old products and batteries helps prevent negative consequences for the environment and human health.

Removing the disposable batteries

To remove the disposable batteries, see battery installation section.

Environmental information

All unnecessary packaging has been omitted.

We have tried to make the packaging easy to separate into three materials: cardboard (box), polystyrene foam (buffer) and polyethylene (bags, protective foam sheet.)

Your system consists of materials which can be recycled and reused if disassembled by a specialized company. Please observe the local regulations regarding the disposal of packaging materials, exhausted batteries and old equipment.



**Be responsible
Respect copyrights**

This item incorporates copy protection technology that is protected by U.S. patents and other intellectual property rights of Rovi Corporation. Reverse engineering and disassembly are prohibited.

Bluetooth

The Bluetooth® word mark and logos are registered trademarks owned by Bluetooth SIG, Inc. and any use of such marks by Gibson Innovations Limited is under license. Other trademarks and trade names are those of their respective owners.

This apparatus includes this label:





Note

- The type plate is located on the back of the device.

Written offer

Gibson Innovations Limited hereby offers to deliver; upon request, a copy of the corresponding source code for the open source software packages used in this product for which such offer is requested by the respective licenses. This offer is valid up to three years after product purchase. To obtain source code, please contact open.source-gi@gibson.com. If you prefer not to use email or if you do not receive confirmation receipt within a week after mailing to this email address, please write to Open Source Team, Gibson Innovations Limited, 5/F Philips Electronics Building, 5 Science Park East Avenue, Hong Kong Science Park, Shatin, N.T. Hong Kong.

