

---

## Data sheet

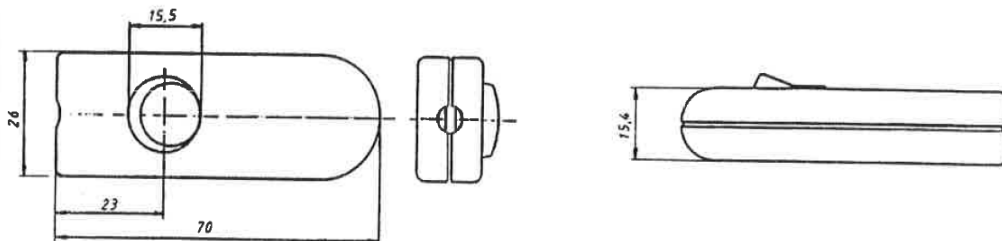
---

### Article Description

#### Line intermediate switch Type 8093

2 (0,7) A, 250 V, **2-pole**, on/off-switch  
for double insulated flat cable 2 x 0,75 mm<sup>2</sup>,  
positive strain relief, marking 0-I,  
screwed housing  
with screw terminals,

### Article Picture



<i>inter BÄR-No.</i>	<i>Colour housing</i>	<i>rocker</i>
8093-208...	white	white
8093-204...	black	black

**Technical modifications reserved!**  
**Works at 230 V-mains must only be carried out by a specialist!**