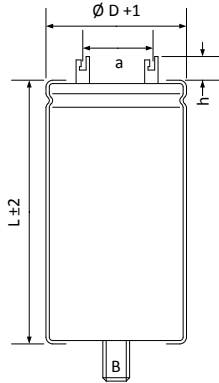


**Typ : LFB10302530050**

RoHS Compliant



Ø D : 30 mm  
 L : 50 mm  
 a : 10 mm  
 h : 10 mm

Terminals : LF

Electrical Parameters

Rated Capacitance ( C <sub>R</sub> ) @ 100 Hz / 20 °C	<b>10000</b> µF	
Tolerance	<b>-10/ +30</b> %	
Rated Voltage ( U <sub>R</sub> )	<b>25</b> V	
Surge Voltage ( U <sub>S</sub> ) max. 5 x 1 min / h	<b>29</b> V	
Reverse Voltage ( U <sub>U</sub> ) max. 1 s	<b>2</b> V	
Leakage Current ( I <sub>L</sub> ) @ U <sub>R</sub> / 5 min / 20 °C	<b>1500</b> µA	
ESR typ. @ 100 Hz / 20°C	<b>43</b> mΩ	
Tan δ typ. @ 100 Hz / 20°C	<b>27</b> %	
Z max. @ 10 kHz / 20°C	<b>34</b> mΩ	
ESL typ.	<b>20</b> nH	
Rated Ripple Current ( I <sub>R</sub> ) @ 100 Hz / 85 °C	<b>3,2</b> A	
Useful life @ I <sub>R</sub> , U <sub>R</sub> , 85 °C	<b>5000</b> h	
IEC Climatic category / Standards	<b>40/085/56</b>	<b>IEC 60384-4</b>
Applications		