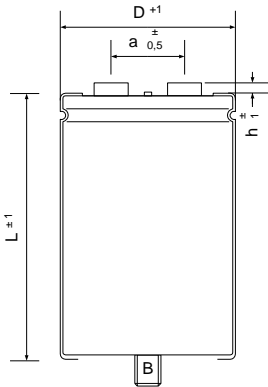


Drawing No. : 1012356
 created: SBR 23/11/2016 17:42:00

Page 1 / 1

Typ : GHB47204035070

RoHS Compliant



\varnothing D : 35 mm
 L : 70 mm
 a : 13 mm
 h : 6 mm
 B : M8 x 12
 Terminals : M5

Max. torque:
 Terminals: M5: 2,0 Nm, M6: 2,5 Nm
 Stud: M8: 4,0 Nm, M12: 10,0 Nm

Electrical Parameters

Rated Capacitance (C_R) @ 100 Hz / 20 °C	4700 μ F	
Tolerance	-10/ +30 %	
Rated Voltage (U_R)	40 V	
Surge Voltage (U_S) max. 5 x 1 min / h	46 V	
Reverse Voltage (U_U) max. 1 s	2 V	
Leakage Current (I_L) @ U_R / 5 min / 20 °C	1128 μ A	
ESR typ. @ 100 Hz / 20°C	51 m Ω	
Tan δ typ. @ 100 Hz / 20°C	15 %	
Z max. @ 10 kHz / 20°C	41 m Ω	
ESL typ.	20 nH	
Rated Ripple Current (I_R) @ 100 Hz / 105 °C	3,7 A	
Useful life @ I_R , U_R , 105 °C	8000 h	
IEC Climatic category / Standards	40/105/56	IEC 60384-4
Applications		