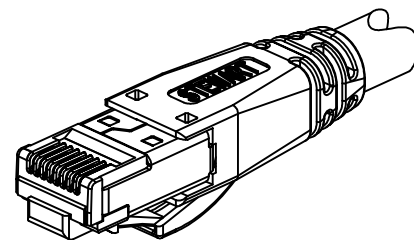
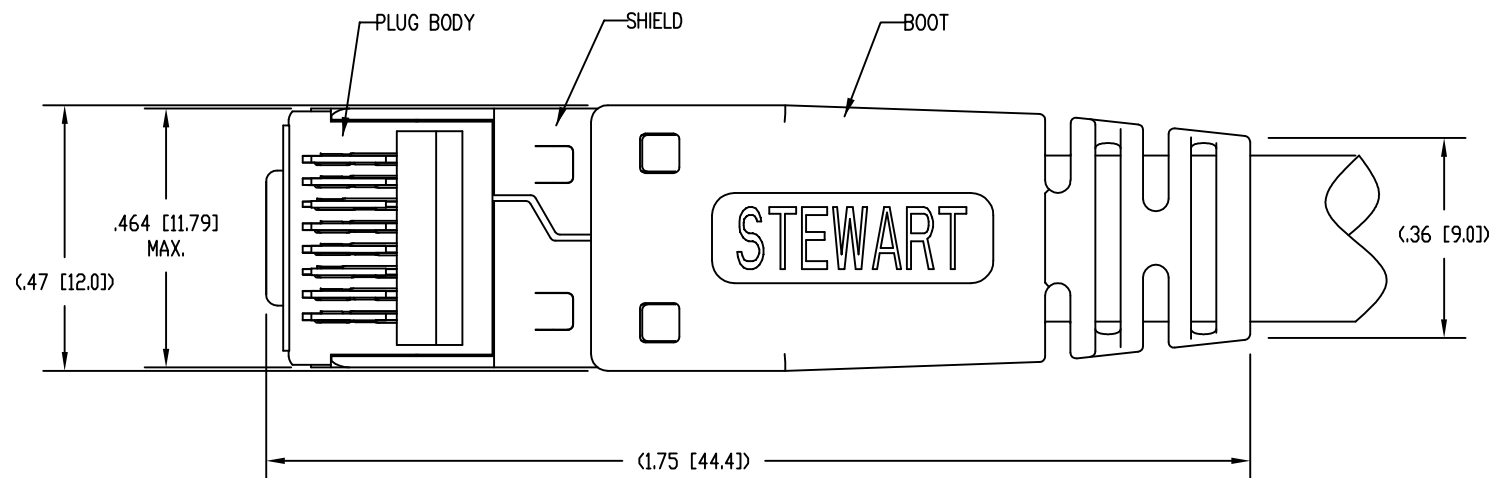


DATE	REV	ECN	APP'D. BY
1-12-15	B1	10179	TRM
10-6-15	B2	10435	TRM



ISOMETRIC VIEW OF TERMINATED PLUG

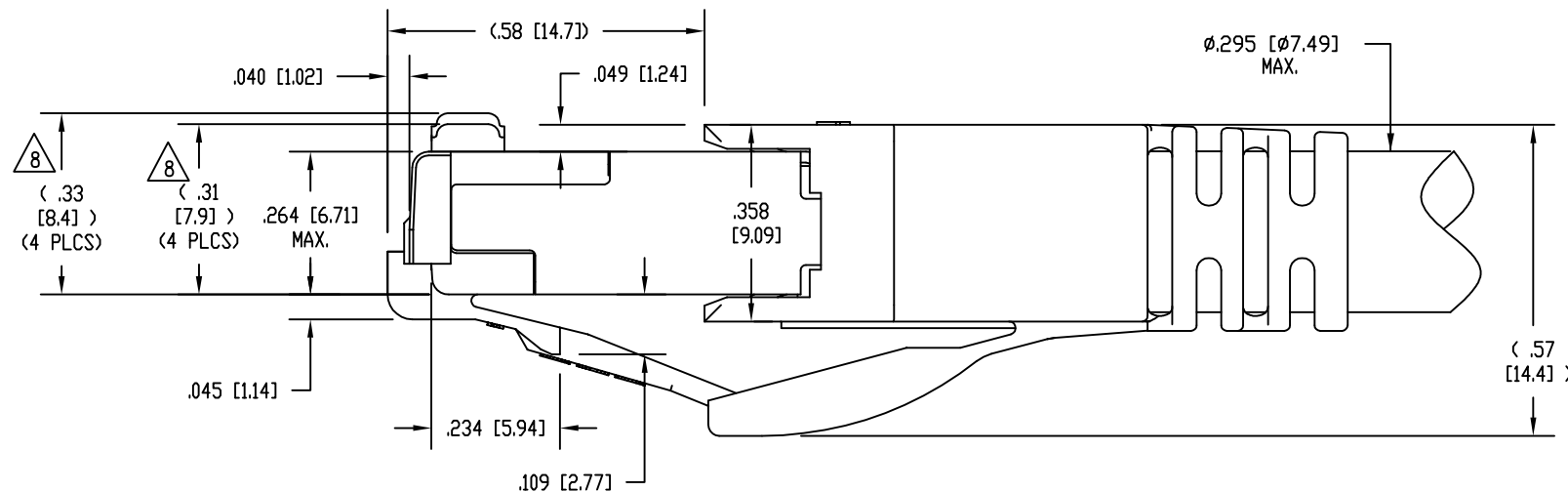
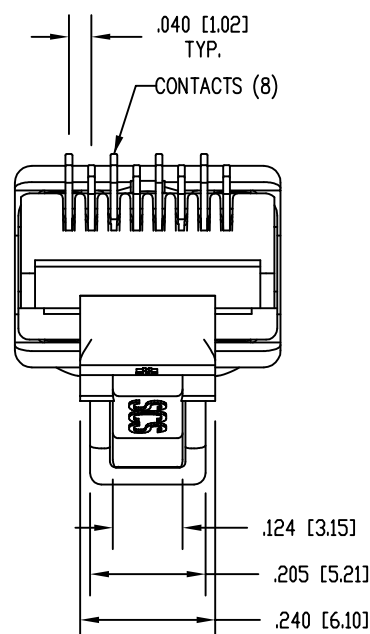


NOTES:

- PLUG KIT CONSISTS OF:
PRE-INSERTED PLUG BODY WITH SHIELD - 39200-321
LOAD BAR - 39200-899
BOOT - 39200-883
WIRE ALIGNER - 39100-864
- MATERIALS:
PLUG BODY: CLEAR POLYCARBONATE, UL 94-V0
BOOT : BLACK POLYCARBONATE, UL 94-V0
WIRE ALIGNER AND LOAD BAR: CLEAR POLYCARBONATE, UL 94-V0
CONTACTS: COPPER ALLOY, SELECTIVE GOLD PLATING
SHIELD: COPPER ALLOY, NICKEL PLATE
- FOR PRODUCT SPECIFICATION SEE PR026-01.
- CONTACTS TERMINATE SOLID OR STRANDED CONDUCTORS BETWEEN .042 [1.07] TO .048 [1.22] OUTSIDE DIAMETER OF INSULATION.
- CRIMP IS FOR CABLES WITH OUTSIDE NOMINAL DIAMETERS OF .270 [6.86] TO .295 [7.49].
- INDIVIDUALLY BAGGED PLUG KITS (1 EACH PLUG BODY, LOAD BAR, WIRE ALIGNER, AND BOOT) PACKAGED 25 PER BOX.
- DIMENSIONS AND TOLERANCES COMPLY WITH TIA-1096 STANDARD FORMERLY FCC/CFR 47, PART 68.
- CONTACT HEIGHT BEFORE TERMINATION. AFTER TERMINATION, THE CONTACT HEIGHT IS .237 [6.02] ±.005 [0.13].
- PRODUCT DESIGNED FOR CATEGORY 6 AND 6A APPLICATIONS.

B

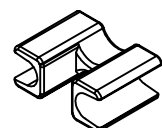
B



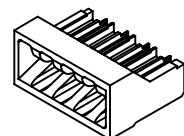
BULK	50 MICRO-INCHES [1.27um]	SS-39200-030
BAGGED $\triangle 6$	50 MICRO-INCHES [1.27um]	SS-39200-027
PACKAGING	CONTACT PLATING IN MATING AREA	PART NUMBER

A

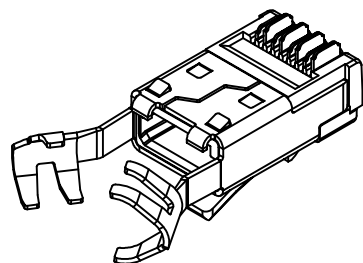
A



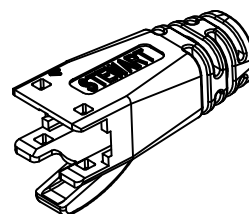
WIRE ALIGNER
39100-864



LOAD BAR
39200-899



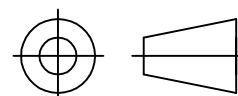
PRE-INSERTED PLUG
BODY WITH SHIELD
39200-321



BOOT
39200-883



THIRD ANGLE PROJECTION



1118 Susquehanna Trail South
Glen Rock, PA 17327-9199
(717) 235-7512

<http://www.stewartconnector.com>

DO NOT SCALE DRAWING
DRAWING IS SUBJECT TO
CHANGE WITHOUT NOTICE

TITLE: 8 CONDUCTOR, 8 POSITION SHIELDED PLUG, WITH BOOT,
LOAD BAR, AND WIRE ALIGNER, .048 MAX DIA WIRE

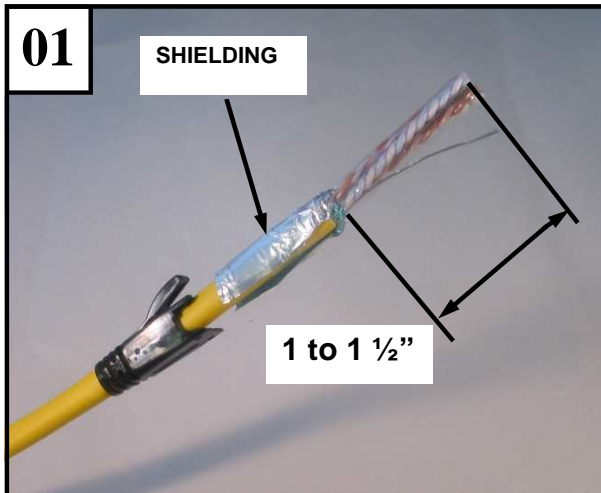
DIMENSIONS: INCHES [METRIC]
UNLESS OTHERWISE SPECIFIED
TOLERANCES ARE ±.005 [0.13]
ANGLES ARE ± 1°

THIS DRAWING AND THE SUBJECT MATTER SHOWN THEREON ARE
CONFIDENTIAL AND THE PROPRIETARY PROPERTY OF STEWART CONNECTOR
AND SHALL NOT BE REPRODUCED, COPIED, OR USED IN ANY MANNER WITHOUT
PRIOR WRITTEN CONSENT OF STEWART CONNECTOR. THIS PRODUCT
MAY BE PROTECTED BY ONE OR MORE OF THE FOLLOWING US PATENTS:
5628647 6402559 6409535 6524128
7753717 8033863
OTHER PATENTS MAY BE PENDING.

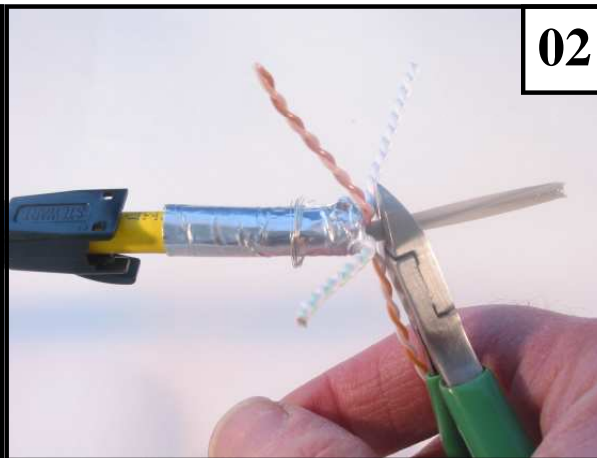
DRN BY:	DHG	DATE	8-22-12
APPD BY:	SAW	DATE	2-13-13
DWG NO.	CT390094	REV.	B2

SHEET NO. 1 OF 1

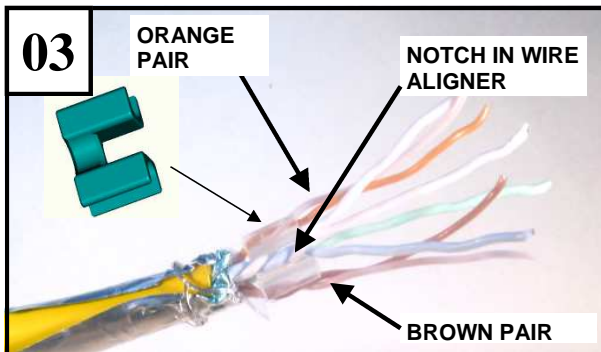
39200 Shielded Large Conductor Plug Assembly Instructions



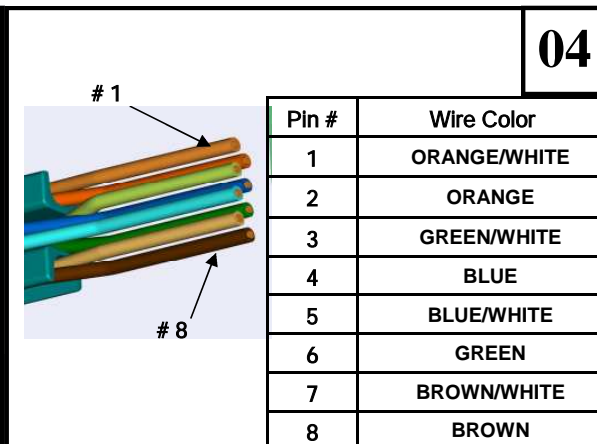
- Cut cable to length. Insert cable into the boot if used.
- Strip the jacket back 1 to 1 1/2 inches.
- If using shielded cable, fold braid, drain wire, or foil back over the jacket.



- Spread the wire pairs apart.
- Carefully cut away any spline or filler strips from the end of the cable. Cut as close to the edge of the jacket as you can without nicking the wire insulation.

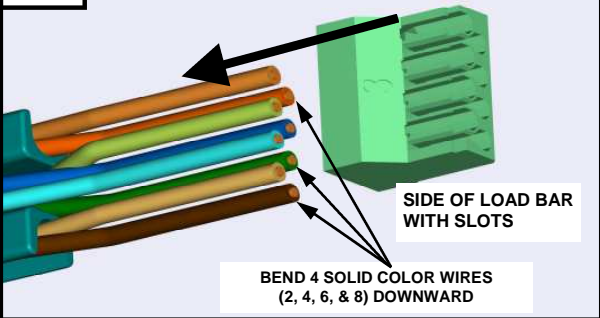
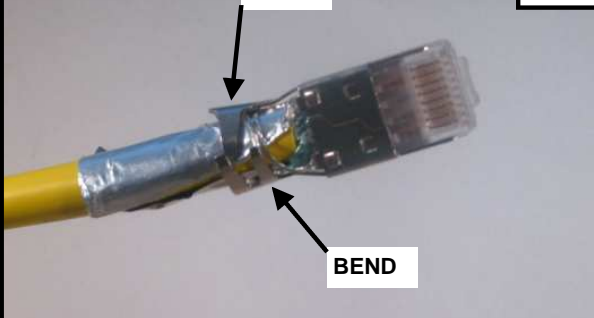


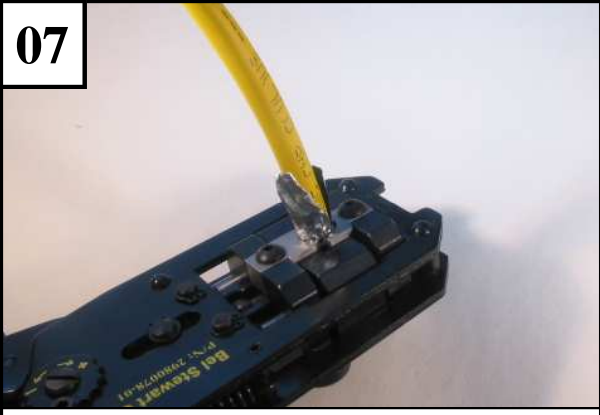
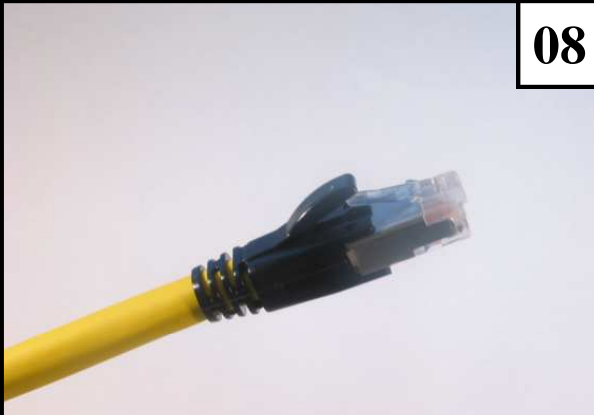
- Orient the **Orange** pair up and the **Brown** pair down.
- Insert the wire aligner so the notch is facing right. The **Blue** and **Green** pairs should straddle the wire aligner in the shallow channels. (Either the Blue or Green pair may be in front depending on which the end of the cable is used.)
- Keep the aligner tight against the jacket.
- Untwist the wire pairs. Stop untwisting at the edge of the wire aligner.



- Smooth out the wires as straight as possible.
- Align wires to standard (T568B Shown above).
- Trim off a little of each wires so the ends are all even. Leave at least 3/4 of an inch sticking out of the wire aligner.

39200 Shielded Large Conductor Plug Assembly Instructions

<p>05</p> <p>PUSH LOAD BAR OVER WIRES</p>  <p>SIDE OF LOAD BAR WITH SLOTS</p> <p>BEND 4 SOLID COLOR WIRES (2, 4, 6, & 8) DOWNWARD</p> <ul style="list-style-type: none">• Bend the solid color wires down slightly.• Insert the ends of the wires into the load bar keeping the slots toward you (see picture).• Pull the wires through the load bar and seat the load tight against the wire aligner.• Trim off the wires flush to the end of the load bar	<p>06</p>  <p>BEND</p> <p>BEND</p> <ul style="list-style-type: none">• Insert the load bar and wires into the back of the plug housing keeping the plug contacts toward you.• Push the loadbar in until it is fully seated against the front of the plug housing.• Ensure that the wires have not backed out of the load bar.• Bend shield fingers in toward the cable.
---	---

<p>07</p>  <ul style="list-style-type: none">• If using shielded cable, the shield fingers should contact the foil, drain wire and/or braid.• Fully insert the plug into the termination tool and close the handle.	<p>08</p>  <ul style="list-style-type: none">• Remove the terminated plug from the tool using the release button.• Trim off any excess shield if used and snap the boot in place.• Inspect and test your cable.
--	---