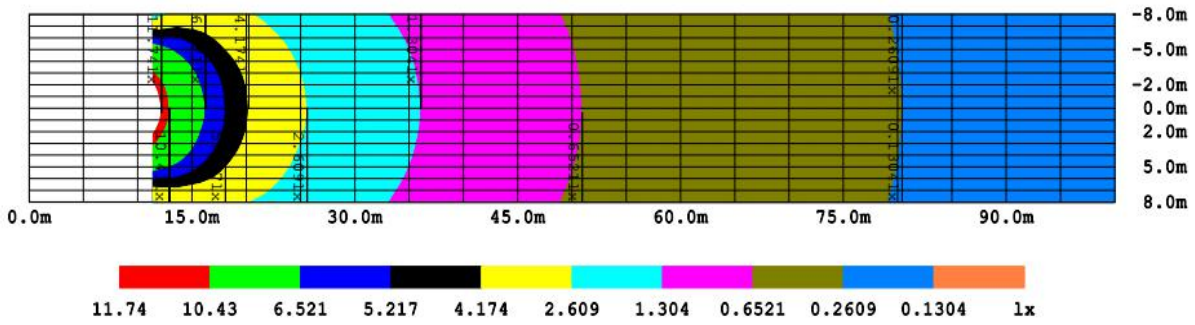
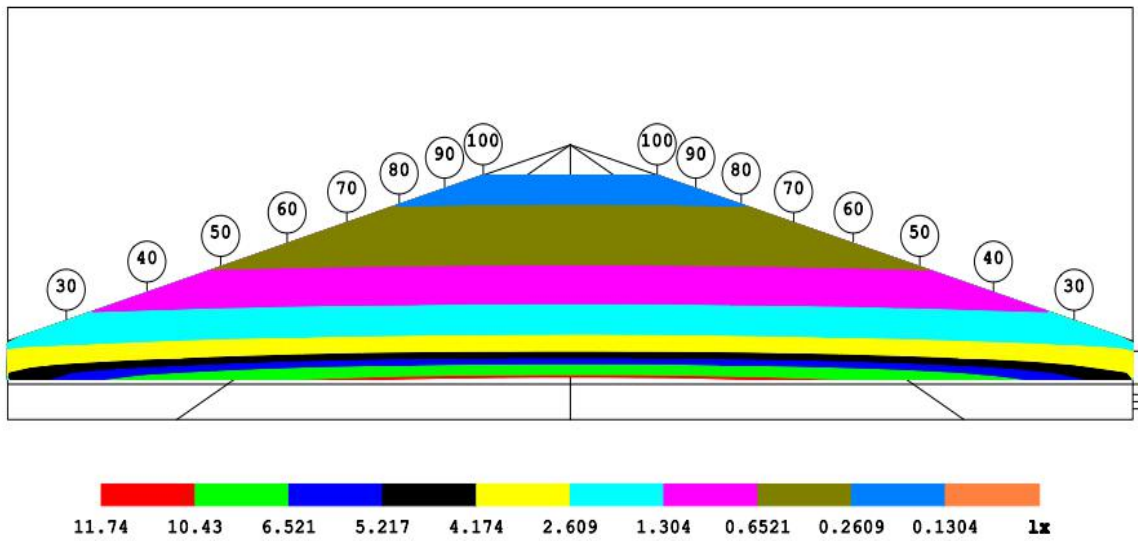


Equiluminous Test Illumination on road_1



Light installation height: $H=1.000\text{m}$, Road illumination area: $L=100.0\text{m}$, $W=16.0\text{m}$
 Electrical parameters:
 Voltage: 23.997V Current: 1.71A Power: 41.03W Power factor: 1.000

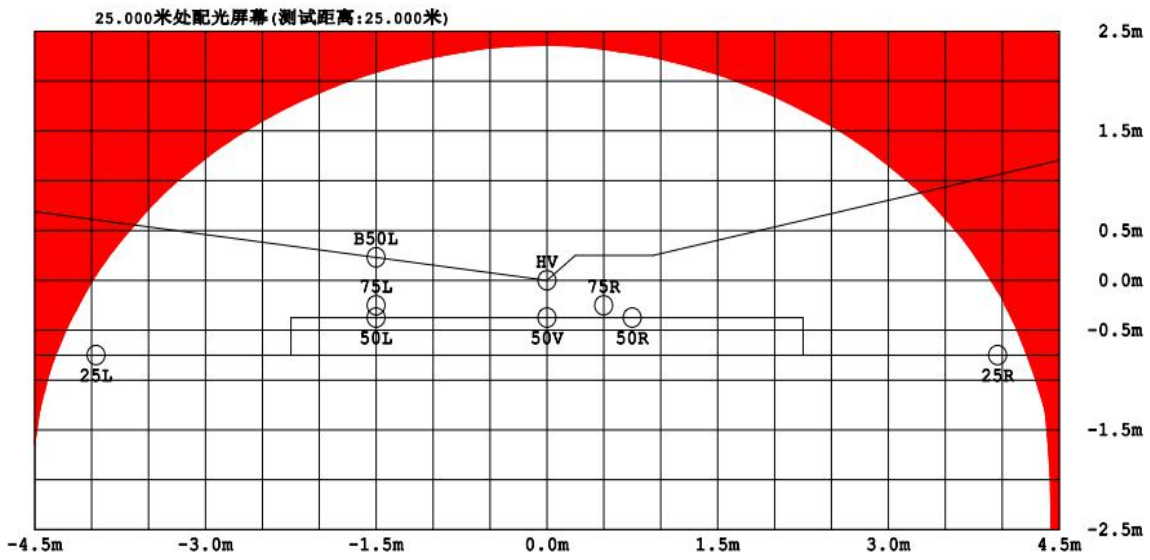
Inlumination on road_2



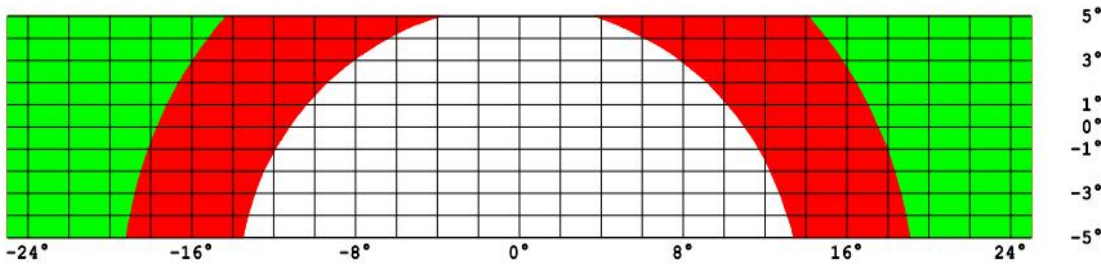
Light installation height: $H=1.000\text{m}$, Road illumination area: $L=100.0\text{m}$, $W=16.0\text{m}$
 Electrical parameters:
 Voltage: 23.997V Current: 1.71A Power: 41.03W Power factor: 1.000

Illumination curve

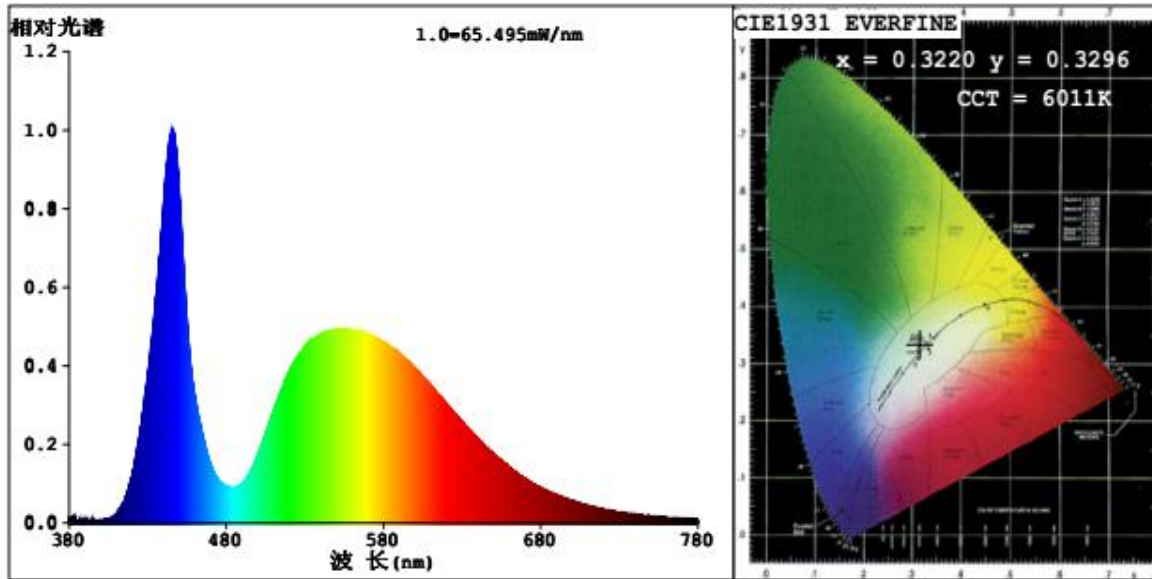
Test distance:25.000m



Light intensity



Light Spectrum Test Report



Color Parameters:

Color coordinates: $x=0.3220$ $y=0.3296$ / $u'=0.2041$ $v'=0.4700$

Related color temperature: $CCT=6011K$ (color deviation $Duv=0.0011$)

Main wavelength $\lambda_d = 487.4nm$ Color purity: Purity=4.1%

Color ratio: R=13.1% G=83.6% B=3.3% Peak wavel $\lambda_p=445.8nm$ FWHM=21.7nm

Color rendering index:

R1=72 R2=74 R3=73 R4=74 R5=73 R6=65 R7=78

R8=64 R9=0 R10=36 R11=73 R12=44 R13=71 R14=85 R15=69

Luminosity parameter:

Luminous flux: $\phi=2179$ lm Light effect: 53.11 lm/w Radiation flux: $\phi_e=6.812w$

Electrical parameters:

Voltage: $V=23.997V$ Current: $I=1.710A$ Power: $P=41.03W$ Power factor: $PF=1.000$

Graded: OUT White beam classification: ANST_5700K

Time: $T=250$ ms $I_p=39956(56\%)$